

## Wadley Coleman - Tract 2

Published on Plantation Properties & Land Investments, LLC (<https://landandrivers.com>)

---



## Wadley Coleman - Tract 2

This 45+/- acre tract is located in Northern Emanuel County, right down from Coleman Lake. This property has highway road frontage and is well suited for anyone who enjoys hunting. Loaded with wildlife this tract is perfect for the investor or sportsman who is looking to invest. Conveniently located about 4 miles from the town of Midville and approximately 1 hour south of Augusta, GA. Call Jason today for more details or see this property. 912.764.LAND(5263)



**Price:** \$58,500

**Property Type:** Land

**Status:** Sold

**Street/Address:** stevens crossing road

**City:** midville

**State:** Georgia

**Zip code:** 30441

**County:** emanuel

**Acreage:** 45

**Per Acre Price:** \$1,300.00

**Phone Number:**

**Email:**

**Google Maps link:** [View Larger Map](#)

## Wadley Coleman - Tract 2

Published on Plantation Properties & Land Investments, LLC (<https://landandrivers.com>)

---



## Topo

## Wadley Coleman - Tract 2

Published on Plantation Properties & Land Investments, LLC (<https://landandrivers.com>)



### PLANTATION PROPERTIES & LAND INVESTMENTS, LLC

1207 Merchants Way, Suite 101 | Statesboro, GA 30588  
912.764.1410 (toll free) | 912.720.5000

John Williams

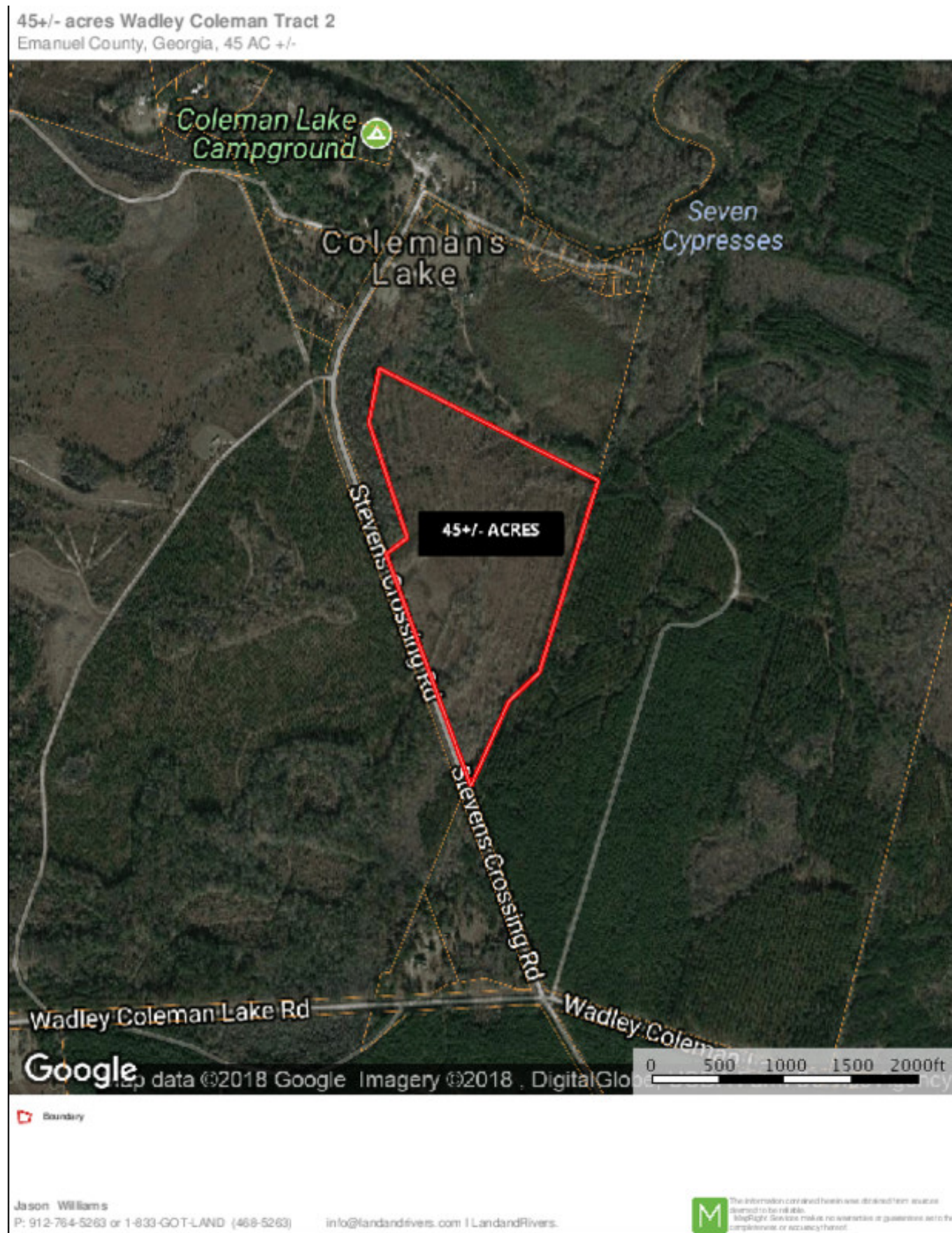
This document is not to be distributed or reused.  
[www.Landandrivers.com](https://landandrivers.com)  
© 2012





## Wadley Coleman - Tract 2

Published on Plantation Properties & Land Investments, LLC (<https://landandrivers.com>)



Source URL: <https://landandrivers.com/property/wadley-coleman-tract-2>