



Tobesofkee Oaks

Tobesofkee Oaks is 251+/- acres located on the outskirts of Macon. This tract boasts ample frontage along Tobesofkee Creek as well as containing a smaller creek. The timber stand on the property is substantial. The upland areas are well stocked with natural pine, while the creek bottoms are filled with several species of mature hardwood. These timber stands represent a valuable and growing asset. A beaver pond along the smaller creek provides great habitat for water fowl. The mast bearing trees along the creek corridors insure plenty of food for the variety of wild game that call the property home. Its proximity to Macon makes this property ideal as a retreat for anyone enjoys the outdoors without being far from home and work. However, its proximity to town does not hinder the solitude or seclusion while on the property.



Price: \$439,775

Property Type: Land

Status: Sold

Street/Address:

City: Macon

State: Georgia

Zip code: 31206

County: bibb

Acreage: 251

Per Acre Price: \$1,750.00

Phone Number: (478) 279-2148

Email: michael@landanddrivers.com

Google Maps link: [View Larger Map](#)

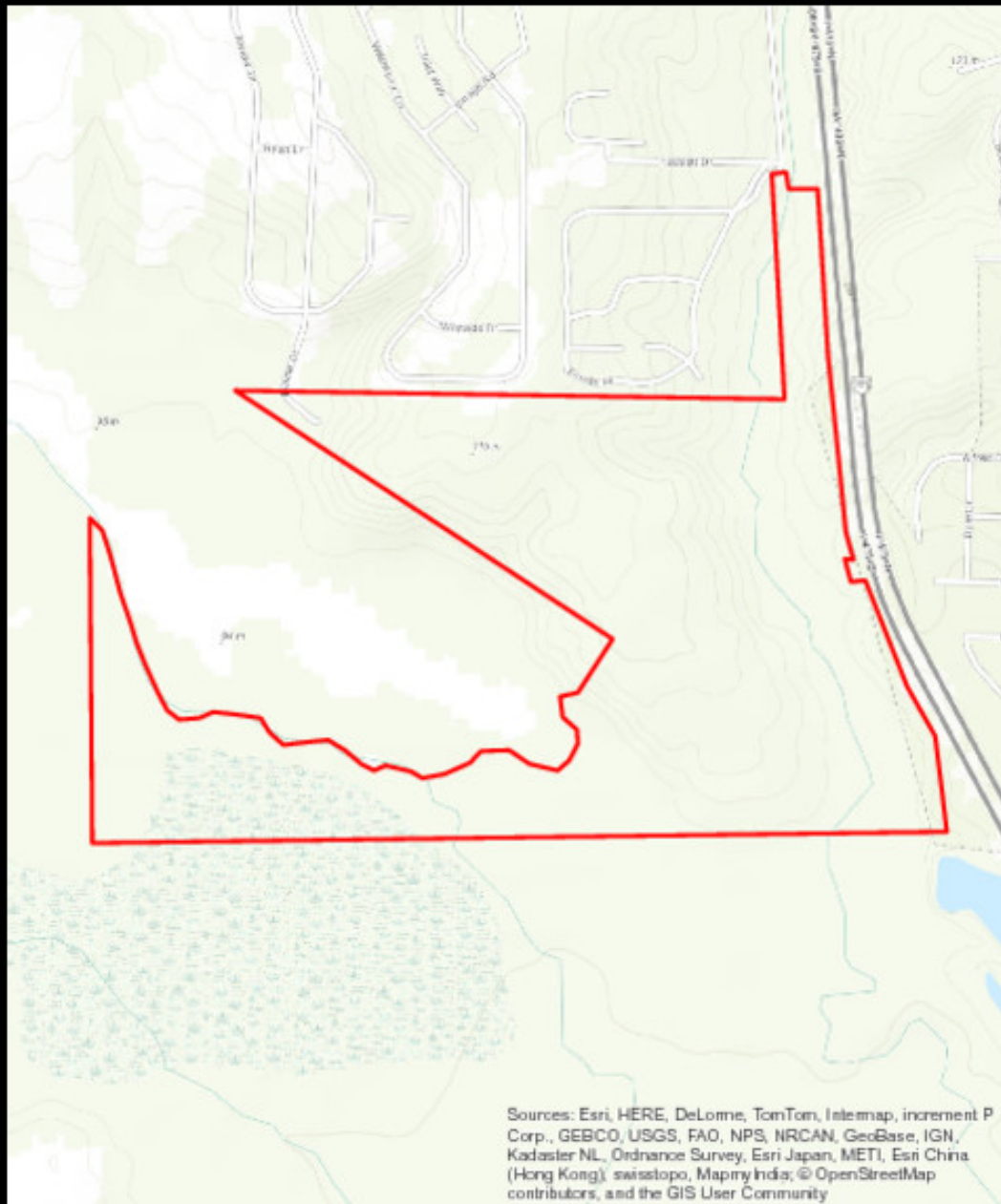
Tobesofkee Oaks

Published on Plantation Properties & Land Investments, LLC (<https://landandrivers.com>)



Published on Plantation Properties & Land Investments, LLC (<https://landandrivers.com>)

Page 3 of 5



Sources: Esri, HERE, DeLorme, TomTom, Intermap, increment P Corp., GEBCO, USGS, FAO, NPS, NRCAN, GeoBase, IGN, Kadaster NL, Ordnance Survey, Esri Japan, METI, Esri China (Hong Kong), swisstopo, Mapmy India, © OpenStreetMap contributors, and the GIS User Community

**PLANTATION PROPERTIES
&
LAND INVESTMENTS, LLC**

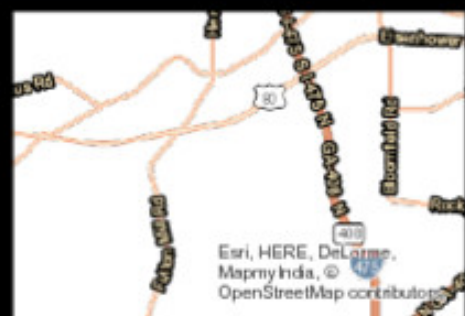
12117 Moss Landing Way, Suite 101 | Statesboro, GA 30458
912.764.5162 | 478.279.2148

Michael Wilkins

This document is not to be distributed or duplicated

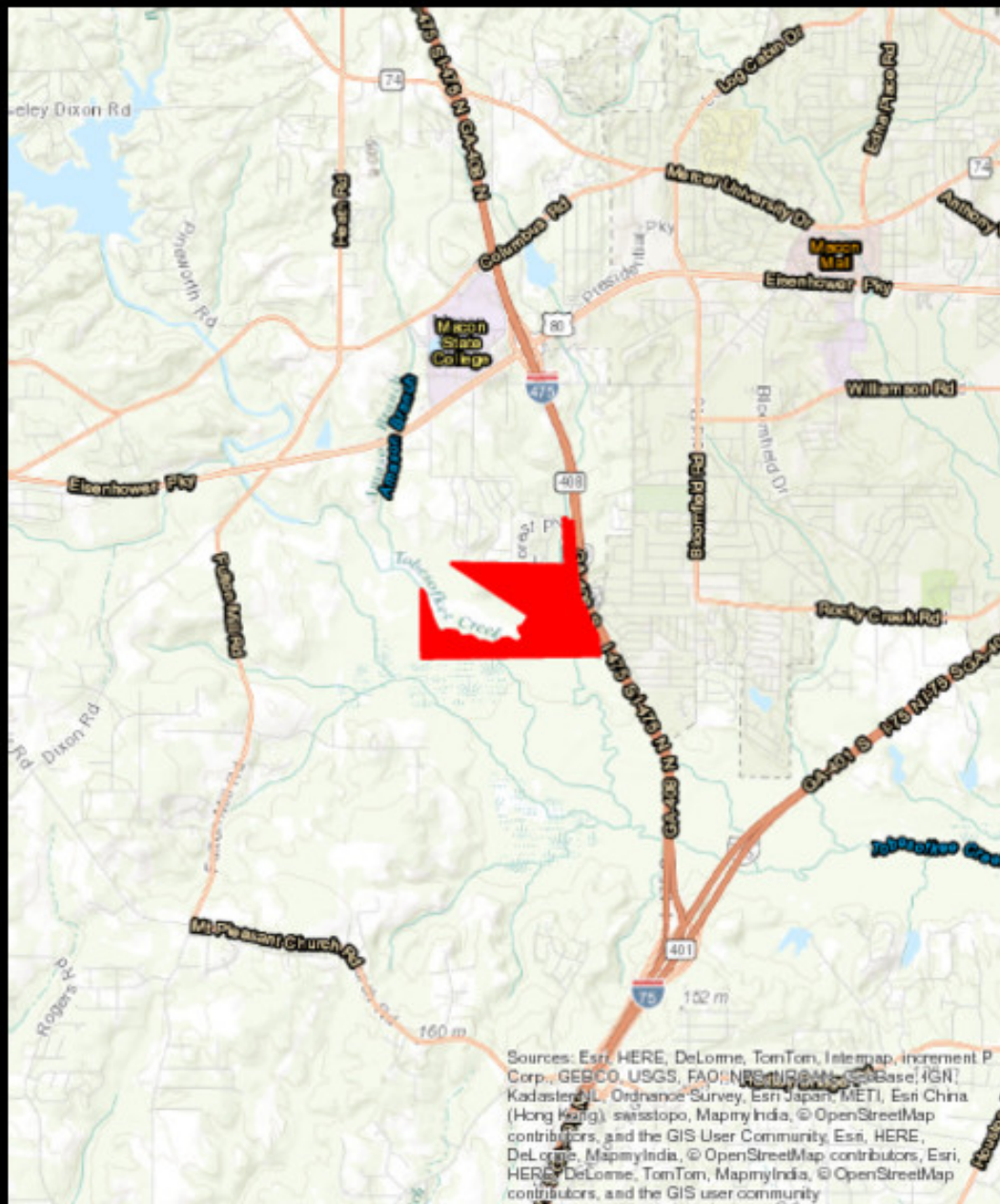
www.LandAndRivers.com

© 2013



Tobesofkee Oaks

Published on Plantation Properties & Land Investments, LLC (<https://landanddrivers.com>)



PLANTATION PROPERTIES & LAND INVESTMENTS, LLC

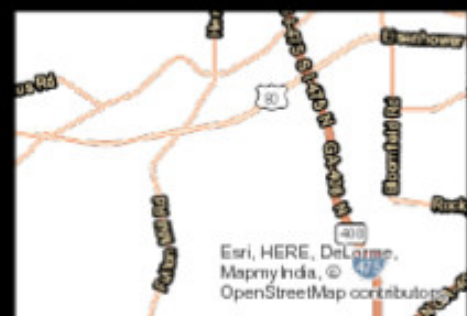
12117 Moss Landing Way, Suite 101 | Statesboro, GA 30458
912.764.5162 | 478.279.2118

Michael Wilkins

This document is not to be distributed or duplicated

www.LandandDrivers.com

© 2013



Source URL: <https://landanddrivers.com/property/tobesofkee-oaks>