

Hwy 25- 45+/-acs

Published on Plantation Properties & Land Investments, LLC (<https://landanddrivers.com>)



Hwy 25- 45+/-acs

45±acs of wooded acreage located along Hwy 25 and Hermans Rd in Millen, GA. With paved road frontage, this property would make for the perfect home site to build your dream home, weekend retreat, or venture property. The possibilities are endless! Enjoy four wheeler riding, camping, and much more all on your own land! Call today for more information or to set up an appointment to view this tract on Hwy 25 with one of our agents. 912.764.5263. Additional acreage can be purchased.



Price: \$90,000

Property Type: Land

Status: Sold

Street/Address: Hwy 25 North

City: millen

State: Georgia

Zip code: 30442

County: jenkins

Acreage: 45

Per Acre Price: \$2,000.00

Phone Number: 912.764.LAND(5263)

Email: info@landanddrivers.com

Google Maps link: [View Larger Map](#)

Hwy 25- 45+/-acs

Published on Plantation Properties & Land Investments, LLC (<https://landandrivers.com>)



Hwy 25- 45+/-acs

Published on Plantation Properties & Land Investments, LLC (<https://landanddrivers.com>)



PLANTATION PROPERTIES & LAND INVESTMENTS, LLC

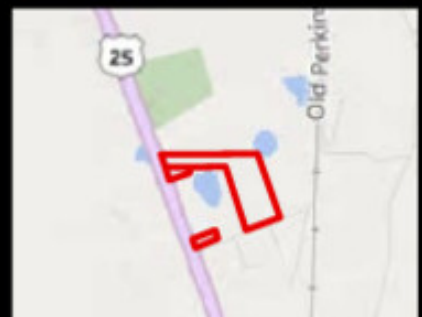
1207 Jernigan's Way, Suite 101 | Statesboro, GA 30458
919 264-1480 | 706 226-7533

Jason Williams

This document is not to be reproduced or duplicated

www.LandandDrivers.com

© 2012



Source URL: <https://landanddrivers.com/property/hwy-25-45-acs>