



Woodlands Tract

46+/- acres featuring mostly wooded land with a mix of merchantable and pre-merchantable timber and 4+/- acres of cultivated land along Hwy 46. This tract would make a great home place, weekend "get-a-way", hunting tract or investment opportunity for someone. You can enjoy farming, hunting, trail rides, camping and more all on your own land. Located in the Southeast Bulloch school district near the Bulloch County and Bryan County line only 25 miles from the Savannah/Hilton Head International Airport, 25 minutes to Pooler, and 30 minutes to downtown Savannah, this tract is in a very convenient location! Call today for more details or to view this property. (912)764-5263



Price: \$175,256

Property Type: Land

Status: Sold

Street/Address: Hwy 46

City: Ellabell

State: Georgia

Zip code: 31308

County: bulloch

Acreage: 46

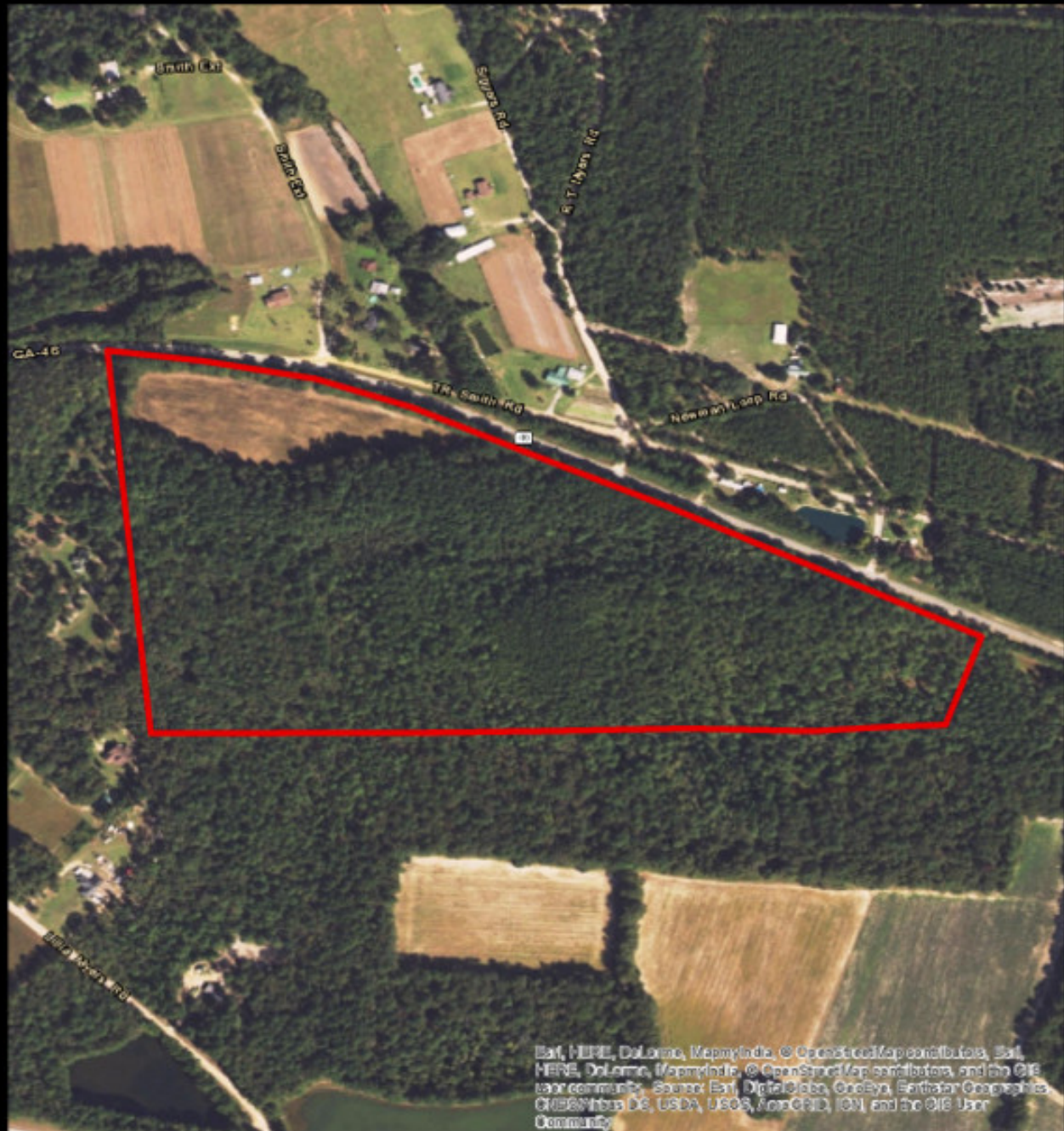
Per Acre Price: \$3,800.00

Phone Number: 912.764.5263

Email: info@landanddrivers.com

Google Maps link: [View Larger Map](#)

Aerial Map



**PLANTATION PROPERTIES
&
LAND INVESTMENTS, LLC**

1207 Woodlands Ave Suite 101 Statesboro, GA 30458
912 764-4444 (S260) | 769 746-0058
James Williams © 2019
This map is for informational purposes only. Not to be used for legal purposes.
www.landanddrivers.com



Topo Map



**PLANTATION PROPERTIES
&
LAND INVESTMENTS, LLC**

1207 Woodlands Way, Suite 101, Statesboro, GA 30458
912.764.4444 (S260) | 703.726.0038
James Williams © 2019
This map and its contents and any data listed
www.landanddrivers.com

