



Belmont Rd Ogeechee River Tract

This property is loaded with things to do to enjoy the outdoors. Containing 645± acres of rolling terrain and 7,100 feet of river frontage. Multiple roads throughout the tract make it easily accessible. Deer, duck, turkey and hog hunting are all plentiful on the property. The majority of the timber was cut in 2015. However, 160 acres of pine and hardwood merchantable timber remain. Only a few minutes from Louisville and Sandersville, this could be your new weekend retreat.



Price: \$918,400

Property Type: Land

Status: Sold

Street/Address:

City: Louisville

State: Georgia

Zip code: 30434

County: jefferson

Acreage: 645

Per Acre Price: \$1,422.00

Phone Number: 912.978.0890

Email: jforehand@landandrivers.com

Google Maps link: [View Larger Map](#)

Belmont Rd Ogeechee River Tract

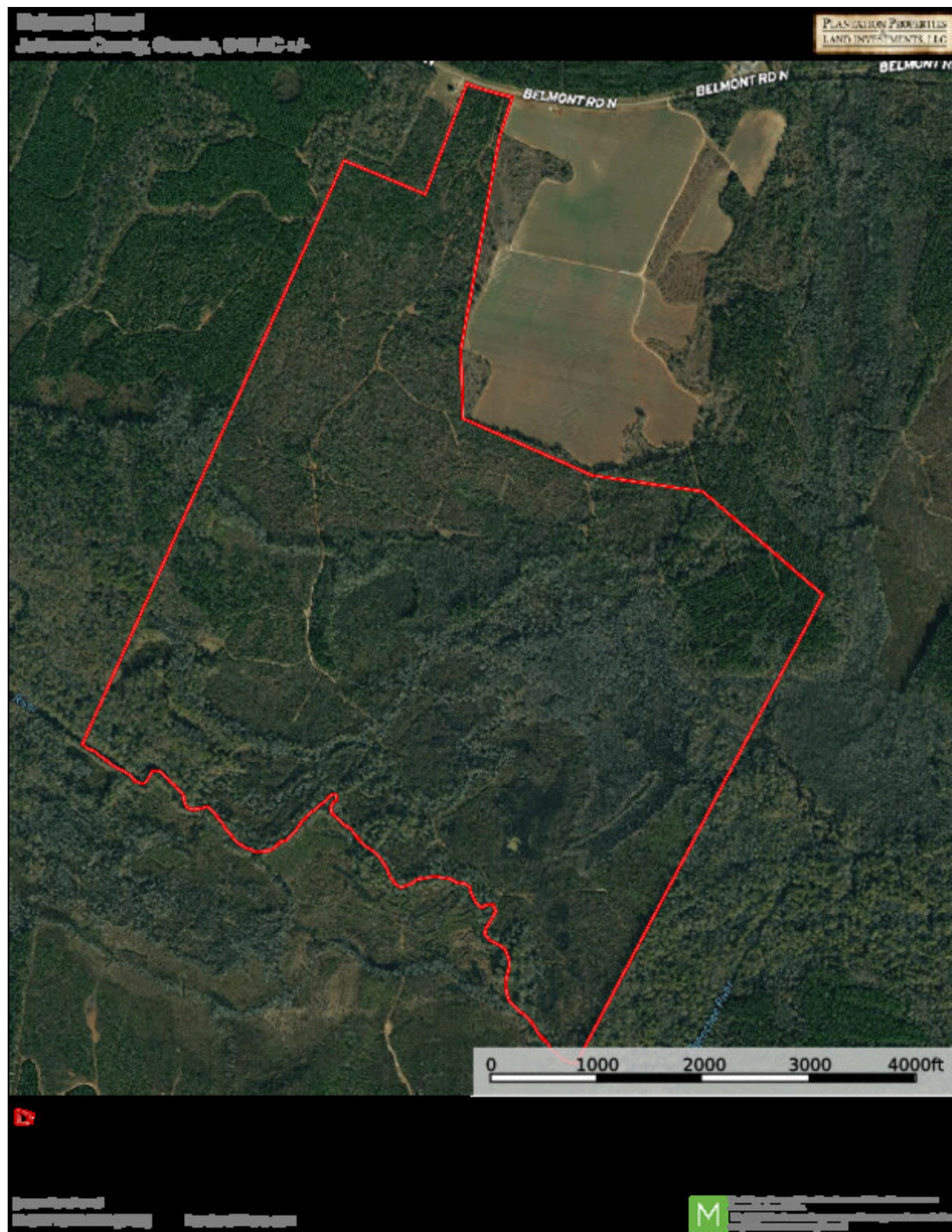
Published on Plantation Properties & Land Investments, LLC (<https://landandrivers.com>)



Aerial Map

Belmont Rd Ogeechee River Tract

Published on Plantation Properties & Land Investments, LLC (<https://landandrivers.com>)



Source URL: <https://landandrivers.com/property/belmont-rd-ogeechee-river-tract>