

## MP Martin - Tract 2

Published on Plantation Properties & Land Investments, LLC (<https://landandrivers.com>)

---



## MP Martin - Tract 2

This property is 43.43 acres of open and wooded land, located in Southeast Bulloch County, in the highly sought after Brooklet school district! It features 17± acres of cultivated land with frontage along Mud Road and Sand Hill Road; which would make it the perfect place to build your dream home. Just minutes from downtown Brooklet and convenient to Statesboro and I-16. See map for additional tracts available. Call Jason Williams today to schedule a showing. 912.764.LAND(5263)



**Price:** \$165,034

**Property Type:** Land

**Status:** Sold

**Street/Address:** Mud Rd.

**City:** Brooklet

**State:** Georgia

**Zip code:** 30415

**County:** bulloch

**Acreage:** 43

**Per Acre Price:** \$3,800.00

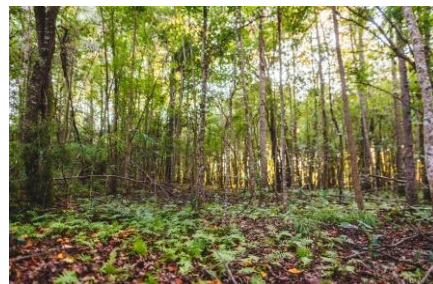
**Phone Number:** 912.764.LAND(5263)

**Email:** [info@LandandRivers.com](mailto:info@LandandRivers.com)

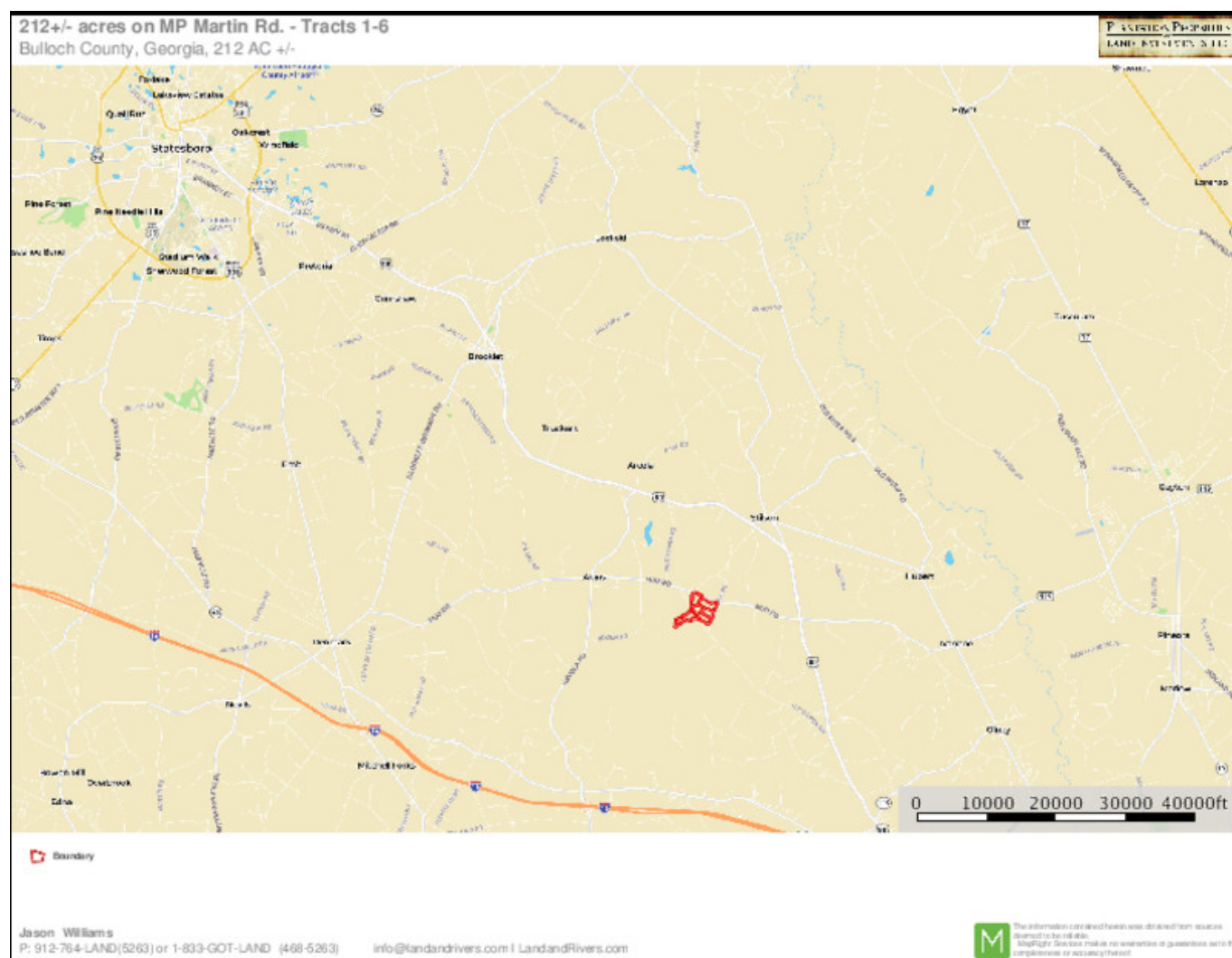
**Google Maps link:** [View Larger Map](#)

## MP Martin - Tract 2

Published on Plantation Properties & Land Investments, LLC (<https://landandrivers.com>)



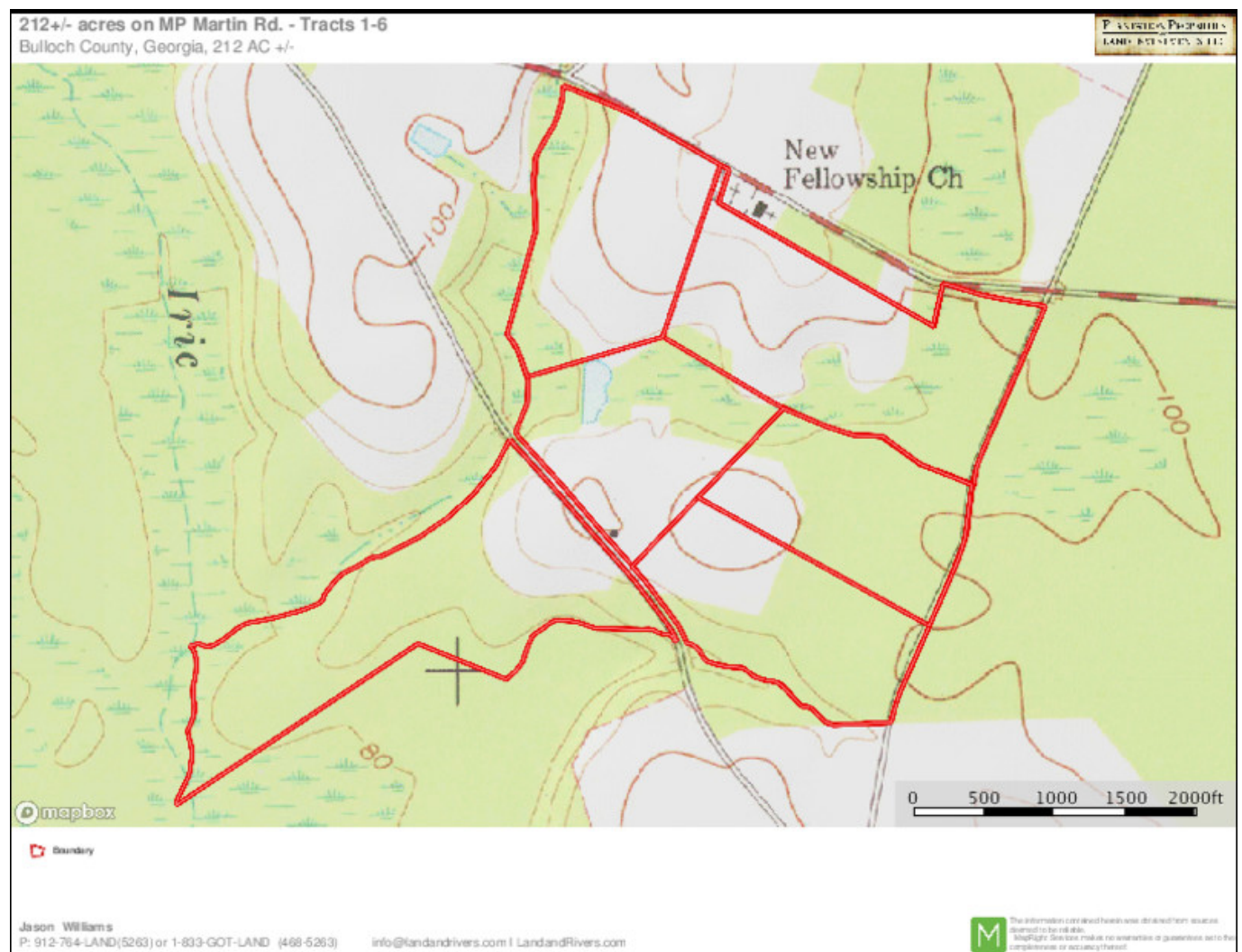
## Location map



## TOPO map

## MP Martin - Tract 2

Published on Plantation Properties & Land Investments, LLC (<https://landandrivers.com>)

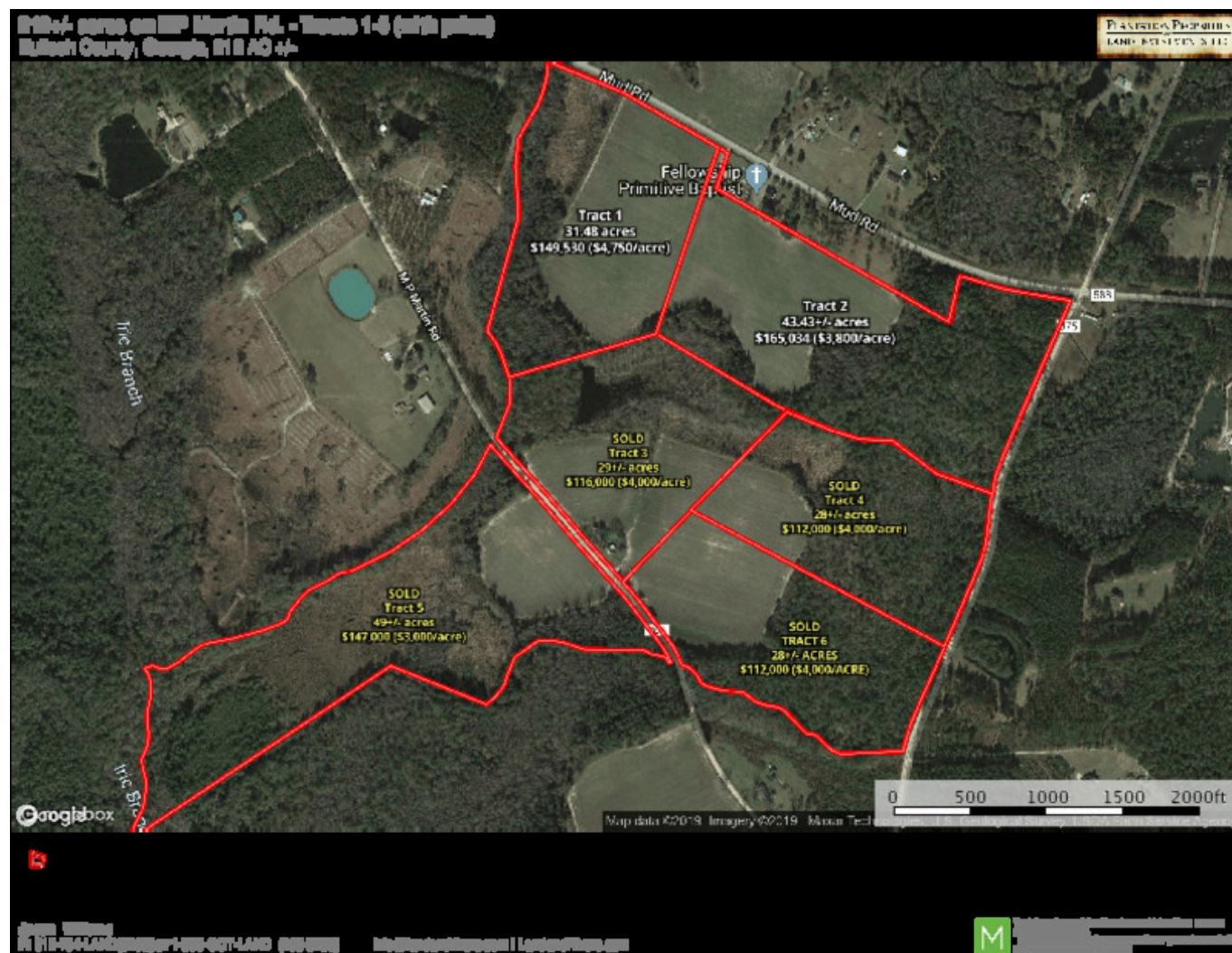


## Divided Aerial



## MP Martin - Tract 2

Published on Plantation Properties & Land Investments, LLC (<https://landanddrivers.com>)



Source URL: <https://landanddrivers.com/property/mp-martin-tract-2>