



## Holland Pines

PRICE REDUCED!!!!!! Holland Pines is a 74± acre timber and recreational property that would also be an ideal future home site. It consists widely of wooded acreage, including 36± acres of 18 year old Longleaf pine plantation and the remainder is mixed hardwood. The straw produced from the planted pines will provide extra income for the new owner. Located southwest of Statesboro in Register, off of Hwy 46 on Holland Road, it is just a few miles from I-16; making it convenient to Savannah. This property is a true refuge for wildlife such as deer, duck, turkeys and more; and is perfect for hunting, hikes, camping or trail rides. Your friends and family are sure to enjoy all this tract has to offer. Make Holland Pines your new home site, weekend retreat or venture property....the possibilities are endless. Call Jason Williams today to set up a showing! 912.764.LAND(5263)



**Price:** \$260,000

**Property Type:** Land

**Status:** Sold

**Street/Address:** Holland Rd.

**City:** Register

**State:** Georgia

**Zip code:** 30452

**County:** bulloch

**Acreage:** 74

**Per Acre Price:** \$0.00

**Phone Number:** 912.764.LAND(5263)

**Email:** [info@LandandRivers.com](mailto:info@LandandRivers.com)

**Google Maps link:** [View Larger Map](#)



## Holland Pines

Published on Plantation Properties & Land Investments, LLC (<https://landanddrivers.com>)

---

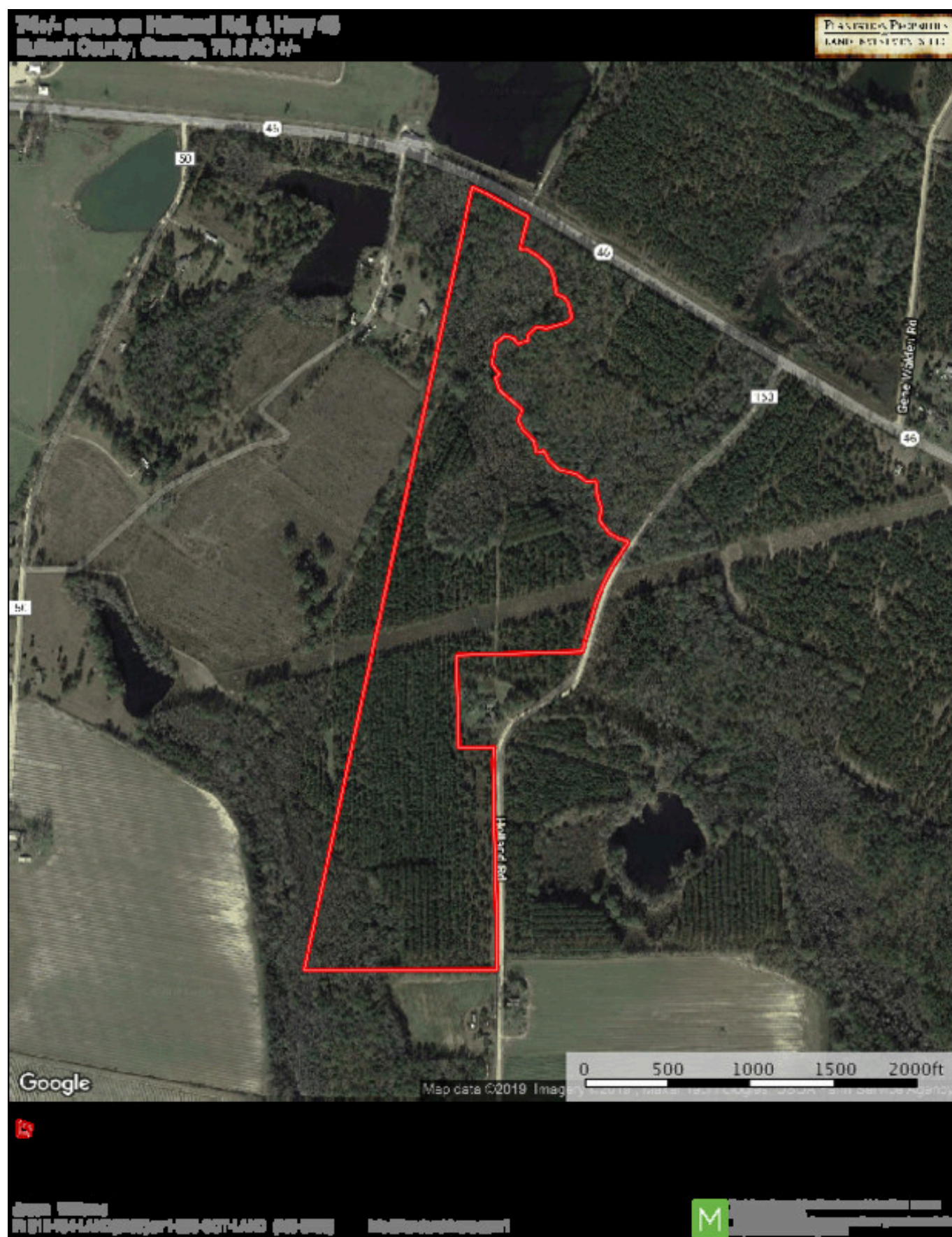


## Aerial map



## Holland Pines

Published on Plantation Properties & Land Investments, LLC (<https://landandrivers.com>)

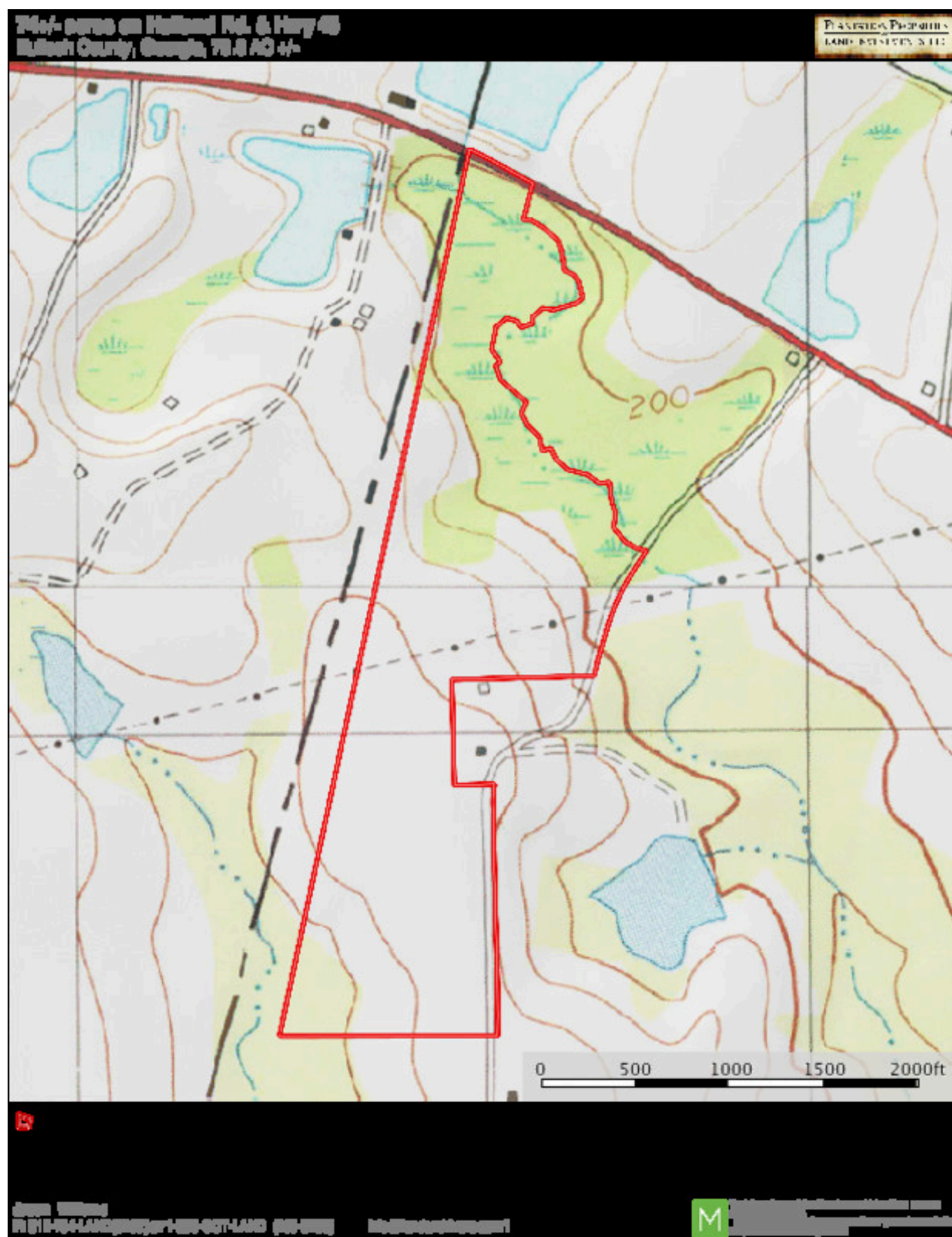


TOPO map



## Holland Pines

Published on Plantation Properties & Land Investments, LLC (<https://landandrivers.com>)

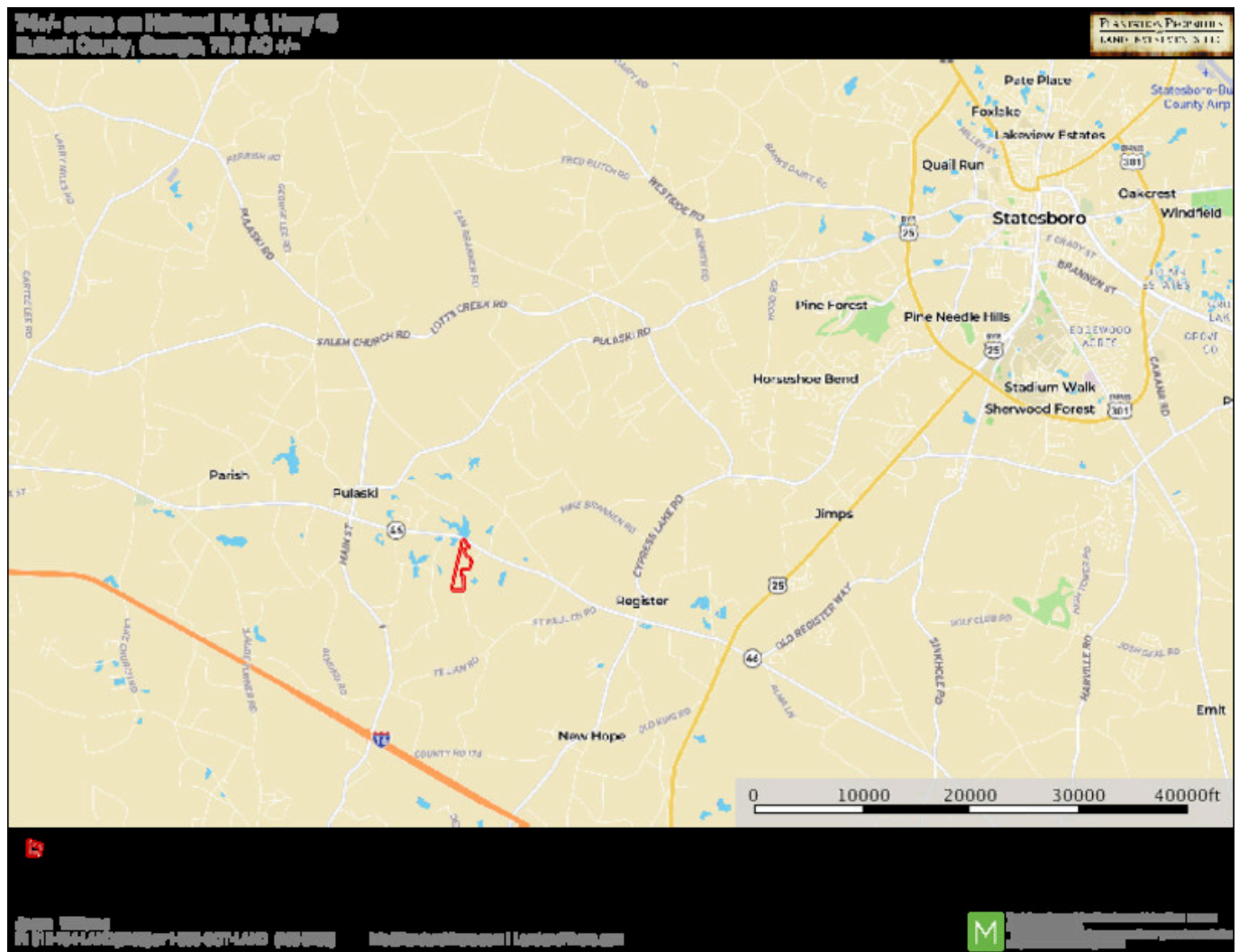


## Location map



## Holland Pines

Published on Plantation Properties & Land Investments, LLC (<https://landanddrivers.com>)



Source URL: <https://landanddrivers.com/property/holland-pines>