

Harville Road Tract 1

Published on Plantation Properties & Land Investments, LLC (<https://landandrivers.com>)



Harville Road Tract 1

7+/- acres of land in a prime location! Property features paved road frontage along Harville Road, 5+/- acres of cultivated land and 2+/- acres of wooded land. This property is in an ideal location only 4 miles from GSU campus, downtown Statesboro and convenient to I-16. Call Jason today (912) 764-LAND (5263)

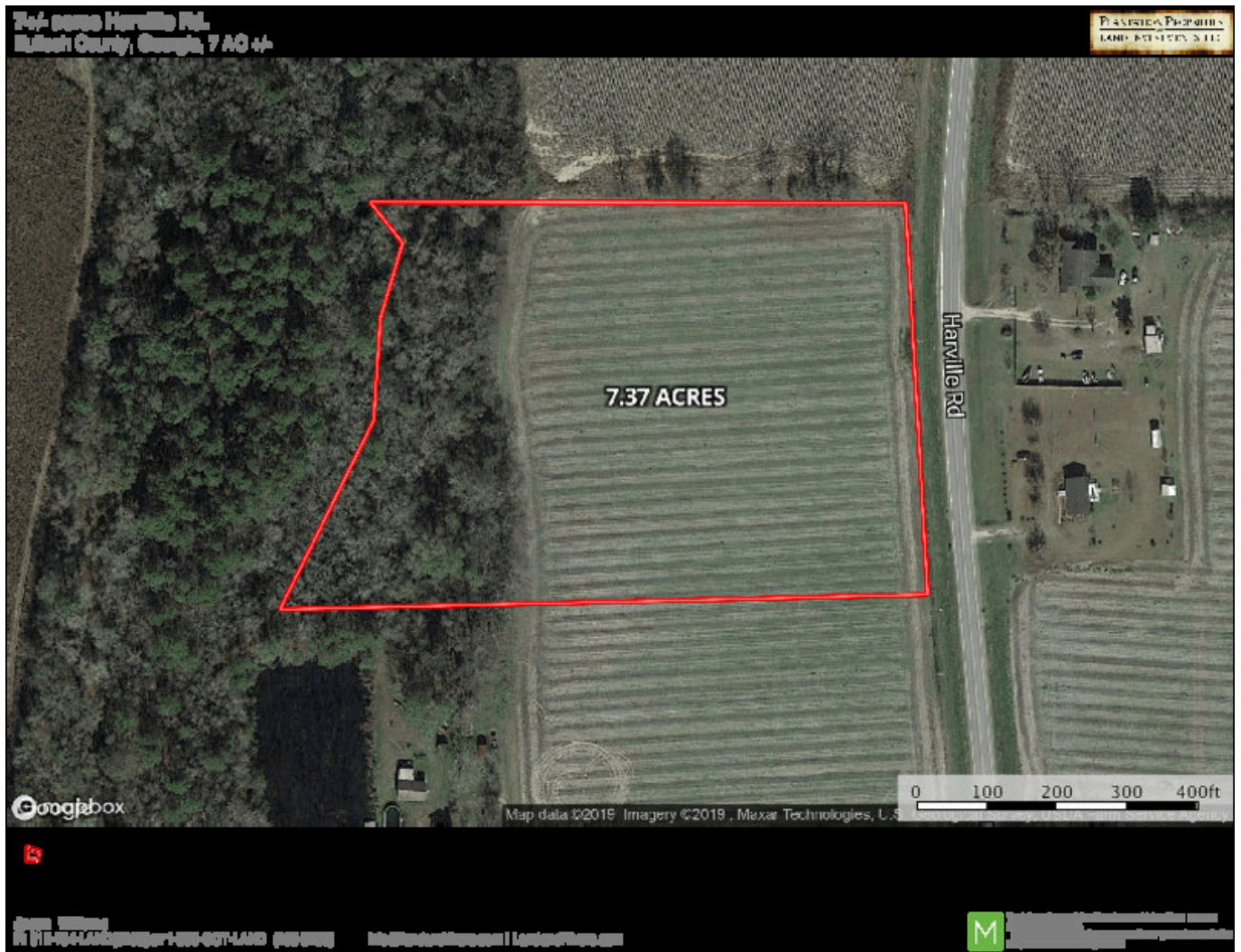


Price: \$105,000
Property Type: Land
Status: Sold
Street/Address: Harville Rd
City: Statesboro
State: Georgia
Zip code: 30458
County: bulloch
Acreage: 7
Per Acre Price: \$15,000.00
Phone Number:
Email: info@LandandRivers.com
Google Maps link: [View Larger Map](#)

Aerial Map

Harville Road Tract 1

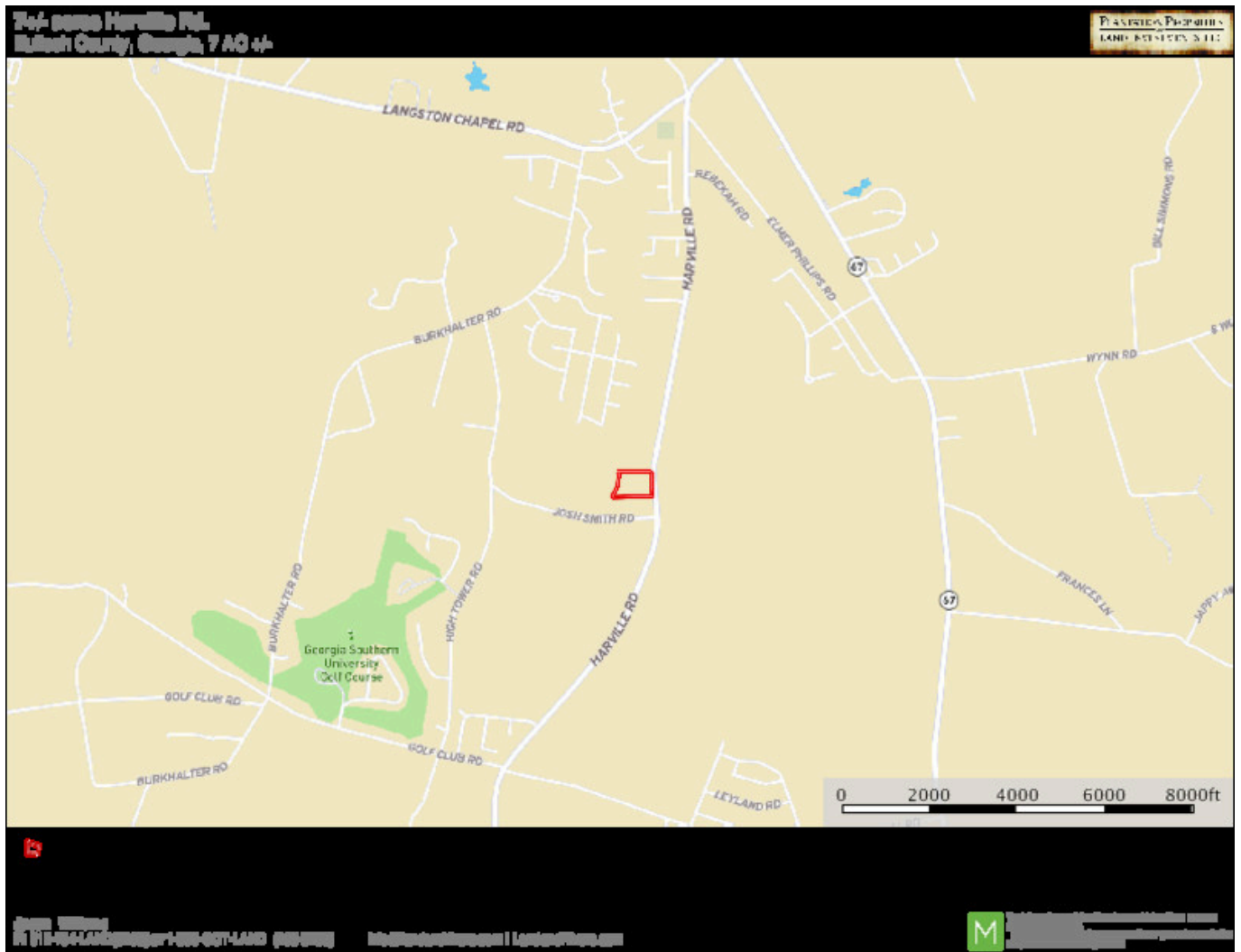
Published on Plantation Properties & Land Investments, LLC (<https://landanddrivers.com>)



Location Map

Harville Road Tract 1

Published on Plantation Properties & Land Investments, LLC (<https://landanddrivers.com>)



Tracts 1,2,3 Harville Rd

Harville Road Tract 1

Published on Plantation Properties & Land Investments, LLC (<https://landanddrivers.com>)



Source URL: <https://landanddrivers.com/property/harville-road-tract-1>