



Crooked Creek

Ideal investment opportunity! Crooked Creek is an 187± acre Timber and Recreation property in Wheeler County. Property features a beautiful 17+/- acre pecan orchard, 36+/- acres of 17 year old longleaf pines, 45+/- acres of 12 year old longleaf pines, 60+/- acres of natural pine and hardwoods on both sides of Crooked Creek and a small pond. Immediate return on investment with timber value of \$175,721 and pine straw contract already in place through 2022 (\$7,800 annually). Property is located only 1.5 hours to Macon, approx. 2 hours from Florida/Georgia line & 2 hours from Savannah. Call Jason Williams for more information (912)764-LAND (5263)



Price: \$490,000

Property Type: Land

Status: Sold

Street/Address: 2477 GA Hwy 19 S.

City: Lumber City

State: Georgia

Zip code: 31549

County: wheeler

Acreage: 187

Per Acre Price: \$0.00

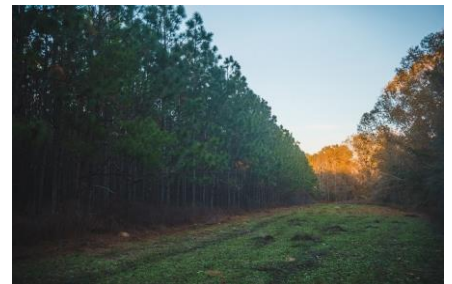
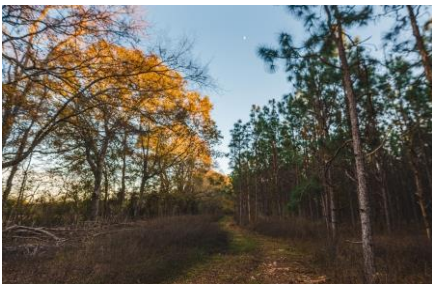
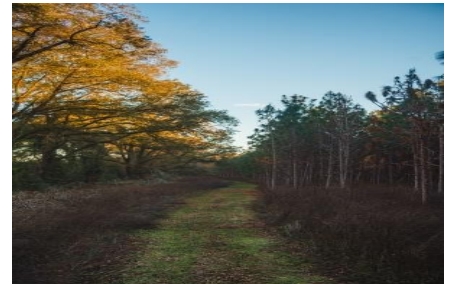
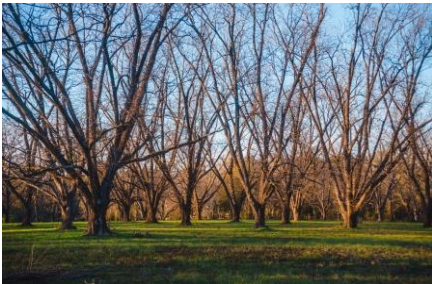
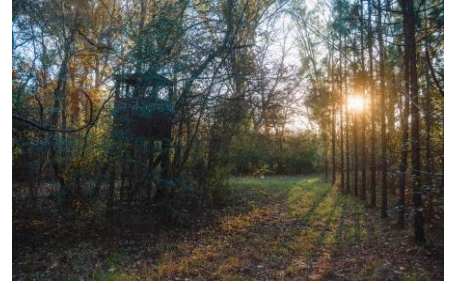
Phone Number: 912.764.LAND(5263)

Email: info@LandandRivers.com

Google Maps link: [View Larger Map](#)

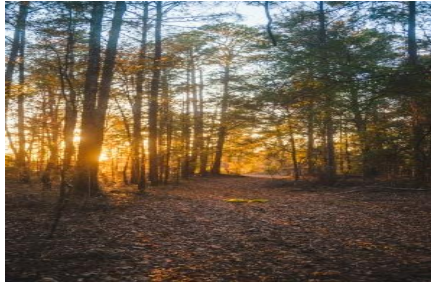
Crooked Creek

Published on Plantation Properties & Land Investments, LLC (<https://landandrivers.com>)



Crooked Creek

Published on Plantation Properties & Land Investments, LLC (<https://landandrivers.com>)



Aerial map

Crooked Creek

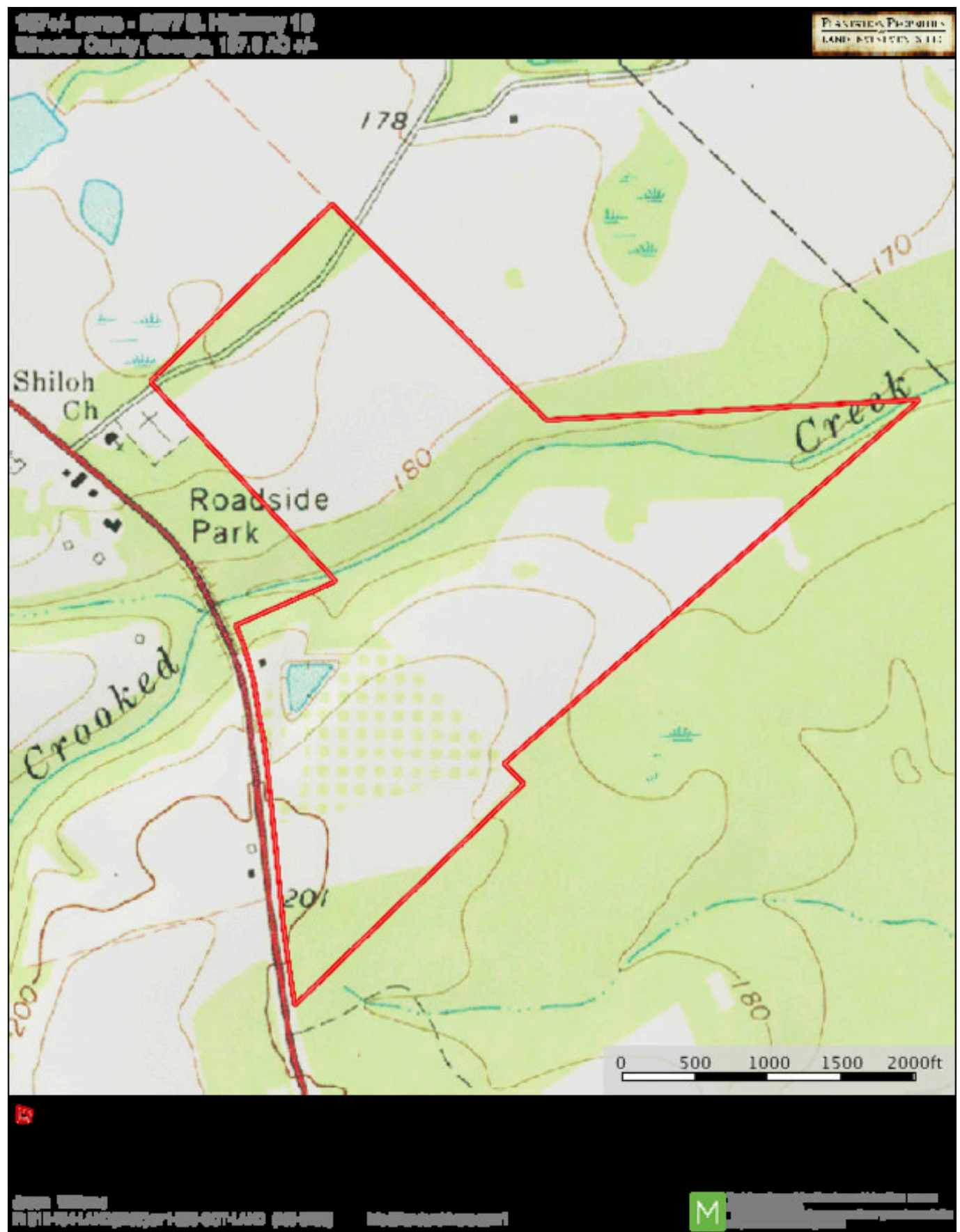
Published on Plantation Properties & Land Investments, LLC (<https://landandrivers.com>)



TOPO map

Crooked Creek

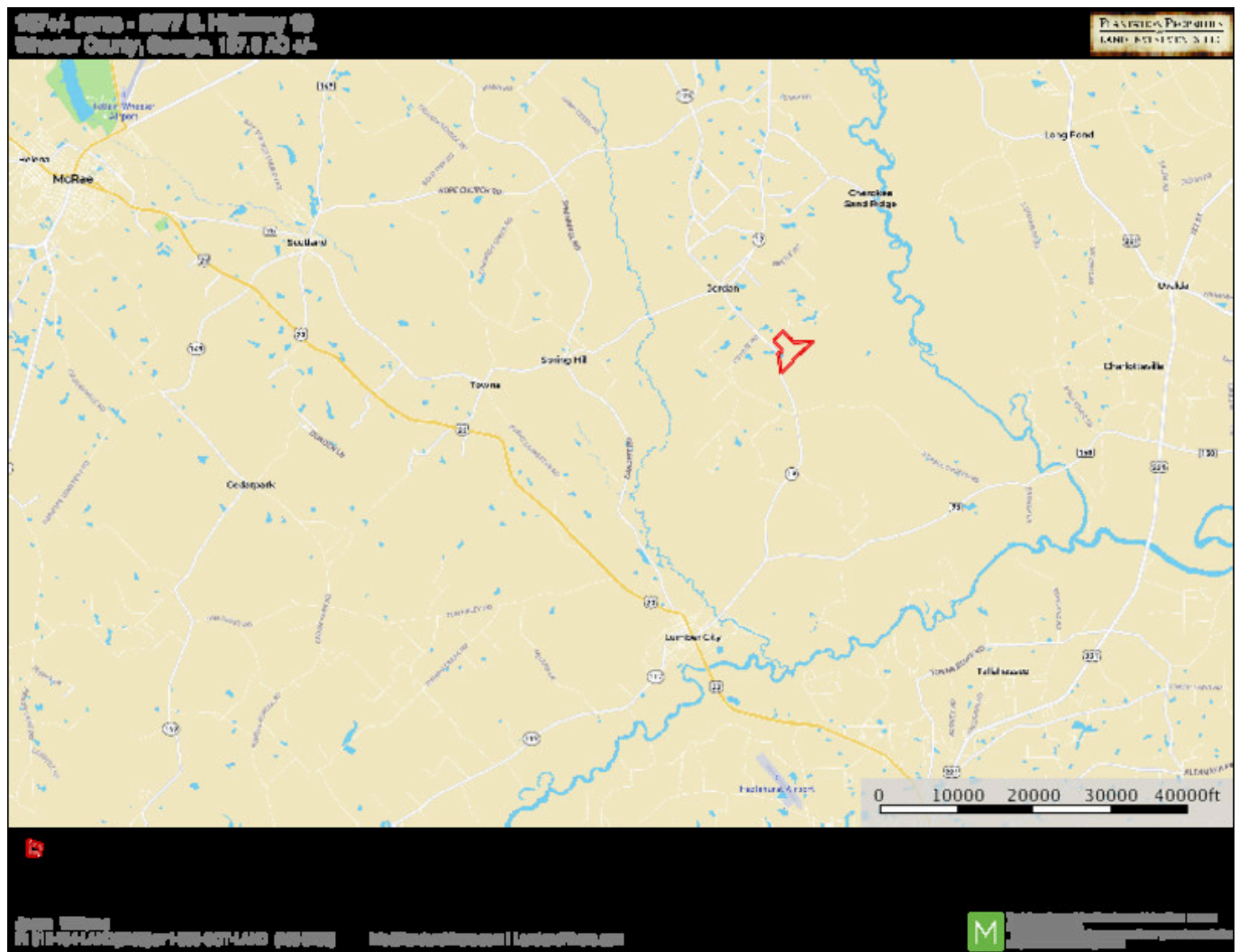
Published on Plantation Properties & Land Investments, LLC (<https://landandrivers.com>)



Location map

Crooked Creek

Published on Plantation Properties & Land Investments, LLC (<https://landanddrivers.com>)



Source URL: <https://landanddrivers.com/property/crooked-creek>