



Belcher Branch

PRICE REDUCED!!! Excellent investment, residential development and recreational opportunity in Bulloch County! 100± acres located north of downtown Statesboro off of Francis Scott Drive. Property is zoned R-25 for residential development and features wooded and open land with a great interior road system. This property is also available subdivided into two 50± acre tracts. Contact us today for more information! Jason Williams (912)764-LAND (5263)



Price: \$600,000

Property Type: Land

Status: Sold

Street/Address: Francis Scott Dr

City: Statesboro

State: Georgia

Zip code: 30458

County: bulloch

Acreage: 100

Per Acre Price: \$6,000.00

Phone Number: 912.764.LAND(5263)

Email: info@LandandRivers.com

Google Maps link: [View Larger Map](#)

Belcher Branch

Published on Plantation Properties & Land Investments, LLC (<https://landanddrivers.com>)



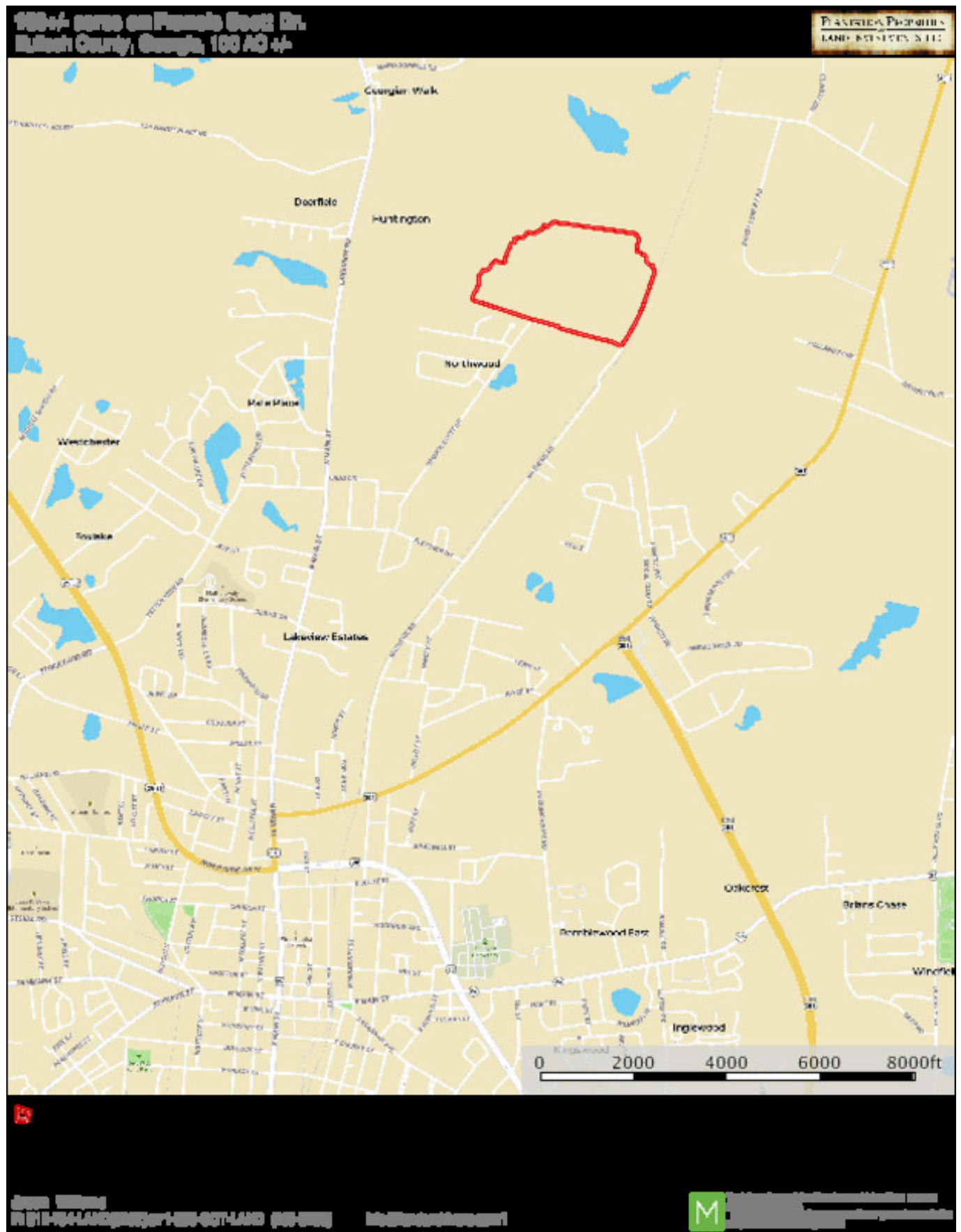
Aerial Map



Location Map

Belcher Branch

Published on Plantation Properties & Land Investments, LLC (<https://landandrivers.com>)

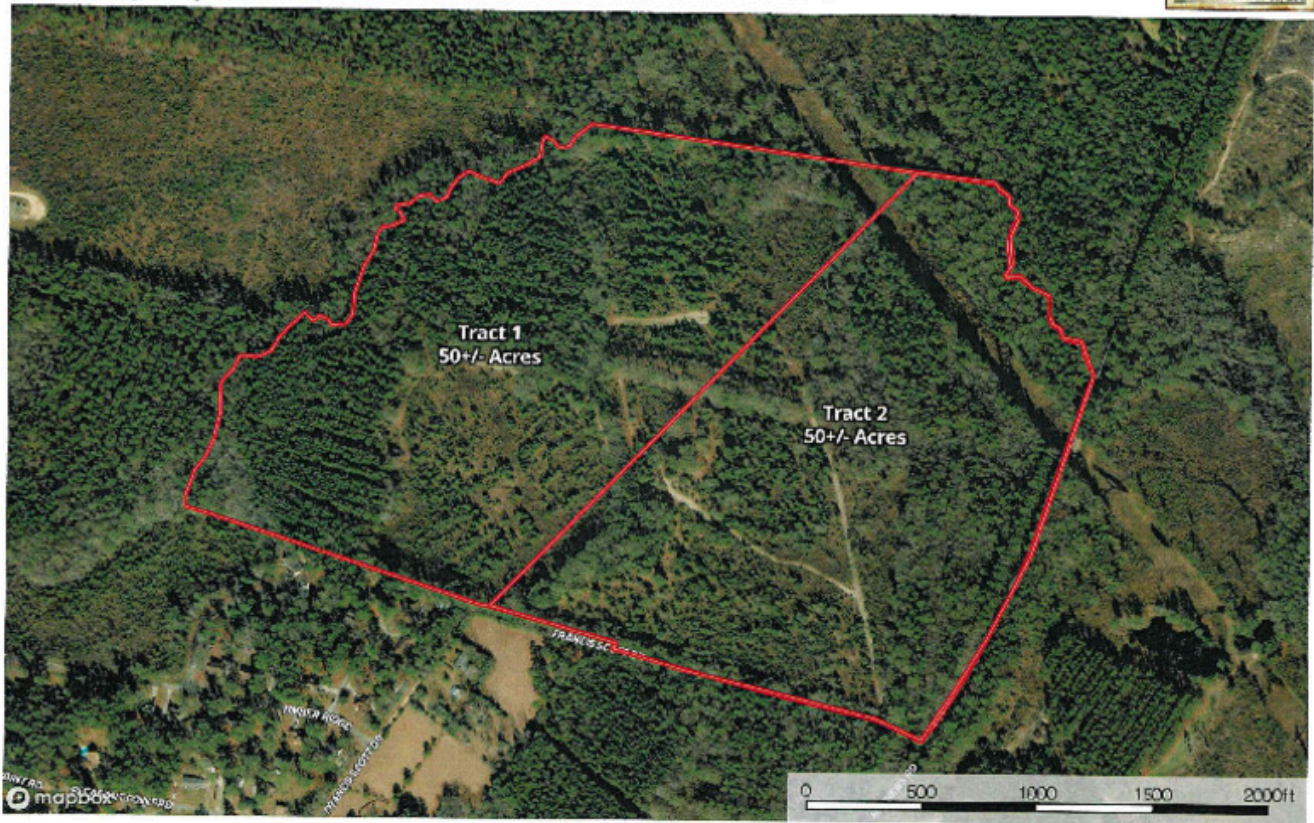


Subdivided Aerial

Belcher Branch

Published on Plantation Properties & Land Investments, LLC (<https://landandrivers.com>)

100+/- acres on Francis Scott Dr. - Subdivided
Bulloch County, Georgia, 100 AC +/-



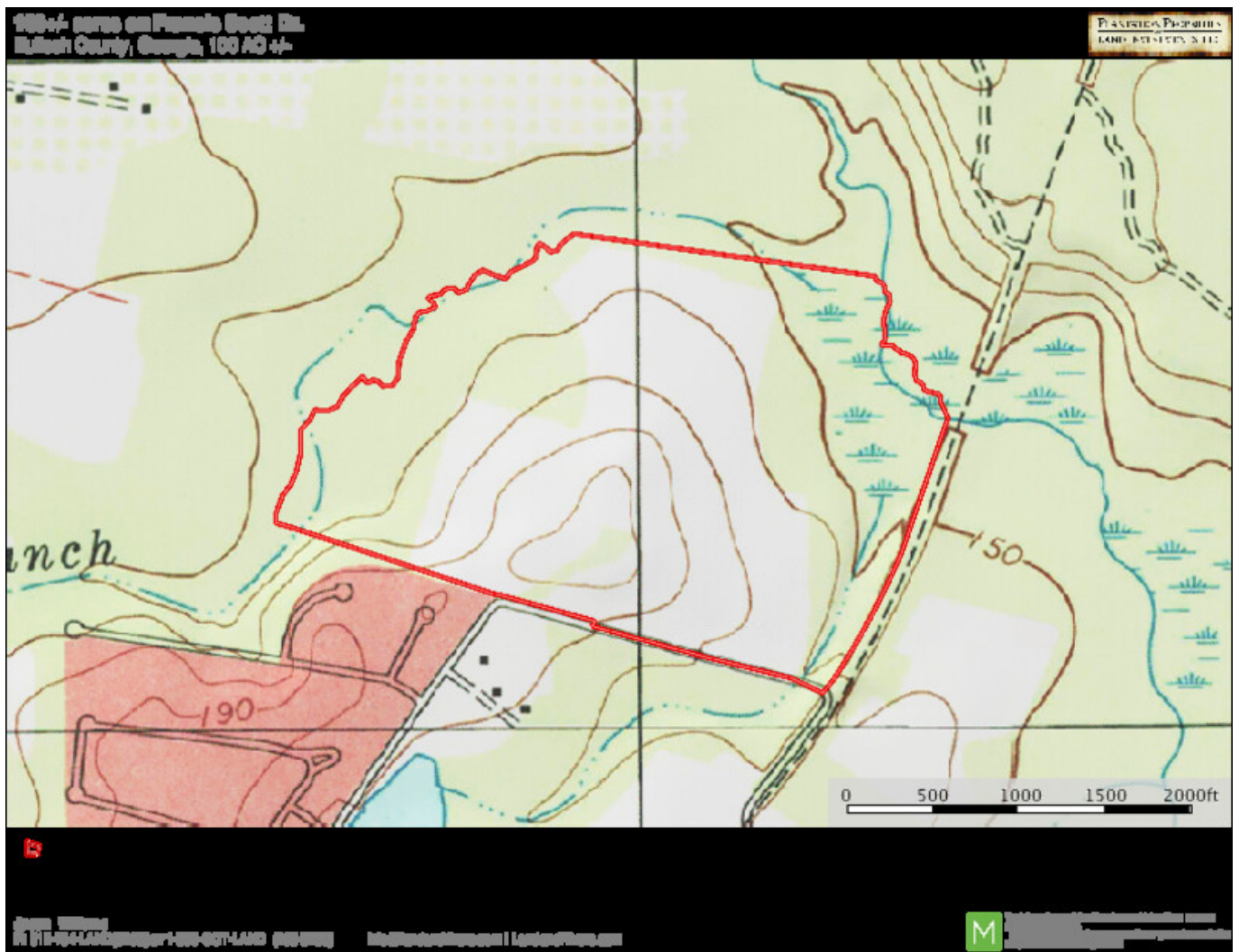
Jason Williams
P: 912-764-LAND(5225) or 1-833-307-LAND (438-5213) info@landandrivers.com | www.landandrivers.com



Topo Map

Belcher Branch

Published on Plantation Properties & Land Investments, LLC (<https://landanddrivers.com>)



Source URL: <https://landanddrivers.com/property/belcher-branch>