



Big Sandy Creek

Big Sandy Creek is 327± acres located in southern Wilkinson County. This property is the perfect combination of natural productivity coupled with management to produce great habitat and timber production. The majority of the property is made up of two different ages of Loblolly planted pine. Both stands are merchantable with the younger being ready for thinning. Approximately 70 acres of the upland portion of the property is planted in Long Leaf pine. A regimen of controlled burns has kept this portion as great upland habitat for a wide range of animals. Beaver Dam Branch and Big Sandy Creek lend the property its creek frontage. Both streams have small open areas that are perfect wood duck holes. It features over three quarters of a mile of frontage on each stream. These bottoms are timbered in natural hardwoods. They are a mixture of oak, black gum, and cypress. An extensive system of roads and trails connect the large food plots and timber stands. Several of the food plots are overlooked by large, permanent shooting houses that no doubt make for a comfortable hunt on those cold mornings. The hunting in this area is among the best anywhere in the state. Low hunting pressure and superb habitat on this property make it one of the most game rich properties we have seen in a long time. Populations of deer, turkey, and hogs are strong and sign can be seen throughout the property. Located on the front of the property is a small field that will serve for a dove field or large food plot. The cabin is a three bedroom, two bath mobile home with a metal roof. This home is in great shape and provides all of the comforts of home while in hunting camp. The property will sell with the majority of the furnishings for the home included. A large screened porch looks out over the bird field and provides a great place to relax and socialize after a day in the field. Two out buildings and a portable carport make for perfect storage for ATVs and all of the accessories needed for a recreational property. Very rarely does a property this size offer the diversity, beauty, and timber investment that can be found here. Couple that with the fact that all of the major developments for recreation are already in place, and its new owner will be walking into a truly turnkey property. Please give us a call for more information or to schedule your tour.



Big Sandy Creek

Published on Plantation Properties & Land Investments, LLC (<https://landandrivers.com>)

Price: \$687,057

Property Type: Land

Status: Sold

Street/Address: 1640 Beaver Dam Road

City: toombsboro

State: Georgia

Zip code: 31090

County: wilkinson

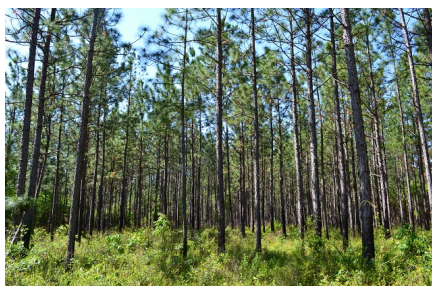
Acreage: 327

Per Acre Price: \$2,100.00

Phone Number: (478) 279-2148

Email: michael@landandrivers.com

Google Maps link: [View Larger Map](#)



Aerial map

Big Sandy Creek

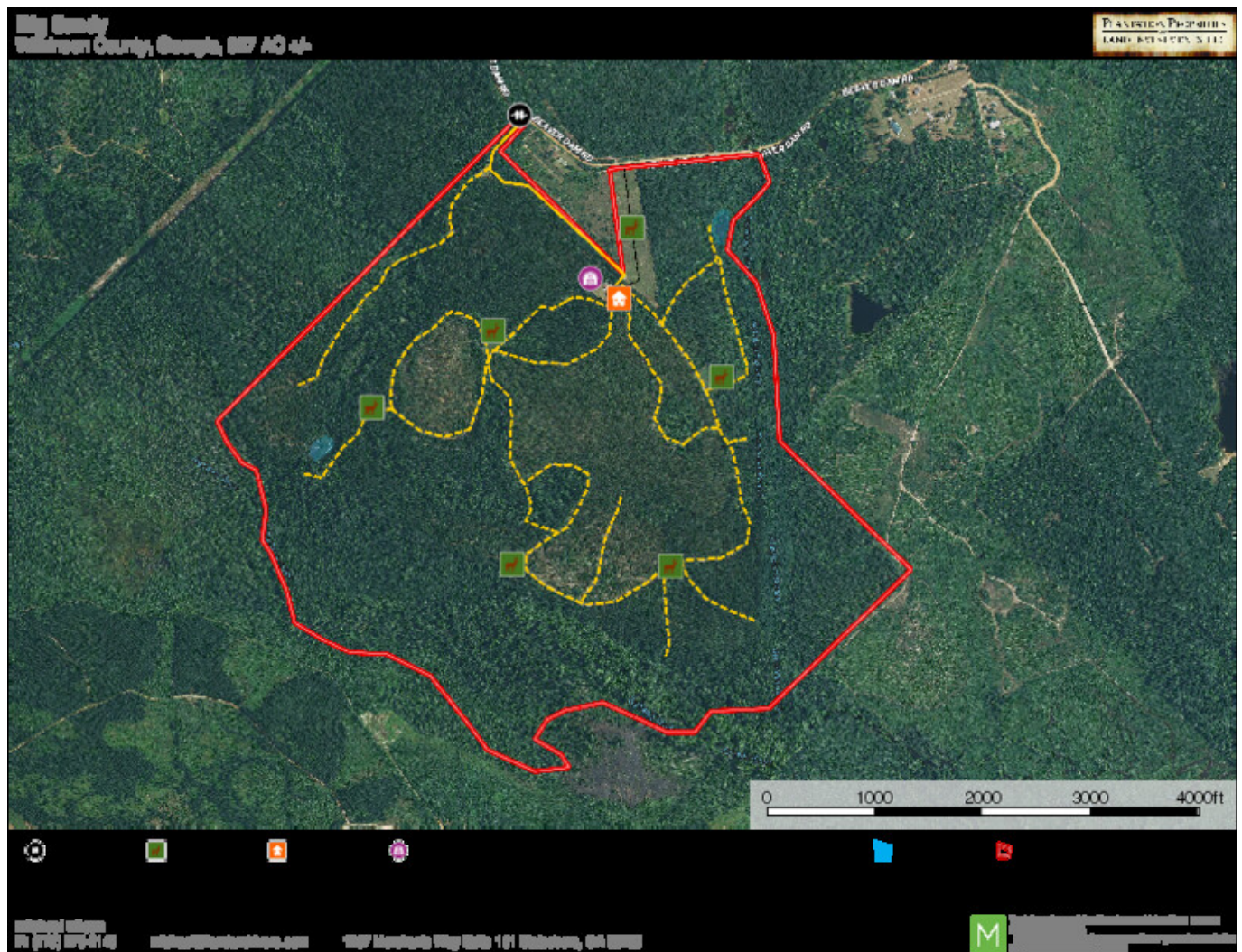
Published on Plantation Properties & Land Investments, LLC (<https://landandrivers.com>)



Detailed Aerial

Big Sandy Creek

Published on Plantation Properties & Land Investments, LLC (<https://landandrivers.com>)



Source URL: <https://landandrivers.com/property/big-sandy-creek>