



Spell Road Retreat

Spell Road Retreat is an immaculate, multi-use farm in Candler County with endless opportunity! A charming log home with a large deck overlooking a pond is the central focus of the 34± acre property; which also features a small area of mature pines, fenced pasture land and natural hardwoods. The 2,311 sq. ft. home features a large living area with heart pine floors and stone fireplace, a spacious kitchen, 4 bedrooms, 3 baths, an office that could easily convert to a 5th bedroom and a basement. Other structures include a home office or guest house with a kitchen and bath, a 30x60 equipment shelter, two shelters on concrete slabs (18x90 & 18x45), a 4-stall horse barn and a small horse shelter. In addition to the well that services the home, there is also a 4" well that feeds the ponds and the home has a backup Generac generator that will power the whole house. The property slopes gently to a hard wood bottom and Stoney Creek. This borders neighboring pine plantations and provides perfect habitat for deer and turkey. There are two tower stands that cover this bottom for muzzle loader or rifle hunting and one ladder stand for bow hunting. Whether you are looking for a place to call home, weekend retreat, equestrian or hobby farm, this well-maintained property is a must see! Work from home with full cell service and high speed fiber optic internet. Avoid the crowds and COVID. Enjoy relaxing on the dock, sitting around the fire pit on chilly nights, horseback or ATV riding, and much more all on your own land. Conveniently located north of Metter, GA and approximately 20 minutes from Statesboro, GA, this property is just 10 miles from I-16, where you can be in Savannah in approximately 1 hour, Macon in 1.5 hours or Jacksonville in less than 3 hours. This turn-key property won't last long. Call us today to schedule a private showing! 912.764.LAND(5263)



Price: \$495,000

Property Type: Residential

Status: Sold

Street/Address: 2323 Spell Rd.

Spell Road Retreat

Published on Plantation Properties & Land Investments, LLC (<https://landandrivers.com>)

City: Metter

State: Georgia

Zip code: 30439

County: candler

Acreage: 34

Per Acre Price: \$0.00

Phone Number: 912.764.LAND(5263)

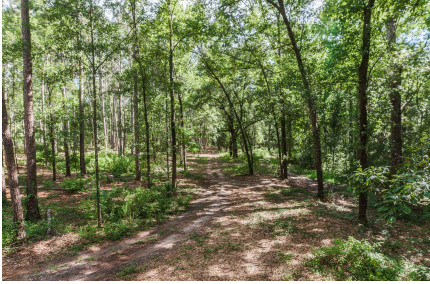
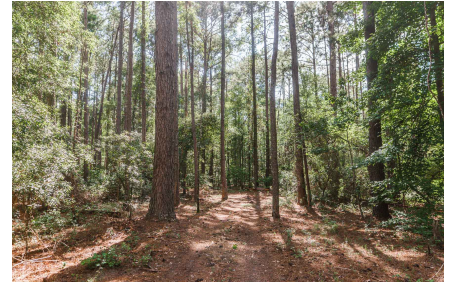
Email: info@LandandRivers.com

Google Maps link: [View Larger Map](#)



Spell Road Retreat

Published on Plantation Properties & Land Investments, LLC (<https://landandrivers.com>)



Spell Road Retreat

Published on Plantation Properties & Land Investments, LLC (<https://landandrivers.com>)



Spell Road Retreat

Published on Plantation Properties & Land Investments, LLC (<https://landandrivers.com>)

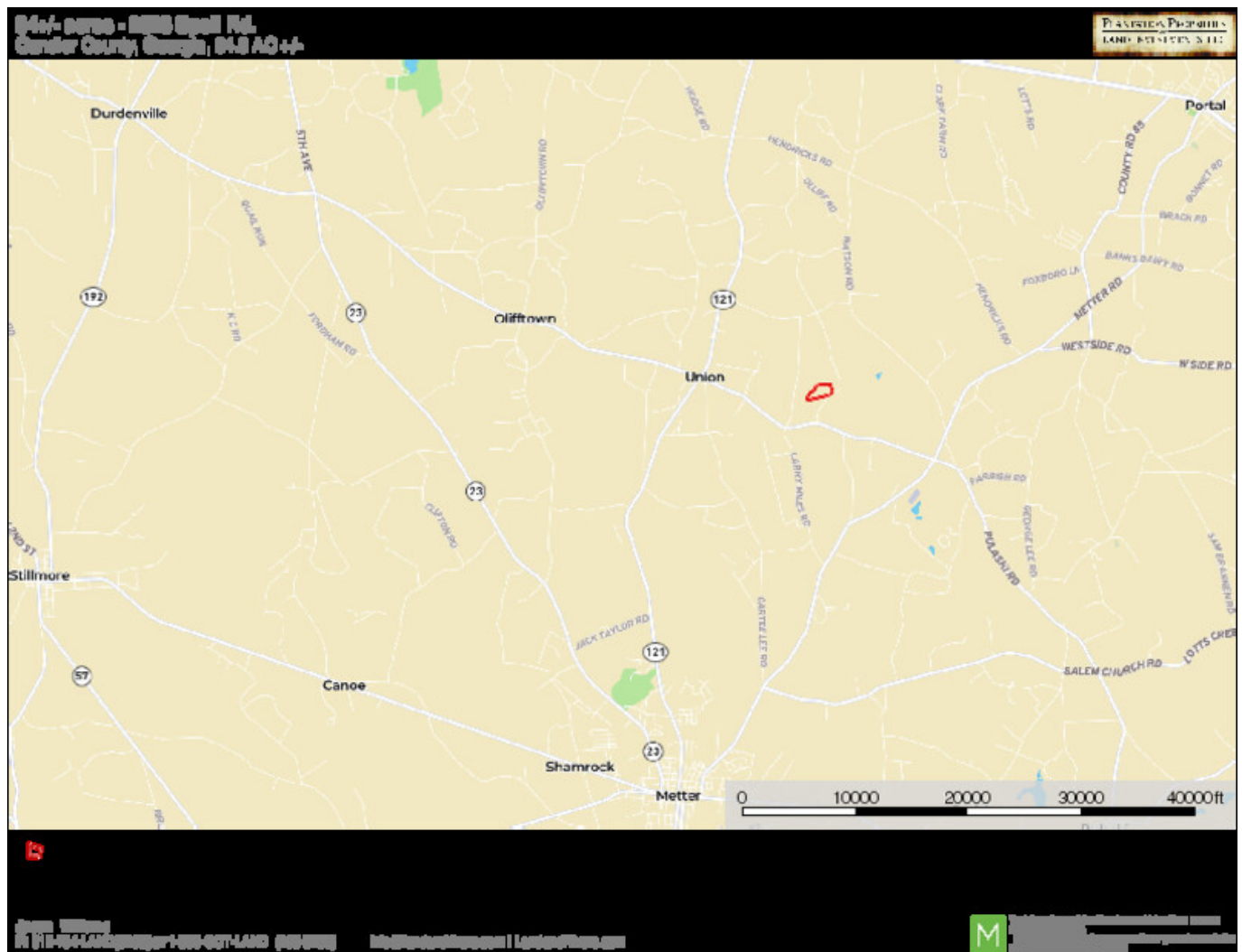
Aerial Map



Location Map

Spell Road Retreat

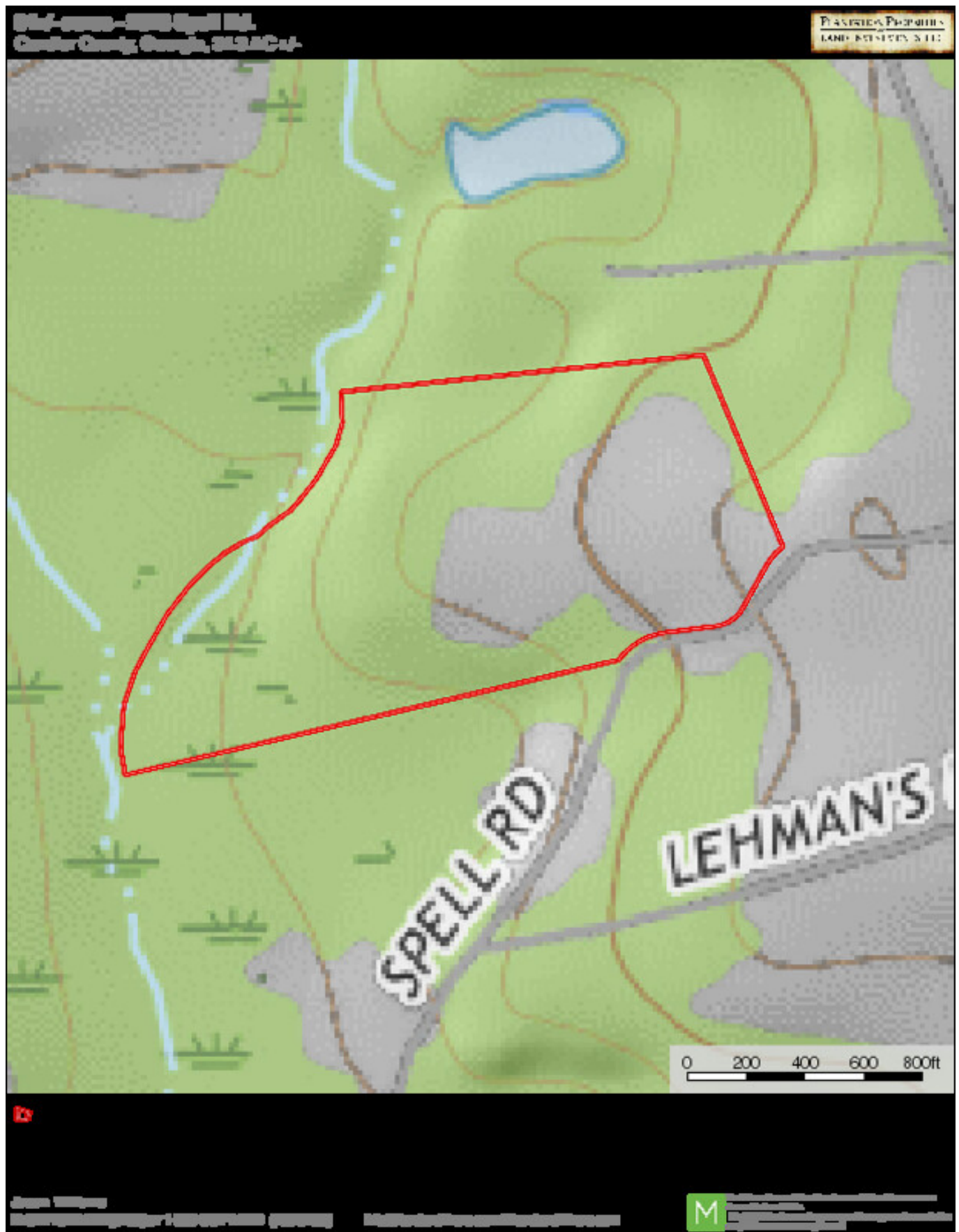
Published on Plantation Properties & Land Investments, LLC (<https://landandrivers.com>)



Topo Map

Spell Road Retreat

Published on Plantation Properties & Land Investments, LLC (<https://landanddrivers.com>)



Source URL: <https://landanddrivers.com/property/spell-road-retreat>