



Cypress Inn Bed & Breakfast

This beautiful 1906 Farm House was built for the Cross Family in Midville, GA. by the same man that built the Coleman House in Swainsboro. The house was renovated by Gene Hall 2003-2004. She stands majestically among oak trees and large pines on almost five acres of land. The house is of wood frame with pine floors and cypress interior walls. The renovations capture the charm of the 1900's era. The home rests quietly in cotton country surrounded by deer hunting clubs and fishing nearby in the Ogeechee River. This property is great for anyone looking for a quiet and quaint get-away spot, a hunting camp, wedding/ event venue, or just maintain the current bed & breakfast operations - This is such a unique property with an endless list of possibilities. Great investment with current cashflow. This property is only an hour to Savannah, one and a half hours to Tybee Island and approximately two hours to Hilton Head. Augusta is just under an hour away.



Price: \$350,000

Property Type: Residential

Status: Sold

Street/Address: 1643 Wadley Coleman Lake Road

City: midville

State: Georgia

Zip code: 30441

County: emanuel

Acreage: 4

Per Acre Price: \$0.00

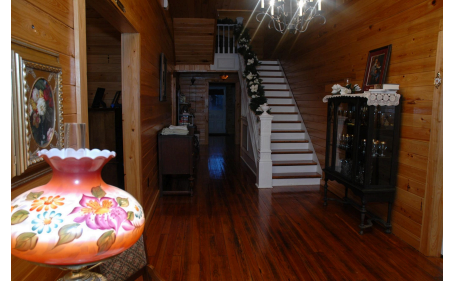
Phone Number: 6784145505

Email: jasebrooks@landandrivers.com

Google Maps link: [View Larger Map](#)

Cypress Inn Bed & Breakfast

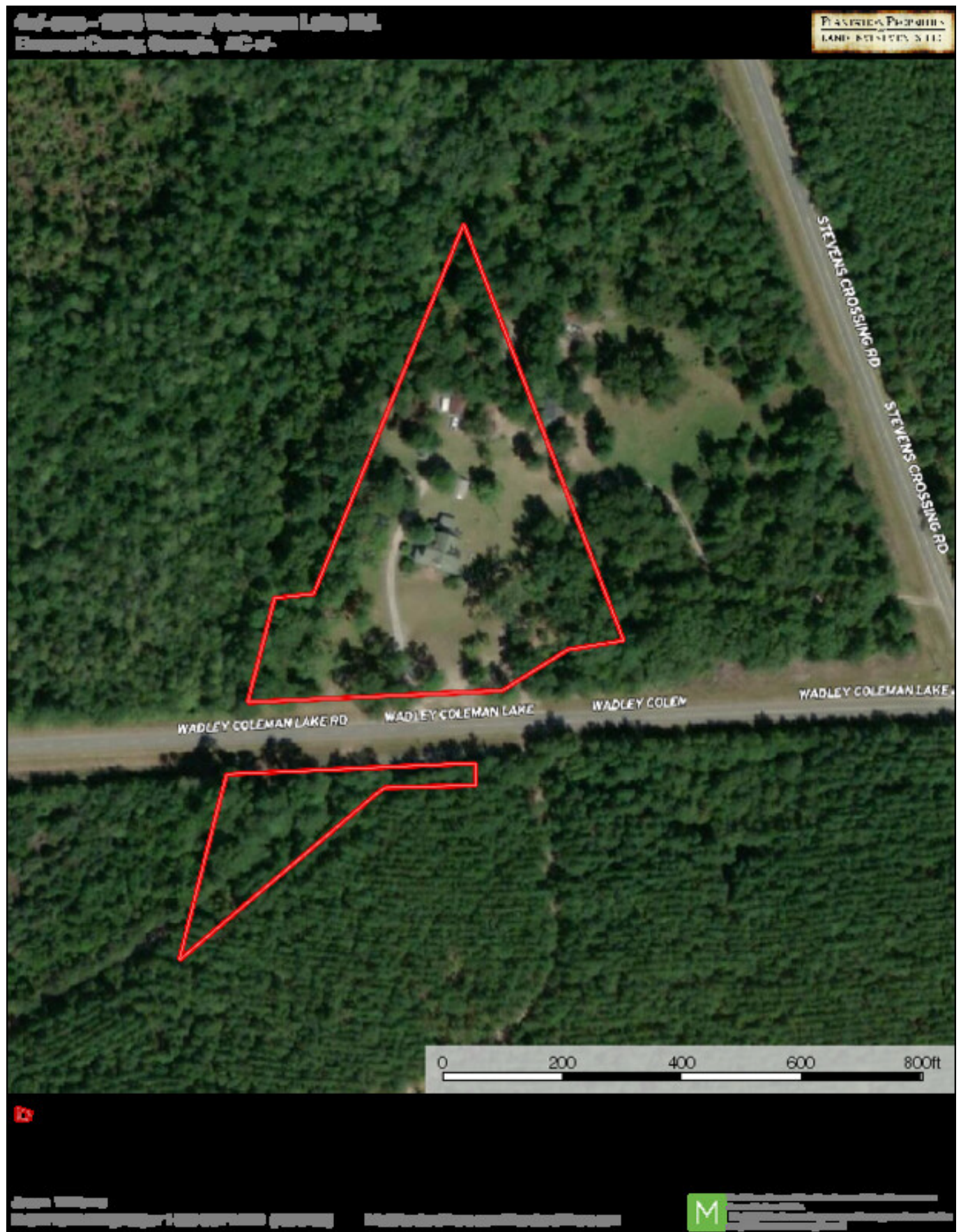
Published on Plantation Properties & Land Investments, LLC (<https://landandrivers.com>)



Aerial Map

Cypress Inn Bed & Breakfast

Published on Plantation Properties & Land Investments, LLC (<https://landandrivers.com>)



Source URL: <https://landandrivers.com/property/cypress-inn-bed-breakfast>