

Runs Branch Tract 2

Published on Plantation Properties & Land Investments, LLC (<https://landandrivers.com>)



Runs Branch Tract 2

Runs Branch Tract 2 - 10.01 acres located in Newington, GA with frontage along Hudson Ferry Rd. This property is timbered in 3 year old planted pines and will make a great home site. Less than 20 minutes from Sylvania and 1 hour from Savannah, GA. See map for additional tracts available. Call today to schedule a showing. 912.764.LAND(5263)



Price: \$42,542

Property Type: Land

Status: Sold

Street/Address: Hudson Ferry Rd.

City: Newington

State: Georgia

Zip code: 30446

County: screven

Acreage: 10

Per Acre Price: \$4,250.00

Phone Number: 912.764.LAND(5263)

Email: info@LandandRivers.com

Google Maps link: [View Larger Map](#)

Location Map

Runs Branch Tract 2

Published on Plantation Properties & Land Investments, LLC (<https://landandrivers.com>)



Topo Map

Runs Branch Tract 2

Published on Plantation Properties & Land Investments, LLC (<https://landanddrivers.com>)



Plat

Runs Branch Tract 2

Published on Plantation Properties & Land Investments, LLC (<https://landandrivers.com>)

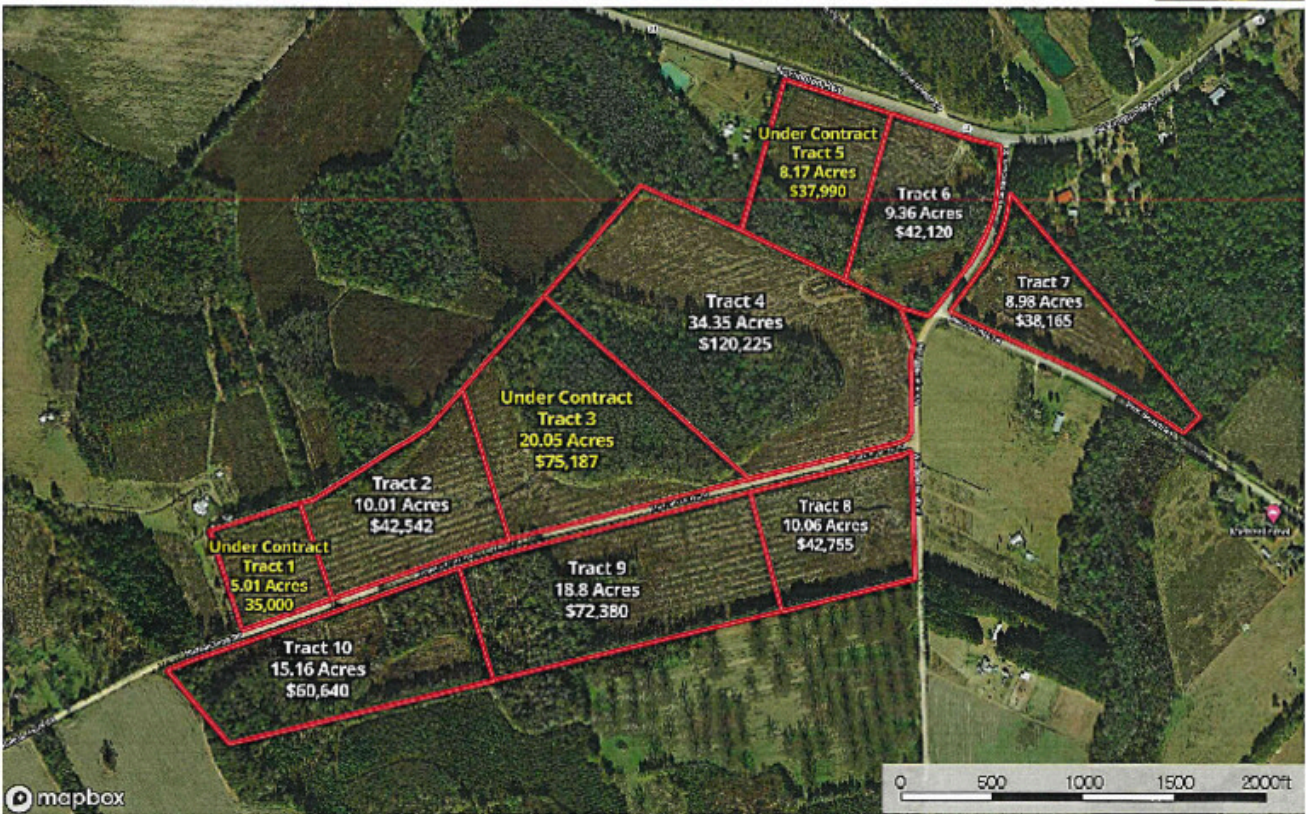


Aerial Map - Tracts 1-10

Runs Branch Tract 2

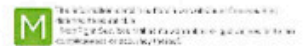
Published on Plantation Properties & Land Investments, LLC (<https://landanddrivers.com>)

Runs Branch Tracts 1-10
Screven County, Georgia, 138.85 AC +/-



mapbox

Jason Williams
P: 812-294-LAND(5200) or 1-800-007-LAND (163-6220) | info@landanddrivers.com | LandandDrivers.com



Source URL: <https://landanddrivers.com/property/runs-branch-tract-2>