

## Runs Branch Tract 8

Published on Plantation Properties & Land Investments, LLC (<https://landandrivers.com>)

---



## Runs Branch Tract 8

Runs Branch Tract 8 - 10.06 acres located in Newington, GA with frontage along Hudson Ferry Rd. & Woodpecker Trail. This property is timbered in 3 year old planted pines and will make a great home site. Less than 20 minutes from Sylvania and 1 hour from Savannah, GA. See map for additional tracts available. Call today to schedule a showing. 912.764.LAND(5263)



**Price:** \$42,755

**Property Type:** Land

**Status:** Sold

**Street/Address:** Hudson Ferry Rd.

**City:** Newington

**State:** Georgia

**Zip code:** 30446

**County:** screven

**Acreage:** 10

**Per Acre Price:** \$4,250.00

**Phone Number:** 912.764.LAND(5263)

**Email:** [info@LandandRivers.com](mailto:info@LandandRivers.com)

**Google Maps link:** [View Larger Map](#)

## Plat

## Runs Branch Tract 8

Published on Plantation Properties & Land Investments, LLC (<https://landandrivers.com>)

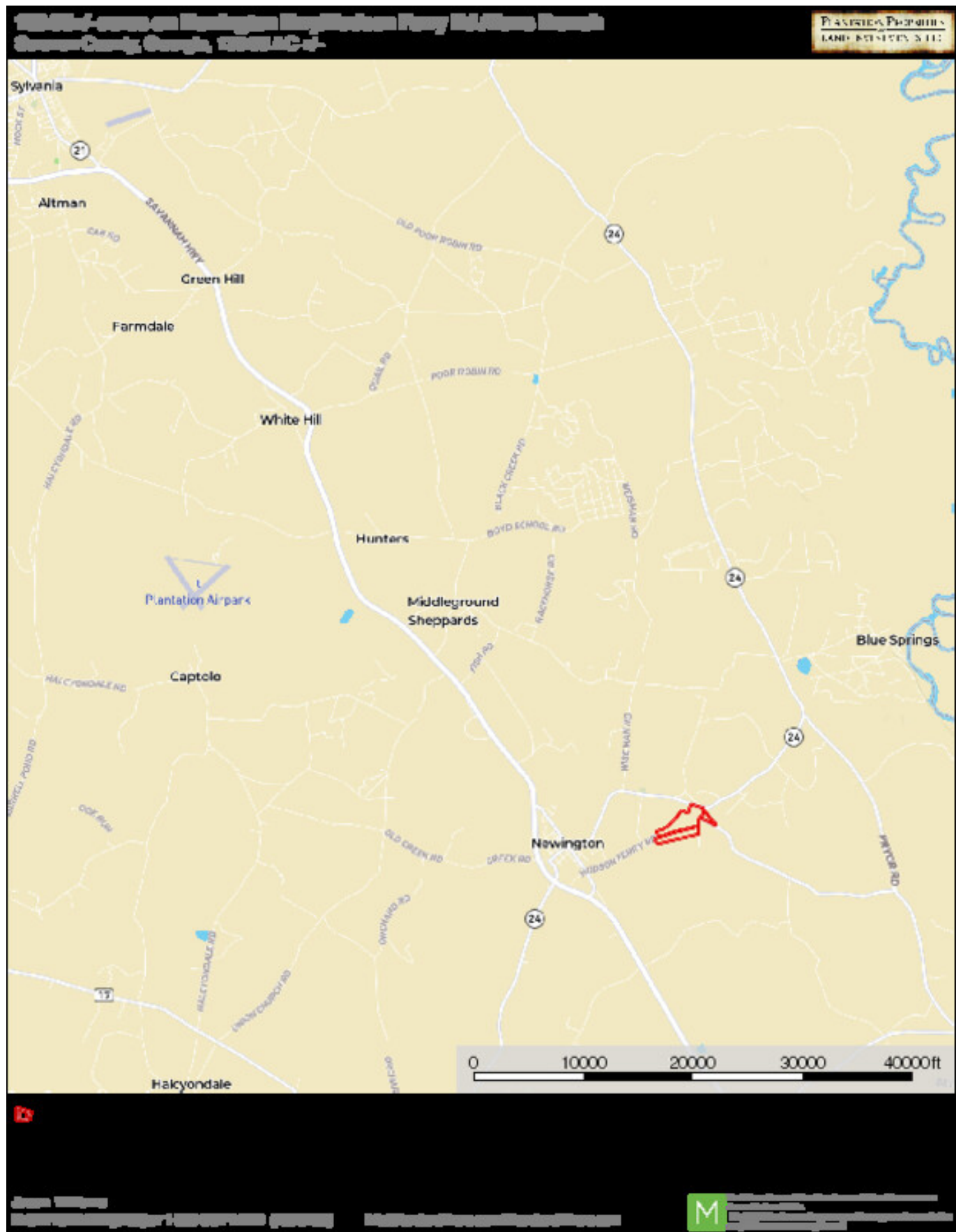
---



## Location Map

# Runs Branch Tract 8

Published on Plantation Properties & Land Investments, LLC (<https://landandrivers.com>)



## Topo Map

# Runs Branch Tract 8

Published on Plantation Properties & Land Investments, LLC (<https://landanddrivers.com>)



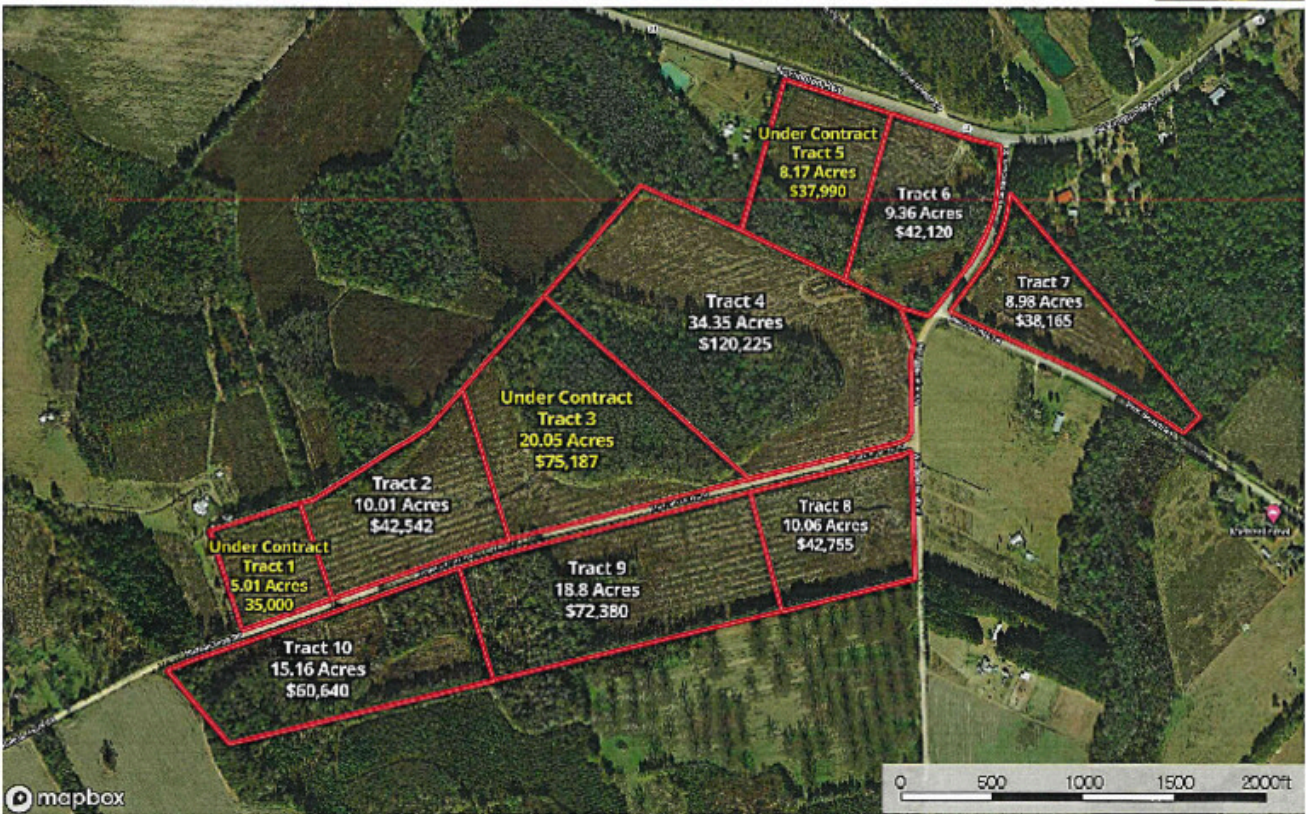
## Aerial Map - Tracts 1-10



# Runs Branch Tract 8

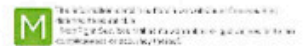
Published on Plantation Properties & Land Investments, LLC (<https://landanddrivers.com>)

Runs Branch Tracts 1-10  
Screven County, Georgia, 138.85 AC +/-



mapbox

Jason Williams  
P: 812-298-1440 (Toll Free) or 1-800-007-LAND (163-6223) | [info@landanddrivers.com](mailto:info@landanddrivers.com) | [LandandDrivers.com](http://LandandDrivers.com)



Source URL: <https://landanddrivers.com/property/runs-branch-tract-8>