

Runs Branch Tract 9

Published on Plantation Properties & Land Investments, LLC (<https://landandrivers.com>)



Runs Branch Tract 9

Runs Branch Tract 9 - 18.8 acres located in Newington, GA with frontage along Hudson Ferry Rd. With 3 year old planted pines and a natural hardwood area, this property has several good home sites. Less than 20 minutes from Sylvania and 1 hour from Savannah, GA. See map for additional tracts available. Call today to schedule a showing. 912.764.LAND(5263)



Price: \$72,380

Property Type: Land

Status: Sold

Street/Address: Hudson Ferry Rd.

City: Newington

State: Georgia

Zip code: 30446

County: screven

Acreage: 19

Per Acre Price: \$3,850.00

Phone Number: 912.764.LAND(5263)

Email: info@LandandRivers.com

Google Maps link: [View Larger Map](#)

Plat

Runs Branch Tract 9

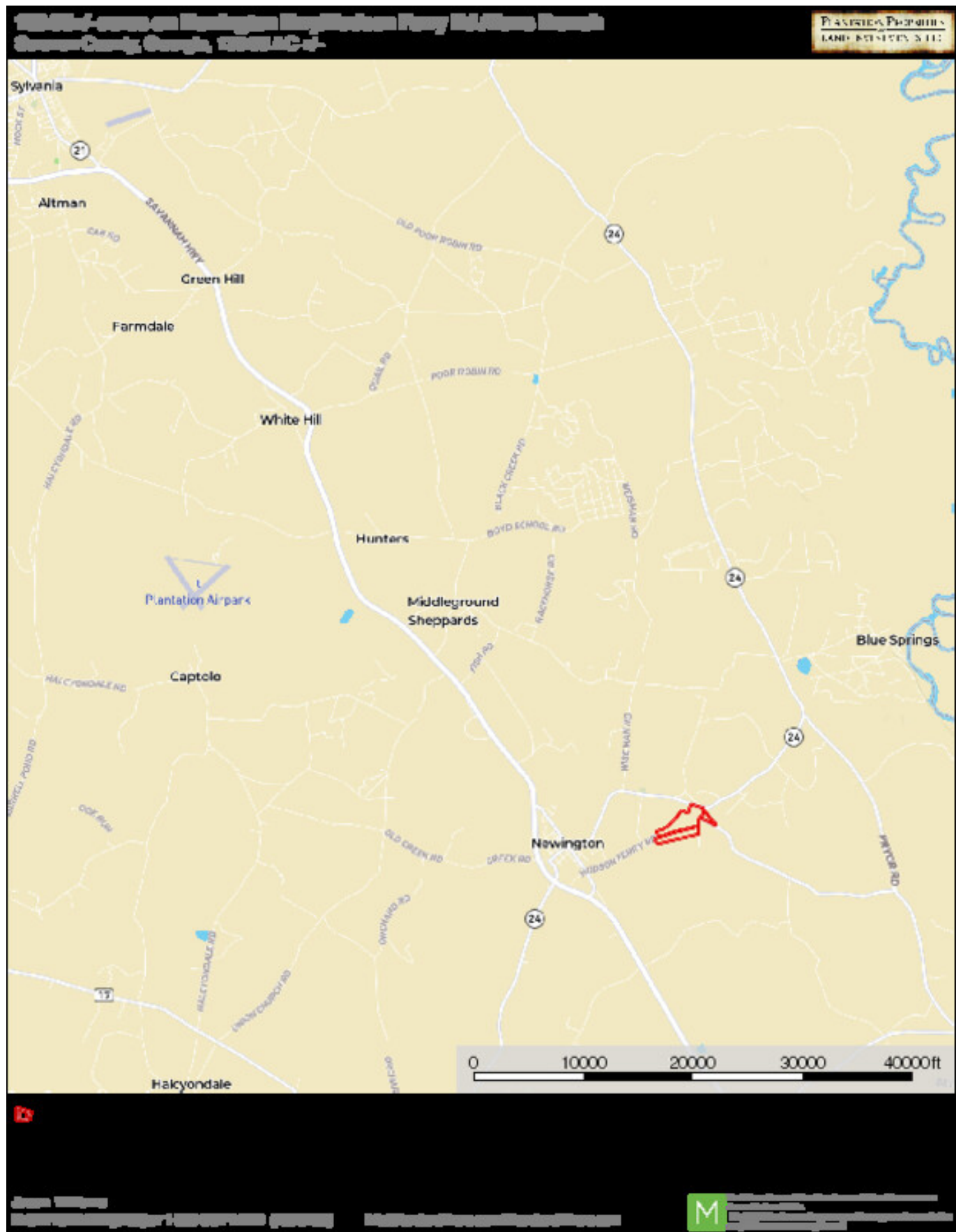
Published on Plantation Properties & Land Investments, LLC (<https://landandrivers.com>)



Location Map

Runs Branch Tract 9

Published on Plantation Properties & Land Investments, LLC (<https://landandrivers.com>)



Topo Map

Runs Branch Tract 9

Published on Plantation Properties & Land Investments, LLC (<https://landanddrivers.com>)

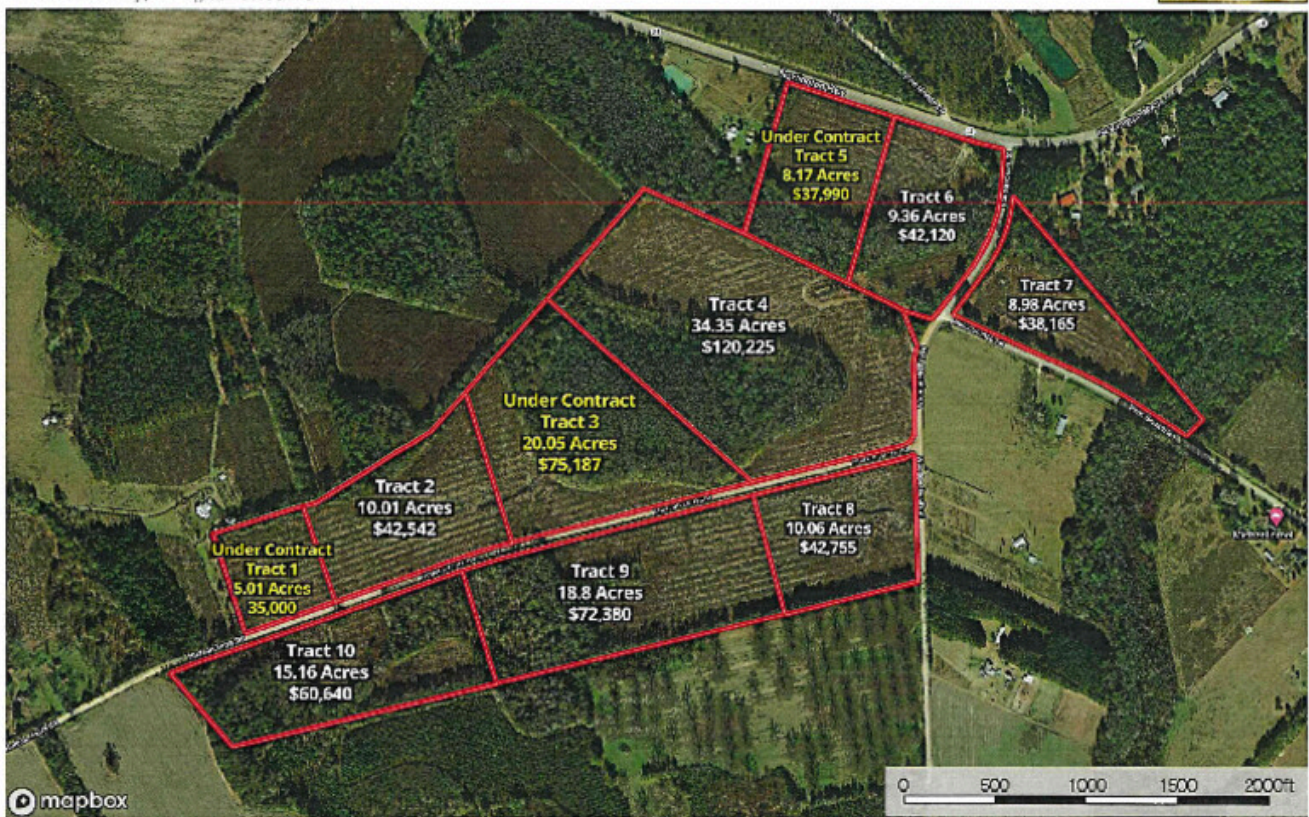


Aerial Map - Tracts 1-10

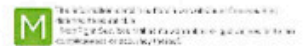
Runs Branch Tract 9

Published on Plantation Properties & Land Investments, LLC (<https://landanddrivers.com>)

Runs Branch Tracts 1-10
Screven County, Georgia, 138.85 AC +/-



Jason Williams
P: 812-298-1440 (T) 1-800-007-LAND (163-6226) | info@landanddrivers.com | LandandDrivers.com



Source URL: <https://landanddrivers.com/property/runs-branch-tract-9>