

Runs Branch Tract 10

Published on Plantation Properties & Land Investments, LLC (<https://landandrivers.com>)



Runs Branch Tract 10

Runs Branch Tract 10 - 15.16 acres located in Newington, GA with frontage along Hudson Ferry Rd. With 3 year old planted pines and natural wooded areas throughout, this property has several good home sites. Less than 20 minutes from Sylvania and 1 hour from Savannah, GA. See map for additional tracts available. Call today to schedule a showing. 912.764.LAND(5263)



Price: \$60,640

Property Type: Land

Status: Sold

Street/Address: Hudson Ferry Rd.

City: Newington

State: Georgia

Zip code: 30446

County: screven

Acreage: 15

Per Acre Price: \$4,000.00

Phone Number: 912.764.LAND(5263)

Email: info@LandandRivers.com

Google Maps link: [View Larger Map](#)

Plat

Runs Branch Tract 10

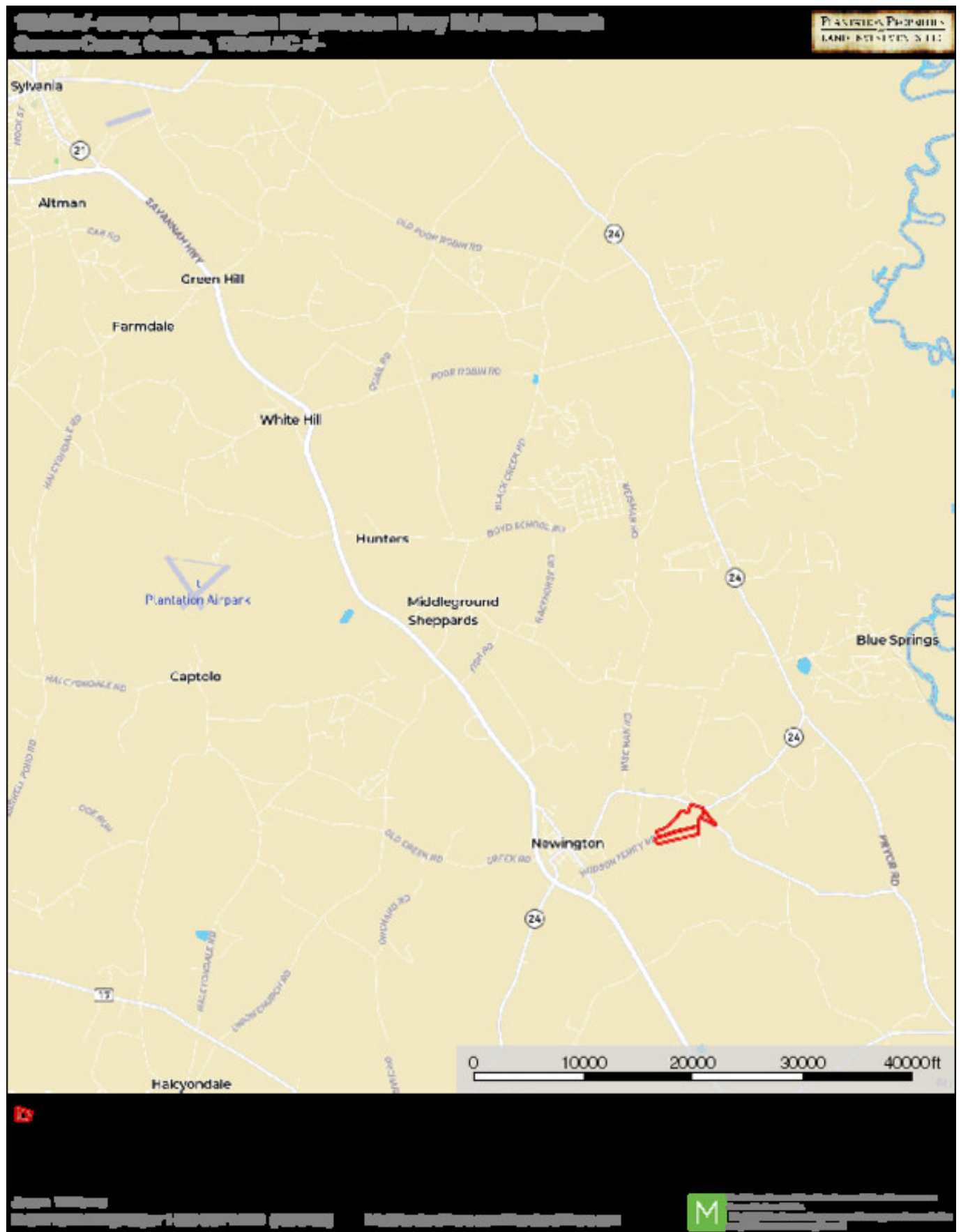
Published on Plantation Properties & Land Investments, LLC (<https://landandrivers.com>)



Location Map

Runs Branch Tract 10

Published on Plantation Properties & Land Investments, LLC (<https://landandrivers.com>)



Topo Map

Runs Branch Tract 10

Published on Plantation Properties & Land Investments, LLC (<https://landanddrivers.com>)

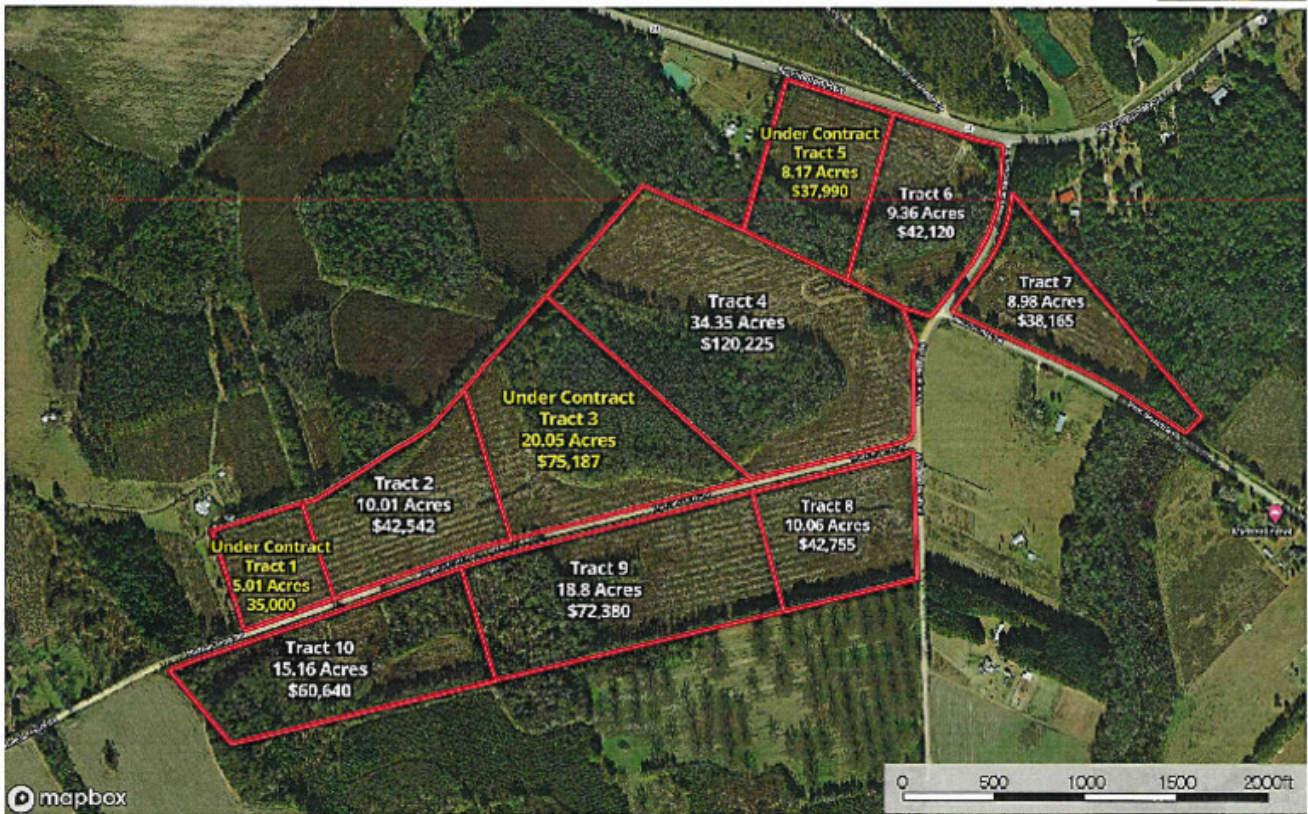


Aerial Map - Tracts 1-10

Runs Branch Tract 10

Published on Plantation Properties & Land Investments, LLC (<https://landanddrivers.com>)

Runs Branch Tracts 1-10
Screven County, Georgia, 138.85 AC +/-



mapbox

© 2023

Jason Williams
P: 812-294-LAND(5200) or 1-800-007-LAND (163-6220) | info@landanddrivers.com | [LandandDrivers.com](https://landanddrivers.com)

M
THE INFORMATION ON THIS WEBSITE IS UNOFFICIAL AND NOT FOR OFFICIAL USE.
PROPERTY DATA IS FOR INFORMATIONAL PURPOSES ONLY AND IS NOT A CONTRACT.
© 2023 PLANTATION PROPERTIES & LAND INVESTMENTS, LLC

Source URL: <https://landanddrivers.com/property/runs-branch-tract-10>