



Watson Road Farm

Exceptional Recreation and Timber Investment property; 226± acres located on Watson Rd in Candler County, GA., near I-16. This well-kept property features 170± acres of mature pine timber, a newly rebuilt and stocked pond at the front of the property with great house/cabin sites and available power and broadband service and a small wet weather pond located at the back that would be great for duck hunting. Two entrances lead you to an excellent interior road system allowing easy access to the entire property! This is a nice tract with ample opportunity to enjoy the outdoors (plenty of deer and other wildlife) and a good land investment. Located near small, quaint town of Metter, only 20 minutes from Statesboro, GA, 1 hour from Savannah, 2 hours from Macon, 3-4 hours from Atlanta area, and less than 3 hours from Jacksonville. Call today to schedule a tour! 912.764.LAND(5263)



Price: \$748,500

Property Type: Land

Status: Sold

Street/Address: Watson Rd.

City: Metter

State: Georgia

Zip code: 30439

County: candler

Acreage: 226

Per Acre Price: \$3,300.00

Phone Number: 912.764.LAND(5263)

Email: info@LandandRivers.com

Google Maps link: [View Larger Map](#)

Watson Road Farm

Published on Plantation Properties & Land Investments, LLC (<https://landandrivers.com>)



Aerial Map

Watson Road Farm

Published on Plantation Properties & Land Investments, LLC (<https://landandrivers.com>)

226+/- acres on Watson Rd.
Candler County, Georgia, 226.82 AC +/-



Esri

Jason Williams
P: 912-754-LAND (5263) or 1-800-GOT-LAND (438-5263) | info@landandrivers.com | [LandAndRivers.com](https://landandrivers.com)

M Esri, the Esri logo, the Esri globe logo, and the Esri name are either registered trademarks or trademarks of Esri in the United States and/or other countries. All other marks contained herein are the property of their respective owners.

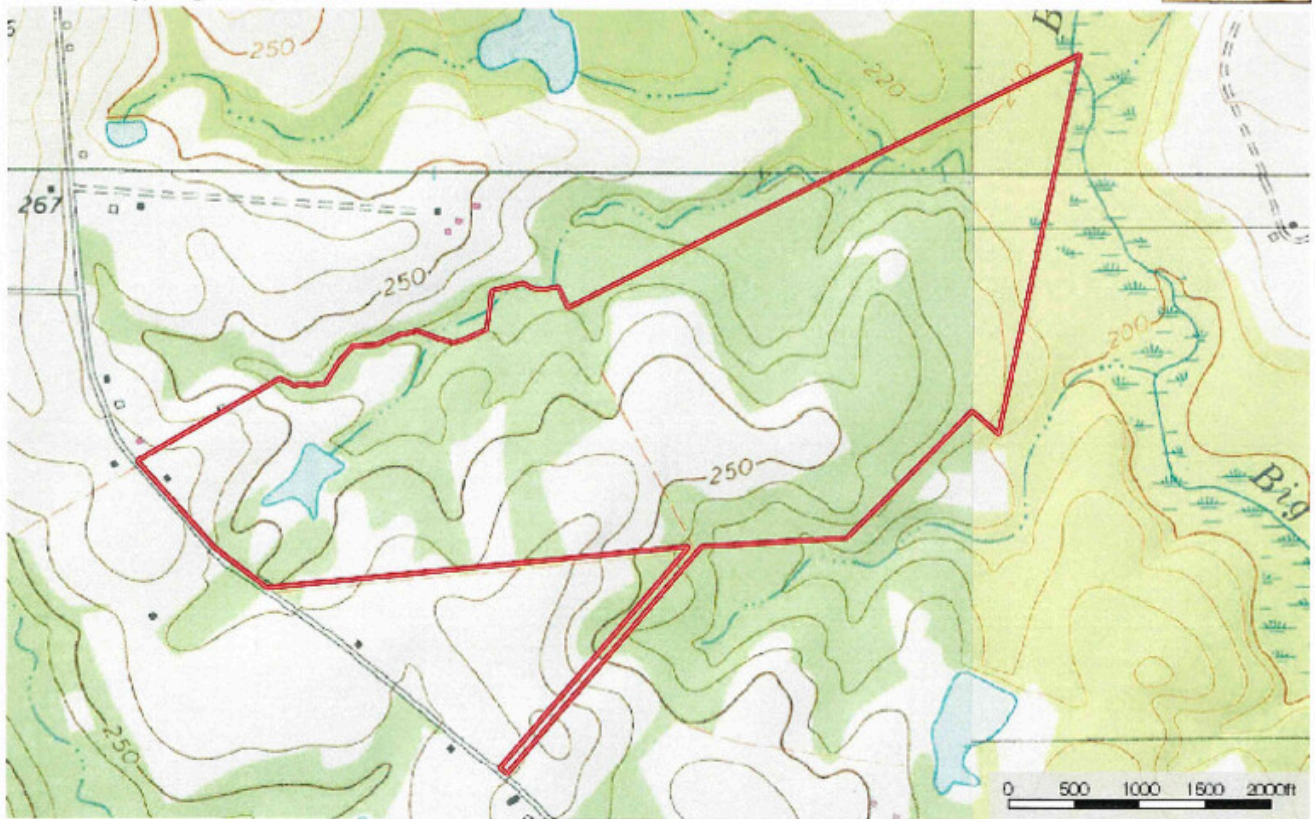
Topo Map

Watson Road Farm

Published on Plantation Properties & Land Investments, LLC (<https://landanddrivers.com>)

226+/- acres on Watson Rd.
Candler County, Georgia, 226.82 AC +/-

PLANTATION PROPERTIES
LAND INVESTMENTS, LLC



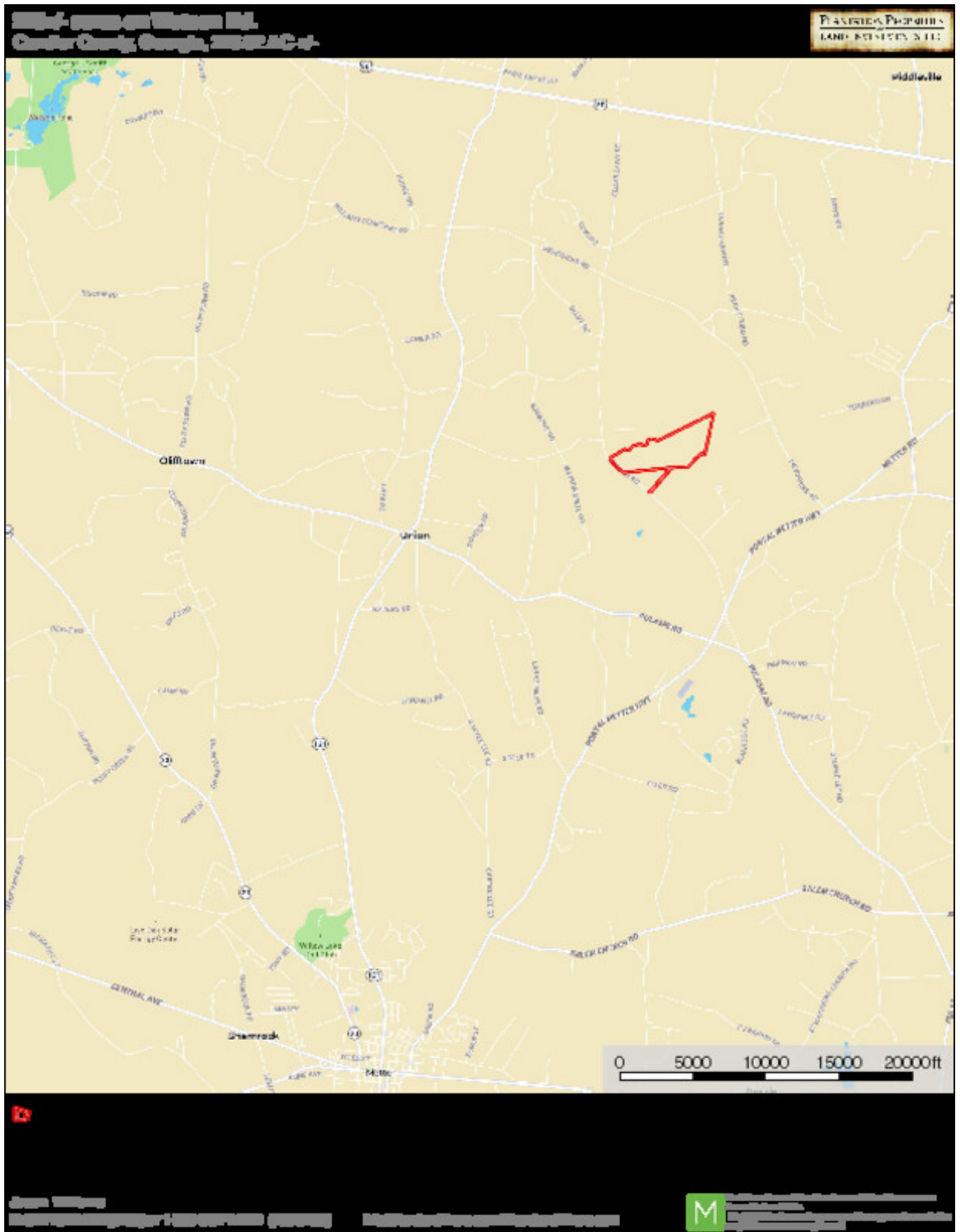
Jason Williams
P: 912.754.1740 | 912.754.1740 | 912.754.1740 | info@landanddrivers.com | London@landanddrivers.com

M We strive to provide the best service possible. If you have any questions, please contact us at info@landanddrivers.com.

Location Map

Watson Road Farm

Published on Plantation Properties & Land Investments, LLC (<https://landanddrivers.com>)



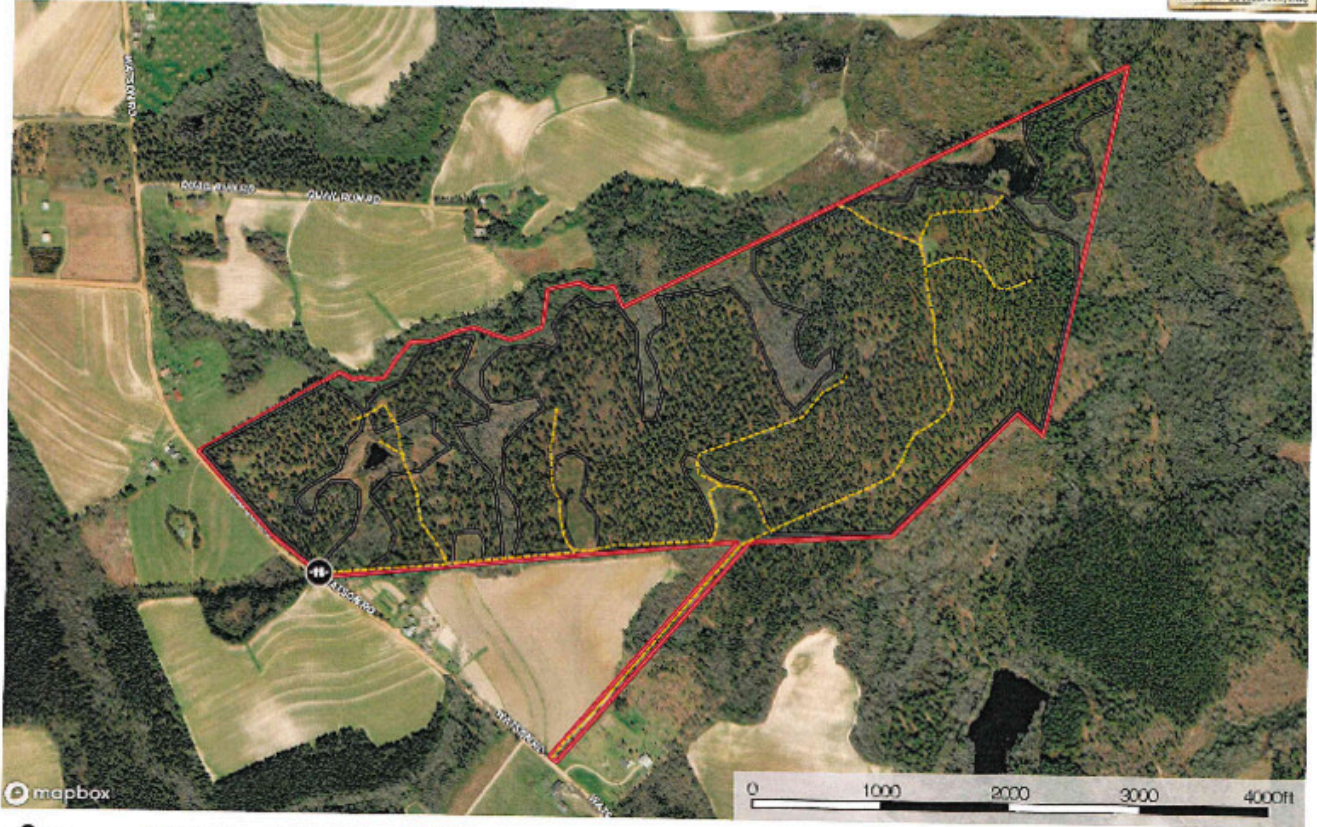
Detailed Aerial

Watson Road Farm

Published on Plantation Properties & Land Investments, LLC (<https://landandrivers.com>)

226+/- acres on Watson Rd. - Detailed Aerial
Candler County, Georgia, 226.82 AC +/-

PLANTATION PROPERTIES
LAND INVESTMENTS, LLC



Jason Williams
PH: 12-784-LAND(5232) or 1-823-GOT-LAND (169-5263) | info@landandrivers.com | LandandRivers.com

M The information on this page is for informational purposes only. It is not intended to be used as a substitute for professional advice. Please consult your attorney for more information.

Source URL: <https://landandrivers.com/property/watson-road-farm>