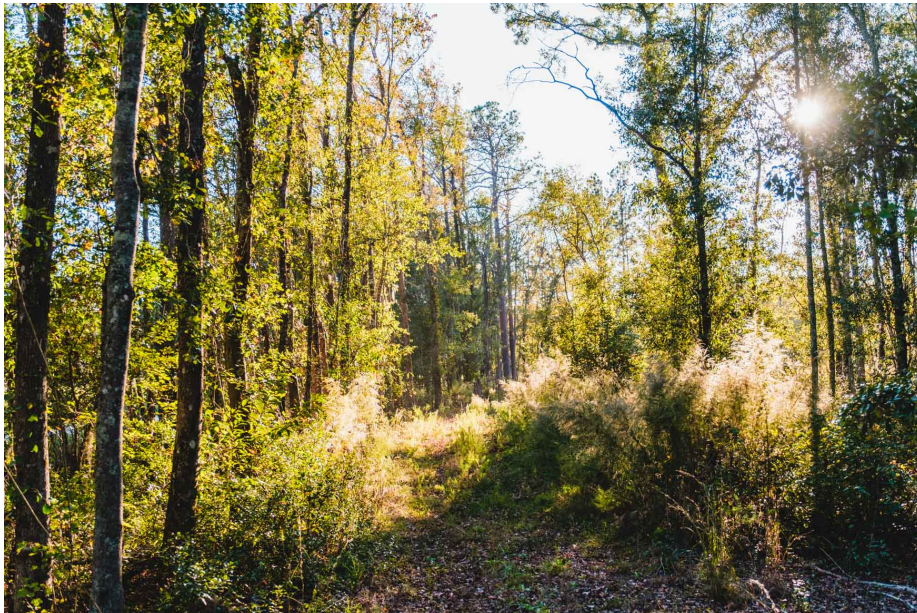




Coursey Tract A

61+/- acres of land great for hunting and recreation. The timber was harvested in August 2020. The property is conveniently located only 2 miles off of I-16 and only 30 miles from Savannah and Statesboro. More acreage is available. Call today for more information (912) 764-LAND (5263)



Price: \$122,000

Property Type: Land

Status: Sold

Street/Address: John Coursey Rd

City: Ellabell

State: Georgia

Zip code: 31308

County: bulloch

Acreage: 61

Per Acre Price: \$2,000.00

Phone Number: 912.764.LAND(5263)

Email: info@LandandRivers.com

Google Maps link: [View Larger Map](#)

Coursey Tract A

Published on Plantation Properties & Land Investments, LLC (<https://landanddrivers.com>)



Location Map



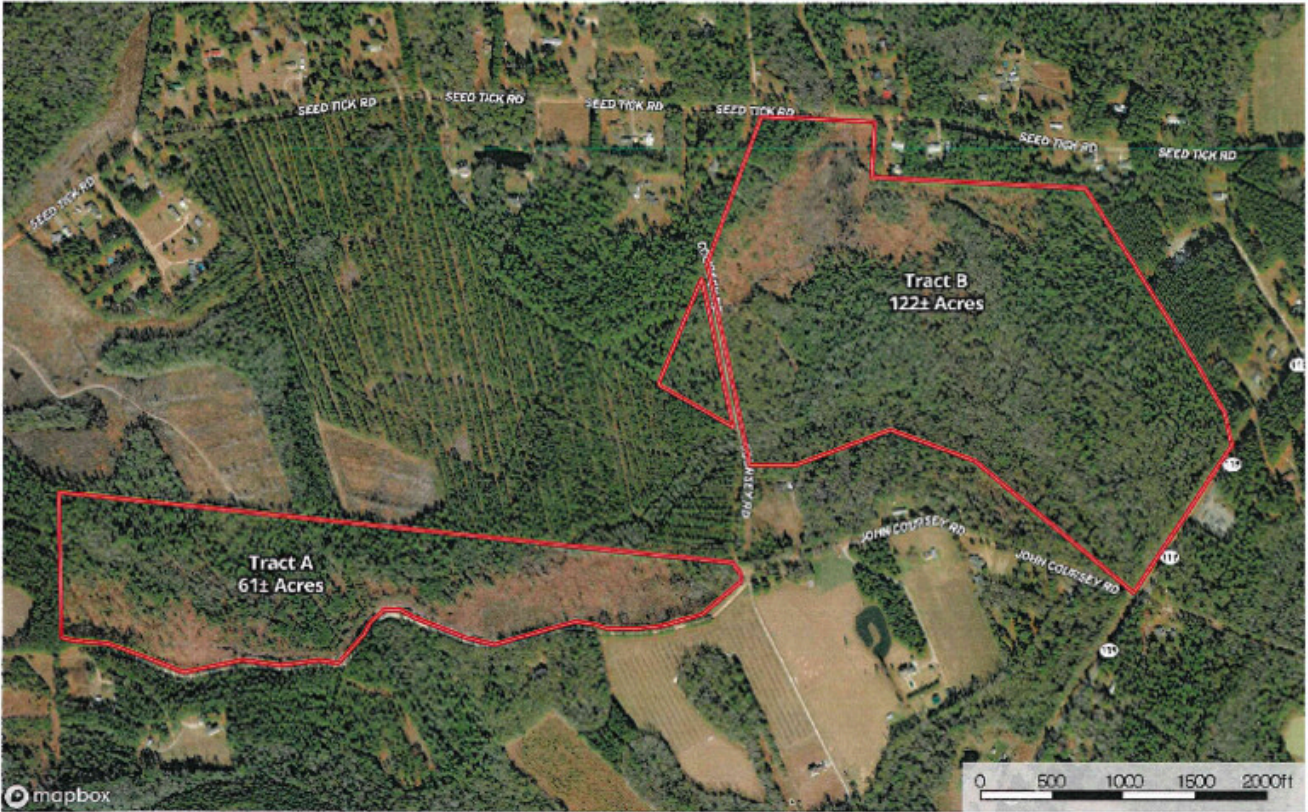
Coursey Tract A

Published on Plantation Properties & Land Investments, LLC (<https://landandrivers.com>)

Aerial

John Coursey Rd. - Tracts A & B
Bulloch County, Georgia, AC +/-

PLANTATION PROPERTIES
LAND INVESTMENTS, LLC



Kandoo

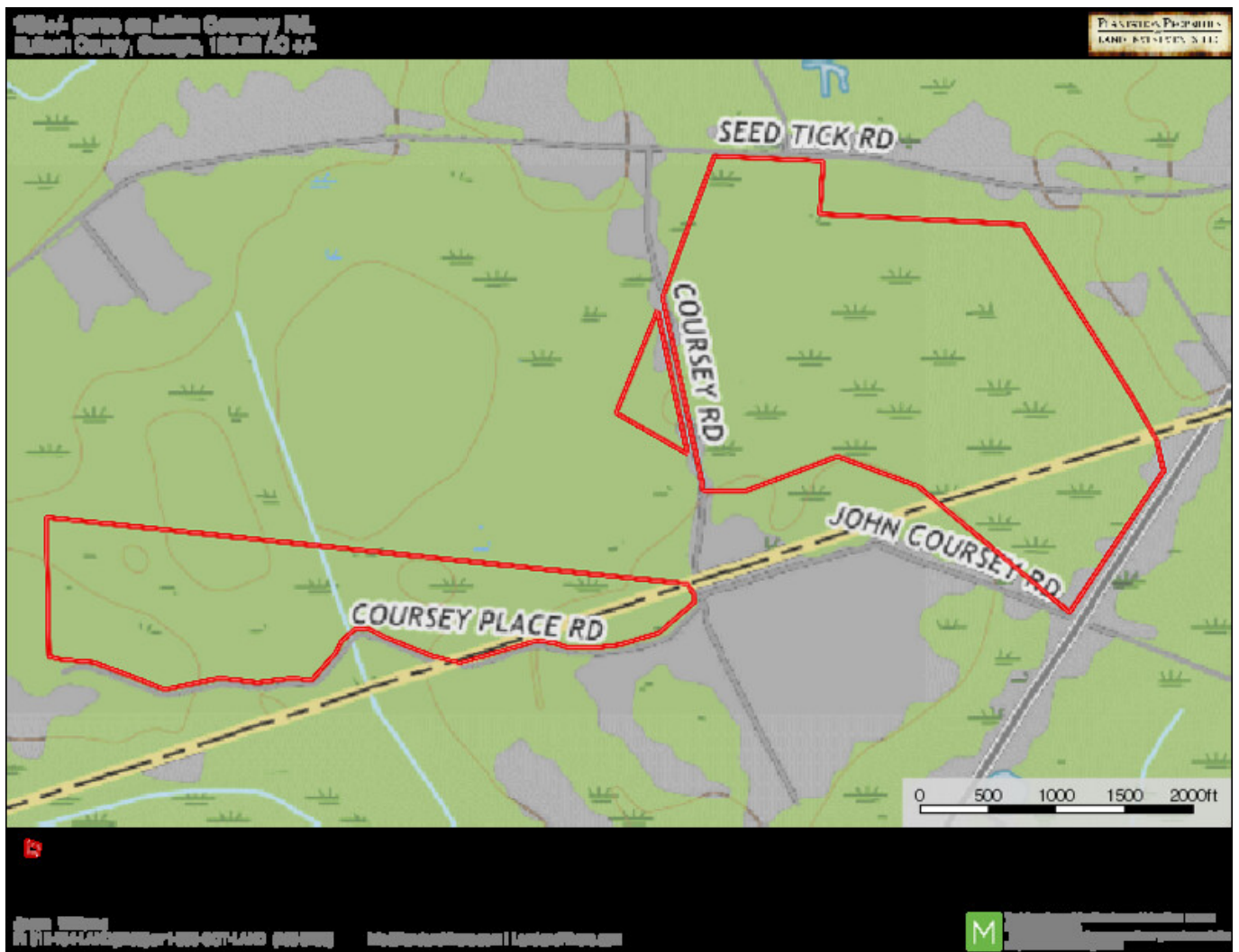
Jason Williams
PH: 17-764-LAND (6283) or 1-800-GOT-LAND (438-5263) | info@landandrivers.com | landandrivers.com

M We are not a real estate agent. We are a land investment company. We help you find the best land investment opportunities in the Southeastern United States. We are not a real estate agent. We are a land investment company. We help you find the best land investment opportunities in the Southeastern United States.

Topo Map

Coursey Tract A

Published on Plantation Properties & Land Investments, LLC (<https://landanddrivers.com>)



Source URL: <https://landanddrivers.com/property/coursey-tract-0>