

Coursey Tract B

Published on Plantation Properties & Land Investments, LLC (<https://landandrivers.com>)



Coursey Tract B

PRICE REDUCED!!! 123± acres of land great for hunting and recreation. This property was clear cut approximately 1.5-2 years ago and was not replanted. Road frontage on John Coursey Rd., Seed Tick Rd. & Hwy 119. Conveniently located just 2 miles off of I-16 and only 30 miles from Savannah and Statesboro. Call today for more information (912) 764-LAND (5263)



Price: \$221,400

Property Type: Land

Status: Sold

Street/Address: John Coursey Rd

City: Ellabell

State: Georgia

Zip code: 31308

County: bulloch

Acreage: 123

Per Acre Price: \$1,800.00

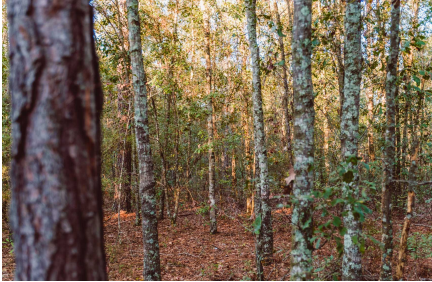
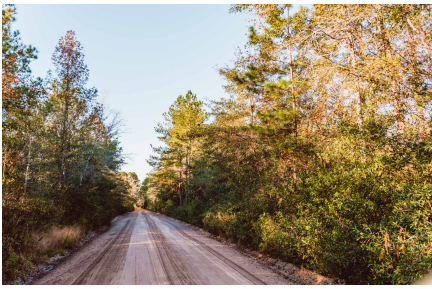
Phone Number: 912.764.LAND(5263)

Email: info@LandandRivers.com

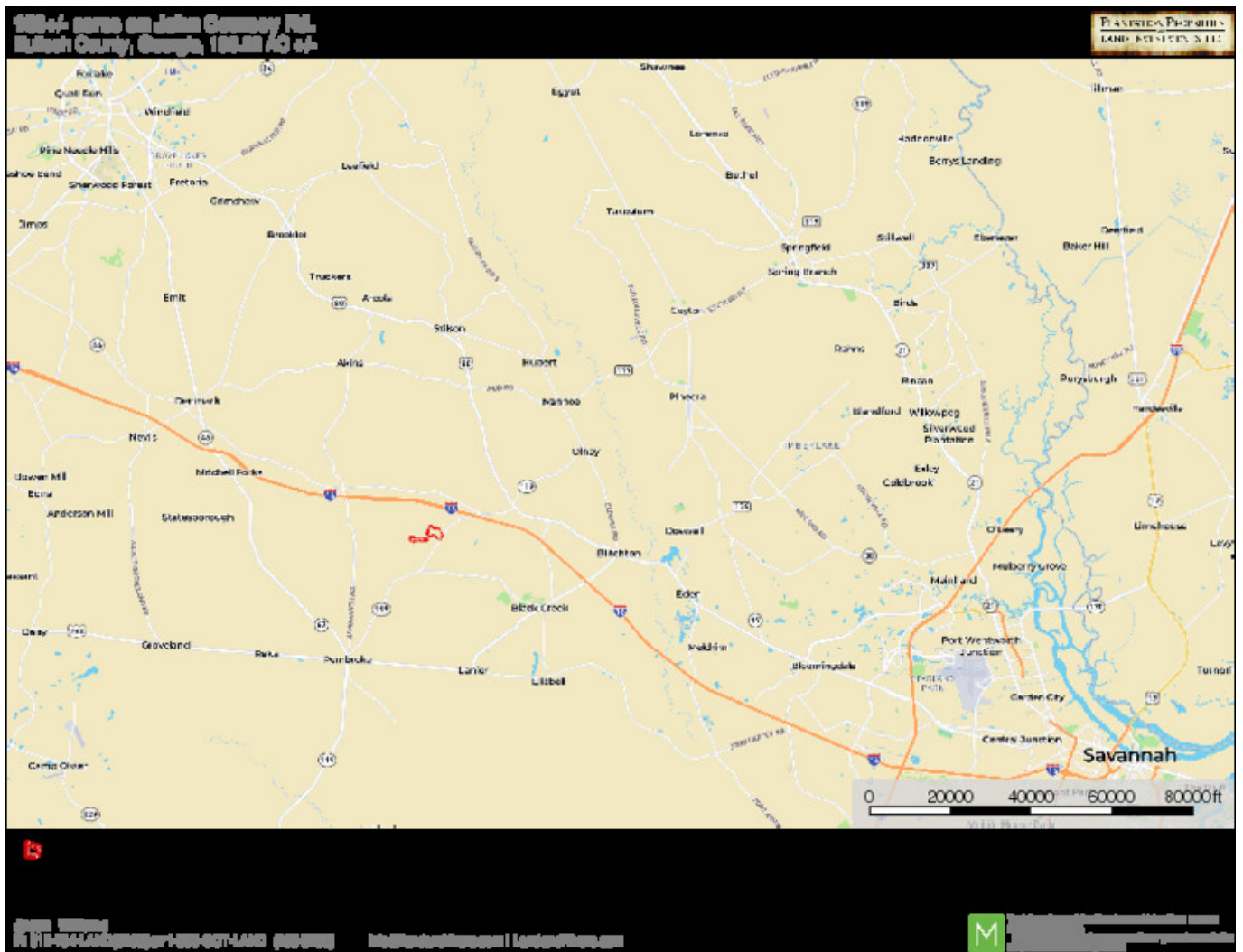
Google Maps link: [View Larger Map](#)

Coursey Tract B

Published on Plantation Properties & Land Investments, LLC (<https://landanddrivers.com>)



Location Map



Coursey Tract B

Published on Plantation Properties & Land Investments, LLC (<https://landandrivers.com>)

Aerial Map

123+/- acres John Coursey Rd. & Seed Tick Rd.
Bulloch County, Georgia. AC +/-

PLANTATION PROPERTIES
LAND INVESTMENTS, LLC



Jason Williams
P: 915-824-1AND(5263) or 1-800-303-1AND (368-4263)

info@landandrivers.com

M The information provided herein was obtained from publicly available sources and is not intended to constitute an offer of securities or other financial products. Please consult your broker or financial advisor for more information.

Coursey Tract B

Published on Plantation Properties & Land Investments, LLC (<https://landanddrivers.com>)

Topo Map



Source URL: <https://landanddrivers.com/property/coursey-tract-b>