



Register Way Farm

Beautiful Bulloch County Farm!! This 58± acres of land features 25± acres cultivated land, 31± acres with a mixture of planted pines and hardwood, a 30x40 metal storage building with lean to and paved road frontage on Old Register Way. Bring the ATVs and enjoy the extensive well-maintained road system that allows access to all areas of the property. There is an amazing array of wildlife including deer, turkey and numerous other small game. This is a great tract with ample opportunity to enjoy the outdoors or obtain a good land investment. A perfect multi-use property and a great investment opportunity for any buyer. Make this farm your new home site, weekend retreat or venture property. Enjoy farming, hunting, ATV riding, camping and more all on your own land. Conveniently located just minutes from Statesboro and I-16, and just a 45 minutes from Savannah. Call Jason Williams today to schedule a tour (912)764-LAND (5263)



Price: \$399,000

Property Type: Land

Status: Sold

Street/Address: 1891 Old Register Way

City: Statesboro

State: Georgia

Zip code: 30458

County: bulloch

Acreage: 58

Per Acre Price: \$6,898.00

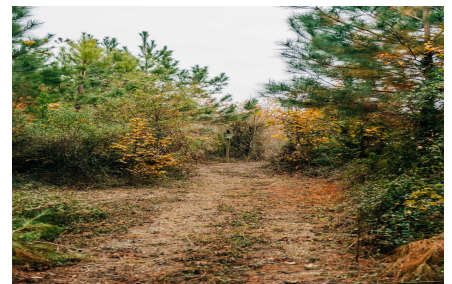
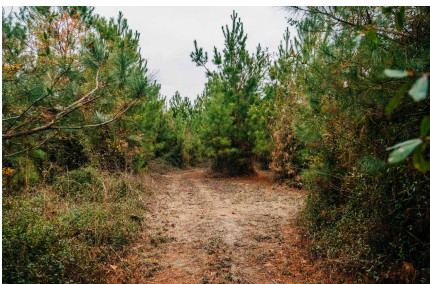
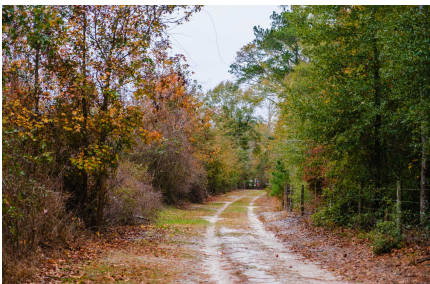
Phone Number: 912.764.LAND(5263)

Email: info@LandandRivers.com

Google Maps link: [View Larger Map](#)

Register Way Farm

Published on Plantation Properties & Land Investments, LLC (<https://landanddrivers.com>)



Register Way Farm

Published on Plantation Properties & Land Investments, LLC (<https://landandrivers.com>)



Aerial Map

Register Way Farm

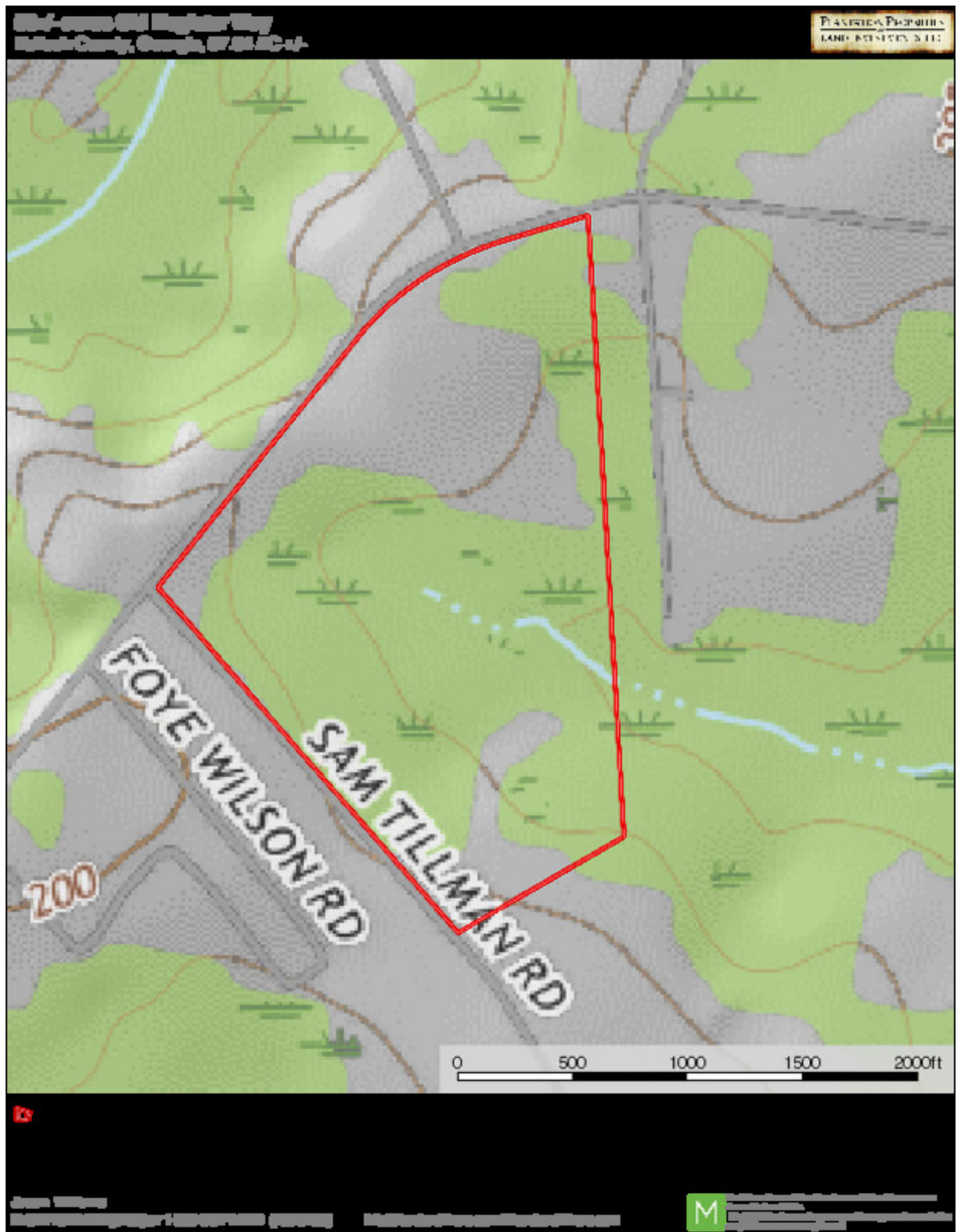
Published on Plantation Properties & Land Investments, LLC (<https://landandrivers.com>)



TOPO Map

Register Way Farm

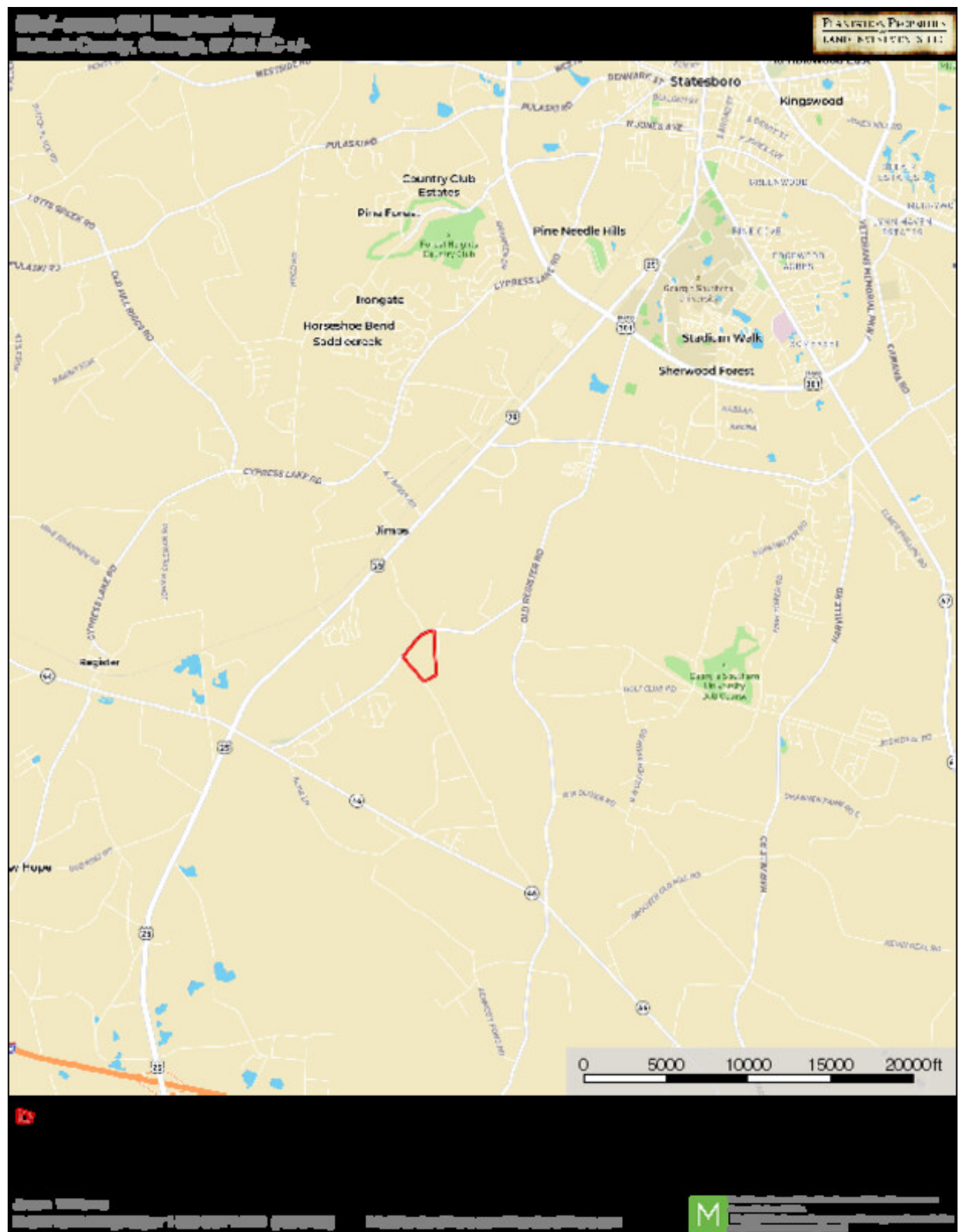
Published on Plantation Properties & Land Investments, LLC (<https://landandrivers.com>)



Location Map

Register Way Farm

Published on Plantation Properties & Land Investments, LLC (<https://landanddrivers.com>)



Source URL: <https://landanddrivers.com/property/register-way-farm>