



Gibbons Tract

The Gibbons Tract is a 360± acre tract located in Jefferson County about 10 minutes outside of Louisville. The property consists of two cultivated fields totaling 55± acres, 55± acres of merchantable pine plantation, 159± acres of pine and hardwood mix, and 77± acres was previously harvested. This place is loaded with deer and turkey signs and is an excellent habitat for wildlife. It would make a great timber investment, recreational tract, homesite, weekend retreat or venture property. A MUST SEE!!! Call Jason Today! 912.764.LAND(5263)



Price: \$850,000

Property Type: Land

Status: Sold

Street/Address: Belmont Rd.

City: Louisville

State: Georgia

Zip code: 30434

County: jefferson

Acreage: 360

Per Acre Price: \$0.00

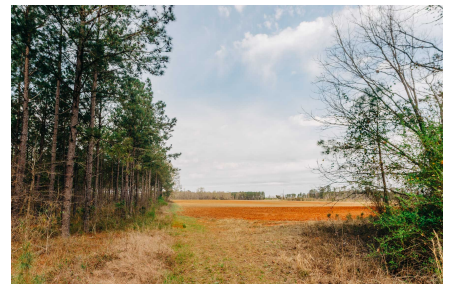
Phone Number: 912.764.LAND(5263)

Email: info@LandandRivers.com

Google Maps link: [View Larger Map](#)

Gibbons Tract

Published on Plantation Properties & Land Investments, LLC (<https://landanddrivers.com>)



Gibbons Tract

Published on Plantation Properties & Land Investments, LLC (<https://landandrivers.com>)



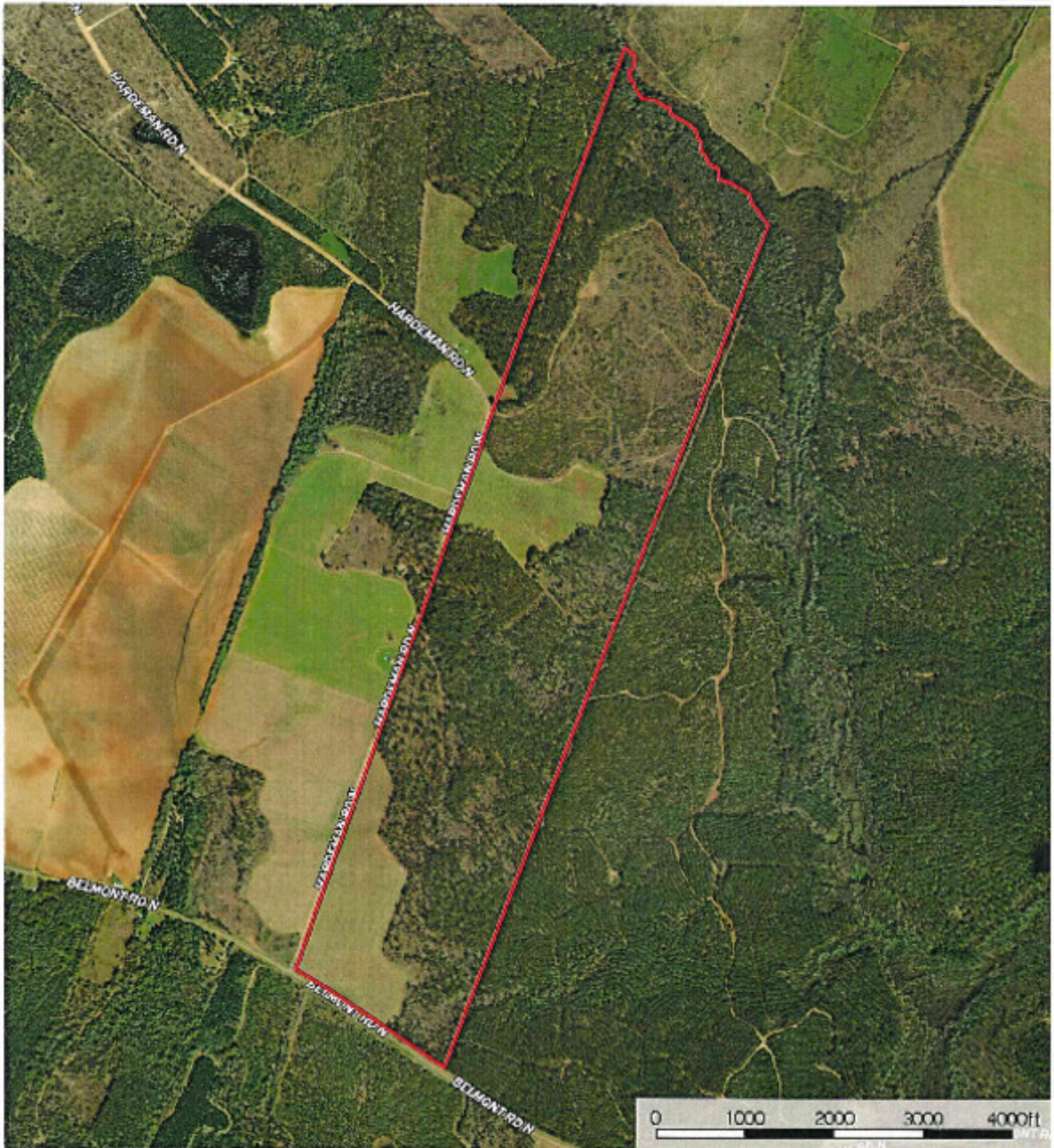
Aerial Map

Gibbons Tract

Published on Plantation Properties & Land Investments, LLC (<https://landanddrivers.com>)

360+/- acres on Belmont Rd.
Jefferson County, Georgia, AC 17

PLANTATION PROPERTIES
LAND INVESTMENTS, LLC



Images

Jayce Williams
PHOTOGRAPHY AND VIDEO | 1-800-901-1-AND | 408-5703

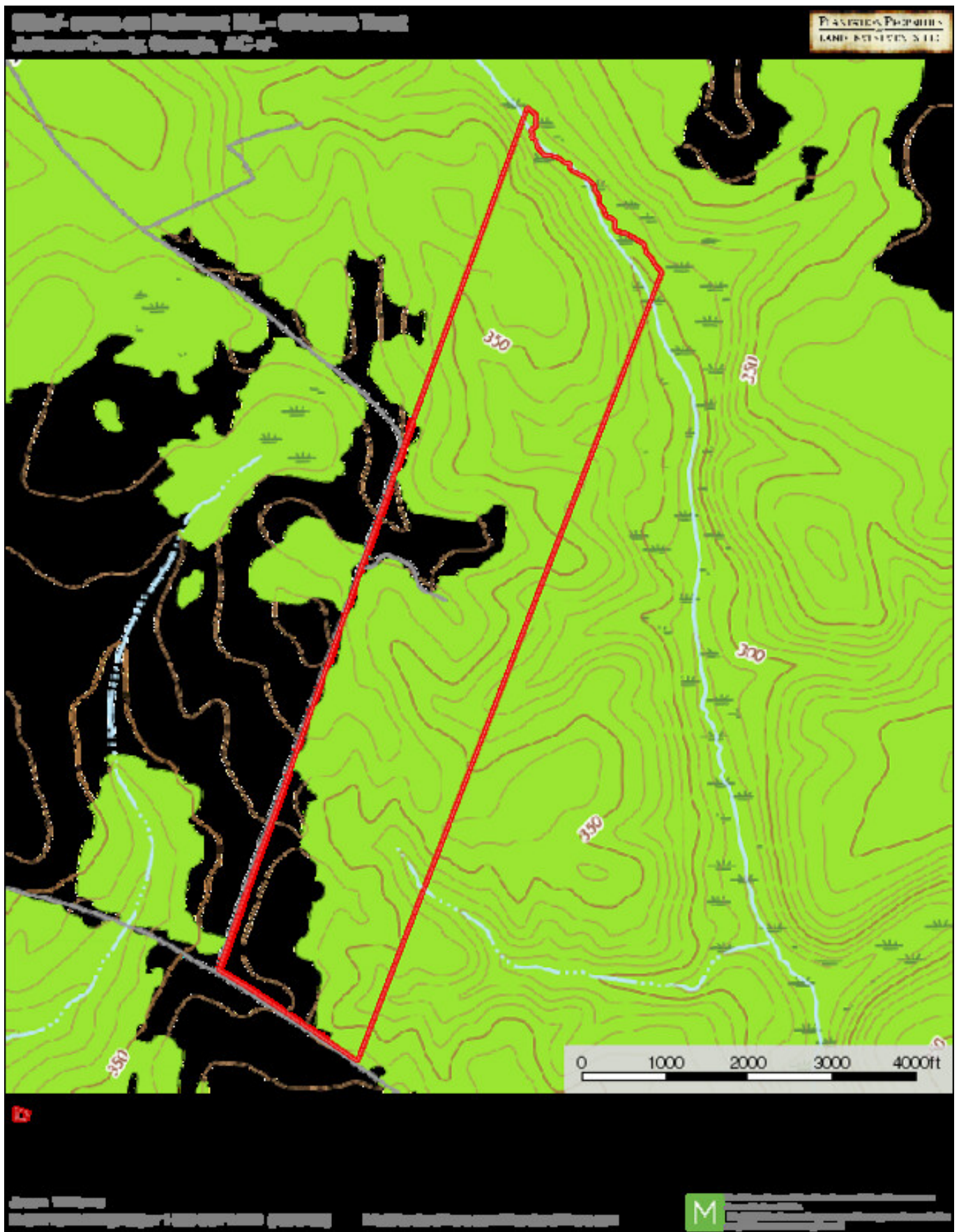
<https://landanddrivers.com> | [LandandDrivers.com](https://landanddrivers.com)

M is a professional service and does not constitute an offer of insurance or any other financial product. For more information, please contact your insurance agent.

Topo Map

Gibbons Tract

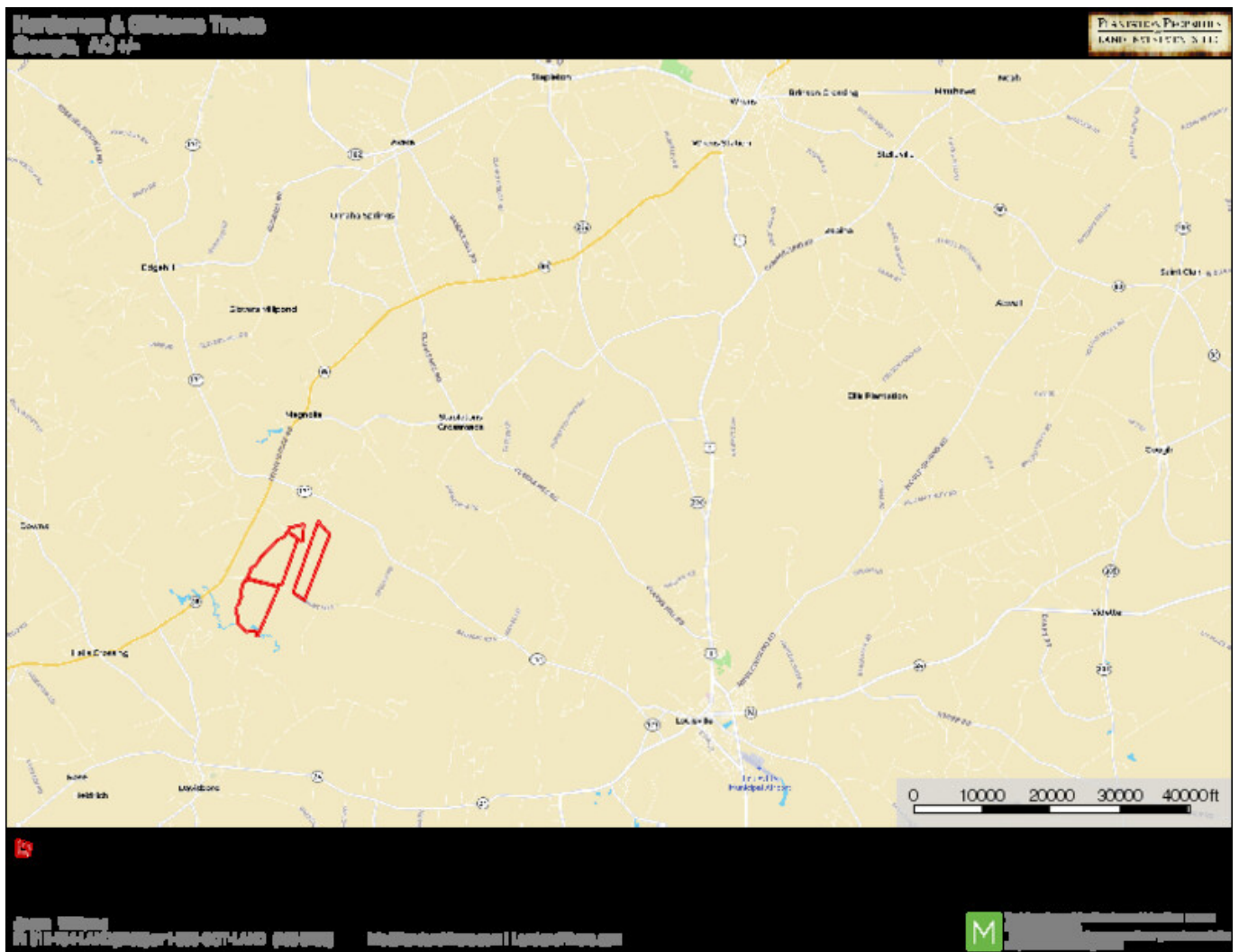
Published on Plantation Properties & Land Investments, LLC (<https://landandrivers.com>)



Location Map

Gibbons Tract

Published on Plantation Properties & Land Investments, LLC (<https://landanddrivers.com>)



Source URL: <https://landanddrivers.com/property/gibbons-tract>