



Greenhouse Homeplace

PRICE REDUCED!!! Greenhouse Homeplace is a 47± acre tract right outside of Metter on HWY 46. This property would make for a great future home site or weekend getaway with access from HWY 46 and Greenhouse Rd. The tract is made up of mostly volunteer pine trees with some hardwoods along the northwest edge of the property. Only an hour drive to Savannah and 20 minutes from Statesboro. Seller will divided into two separate tracts. Call today to schedule a viewing 912.764.5263(LAND)



Price: \$299,000

Property Type: Land

Status: Sold

Street/Address: E HWY 46

City: Metter

State: Georgia

Zip code: 30439

County: candler

Acreage: 47

Per Acre Price: \$6,300.00

Phone Number: 912.764.LAND(5263)

Email: info@LandandRivers.com

Google Maps link: [View Larger Map](#)

Greenhouse Homeplace

Published on Plantation Properties & Land Investments, LLC (<https://landanddrivers.com>)



Aerial Map

47.5+/- acres on E. Hwy 48
Carroll County, Georgia, 47.5 AC +/-

PLANTATION PROPERTIES
LAND INVESTMENTS LLC



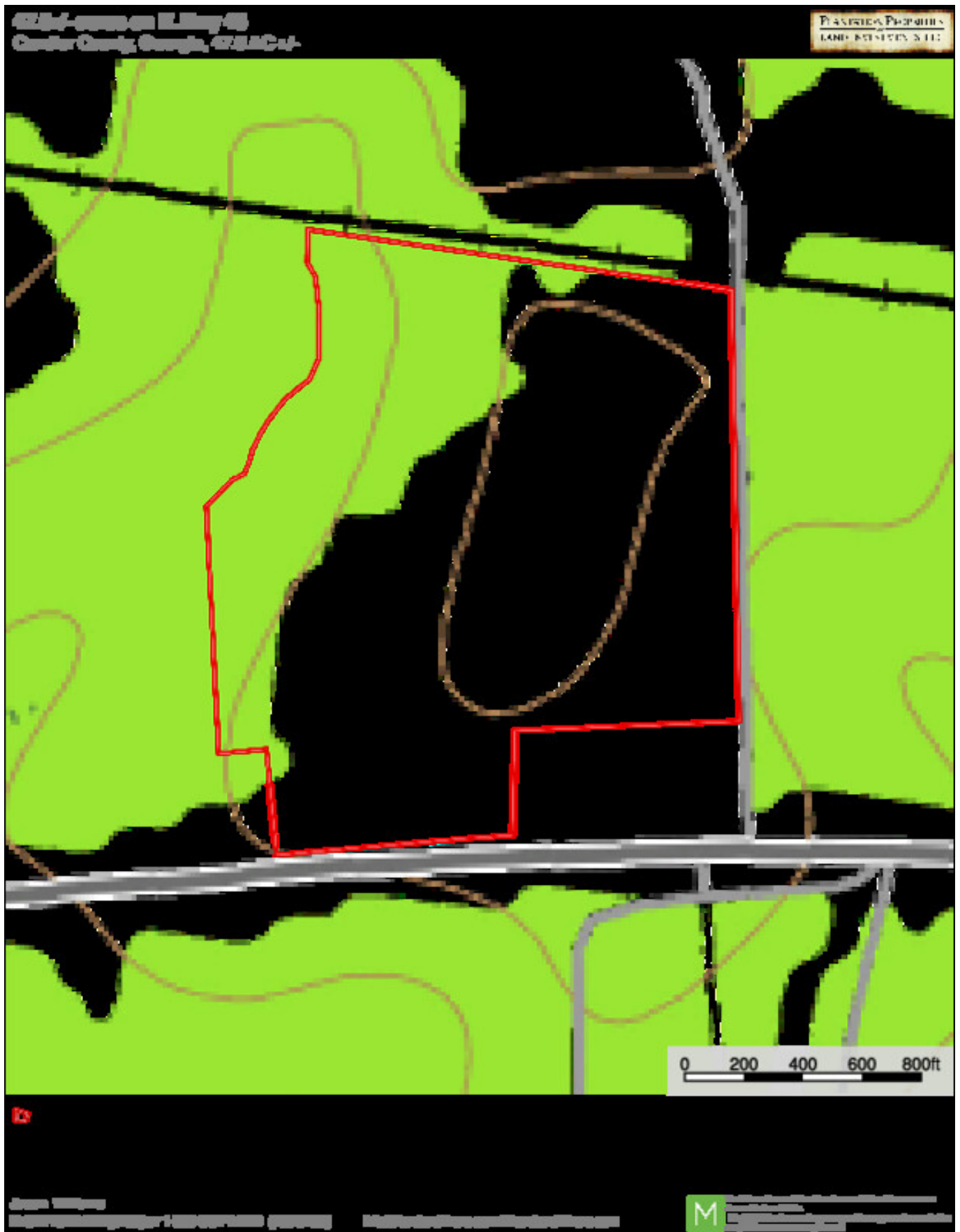
Eximby

Jason Williams
P: 912-794-1400 (TWS); or 1-833-COT-LAND (368-5265)

jwilliams@landanddrivers.com | [LandandDrivers.com](https://landanddrivers.com)

M Real estate is a complex business. We are here to help you navigate the process. Our experienced professionals are ready to assist you every step of the way.

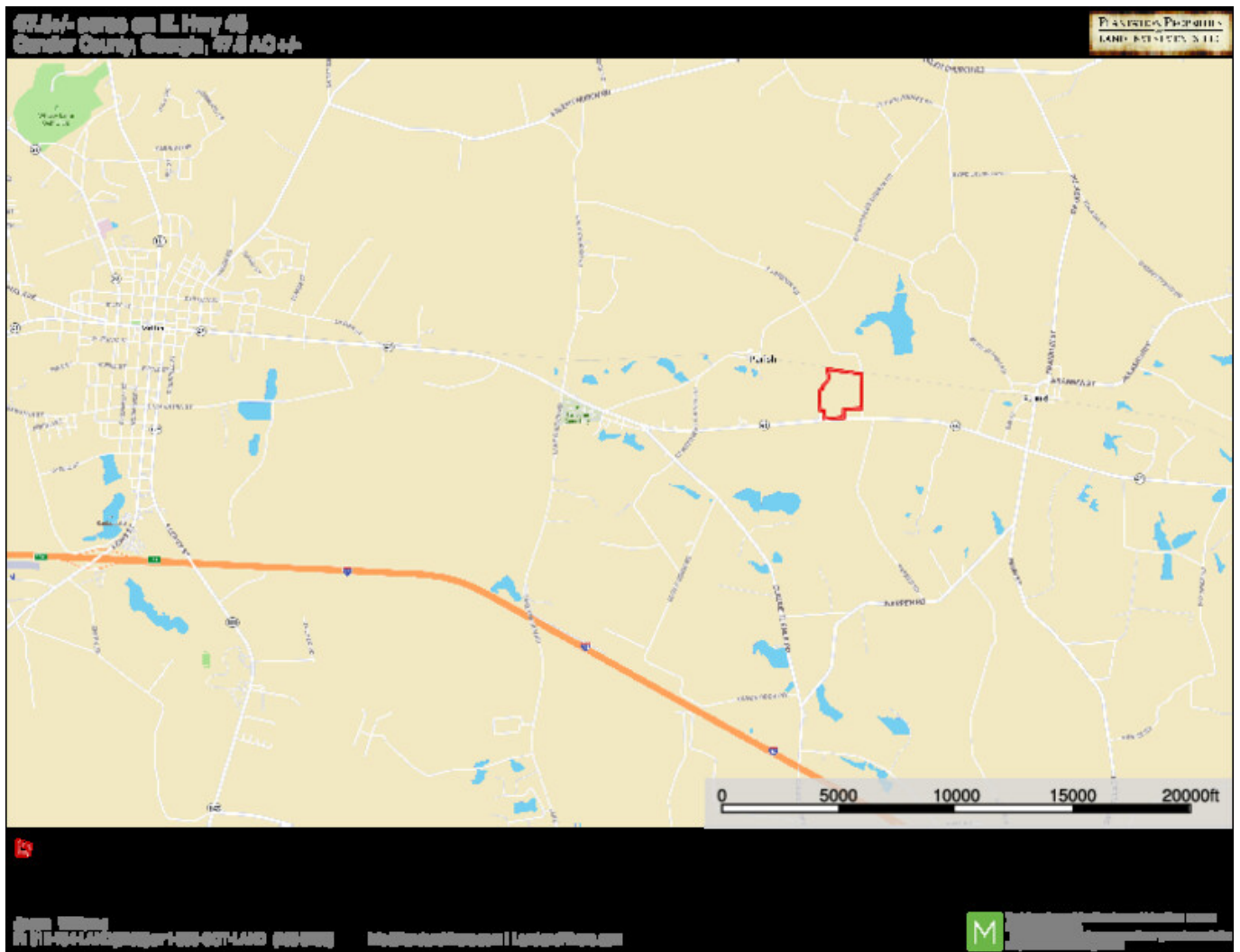
Topo Map



Greenhouse Homeplace

Published on Plantation Properties & Land Investments, LLC (<https://landandrivers.com>)

Location Map



Source URL: <https://landandrivers.com/property/greenhouse-homeplace>