



Chuli Road

Chuli Road is 7.96± acres located in Spalding County. The property has over 450 feet of frontage along a county maintained dirt/gravel road. It is timbered in a varied mixture of mature hardwoods and has gentle slope to the back. The property is oriented with a great southern aspect that will make passive solar system ideal. If solar is not in a buyer's plan, power is already available along the road frontage. A great swimming hole is located just down the dirt road along the Towaliga River. This property will make a great place for a home in the country or a rural get away. It is located convenient to I-75 and is only approximately 20 minutes to Griffin and less than an hour to Atlanta. A soil study was done several years ago to determine suitability for a septic system. Give us a call to see a great property in a beautiful setting.



Price: \$49,000

Property Type: Land

Status: Sold

Street/Address: 355 Chuli Road

City: Locust Grove

State: Georgia

Zip code: 30248

County: spalding

Acreage: 8

Per Acre Price: \$0.00

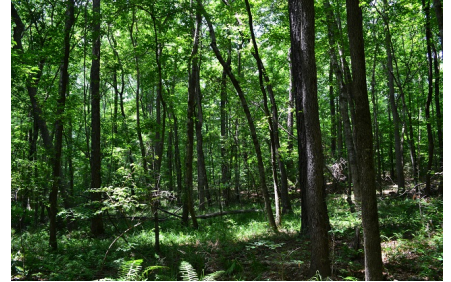
Phone Number: (478) 279-2148

Email: michael@landanddrivers.com

Google Maps link: [View Larger Map](#)

Chuli Road

Published on Plantation Properties & Land Investments, LLC (<https://landandrivers.com>)



Aerial Map

Chuli Road

Published on Plantation Properties & Land Investments, LLC (<https://landandrivers.com>)

Chuli Road

Spalding County, Georgia, 7.96 AC +/-



 Boundary

michael wilson
P: (478) 279-2148

michael@landandrivers.com

1207 Merchants Way Suite 101 Statesboro, GA



The information contained herein was obtained from sources deemed to be reliable. MapRight Services makes no warranties or guarantees as to the completeness or accuracy thereof.

Source URL: <https://landandrivers.com/property/chuli-road>