



## Ulcohatchee Creek

Ulcohatchee Creek is 58.75+/- acres located in western Crawford county. This property is the perfect sized recreational tract. It is made up of pine timber on the upland portions and beautiful hardwoods along the Ulcohatchee creek frontage and along the two smaller unnamed streams that cross the property. Ulcohatchee is a major creek in the area. It empties into the Flint river just a few miles from the property. The Flint is only approximately 2.5 miles from the property as the crow flies. That places this property in one of the premier hunting areas in the state. The Flint River basin has long been known for its deer, turkey , and hog hunting opportunities. The majority of the property's frontage along Ulcohatchee is a high bluff that towers over the creek bed below. Approximately half a mile of paved road frontage allows for endless options for access or future division. There are several cleared areas on the property that can be developed as food plots or feeder sites. If you are in the mrket for a recreational property of this size, you owe it to your self to take a look at this one.



**Price:** \$149,813

**Property Type:** Land

**Status:** Sold

**Street/Address:** Olive Grove Church Road`

**City:** Roberta

**State:** Georgia

**Zip code:** 31078

**County:** crawford

**Acreage:** 59

**Per Acre Price:** \$2,550.00

**Phone Number:** (478) 279-2148

**Email:** [michael@landandrivers.com](mailto:michael@landandrivers.com)

**Google Maps link:** [View Larger Map](#)

## Ulcohatchee Creek

Published on Plantation Properties & Land Investments, LLC (<https://landandrivers.com>)

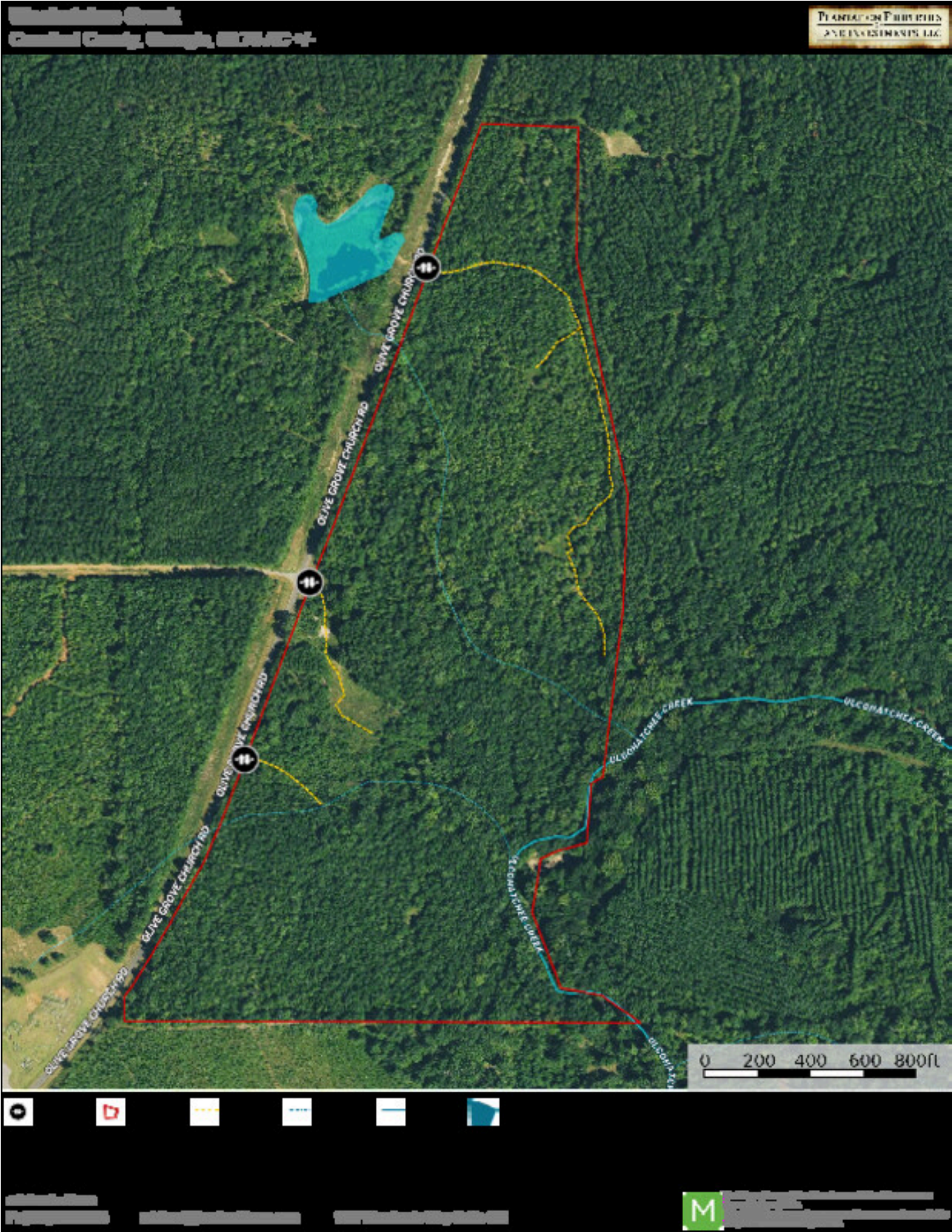
---





Ulcohatchee Creek

Published on Plantation Properties & Land Investments, LLC (<https://landandrivers.com>)





# Ulcohatchee Creek

Published on Plantation Properties & Land Investments, LLC (<https://landandrivers.com>)



# Ulcovatchee Creek

Published on Plantation Properties & Land Investments, LLC (<https://landandrivers.com>)

