

## Friendship Pines - Tract 1

Published on Plantation Properties & Land Investments, LLC (<https://landandrivers.com>)

---



### Friendship Pines - Tract 1

Tract 1 is a 46± acre tract with road frontage on Friendship Rd. The property is made up mainly of young planted pines with some older pines and hardwoods scattered throughout. It would make for an excellent homesite, weekend getaway, or recreational tract. Call us today to schedule a viewing! 912.764.LAND(5263)

\*/

\*/

## Friendship Pines - Tract 1

Published on Plantation Properties & Land Investments, LLC (<https://landandrivers.com>)

---



**Price:** \$131,100

**Property Type:** Land

**Status:** Sold

**Street/Address:** Friendship Road

**City:** Sylvania

**State:** Georgia

**Zip code:** 30467

**County:** screven

**Acreage:** 46

**Per Acre Price:** \$2,850.00

**Phone Number:** 912.764.LAND(5263)

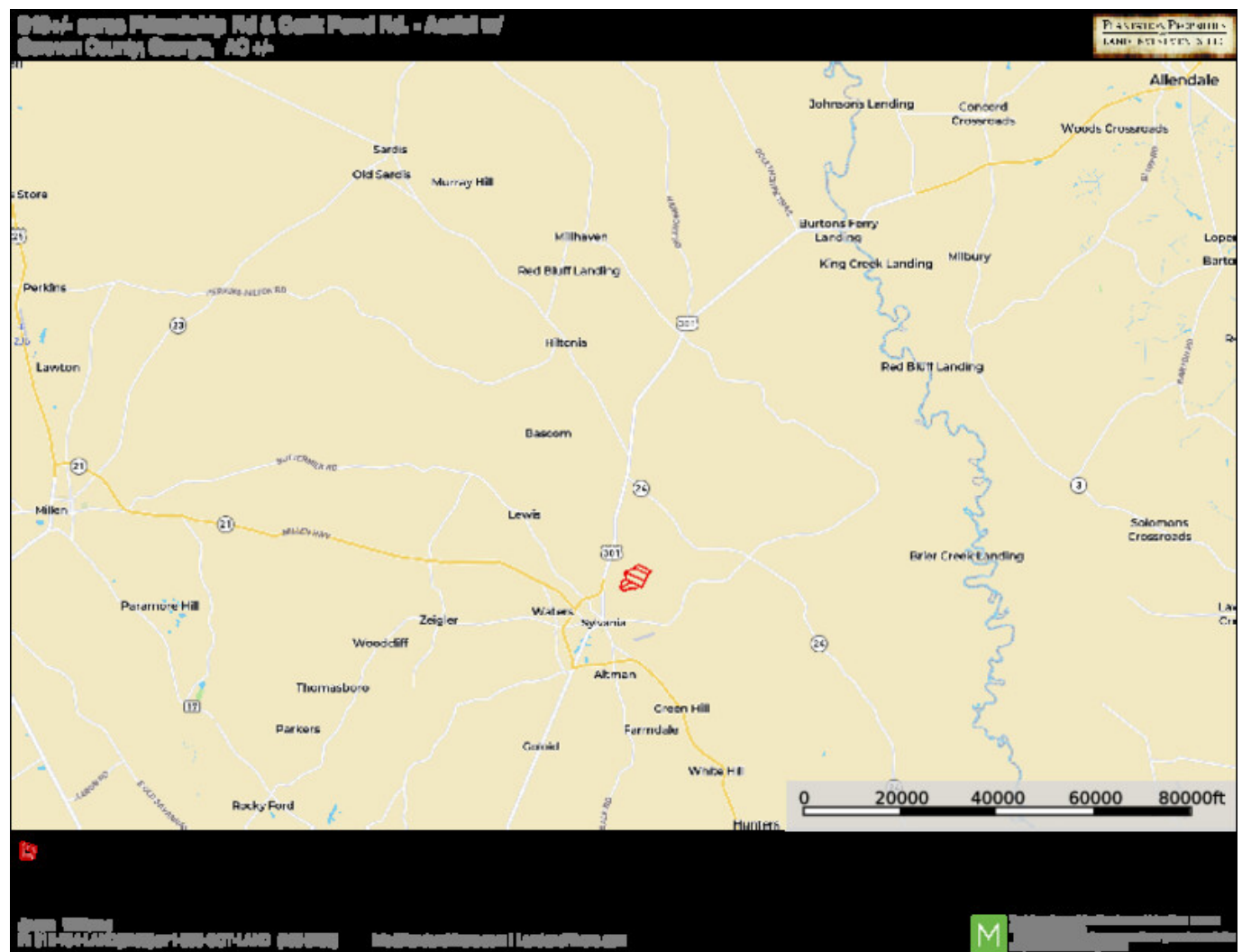
**Email:** [info@LandandRivers.com](mailto:info@LandandRivers.com)

**Google Maps link:** [View Larger Map](#)

## Location Map

# Friendship Pines - Tract 1

Published on Plantation Properties & Land Investments, LLC (<https://landandrivers.com>)



## Topo Map

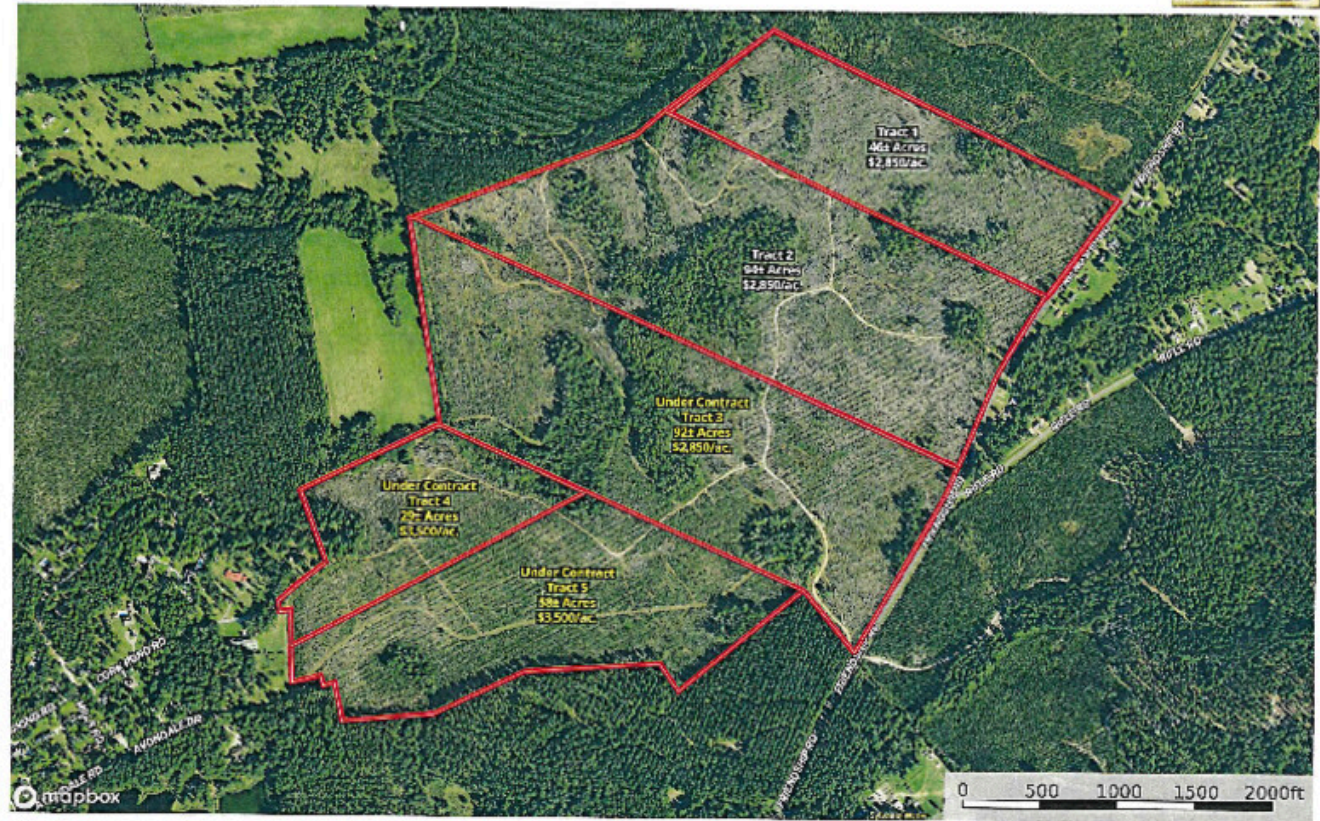




## Friendship Pines - Tract 1

Published on Plantation Properties & Land Investments, LLC (<https://landanddrivers.com>)

319±/- acres Friendship Rd & Cork Pond Rd. - Divided  
Scraper County, Georgia, AC 47-



Jaden Williams  
P. 770-734-LANDISCOVER | 1-800-607-LAND | (606) 325-5511 | [info@landanddrivers.com](mailto:info@landanddrivers.com) | [landanddrivers.com](https://landanddrivers.com)

**M** This is a preliminary map and should not be used for legal purposes. It is intended for informational purposes only. The information is subject to change without notice. © 2023 M. All rights reserved.

Source URL: <https://landanddrivers.com/property/friendship-pines-tract-1>