

Friendship Pines - Tract 3

Published on Plantation Properties & Land Investments, LLC (<https://landandrivers.com>)



Friendship Pines - Tract 3

Tract 3 is a 92± acre tract with road frontage along Friendship Rd. The property is made up of young planted pines and has a good amount of old growth hardwood/ pine mix. This lot has a good road system throughout allowing you to utilize every bit of the property. This tract would make for an ideal hunting retreat or homesite. Call us today to schedule a viewing! 912.764.LAND(5263)

*/



Price: \$262,200

Property Type: Land

Status: Sold

Street/Address: Friendship Rd.

City: Sylvania

State: Georgia

Zip code: 30467

County: screven

Acreage: 92

Per Acre Price: \$2,850.00

Phone Number: 912.764.LAND(5263)

Email: info@LandandRivers.com

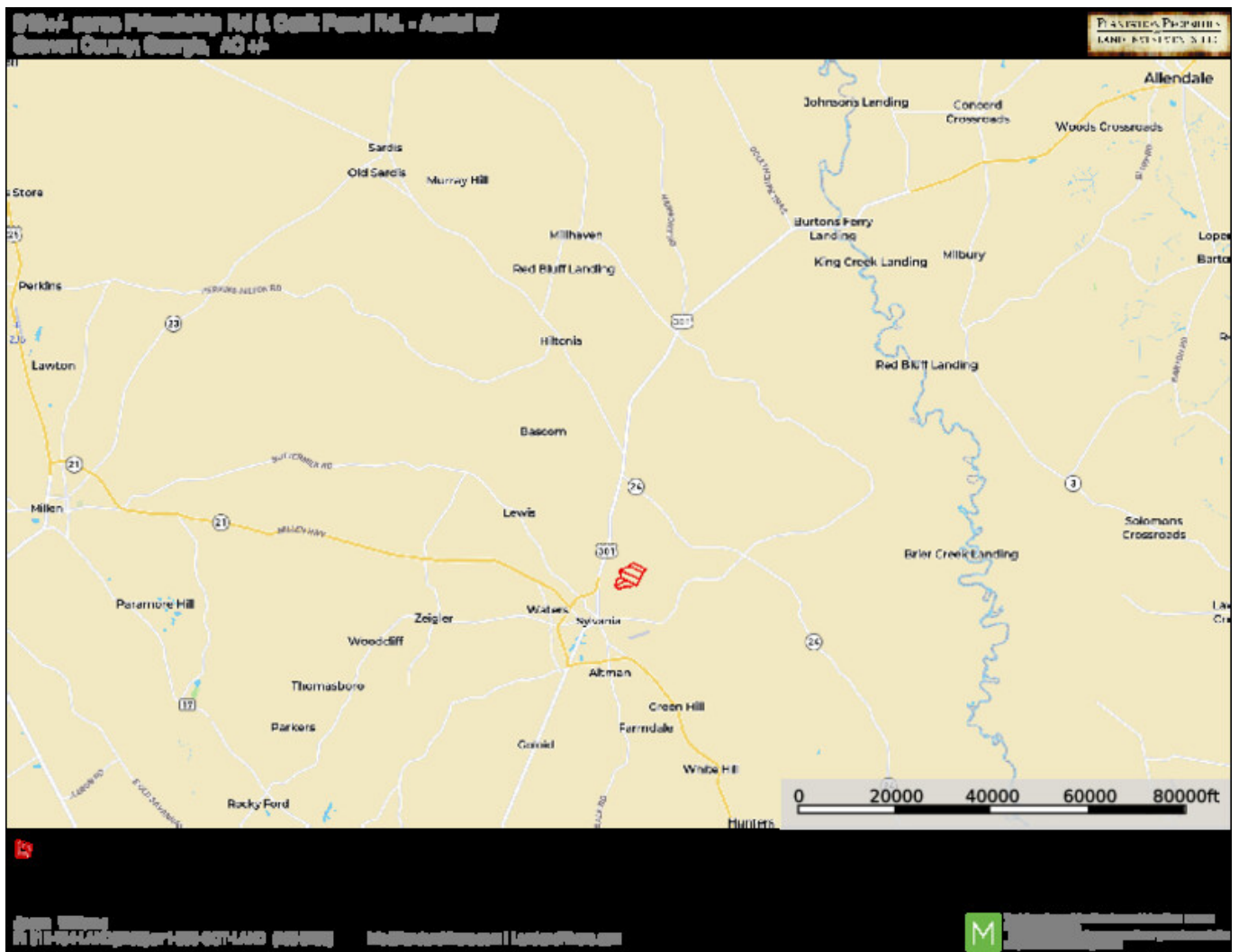
Google Maps link: [View Larger Map](#)

Friendship Pines - Tract 3

Published on Plantation Properties & Land Investments, LLC (<https://landandrivers.com>)



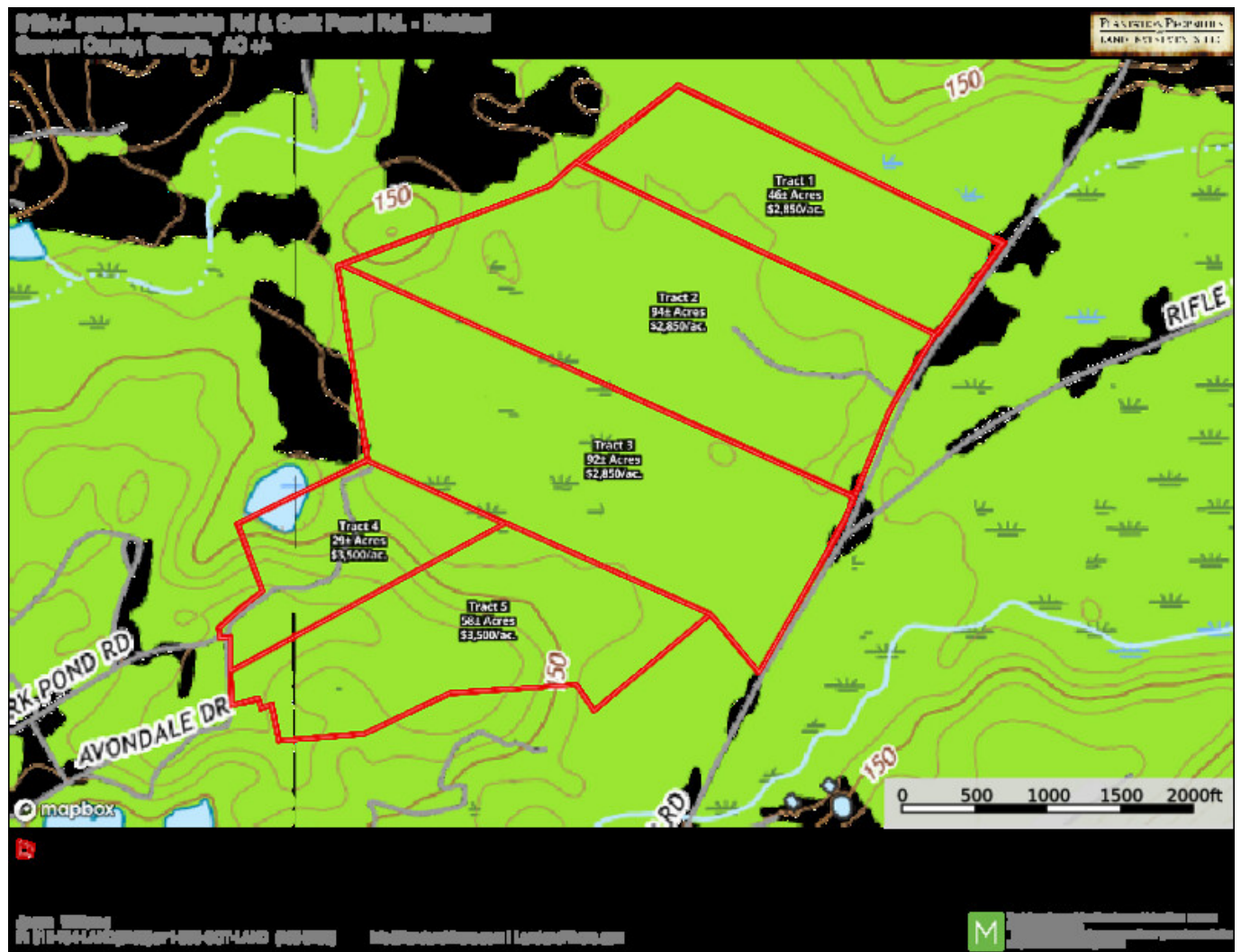
Location Map



Topo Map

Friendship Pines - Tract 3

Published on Plantation Properties & Land Investments, LLC (<https://landanddrivers.com>)

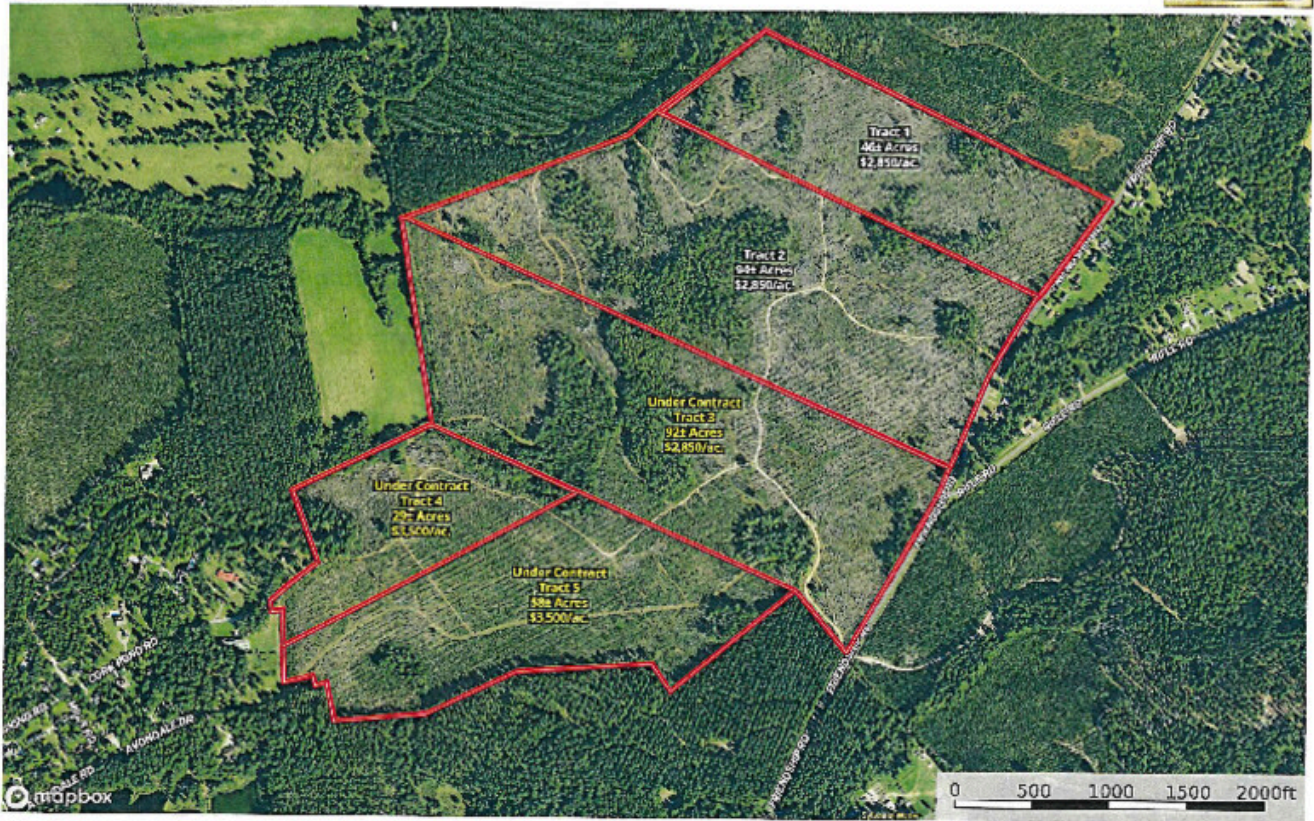


Aerial Map

Friendship Pines - Tract 3

Published on Plantation Properties & Land Investments, LLC (<https://landanddrivers.com>)

319+/- acres Friendship Rd & Cork Pond Rd. - Divided
Scraper County, Georgia, AC 17-



Jason Williams
P: 770-731-LAND (5667) or 1-402-607-4442 (160-5255) | info@landanddrivers.com | landanddrivers.com



Source URL: <https://landanddrivers.com/property/friendship-pines-tract-3>