

Friendship Pines - Tract 4

Published on Plantation Properties & Land Investments, LLC (<https://landandrivers.com>)



Friendship Pines - Tract 4

Tract 4 is a 29± acre tract with access from Cork Pond Rd. The majority of the property is made up of young planted pines with a few patches of hardwood/ pine mix. The tract would make for a great homesite, weekend retreat, or recreational tract. Call us today to schedule a viewing! 912.764.LAND(5263)

*/



Price: \$101,500

Property Type: Land

Status: Sold

Street/Address: Friendship Rd.

City: Sylvania

State: Georgia

Zip code: 30467

County: screven

Acreage: 29

Per Acre Price: \$3,500.00

Phone Number: 912.764.LAND(5263)

Email: info@LandandRivers.com

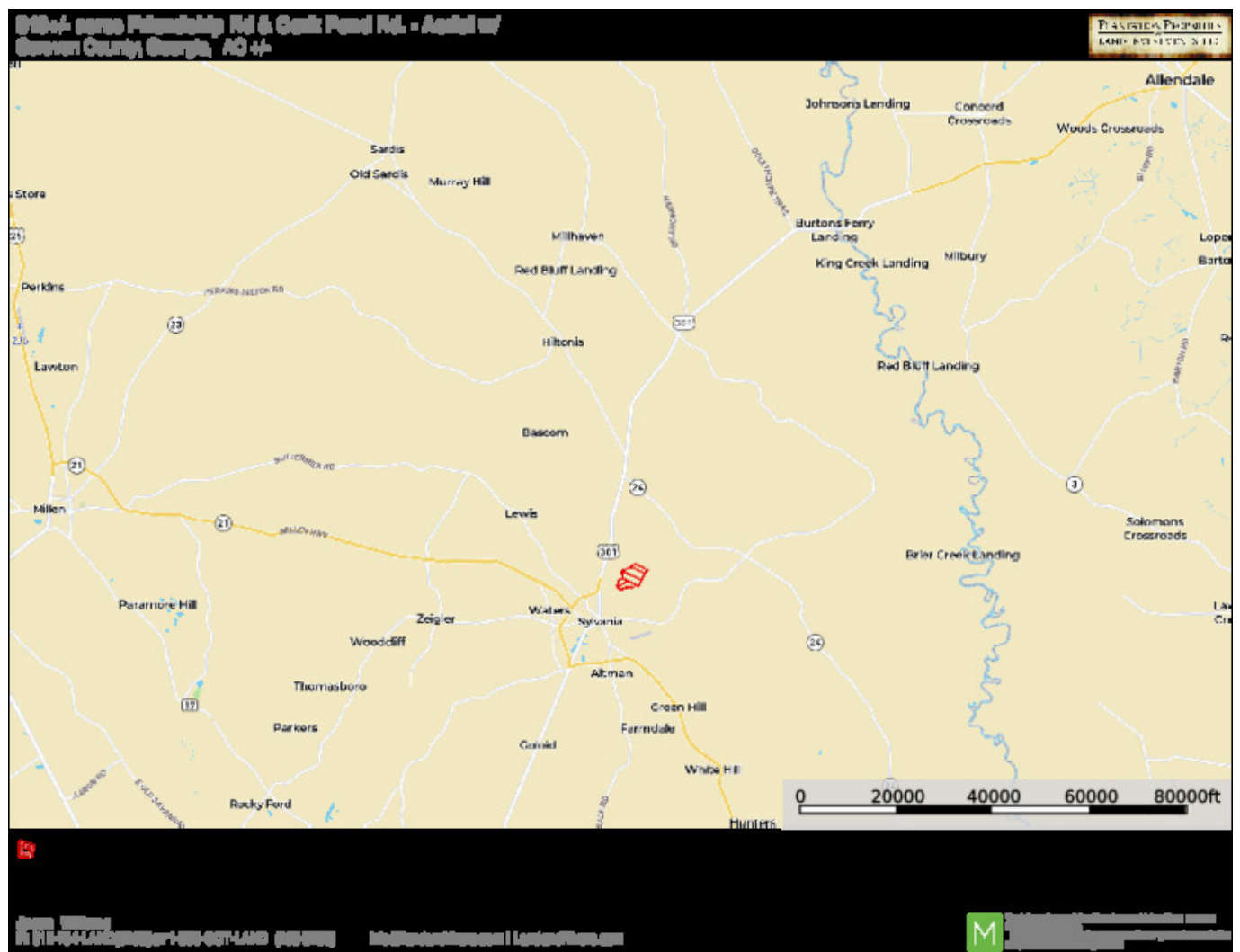
Google Maps link: [View Larger Map](#)

Friendship Pines - Tract 4

Published on Plantation Properties & Land Investments, LLC (<https://landandrivers.com>)



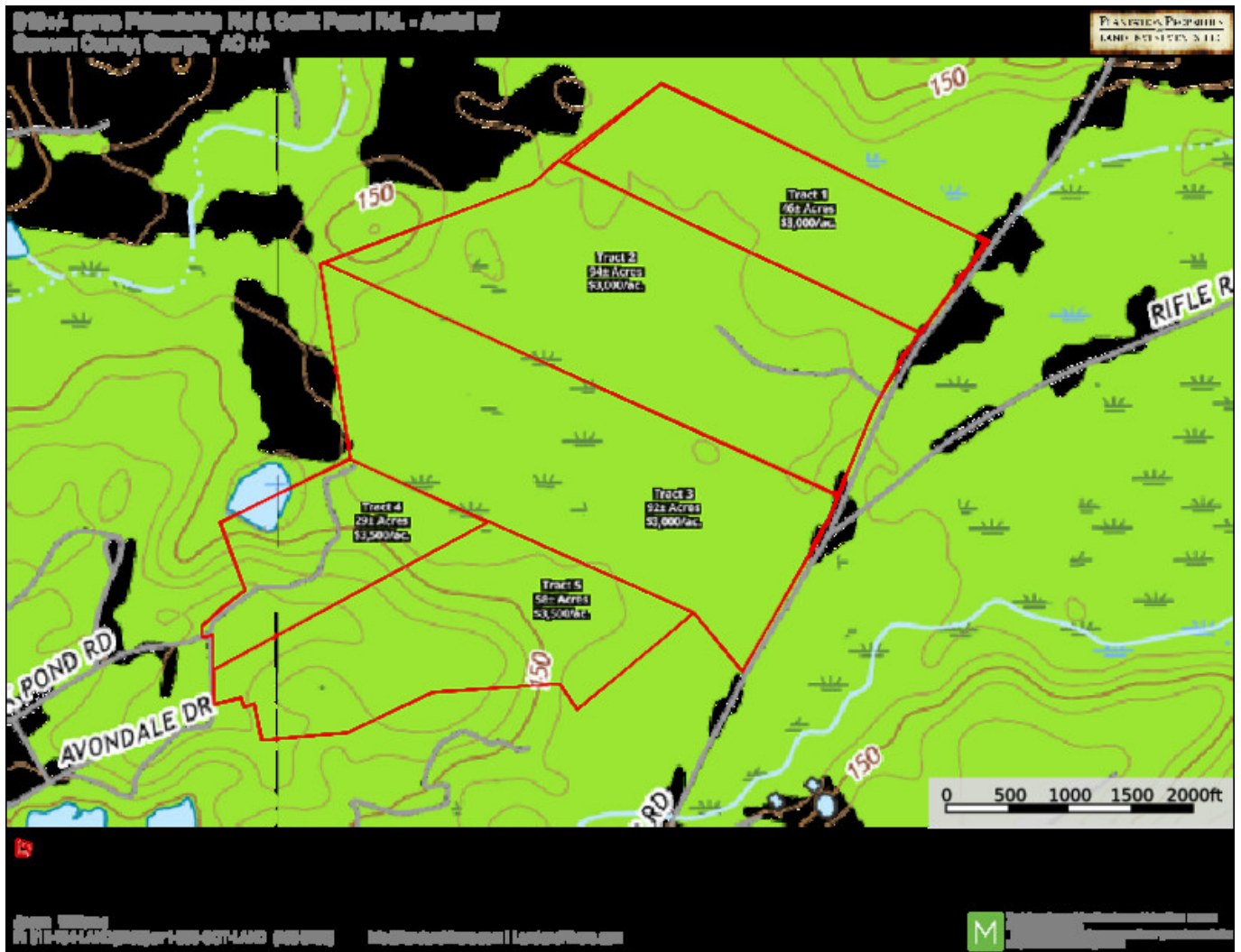
Location Map



Topo Map

Friendship Pines - Tract 4

Published on Plantation Properties & Land Investments, LLC (<https://landanddrivers.com>)

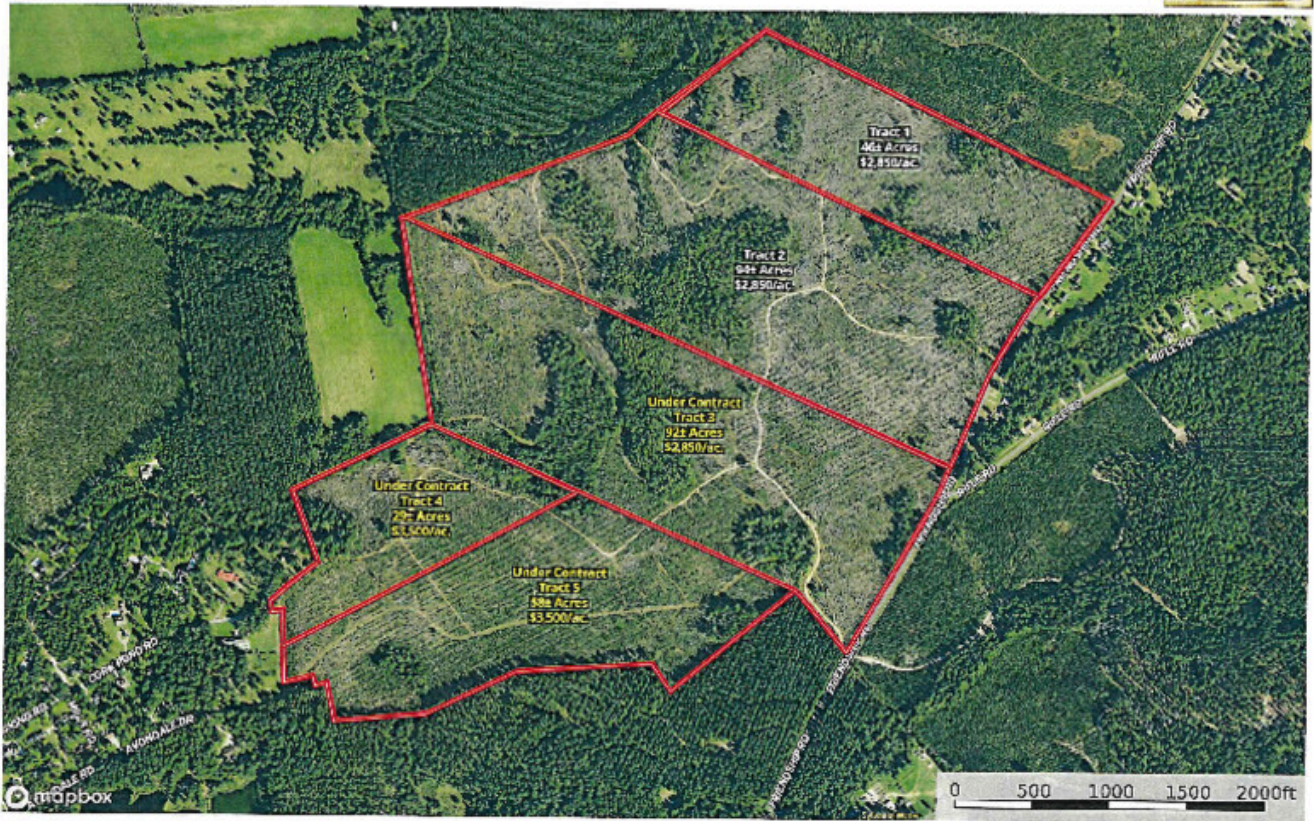


Aerial Map

Friendship Pines - Tract 4

Published on Plantation Properties & Land Investments, LLC (<https://landanddrivers.com>)

319+/- acres Friendship Rd & Cork Pond Rd. - Divided
Scraper County, Georgia, AC 17-



Jason Williams
P. 770-731-LAND (3669) or 1-800-607-LAND (3669) | info@landanddrivers.com | Landon \$1000's/acre



Source URL: <https://landanddrivers.com/property/friendship-pines-tract-4>