

Friendship Pines - Tract 5

Published on Plantation Properties & Land Investments, LLC (<https://landandrivers.com>)



Friendship Pines - Tract 5

Tract 5 is a 58± acre tract with road frontage on Avondale Dr. The property is mainly made up of young planted pines with a few small patches of old hardwoods/pine mix. This would make for a beautiful homesite or weekend retreat. Call us today to schedule a viewing! 912.764.LAND(5263)

*/



Price: \$203,000

Property Type: Land

Status: Sold

Street/Address: Friendship Rd.

City: Sylvania

State: Georgia

Zip code: 30467

County: screven

Acreage: 58

Per Acre Price: \$3,500.00

Phone Number: 912.764.LAND(5263)

Email: info@LandandRivers.com

Google Maps link: [View Larger Map](#)

Friendship Pines - Tract 5

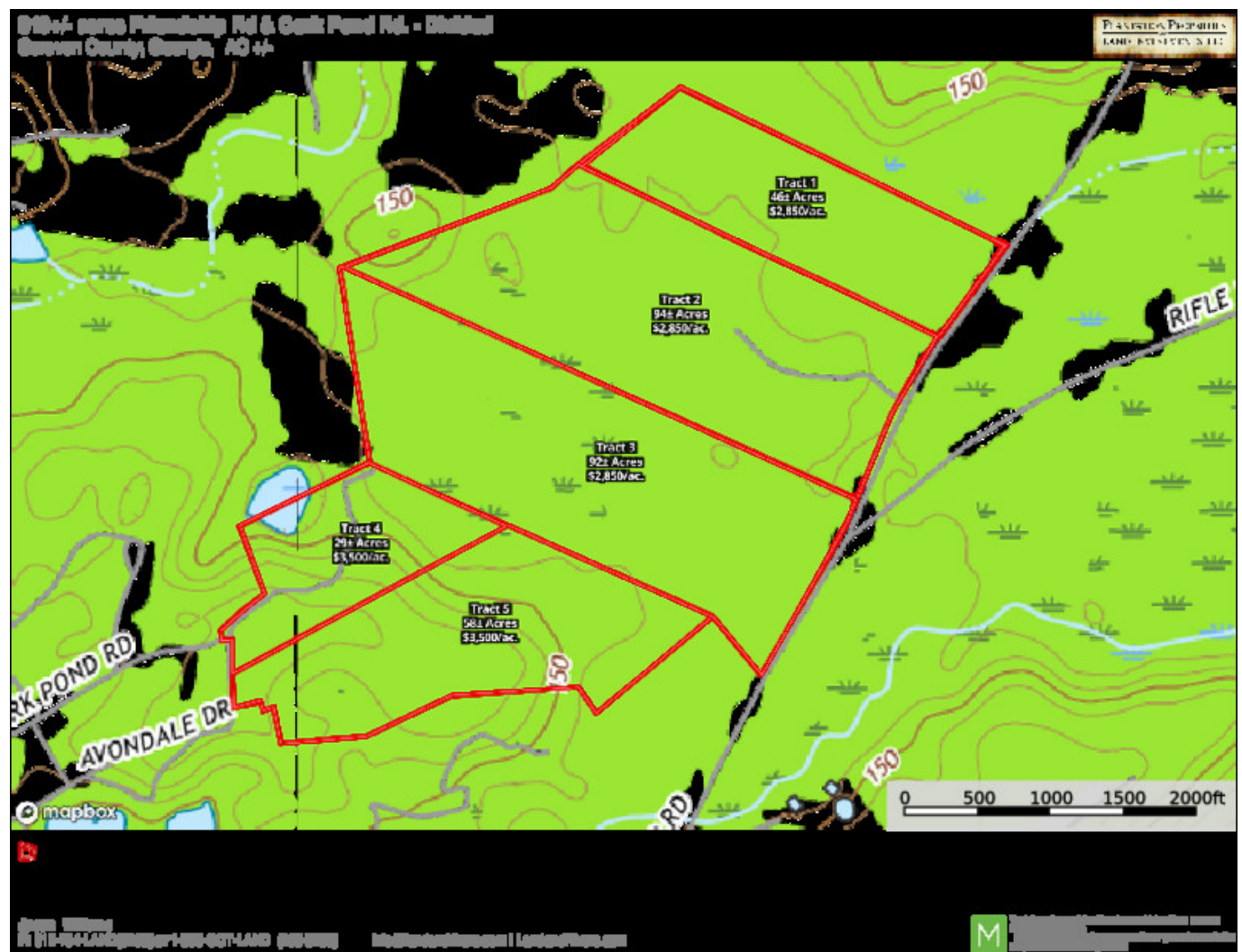
Published on Plantation Properties & Land Investments, LLC (<https://landandrivers.com>)



Topo Map

Friendship Pines - Tract 5

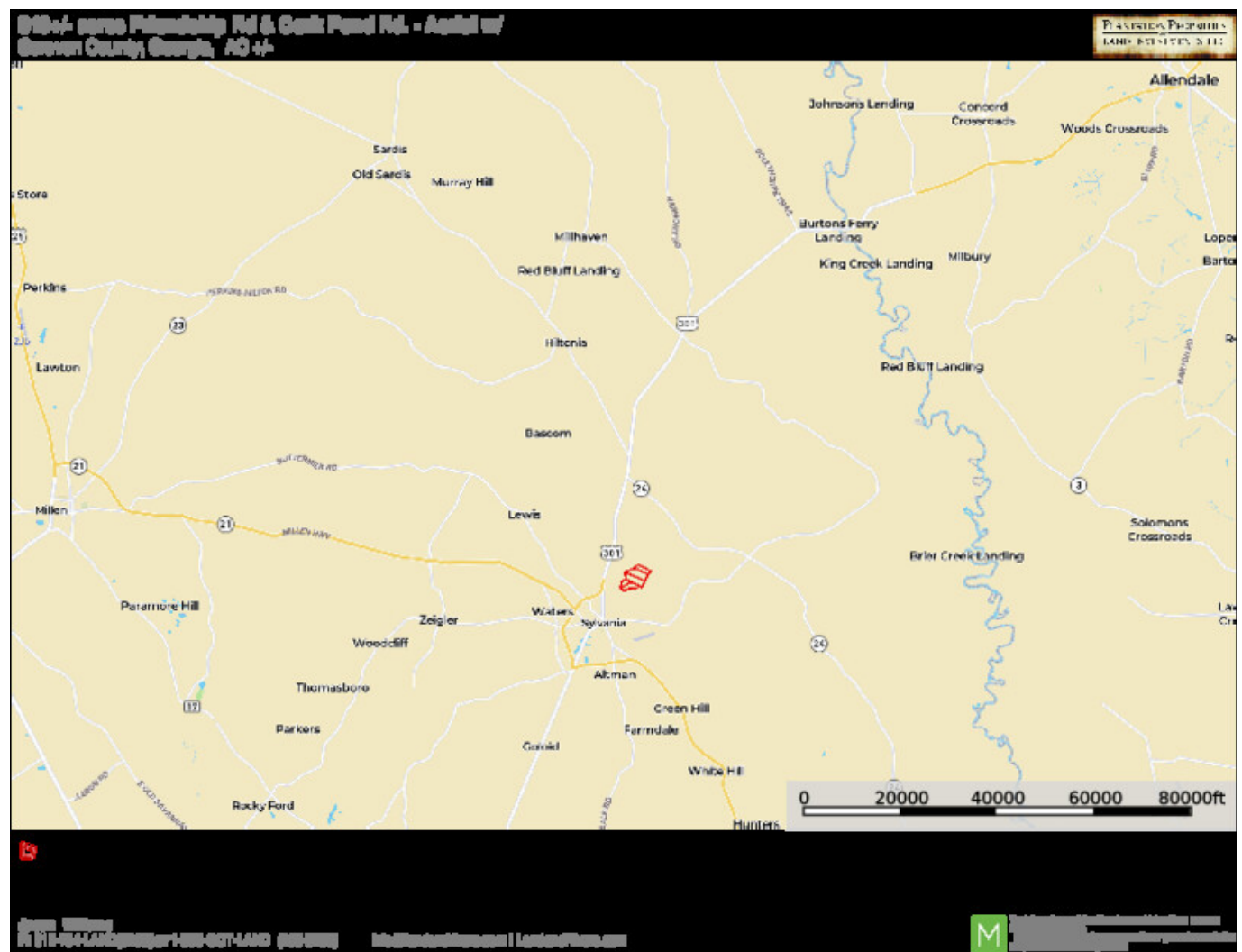
Published on Plantation Properties & Land Investments, LLC (<https://landandrivers.com>)



Location Map

Friendship Pines - Tract 5

Published on Plantation Properties & Land Investments, LLC (<https://landandrivers.com>)

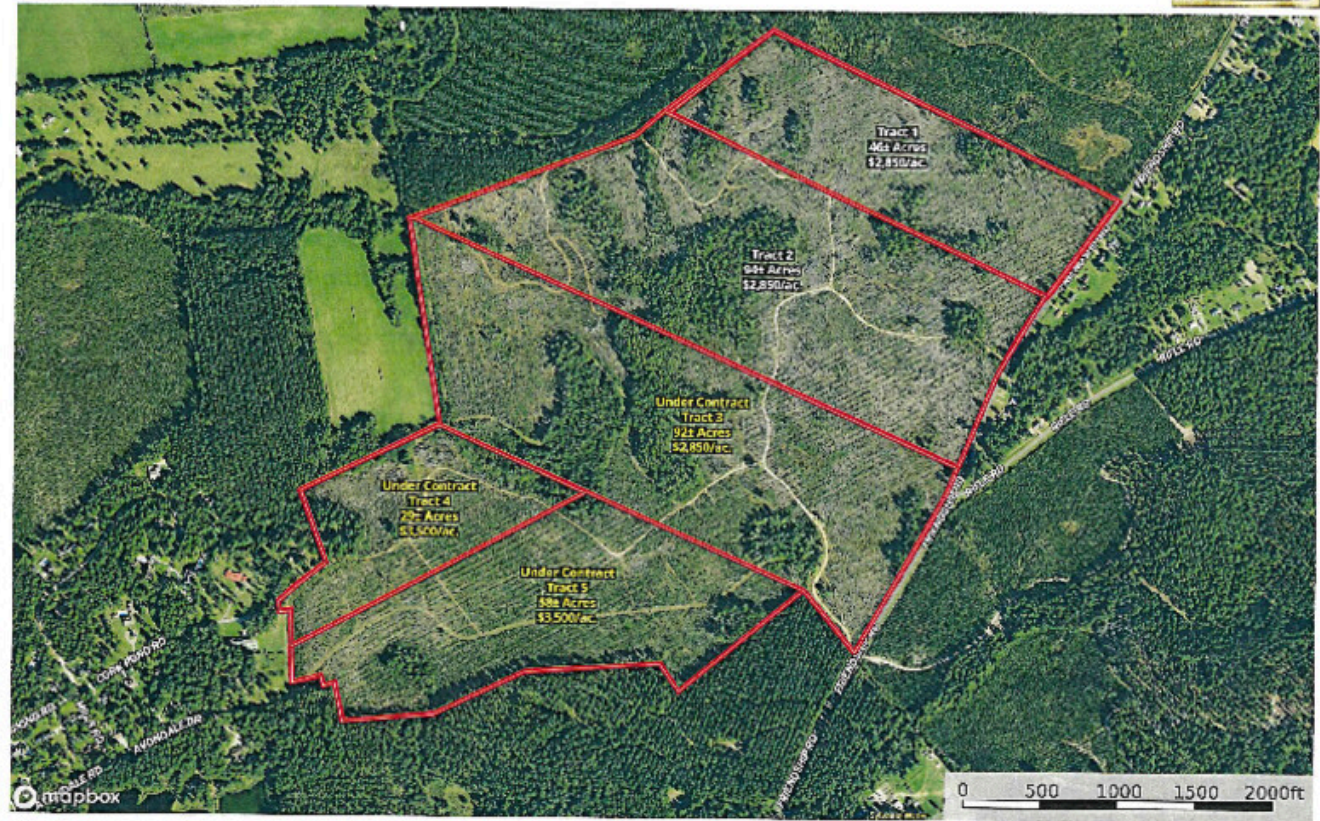


Aerial Map

Friendship Pines - Tract 5

Published on Plantation Properties & Land Investments, LLC (<https://landanddrivers.com>)

3194+/- acres Friendship Rd & Cork Pond Rd. - Divided
Scraper County, Georgia, AC 47-



Jaden Williams
P. 770-734-LANDISCOVER | 1-800-607-LAND | (606) 325-5555 | info@landanddrivers.com | landanddrivers.com

M This is a preliminary map and should not be used for legal purposes. It is intended for informational purposes only. The information is subject to change without notice. © 2023 M. All rights reserved.

Source URL: <https://landanddrivers.com/property/friendship-pines-tract-5>