



Greenhouse Homeplace - Tract 1

Greenhouse Homeplace Tract 1 is 22.46± acres right outside of Metter on Highway 46 and Greenhouse Rd. The property already has electricity on it and would make for a great future home site or weekend getaway. It is made up of mostly volunteer pines and some open land. Only an hour drive to Savannah and 20 minutes from Statesboro. Call today to schedule a viewing 912.764.5263(LAND)



Price: \$151,500

Property Type: Land

Status: Sold

Street/Address: E. Hwy 46 & Greenhouse Rd.

City: Metter

State: Georgia

Zip code: 30439

County: candler

Acreage: 22

Per Acre Price: \$0.00

Phone Number: 912.764.LAND(5263)

Email: info@LandandRivers.com

Google Maps link: [View Larger Map](#)

Greenhouse Homeplace - Tract 1

Published on Plantation Properties & Land Investments, LLC (<https://landanddrivers.com>)



Aerial

Greenhouse Homeplace - Tract 1

Published on Plantation Properties & Land Investments, LLC (<https://landandrivers.com>)

47.5+/- acres on E. Hwy 46 - Divided
Candler County, Georgia. 47.5 AC +/-

PLANTATION PROPERTIES
&
LAND INVESTMENTS, LLC



Esri.com

Jason Williams

P: (912) 664-LAND (6233) or 1 (855) 607-LAND (666-6233)

info@landandrivers.com

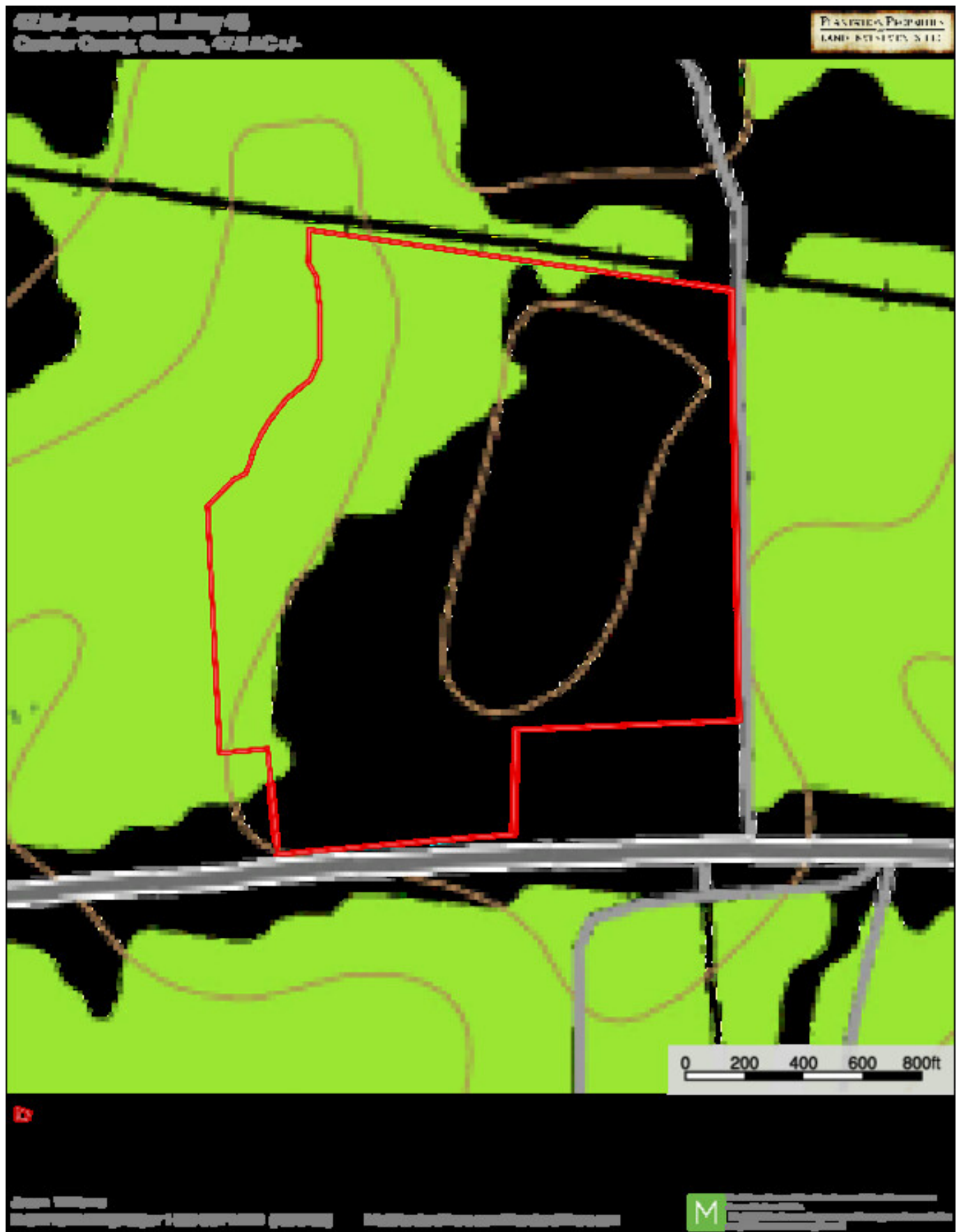


Mapbox is a registered trademark of Mapbox Inc. All other trademarks are the property of their respective owners.

Topo Map

Greenhouse Homeplace - Tract 1

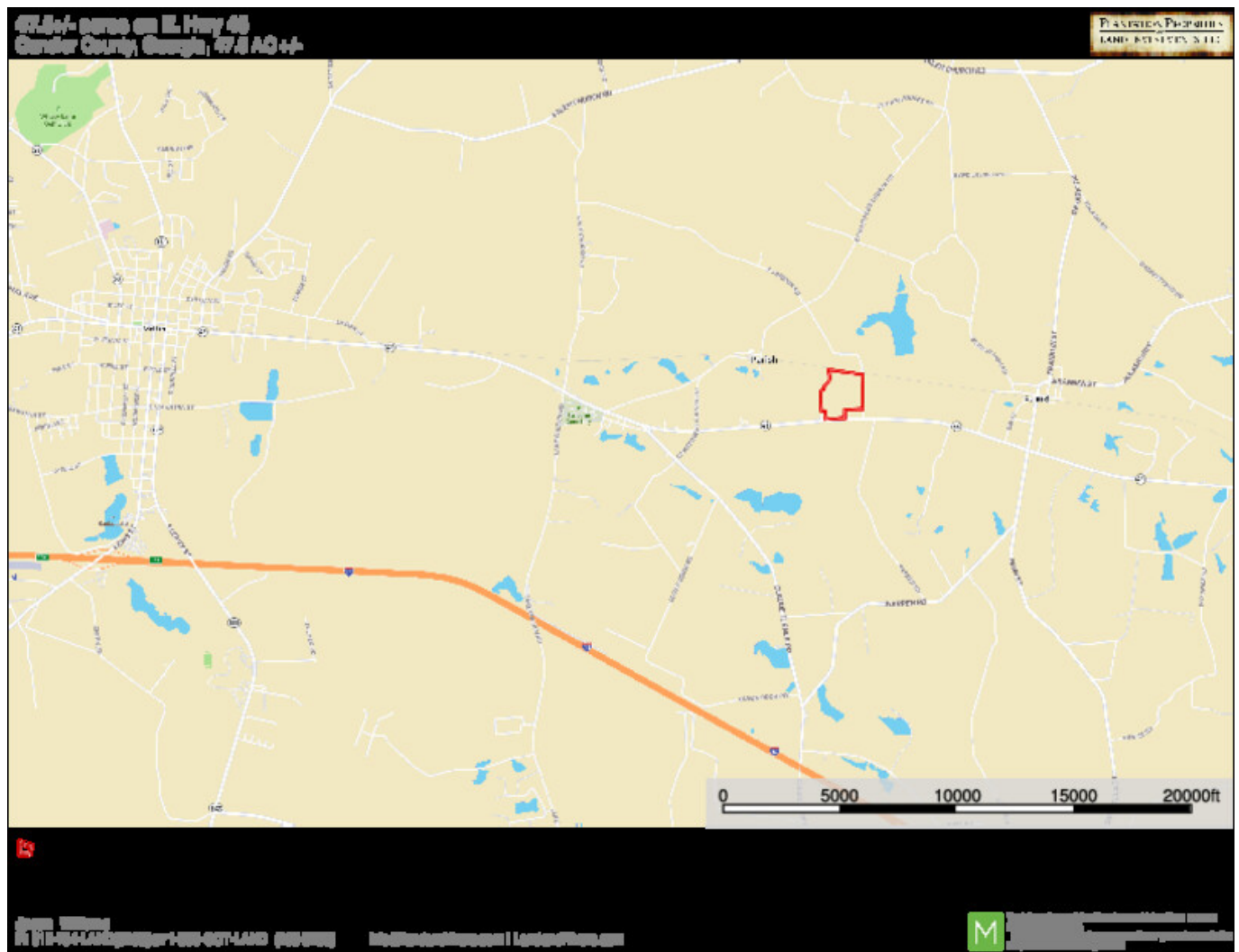
Published on Plantation Properties & Land Investments, LLC (<https://landanddrivers.com>)



Location Map

Greenhouse Homeplace - Tract 1

Published on Plantation Properties & Land Investments, LLC (<https://landandrivers.com>)



Source URL: <https://landandrivers.com/property/greenhouse-homeplace-tract-1>