

PLANTATION PROPERTIES & LAND INVESTMENTS, LLC

G-Ranch

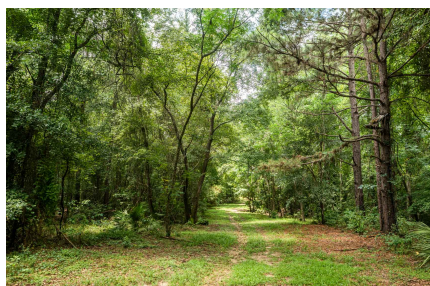
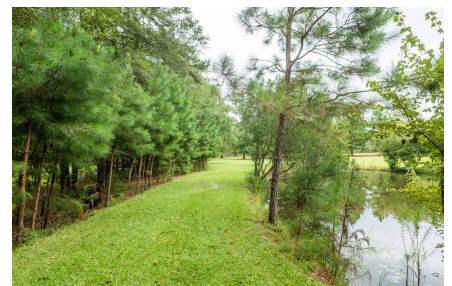
Introducing G-Ranch! A beautiful 187 acre tract with Cabin in Tattnall County! This property features a wooden 2 bedroom 1 bath cabin, outdoor cooking pavilion, and a nice garage shop. G-Ranch an outdoorsman's paradise. The land is mostly wooded with a strategically placed openings along the internal road systems. The entrance of the property is in planted pines. Thomas creek creates the western boundary line of the property, which provides a key water source for all wildlife that inhabits the 187 acres. Along Thomas creek you will find loads of mature hardwoods, which provides the perfect roosting place for turkeys. There are numerous game patches on the property, perfect for implementing food plots and feeders. The well designed internal road system on the property allows you to get around the property with ease, and get the most out of your land. There isn't a better place to bring your hunting buddies, family, and friends. G-Ranch is a top notch recreational retreat. Call us today to check it out, you'll be glad you did.



Price: \$550,000
Property Type: Land
Status: Sold
Street/Address: 403 St. Williams Baptist Ch. St.
City: Reidsville
State: Georgia
Zip code: 30453
County: tattnall
Acreage: 187
Per Acre Price: \$0.00
Phone Number: 912-764-LAND (5263)
Email: info@LandandRivers.com
Google Maps link: [View Larger Map](#)

G-Ranch

Published on Plantation Properties & Land Investments, LLC (<https://landanddrivers.com>)



Aerial Map

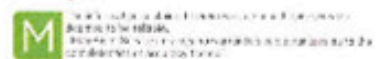
187+/- acs - 403 St. Williams Baptist Ch St.
Tattnall County, Georgia, AC +/-



Boundary

Jason Williams
P: 912-764- AND(5213) or 1-833-CCT-LAND (468-6283)

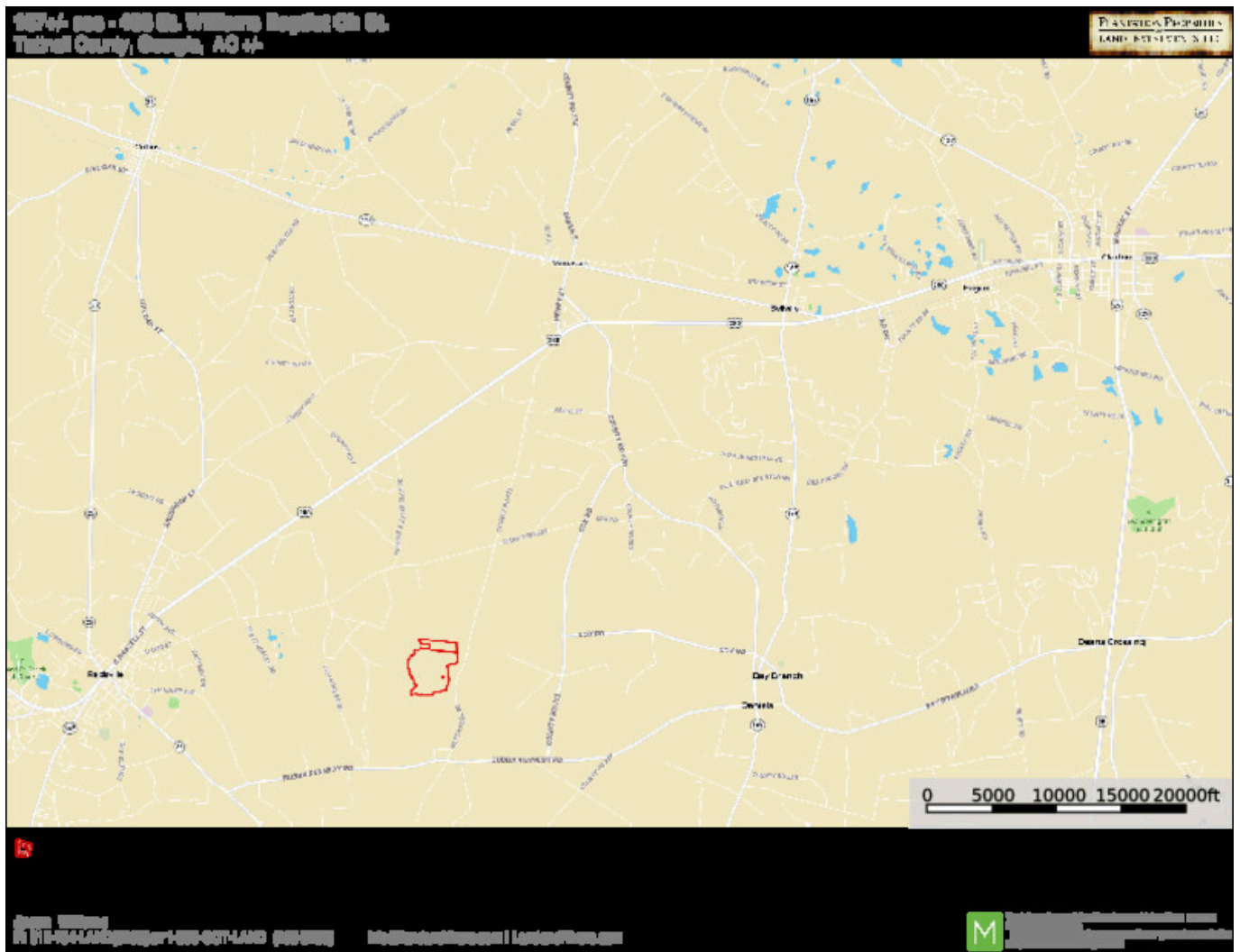
info@landanddrivers.com



G-Ranch

Published on Plantation Properties & Land Investments, LLC (<https://landandrivers.com>)

Location Map



Source URL: <https://landandrivers.com/property/g-ranch>