

## Spell Road Retreat

Published on Plantation Properties & Land Investments, LLC (<https://landandrivers.com>)

---



## Spell Road Retreat

Spell Road Retreat is an immaculate, multi-use farm in Candler County with endless opportunity! A charming log home with a large deck overlooking a pond is the central focus of the 34± acre property; which also features a small area of mature pines, fenced pasture land and natural hardwoods. The 2,311 sq. ft. home features a large living area with heart pine floors and stone fireplace, a spacious kitchen, 4 bedrooms, 3 baths, an office that could easily convert to a 5th bedroom and a basement. Other structures include a home office or guest house with a kitchen and bath, a 30x60 equipment shelter, two shelters on concrete slabs (18x90 & 18x45), a 4-stall horse barn and a small horse shelter. In addition to the well that services the home, there is also a 4" well that feeds the ponds and the home has a backup Generac generator that will power the whole house. Whether you are looking for a place to call home, weekend retreat, equestrian or hobby farm, this well-maintained property is a must see! Enjoy relaxing on the dock, sitting around the fire pit on chilly nights, horseback or ATV riding, and much more all on your own land. Conveniently located north of Metter, GA and approximately 20 minutes from Statesboro, GA, this property is just 10 miles from I-16, where you can be in Savannah in approximately 1 hour, Macon in 1.5 hours or Jacksonville in less than 3 hours. This turn-key property won't last long. Call us today to schedule a private showing! 912.764.LAND(5263)



**Price:** \$495,000

**Property Type:** Residential

**Status:** Sold

**Street/Address:** 2323 Spell Rd.

**City:** Metter

**State:** Georgia

**Zip code:** 30439

**County:** candler

# Spell Road Retreat

Published on Plantation Properties & Land Investments, LLC (<https://landandrivers.com>)

---

**Acreage:** 34

**Per Acre Price:** \$0.00

**Phone Number:** 912.764.LAND(5263)

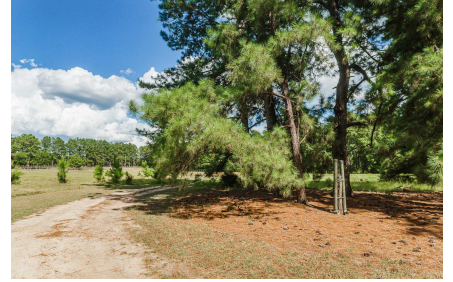
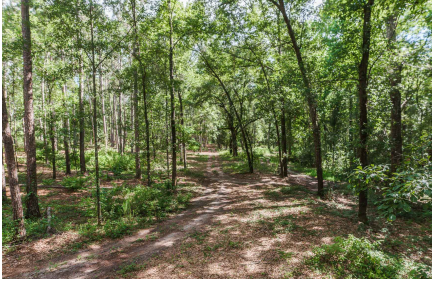
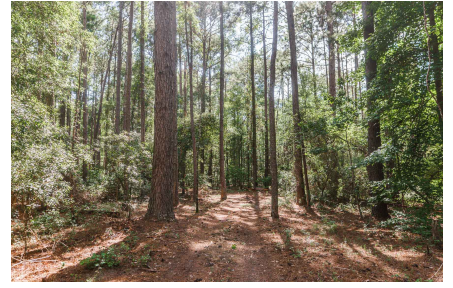
**Email:** [info@LandandRivers.com](mailto:info@LandandRivers.com)

**Google Maps link:** [View Larger Map](#)



# Spell Road Retreat

Published on Plantation Properties & Land Investments, LLC (<https://landandrivers.com>)



# Spell Road Retreat

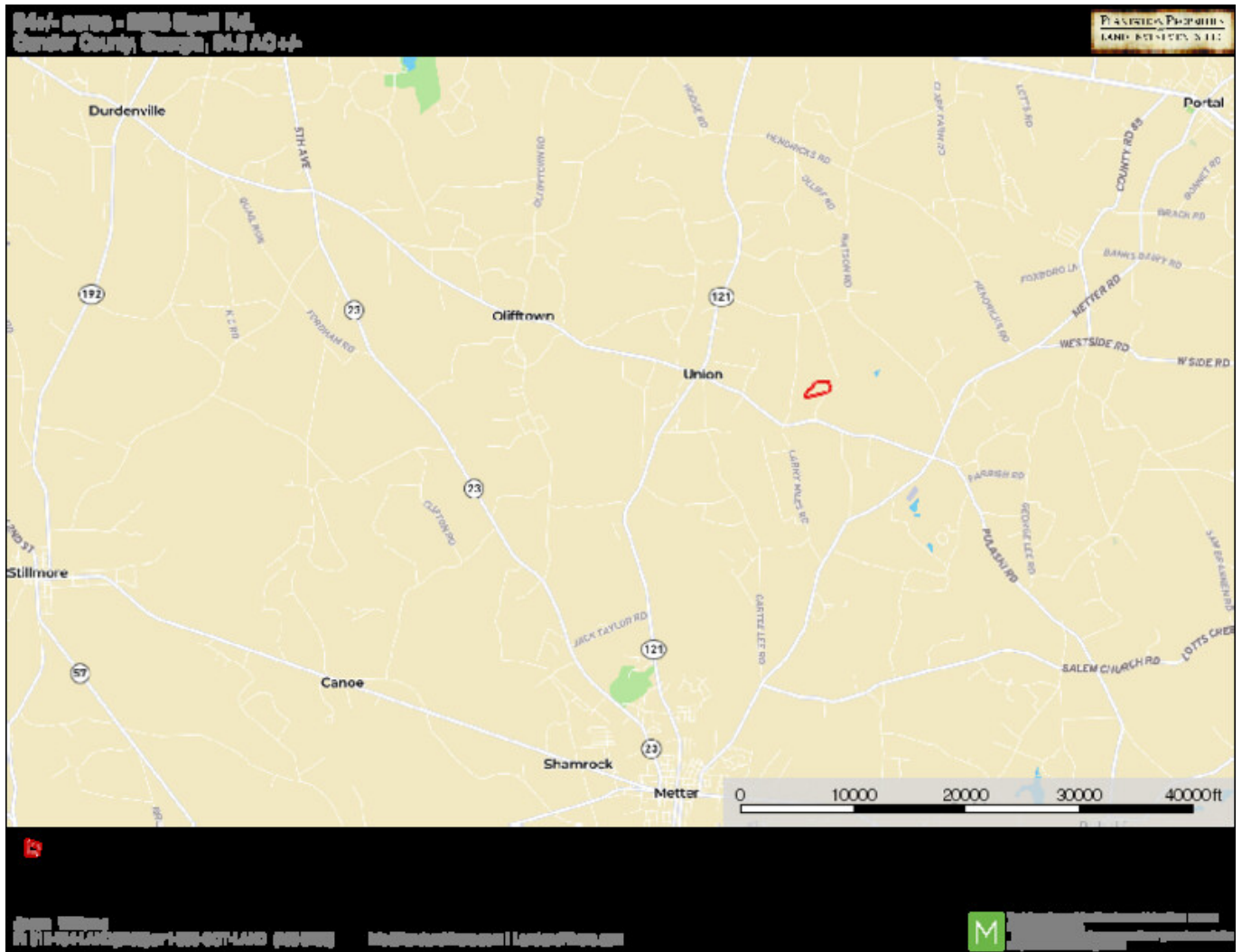
Published on Plantation Properties & Land Investments, LLC (<https://landanddrivers.com>)



# Spell Road Retreat

Published on Plantation Properties & Land Investments, LLC (<https://landanddrivers.com>)

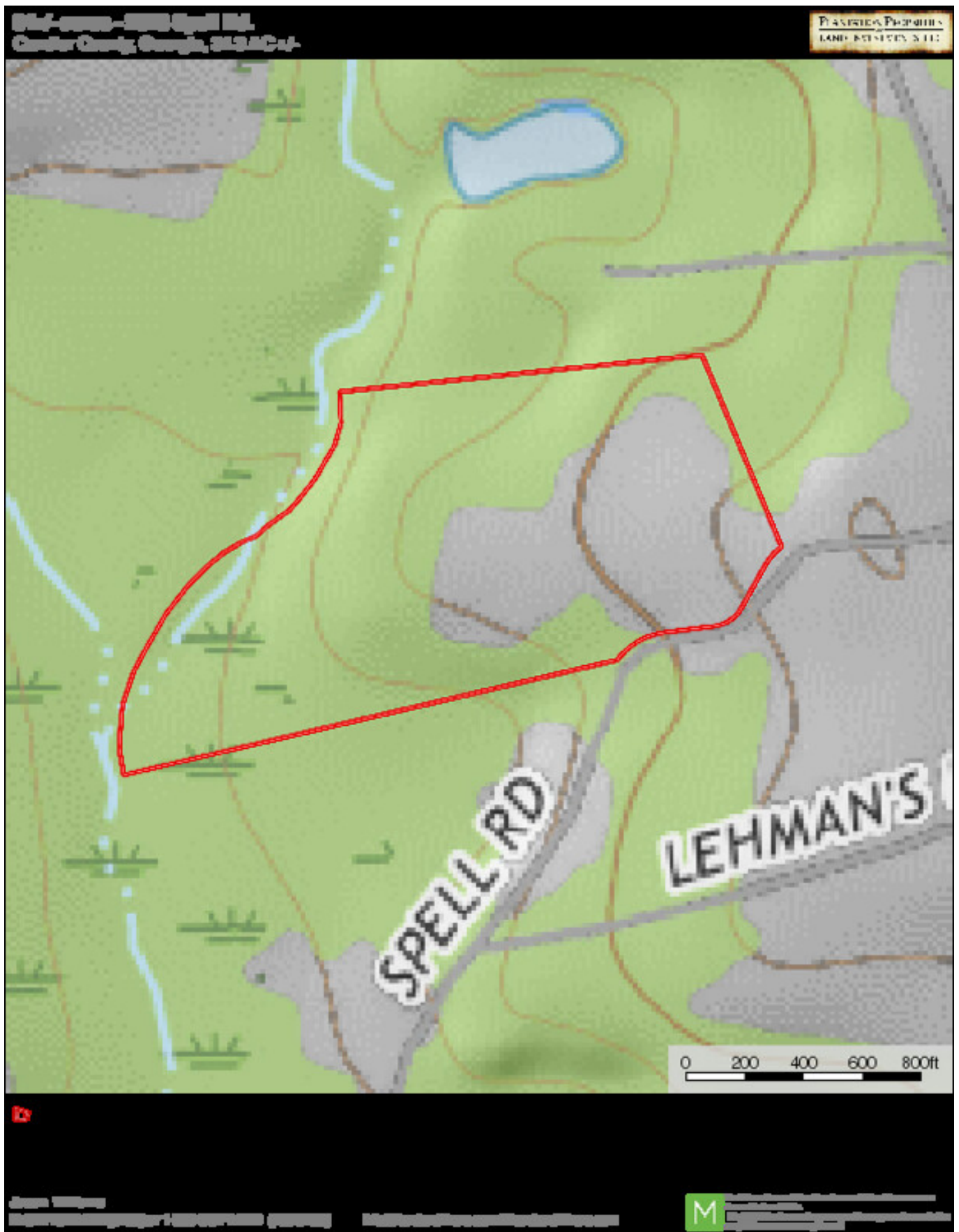
## Location Map



## Topo Map

# Spell Road Retreat

Published on Plantation Properties & Land Investments, LLC (<https://landandrivers.com>)



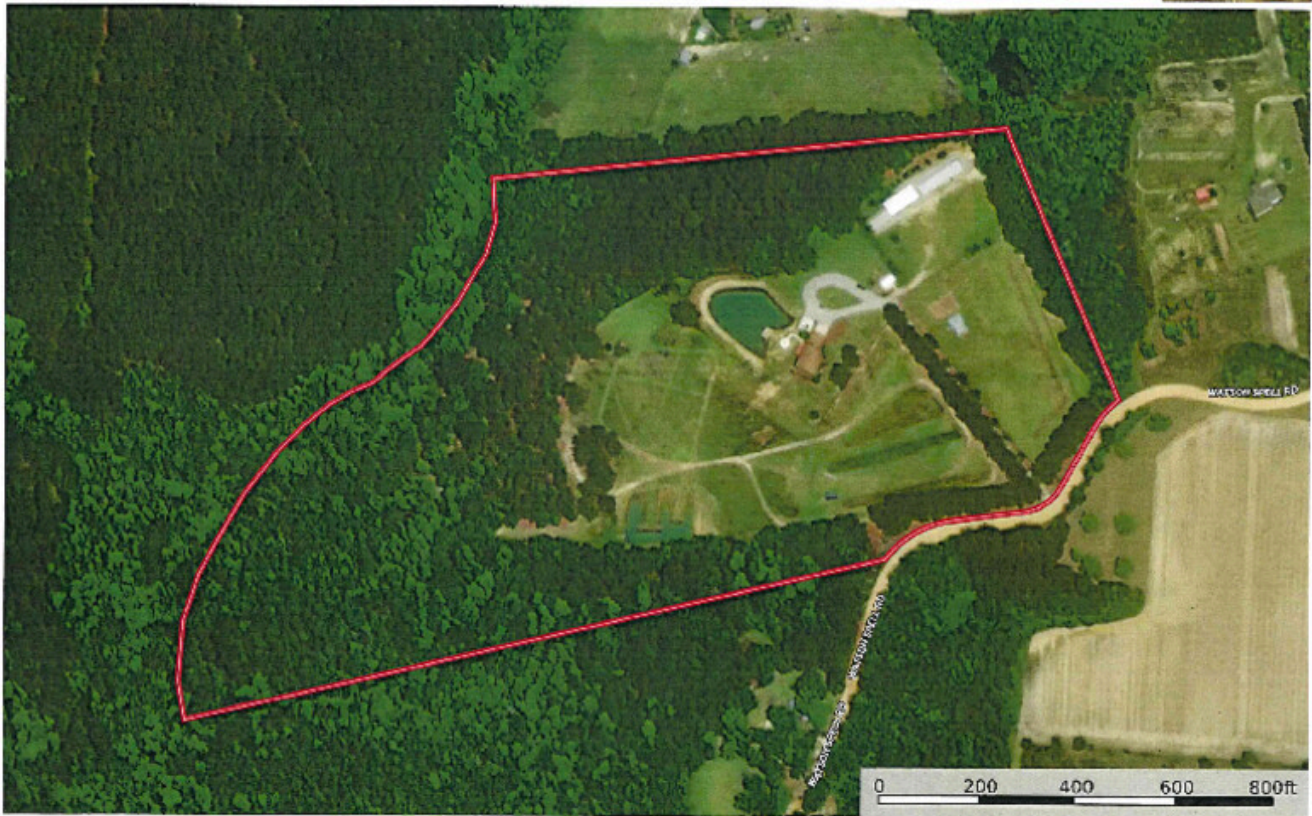
## Aerial Map

# Spell Road Retreat

Published on Plantation Properties & Land Investments, LLC (<https://landandrivers.com>)

34+/- acres - 2323 Spell Rd.  
Candler County, Georgia, 34.3 AC +/-

PLANTATION PROPERTIES  
LAND INVESTMENTS, LLC



Star by

Jason Williams  
P. 912.761.2442 (LAKD5263) or 1.800.907.2442 (LAKD 1468 5215) | [info@landandrivers.com](mailto:info@landandrivers.com) | [landandrivers.com](https://landandrivers.com)

M This work is provided as a service to our clients and is not intended to constitute an offer of any financial product or service. Please contact your broker or advisor for more information.

Source URL: <https://landandrivers.com/property/spell-road-retreat-0>