

Harold Howell Tract 2

Published on Plantation Properties & Land Investments, LLC (<https://landandrivers.com>)



Harold Howell Tract 2

Harold Howell Tract 2 - 34± acres in northern Bulloch County! This property features a 6± acre pond with natural pine and hardwoods throughout along with several open areas, including a 2± acre cultivated field. The 1270 sq. ft. home overlooking the pond has 2 bedrooms and 2 baths and would make a great starter home, weekend retreat cabin or a place to live while you build your dream home. There is also another small structure that could be used for storage or a place to gather with friends and family. Located on Harold Howell Rd. northeast of Portal, GA and close to Hwy 25 where you can be in Statesboro, GA in 15 minutes or just an hour drive to Augusta, GA. Call today to schedule a time to see this property! 912.764.LAND(5263)



Price: \$205,000

Property Type: Land

Status: Sold

Street/Address: 1652 Harold Howell Rd.

City: Portal

State: Georgia

Zip code: 30450

County: bulloch

Acreage: 34

Per Acre Price: \$0.00

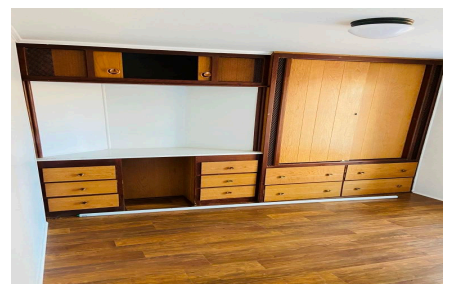
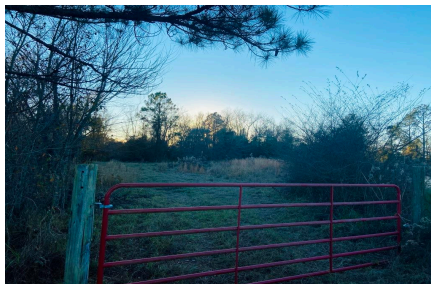
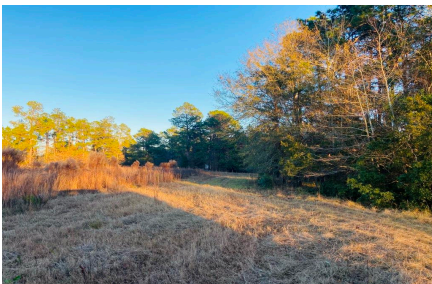
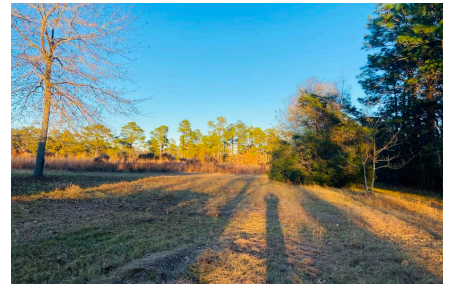
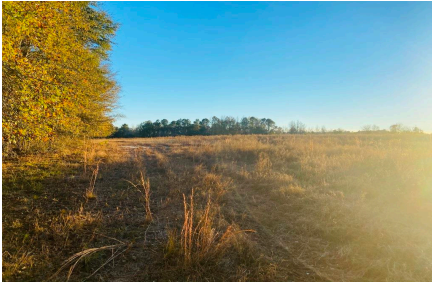
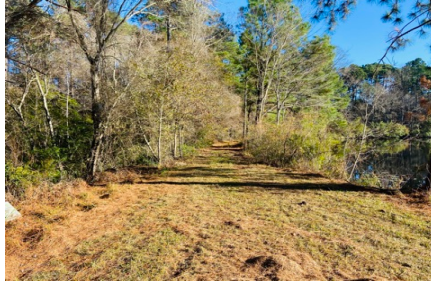
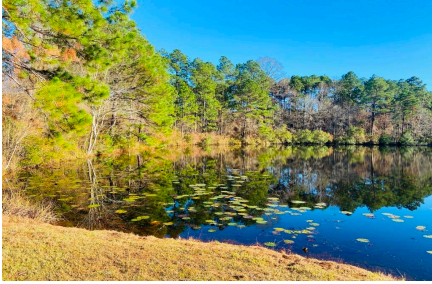
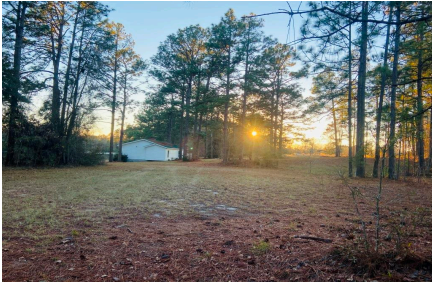
Phone Number: 912.764.LAND(5263)

Email: info@LandandRivers.com

Google Maps link: [View Larger Map](#)

Harold Howell Tract 2

Published on Plantation Properties & Land Investments, LLC (<https://landandrivers.com>)



Published on Plantation Properties & Land Investments, LLC (<https://landandrivers.com>)



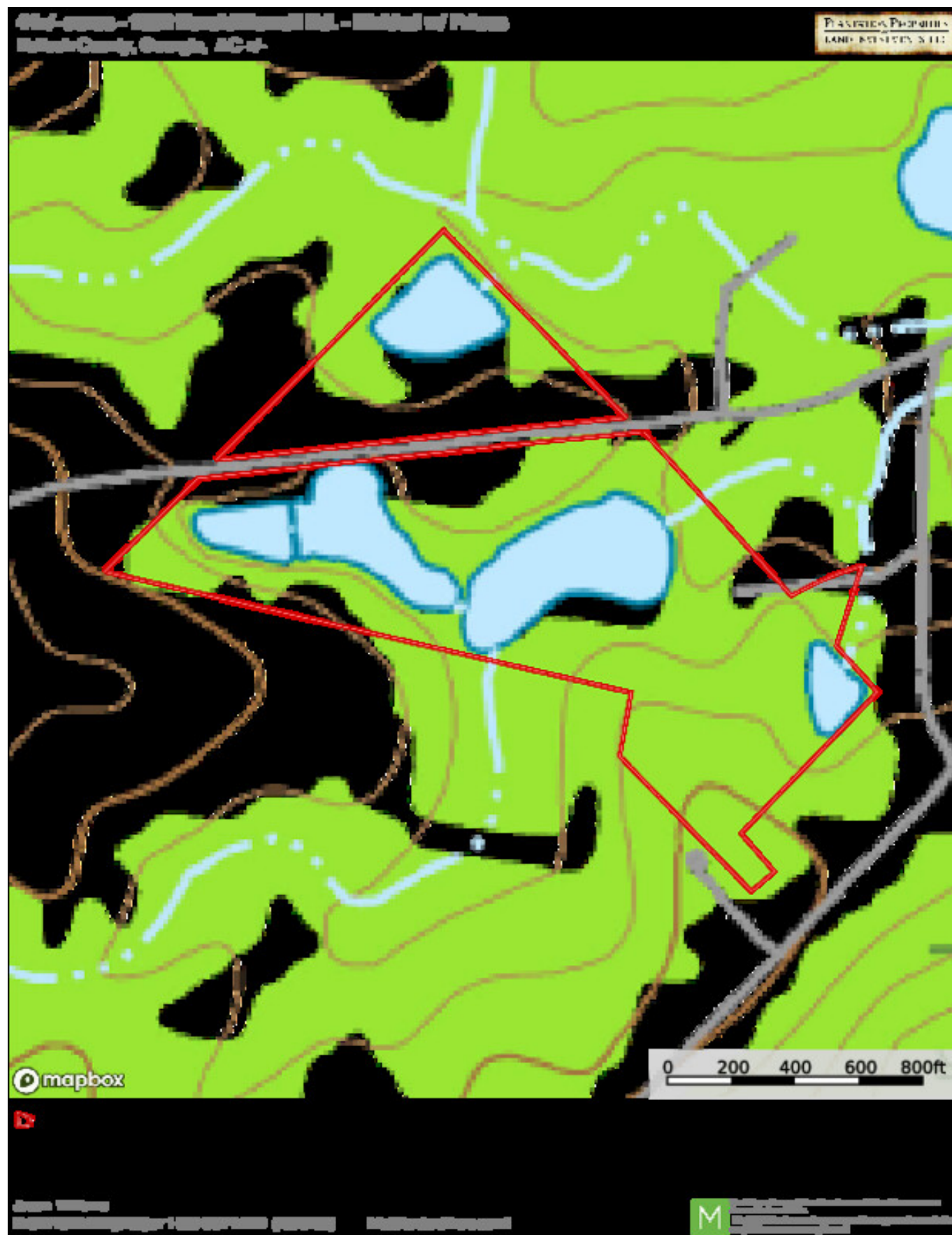
Detailed Aerial



Topo Map

Harold Howell Tract 2

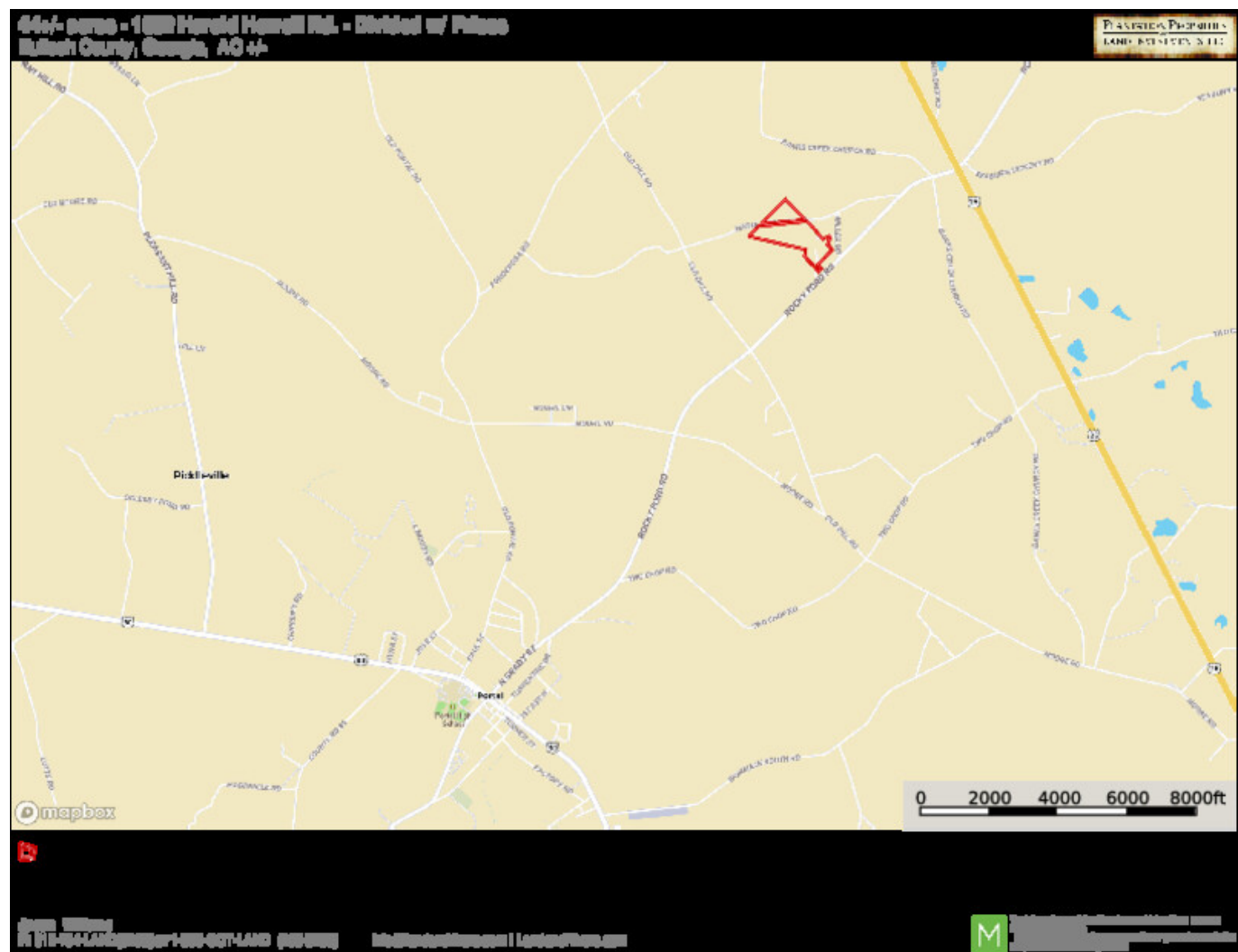
Published on Plantation Properties & Land Investments, LLC (<https://landandrivers.com>)



Location Map

Harold Howell Tract 2

Published on Plantation Properties & Land Investments, LLC (<https://landanddrivers.com>)



Source URL: <https://landanddrivers.com/property/harold-howell-tract-2>