



Ogeechee Homeplace & Farm

- **Ogeechee Homeplace & Farm** – Enjoy the beautiful view as you make your way down the drive to this classic southern colonial-style home situated in the center of a 128± acre farm; located 6 miles outside of Sylvania, GA in Screven County. Most of the property consists of fenced and cross-fenced pasture land with wooded land almost entirely around the property borders and a 5± acre shared pond. Additional structures on the property include a 50x50 metal barn/equipment shelter and a 20x50 metal pole barn, providing ample room for storing equipment, ATVs, boats, or trailers. In addition, there are multiple corral and working pens for cattle, and a 3-tower pivot that provides irrigation to 25± acres of the pasture land. This is truly a diverse property, providing opportunities for income-producing and recreational activities such as farming, cattle operation, hunting, and much more.
-
- Featuring a double front porch, the two-story home encompasses 6,798 square feet with 7 bedrooms, 3.5 bathrooms, and Brazilian mesquite hardwood floors spanning throughout the majority of the home. The large eat-in kitchen, with stainless steel appliances, a spacious pantry, and lots of cherry wood cabinets, is ideal for family or friends to gather in. The master bedroom and bath are located on the bottom floor and boasts a large walk-in closet with built-in shelving. Also located on the bottom floor, is a den with built-in shelving and a wood-burning fireplace surrounded by an antique wood mantle from an old farmhouse, a huge laundry room, ½ bath, and formal dining and living rooms. Upstairs are 6 bedrooms, 2 full bathrooms and a sitting area with French doors leading out to the second floor front porch. All of the bedrooms have big closets and one bedroom upstairs, currently used as an office and sewing room, has built-in shelving and filing cabinets. The bedrooms and sitting area upstairs offers breathtaking views of the pasture land and incredible sunsets.
-
- Step outside French doors to the backyard where you can soak up the sun in the pool or relax and enjoy the peaceful country living on the covered patio. Just on the other side of the patio sits a pool house with a kitchen, full bathroom, tile floors, and French doors opening to the pool. This is the perfect place for entertaining or watching football games with friends and family! The two-car garage not only provides space for parking, it also has tons of built-in cabinets and shelving for storage.
-
- Located just 19 miles from Statesboro, GA and 1.25 hours from Augusta & Savannah. Call today to schedule a time to view this property! 912.764.LAND(5263)

Ogeechee Homeplace & Farm

Published on Plantation Properties & Land Investments, LLC (<https://landandrivers.com>)



Price: \$1,375,000

Property Type: Residential

Status: Sold

Street/Address: 2368 Ogeechee Rd.

City: Sylvania

State: Georgia

Zip code: 30467

County: screven

Acreage: 128

Per Acre Price: \$0.00

Phone Number: 912.764.LAND(5263)

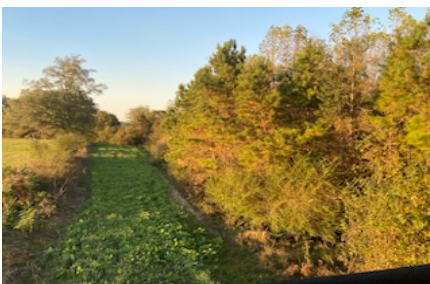
Email: Info@LandandRivers.com

Google Maps link: [View Larger Map](#)



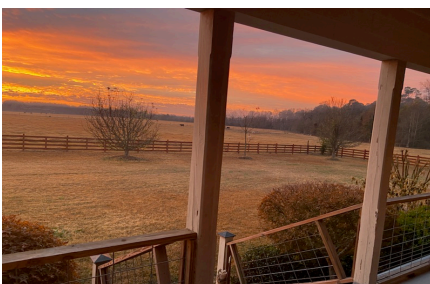
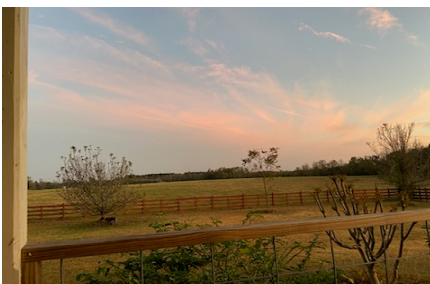
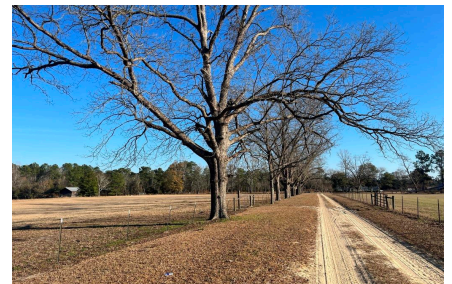
Ogeechee Homeplace & Farm

Published on Plantation Properties & Land Investments, LLC (<https://landandrivers.com>)

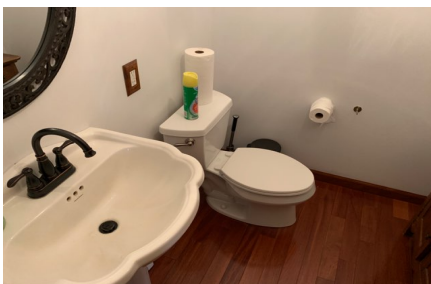


Ogeechee Homeplace & Farm

Published on Plantation Properties & Land Investments, LLC (<https://landandrivers.com>)











Aerial Map

Ogeechee Homeplace & Farm

Published on Plantation Properties & Land Investments, LLC (<https://landandrivers.com>)

128+/- acres, 2368 Ogeechee Rd.
Screven County, Georgia, AC +/-

PLANTATION PROPERTIES
LAND INVESTMENTS, LLC



© 2023 Mapbox

Jason Williams

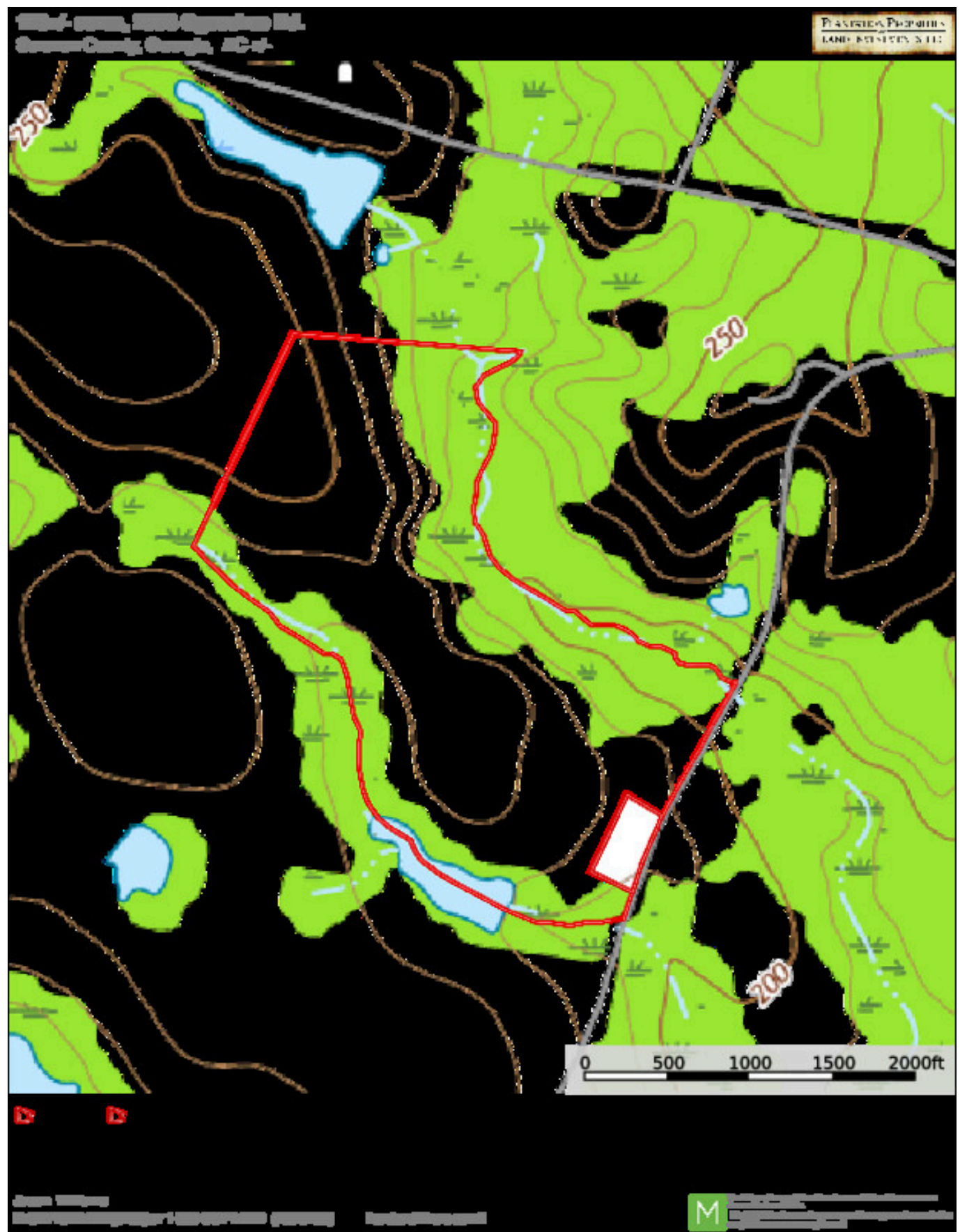
F: 912-704-LAND(5263) or 1-833-801-LAND (464-6783)

[LandAndRivers.com](https://landandrivers.com)



The content of this and other documents is for informational purposes only and does not constitute an offer of any securities. All rights are reserved. No part of this document may be reproduced without written permission from the publisher.

Topo Map



Soil Map

Ogeechee Homeplace & Farm

Published on Plantation Properties & Land Investments, LLC (<https://landandrivers.com>)

128+/- acres, 2368 Ogeechee Rd.
Screven County, Georgia, AC 11.

PLANTATION PROPERTIES
LAND INVESTMENTS, LLC



Compass - 31
Scale

Jason Williams
P: 813-796-1400 AND (904) 671-8834 or 1-888-610-FLAND (168-5263)

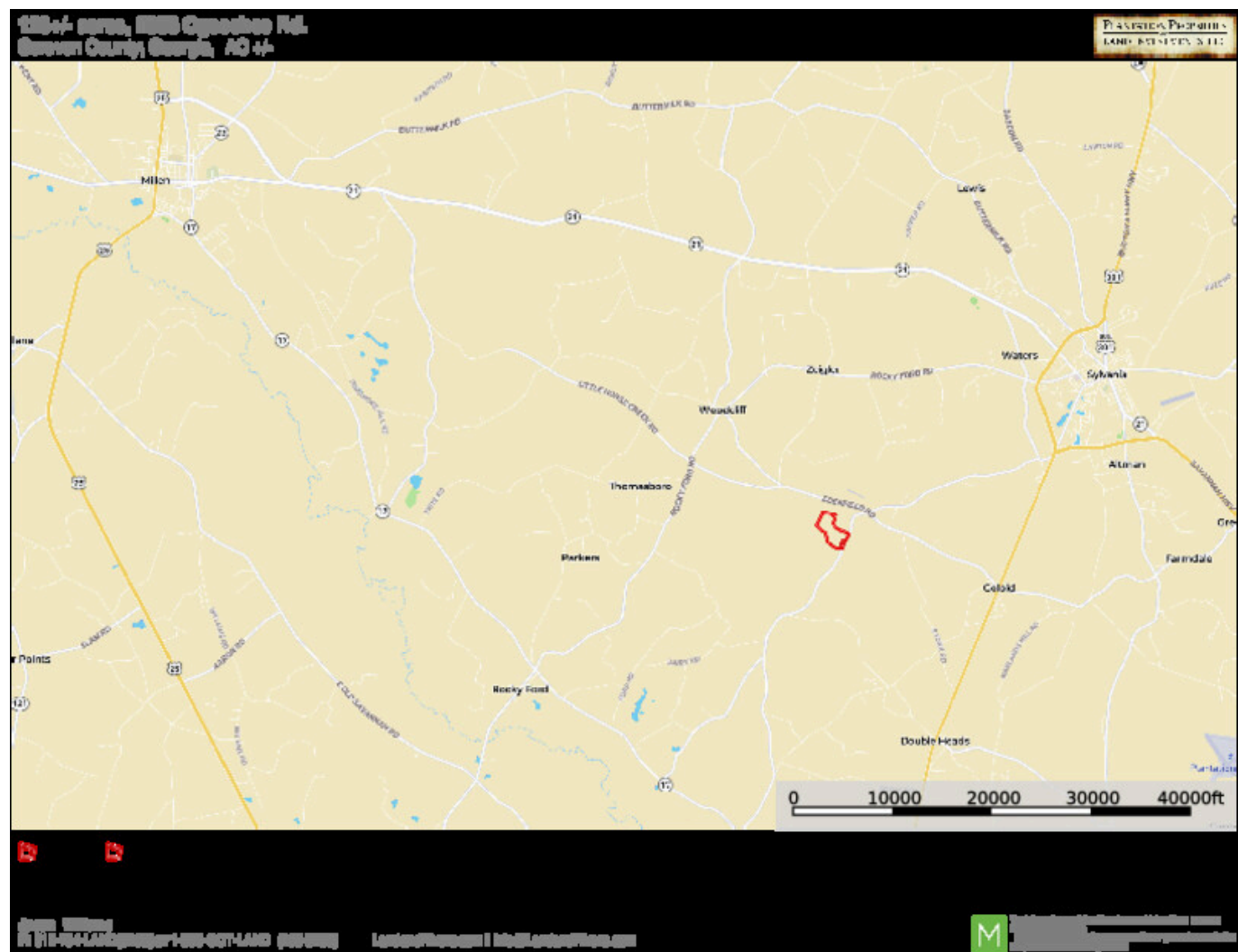
LandandRivers.com

M 100% of the property is available for sale. The property is located in a prime area for development. The property is located in a prime area for development. The property is located in a prime area for development.

Location Map

Ogeechee Homeplace & Farm

Published on Plantation Properties & Land Investments, LLC (<https://landanddrivers.com>)



Source URL: <https://landanddrivers.com/property/geechee-homeplace-farm>