

Hillside Tract

Published on Plantation Properties & Land Investments, LLC (<https://landandrivers.com>)



Hillside Tract

Hillside Tract is 52± acres located in eastern Wilkinson county. It is made up of natural hardwood bottoms and ridges with approximately 14 acres cleared in the center of the property. Electricity is available along the dirt road frontage of the tract. One corner of the property touches Hwy 57, so the drive down the dirt road is a short one to the gate. The majority of the property is upland with a small amount of bottomland lying at the feet of the impressive oak ridges. Deer, wild hogs, and turkeys are plentiful in the area. The property is bordered by large tracts on all sides and is ideal for a recreational tract or family retreat. Give us a call to see a private, easily accessible property that will provide great outdoor experiences for years to come.



Price: \$134,400

Property Type: Land

Status: Sold

Street/Address: Lord Cemetery Road

City: toombsboro

State: Georgia

Zip code: 31090

County: wilkinson

Acreage: 52

Per Acre Price: \$2,550.00

Phone Number: (478) 279-2148

Email: michael@landandrivers.com

Google Maps link: [View Larger Map](#)

Hillside Tract

Published on Plantation Properties & Land Investments, LLC (<https://landandrivers.com>)



Aerial Map

Hillside Tract

Published on Plantation Properties & Land Investments, LLC (<https://landandrivers.com>)

Lord Cemetery

Wilkinson County, Georgia, 52 AC +/-



michael.wilson
P: (478) 773-1488

michael@landandrivers.com

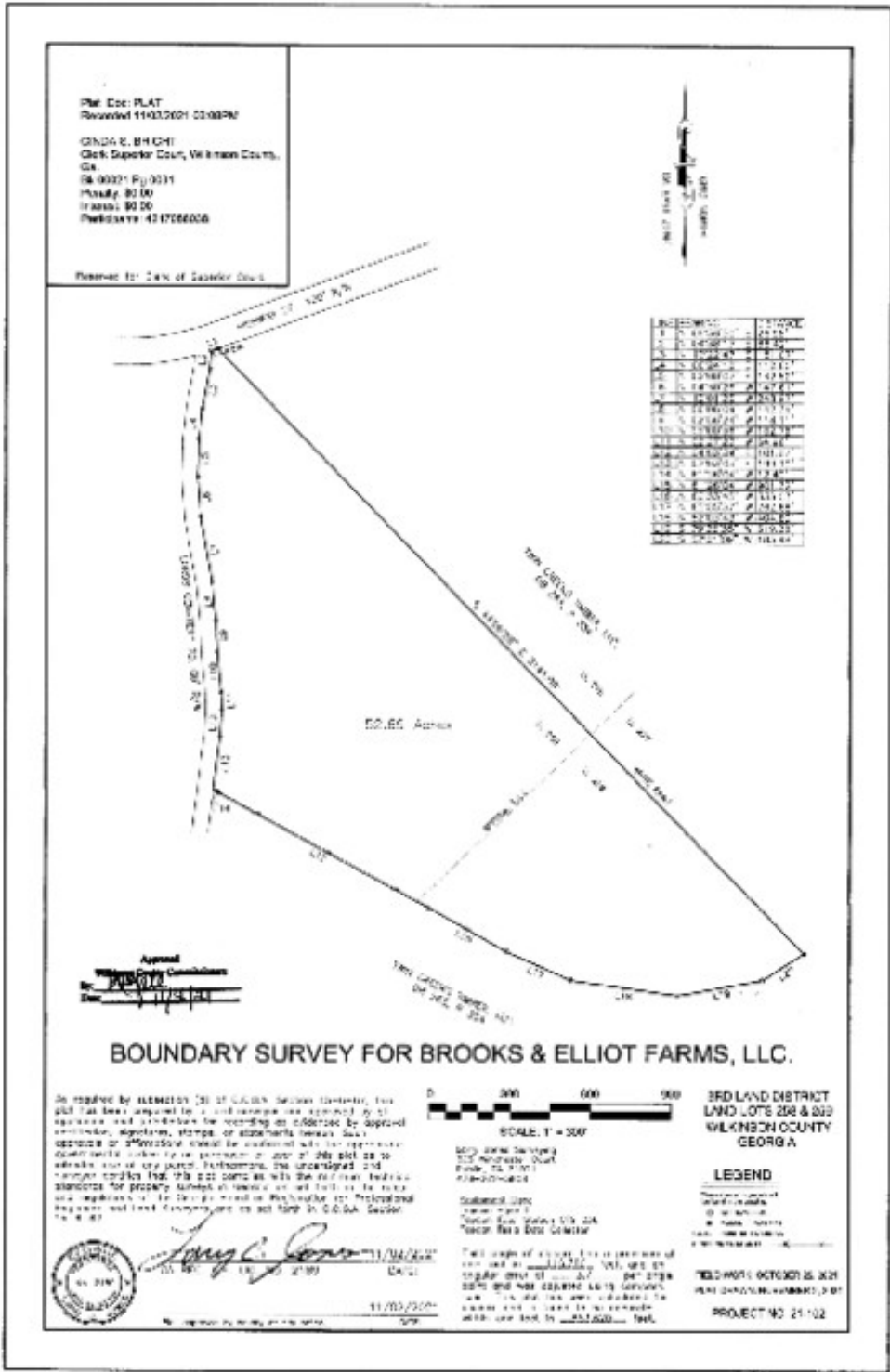
1207 Merchants Way Suite 101

M The information on this website was obtained from sources believed to be reliable. However, we do not warrant the accuracy or completeness of the information. We are not responsible for any errors or omissions.

Plat

Hillside Tract

Published on Plantation Properties & Land Investments, LLC (<https://landandrivers.com>)



Source URL: <https://landandrivers.com/property/hillside-tract>