

PLANTATION PROPERTIES

&

LAND INVESTMENTS, LLC

Smith Oaks

Smith Oaks is 90± acres located along HWY 441 between McIntyre and Milledgeville. This property is a rare find in today's market. The majority of the property is timbered in towering, mature hardwood trees and huge pine. The predominant species are red and white oak with hickory and dogwood sprinkled throughout. The terrain is gently rolling with low ridges and hillsides that fall to seasonal drains. 14± acres is a planted pine stand that was established on an old farm field and is ready to be thinned immediately, providing immediate cash flow from the property. Game sign is heavy across this property. Deer, turkey and wild hogs use it for cover and feed on the variety of hard mast produced on the property. If you are in the market for a tract that retains its natural, beautiful hardwood stands, you need to take a look at this property.



Price: \$315,000

Property Type: Land

Status: Sold

Street/Address: 0 HWY 441

City: McIntyre

State: Georgia

Zip code: 31054

County: wilkinson

Acreage: 90

Per Acre Price: \$3,500.00

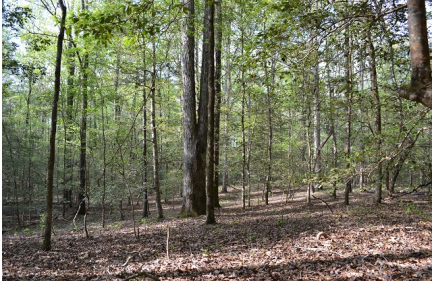
Phone Number: (478) 279-2148

Email: michael@landandrivers.com

Google Maps link: [View Larger Map](#)

Smith Oaks

Published on Plantation Properties & Land Investments, LLC (<https://landandrivers.com>)



Aerial Map

Smith Oaks

Published on Plantation Properties & Land Investments, LLC (<https://landanddrivers.com>)

Smith Oaks
Wilkinson County, Georgia, 90 AC +/-

PLANTATION PROPERTIES
LAND INVESTMENTS, LLC

0 500 1000 1500 2000ft

Michael Wilson
P: (478) 275-7148
michwil@landinvestments.com

1200 Merrihams Way, 8th fl, Stockton, CA 95210
Tel: (510) 865-1200
www.landinvestments.com

Source URL: <https://landanddrivers.com/property/smith-oaks>