



Schaffer Creek Farm

Schaffer Creek Farm is 974± acres northeast of Louisville, GA and west of Waynesboro, GA on the Jefferson & Burke County line. There are 370± acres in Jefferson County and 603± acres in Burke County, with frontage on Middleground Rd. and Little New York Rd. Schaffer Creek runs across the northern portion of the property with over a mile of creek frontage. This property is currently timbered in pine plantation, making it the perfect timber investment. It would also be a great recreational and hunting tract. The creek and hardwoods along the creek provide a key water and natural food source for wildlife; while the pine plantation offers excellent bedding areas. The road system throughout the property allows for easy access to all parts of the tract. In addition, the property could also be clear cut and easily converted to farmland, as it has good soil for farming and already has a projected pivot layout from BAS Irrigation. Schaffer Creek Farm is just 15 minutes from Louisville or Wrens, 20 minutes from Waynesboro, and 45 minutes from Augusta. Give us a call today to schedule a showing. 912.764.LAND(5263)



Price: \$2,581,100

Property Type: Land

Status: Sold

Street/Address: Middleground Rd. & Little New York Rd.

City: Wrens/Keysville

State: Georgia

Zip code: 30833

County: jefferson

Acreage: 974

Per Acre Price: \$2,650.00

Phone Number: 912.764.LAND(5263)

Email: info@LandandRivers.com

Schaffer Creek Farm

Published on Plantation Properties & Land Investments, LLC (<https://landandrivers.com>)

Google Maps link: [View Larger Map](#)



Schaffer Creek Farm

Published on Plantation Properties & Land Investments, LLC (<https://landandrivers.com>)



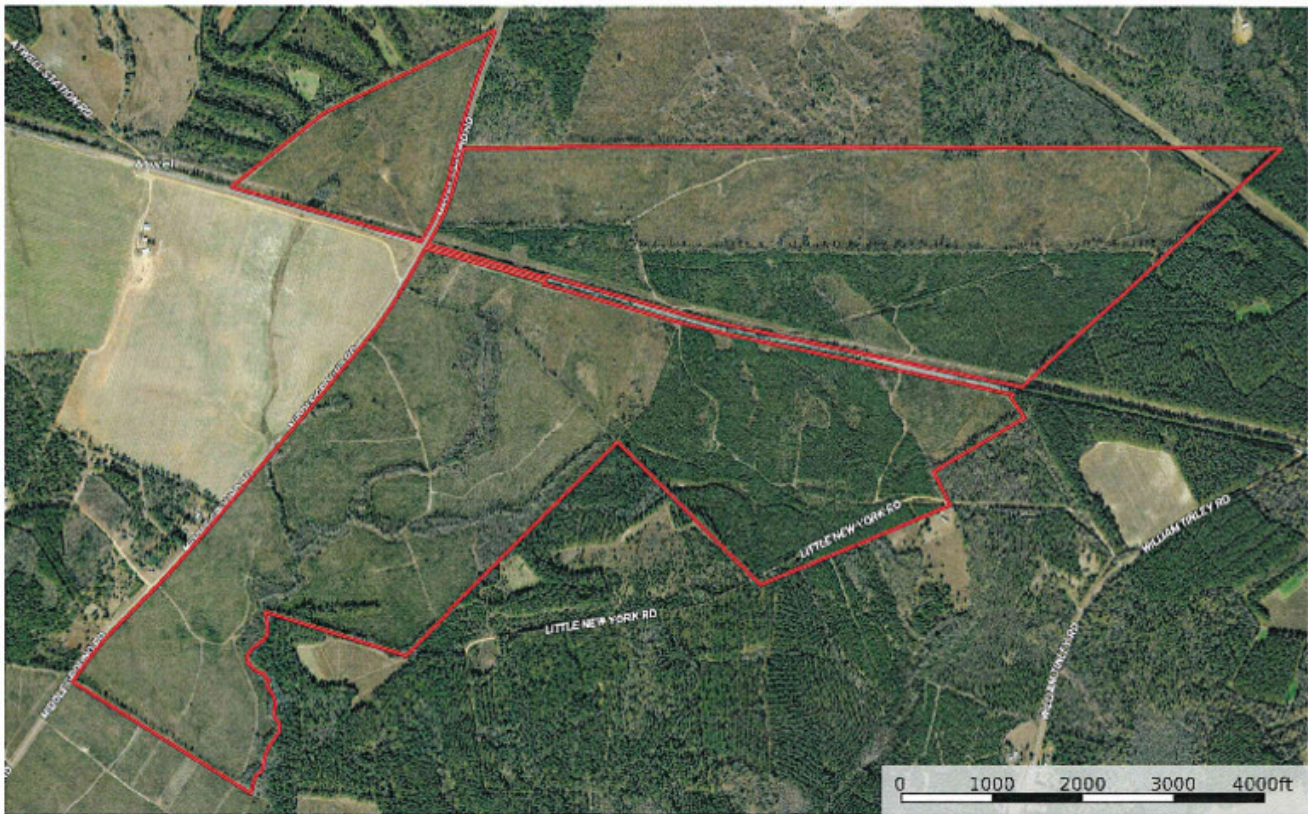
Aerial Map

Schaffer Creek Farm

Published on Plantation Properties & Land Investments, LLC (<https://landandrivers.com>)

974+/- acres Middleground Rd. & Little New York Rd.
Jefferson County, Burke County, Georgia, AC +/-

PLANTATION PROPERTIES
LAND INVESTMENTS, LLC



Tracking

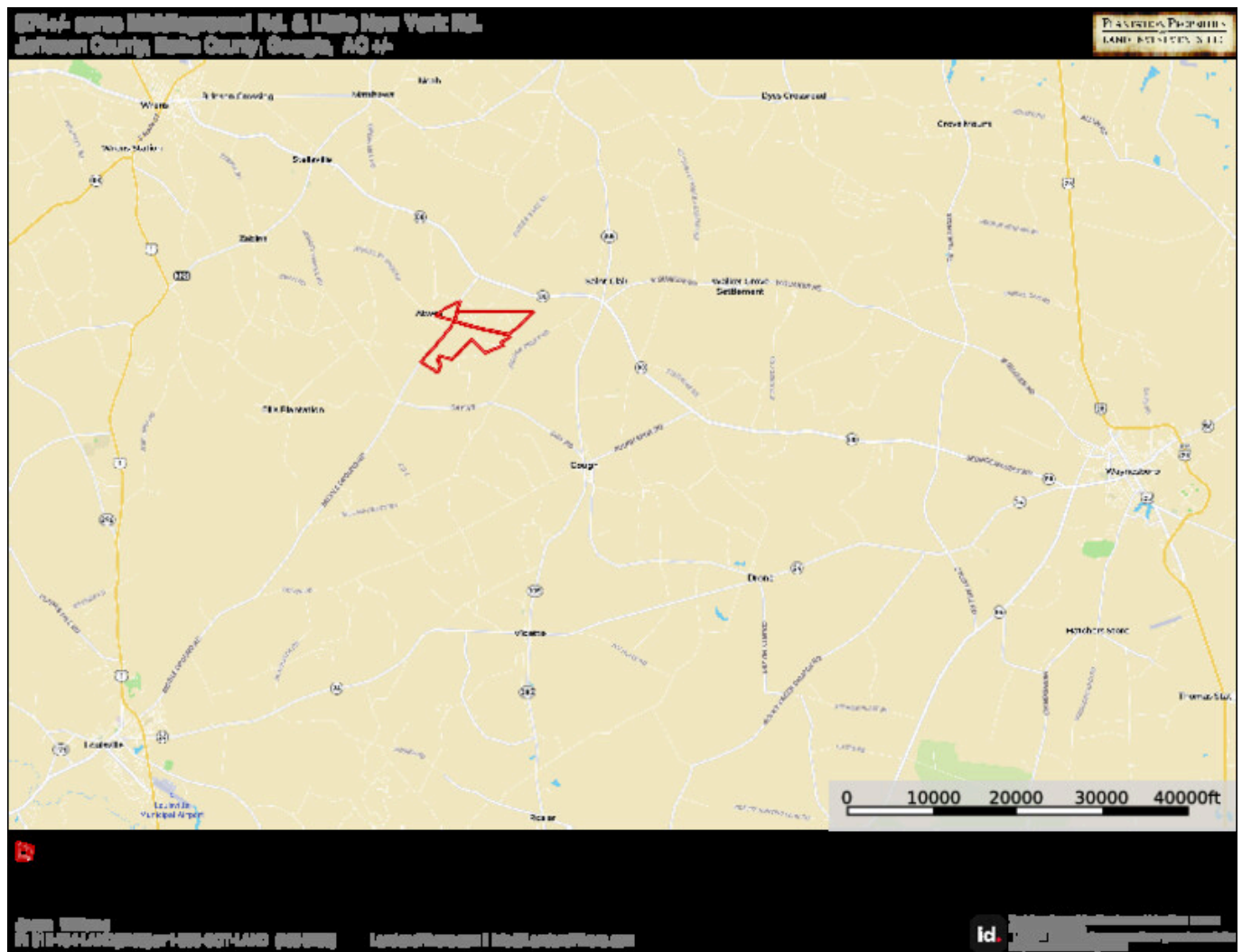
Jason Williams
P: 912-764-LAND (5265) or 1-855-COT-LAND (456-5265) | land@landandrivers.com | landandrivers.com

id The information provided here is for informational purposes only. It is not intended to be used as a basis for any legal or financial decision. Consult your attorney or accountant for more information.

Location Map

Schaffer Creek Farm

Published on Plantation Properties & Land Investments, LLC (<https://landandrivers.com>)



Soil Map

Published on Plantation Properties & Land Investments, LLC (<https://landandrivers.com>)



