



## Lost Island Lodge

- Welcome to Lost Island Lodge, 254 acres located in Echols County, Georgia, just 2 miles as the crow flies from the Georgia-Florida Line. This exceptional getaway farm features ample paved road frontage, 4 ponds, major creek frontage, gorgeous Live Oaks & Cypress Trees, towering creek bottom hardwoods, mature plantation-cut pines, planted food plots, & a fully updated, TOP SHELF lodge for friends and family!
- 
- This property is reminiscent of a Lost Island, as it is surrounded by tens of thousands of acres of privately owned timberland. As one could imagine, the recreational opportunities are off the charts. Land in Echols County rarely comes up for sale, especially a farm of this caliber. You will not find another property such as this anywhere in the county, or the State of Georgia for that matter.
- 
- This farm boasts over a mile of Toms Creek frontage. Fishing & duck hunting along the creek have provided the current owners many memories over the past few years. There are several large open areas along the creek which are proven duck holes. There is a large meadow on the bank of the creek, which has been implemented by the current owners; and is known as one of the best fishing spots around by folks in the county.
- 
- The Deer & Turkey population on this farm is strong. It is not rare to hear multiple turkeys gobbling on any given spring morning while sitting on the porch of the lodge. There have been upwards of 25 turkeys seen in a food plot at one time. The 4 large food-plots hold & attract a significant amount of deer to this property. Black bears are known to travel through the property from time to time as well. There is an enhanced internal road system in place, which allows easy access to all parts of the property. 3 separate gated entrances are in place along Tom Creek Road.
- 
- There are 30 acres of pristine plantation-cut pines, which has been utilized & maintained in recent years as quail woods.
-

## Lost Island Lodge

Published on Plantation Properties & Land Investments, LLC (<https://landandrivers.com>)

---

- As you enter the gate of the farm, a large open pasture greets you with aesthetic views consisting of 100+ year old Live Oaks surrounding the main lodge. There are 4 picturesque ponds, of which 2 are stocked with bass. These ponds provide even more water features to this already water-rich property.
- 
- There are several nice out-buildings scattered around the property, such as a new barn with walk in deer cooler, lookout tower, RV pad w/electric, and a cook shack with Viking gas stove & oven.
- 
- The 2,853 sq ft lodge is truly remarkable. Simply put, you would be hard pressed to replicate it today.
- 
- With 4 bedrooms, 3 full bathrooms, the lodge provides ample space for relaxation and comfort. The wood work on the inside of the lodge can only be appreciated in person. The wrap around porch allows friends and family to see all that this farm has offer from every direction. There are several lookout areas shooting off of the lodge for elevated views of the property.
- 
- Significant updates to the lodge have been made over the years, which include, new HVAC, duct work, wood floors, and much more. The kitchen & bathrooms have been fully updated with new appliances and granite countertops. Lastly, a new foundation and leveling blocks have been implemented.
- 
- Lost Island Lodge is one of the most naturally beautiful farms we've had the opportunity to represent. The ability to escape to a place like this from the big cities in these uncertain times will be appreciated from the time you first step foot onto the property. Unwinding in a top shelf lodge on ones own 254 pristine acres to enjoy is what most people dream of. Give us a call today to schedule a showing!

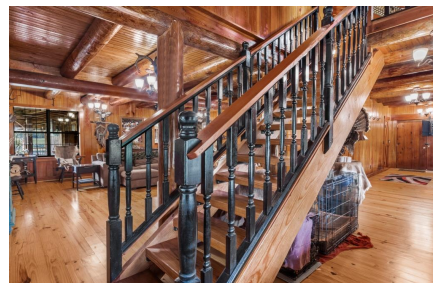
## Lost Island Lodge

Published on Plantation Properties & Land Investments, LLC (<https://landandrivers.com>)

---

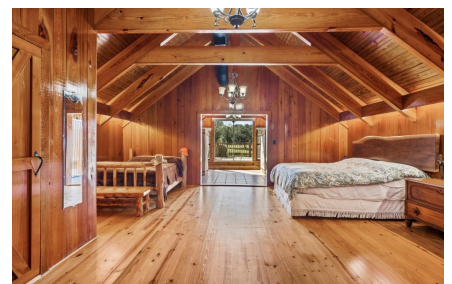
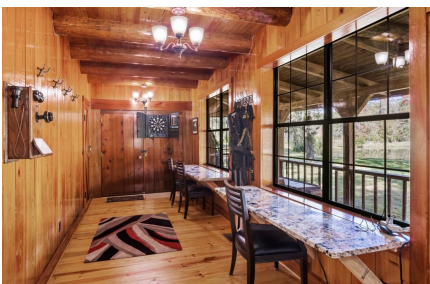


**Price:** \$1,800,000  
**Property Type:** Residential  
**Status:** Sold  
**Street/Address:** 1439 Toms Creek Road  
**City:** FARGO  
**State:** Georgia  
**Zip code:** 31631  
**County:** echols  
**Acreage:** 255  
**Per Acre Price:** \$0.00  
**Phone Number:** 478.972.9189  
**Email:** [Cade@LandandRivers.com](mailto:Cade@LandandRivers.com)  
**Google Maps link:** [View Larger Map](#)



# Lost Island Lodge

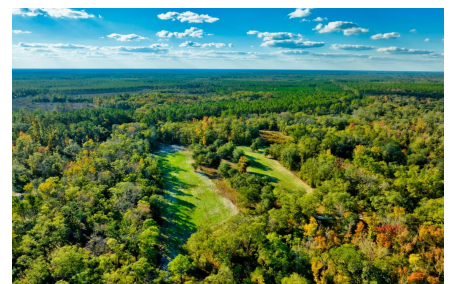
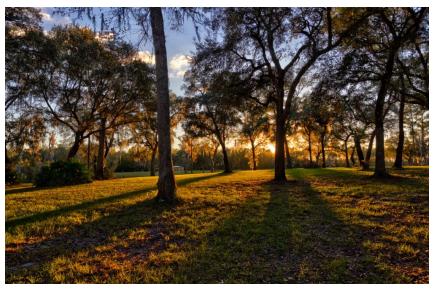
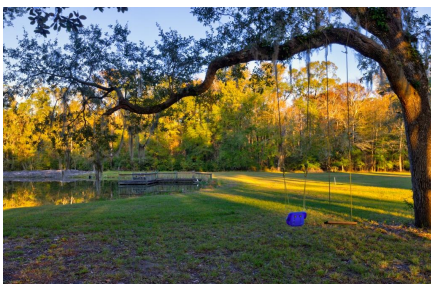
Published on Plantation Properties & Land Investments, LLC (<https://landandrivers.com>)



# Lost Island Lodge

Published on Plantation Properties & Land Investments, LLC (<https://landandrivers.com>)

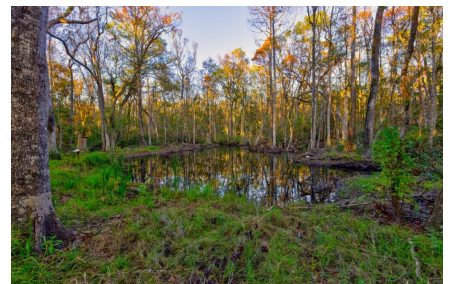
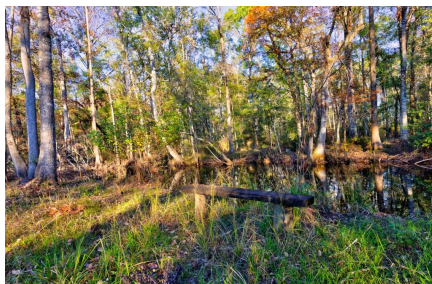
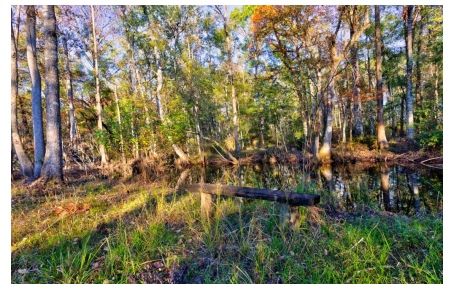
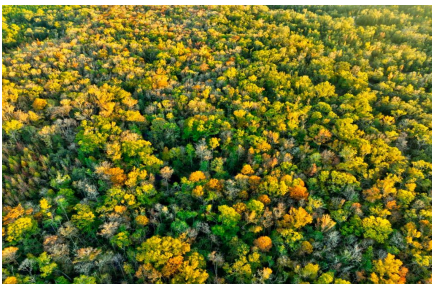
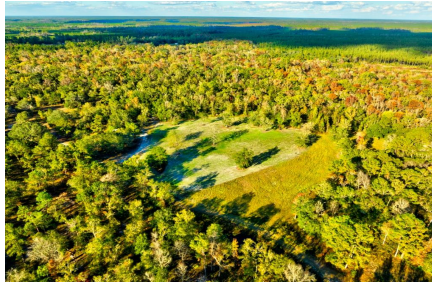
---



# Lost Island Lodge

Published on Plantation Properties & Land Investments, LLC (<https://landandrivers.com>)

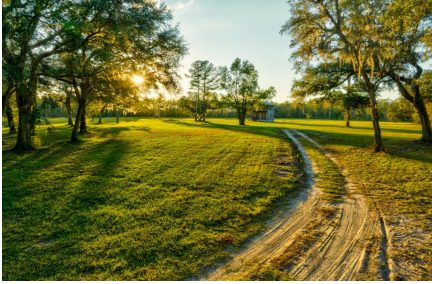
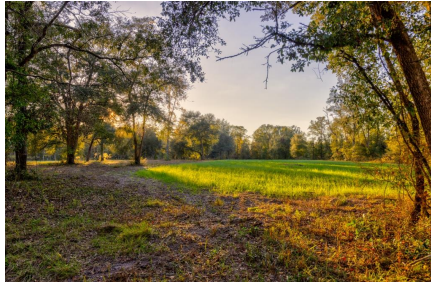
---



## Lost Island Lodge

Published on Plantation Properties & Land Investments, LLC (<https://landandrivers.com>)

---



**Source URL:** <https://landandrivers.com/property/lost-island-lodge>