



Vidalia Valley Farm

Vidalia Valley Farm - Irrigated Farmland in Toombs County!! Located on US Hwy 1 and Harden Chapel Road in Lyons, GA this farm is 405± acres with 248± acres under irrigation and 56± acres of dryland. It features four Zimmatic pivots, a 6" 30Hp well, 2 ponds, and a 38,000 sq ft farm shed/shop. Vidalia Valley Farm is 8 miles southeast of Vidalia, 18 miles from Reidsville, and just 20 min. from I-16 where you can get to Macon in 1.5 hours or Savannah in just over 1.5 hours. Contact us today to arrange a showing. 912.764.LAND(5263)



Price: \$3,509,955

Property Type: Land

Status: Sold

Street/Address: 227 Harden Chapel Rd. & US Hwy 1 N

City: Lyons

State: Georgia

Zip code: 30436

County: toombs

Acreage: 405

Per Acre Price: \$0.00

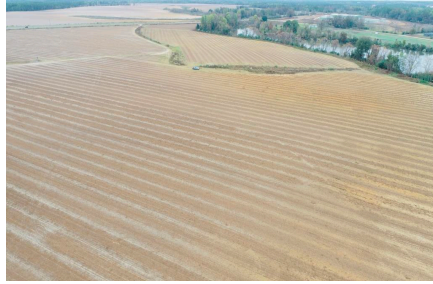
Phone Number: 912.764.LAND(5263)

Email: info@LandandRivers.com

Google Maps link: [View Larger Map](#)

Vidalia Valley Farm

Published on Plantation Properties & Land Investments, LLC (<https://landandrivers.com>)



Vidalia Valley Farm

Published on Plantation Properties & Land Investments, LLC (<https://landandrivers.com>)



Vidalia Valley Farm

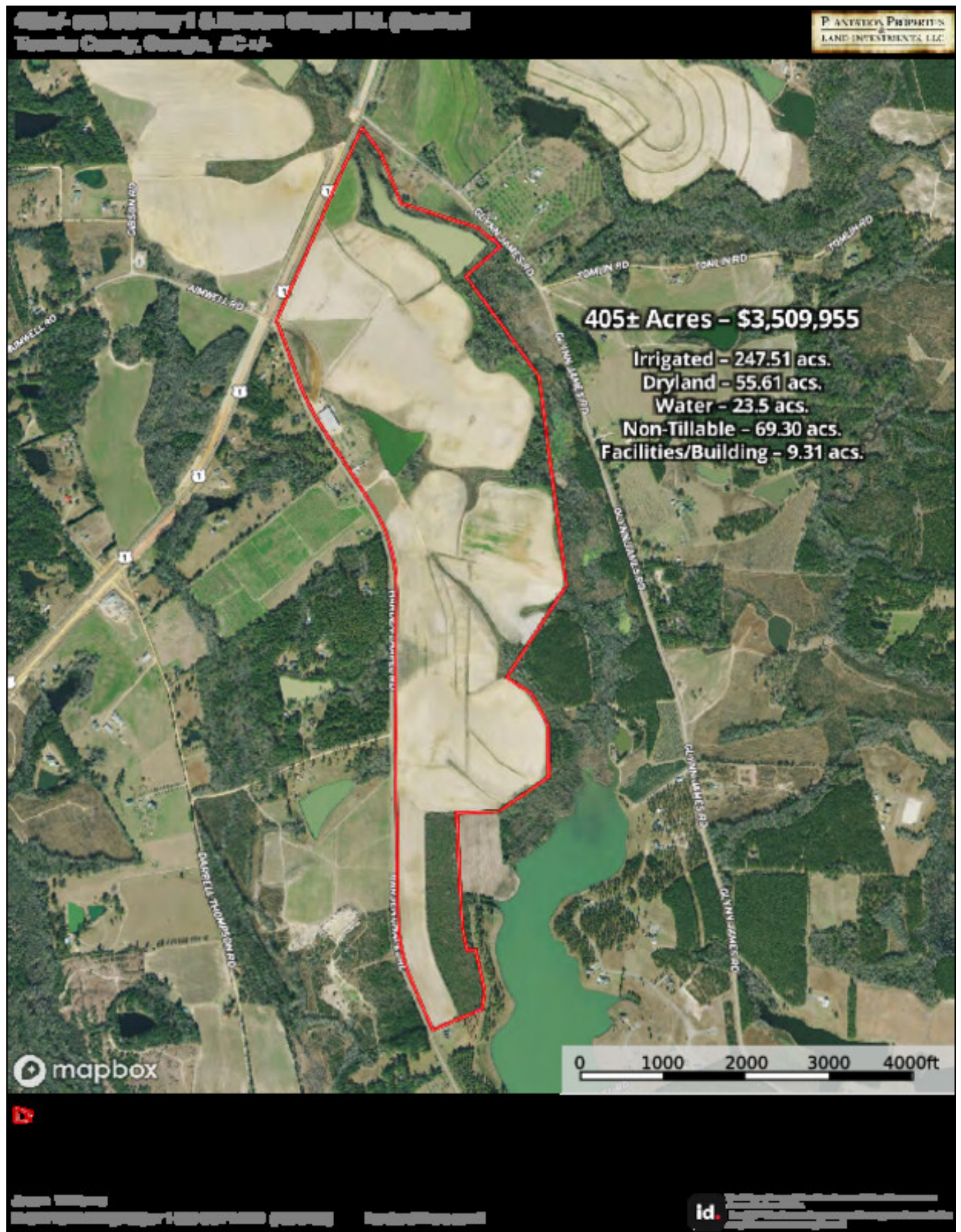
Published on Plantation Properties & Land Investments, LLC (<https://landandrivers.com>)



Aerial Map

Vidalia Valley Farm

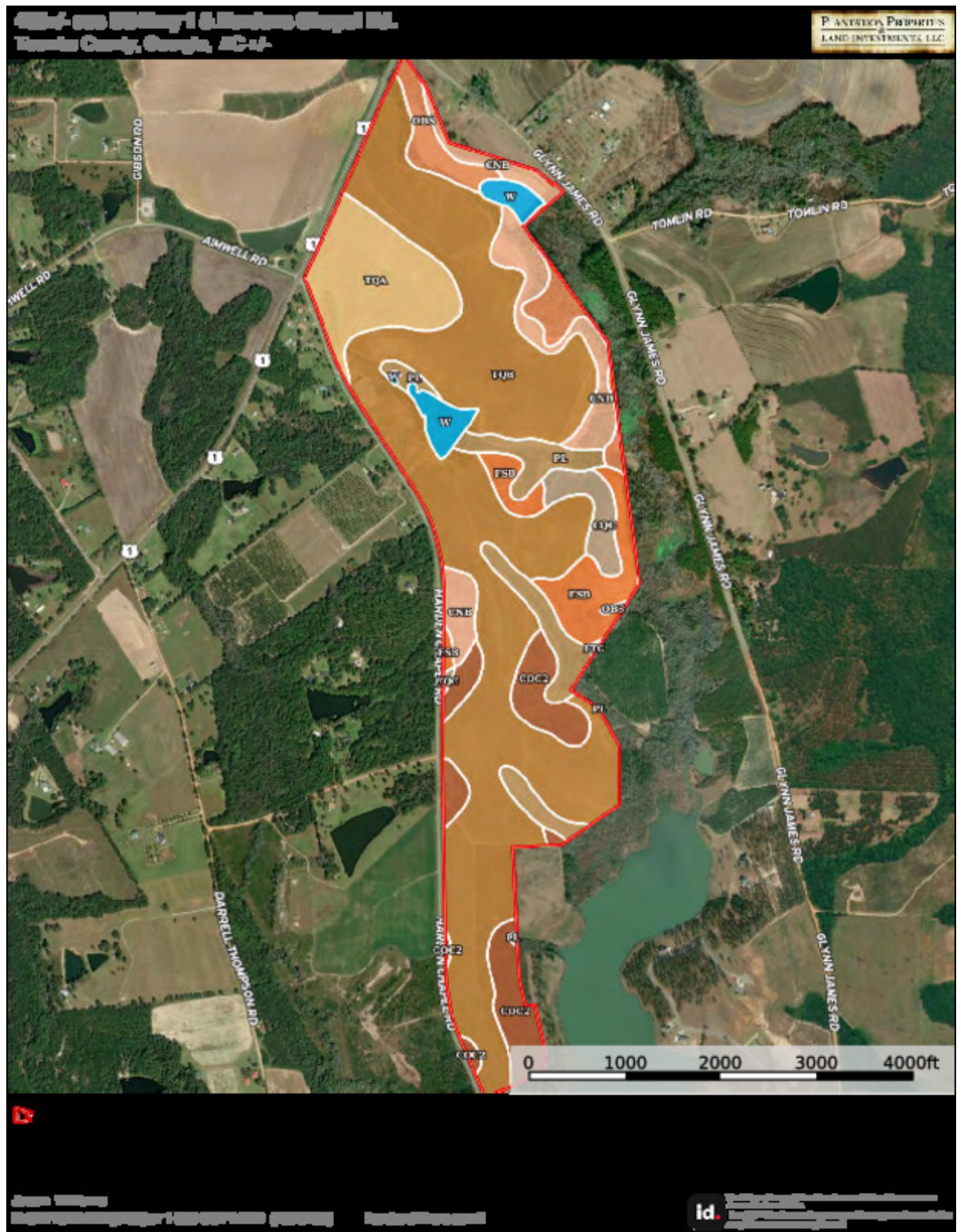
Published on Plantation Properties & Land Investments, LLC (<https://landanddrivers.com>)



Soil Map

Vidalia Valley Farm

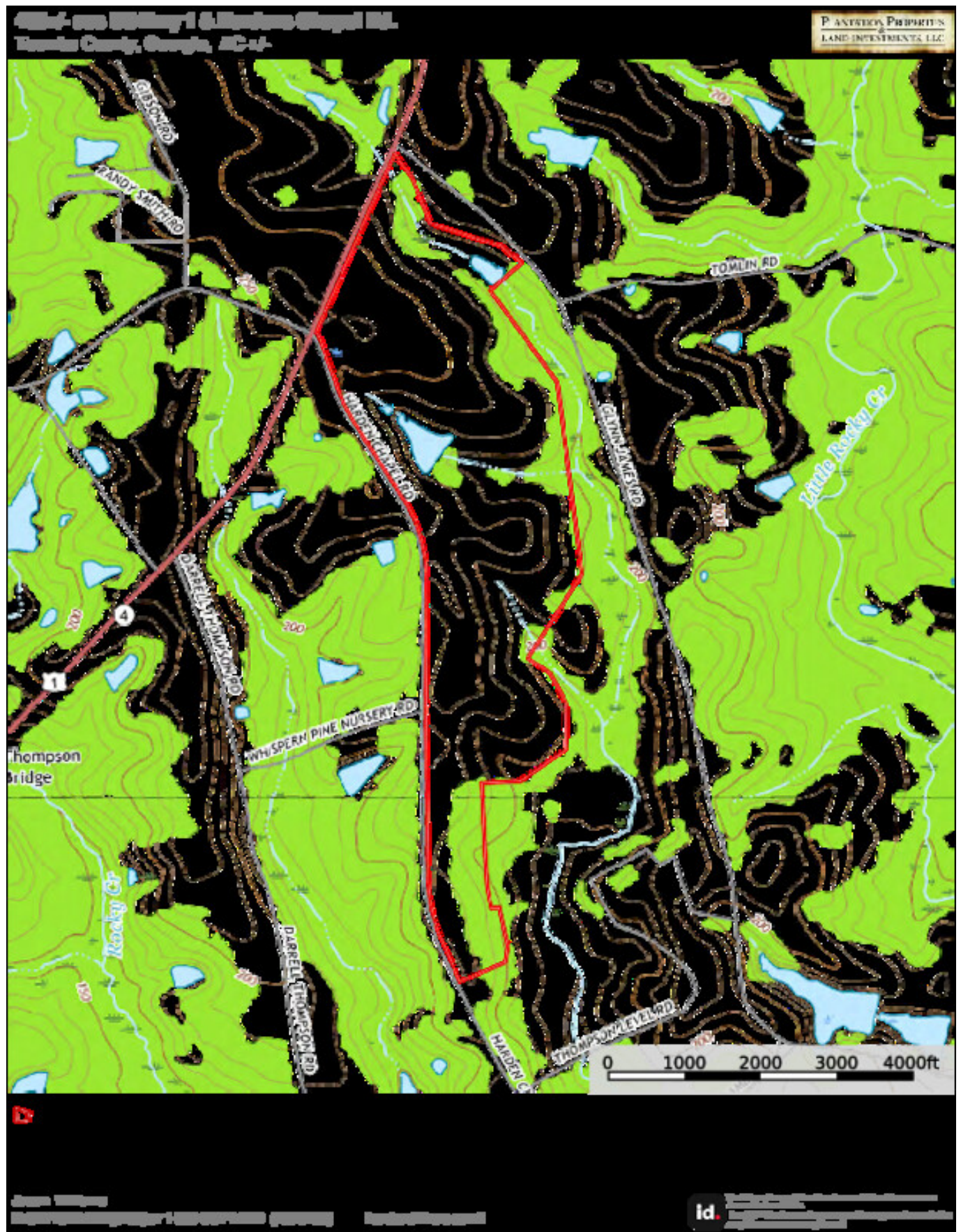
Published on Plantation Properties & Land Investments, LLC (<https://landanddrivers.com>)



Topo Map

Vidalia Valley Farm

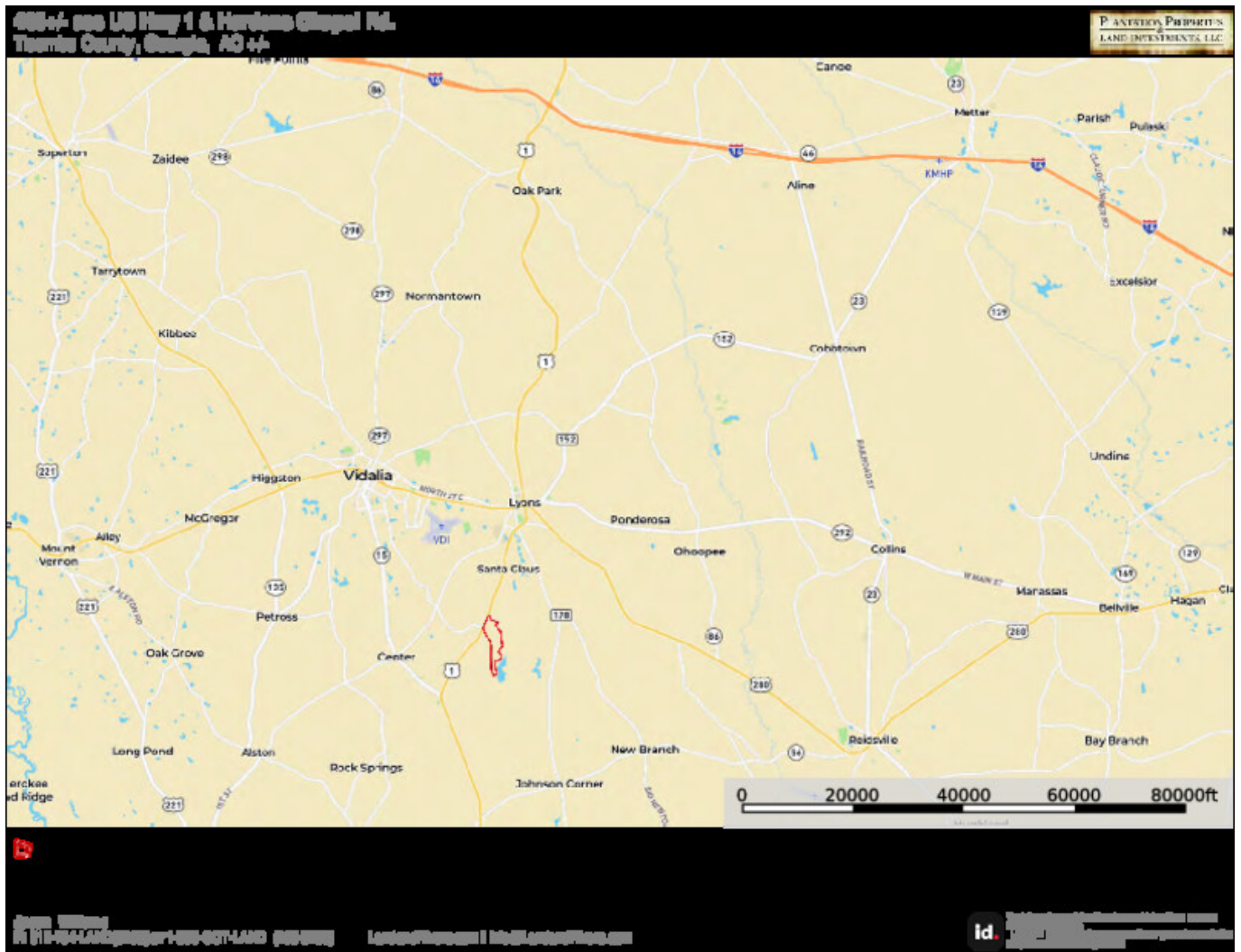
Published on Plantation Properties & Land Investments, LLC (<https://landandrivers.com>)



Location Map

Vidalia Valley Farm

Published on Plantation Properties & Land Investments, LLC (<https://landanddrivers.com>)



Source URL: <https://landanddrivers.com/property/vidalia-valley-farm>