



## Twin Creeks

Explore the potential of this versatile 448± acre Burke County, Georgia property featuring merchantable pine and hardwood timber, frontage along Beaverdam and Brier Creeks, paved road frontage, food plots, and much more! The paved road frontage along Story Mill Rd. and excellent internal road system allows easy access throughout the property. The recreational opportunities on this property are endless. Enjoy hunting, fishing, ATV riding, and much more! In addition to fishing, the creeks provide a key water source for deer, ducks, turkey, and other wildlife. The hardwoods and pine plantation provide wildlife with natural bedding and forage areas, and combined with the food plots currently in place, this property is sure to attract loads of wildlife. Ideal timber investment combined with recreational opportunities make Twin Creeks a standout opportunity in the heart of Georgia! This property would also be a perfect place to build a cabin and make it a weekend getaway! It is located 7 miles from Waynesboro, GA and 28 miles from Augusta. Give us a call today to schedule a showing 912.764.LAND (5263)



**Price:** \$1,800,000  
**Property Type:** Land  
**Status:** For Sale  
**Street/Address:** Story Mill Road & Spread Oak Rd.  
**City:** Keysville  
**State:** Georgia  
**Zip code:** 30816  
**County:** burke  
**Acreage:** 448  
**Per Acre Price:** \$4,017.00  
**Phone Number:** 912.764.LAND(5263)  
**Email:** [info@LandandRivers.com](mailto:info@LandandRivers.com)

## Twin Creeks

Published on Plantation Properties & Land Investments, LLC (<https://landandrivers.com>)

---

**Google Maps link:** [View Larger Map](#)



## Timber Map

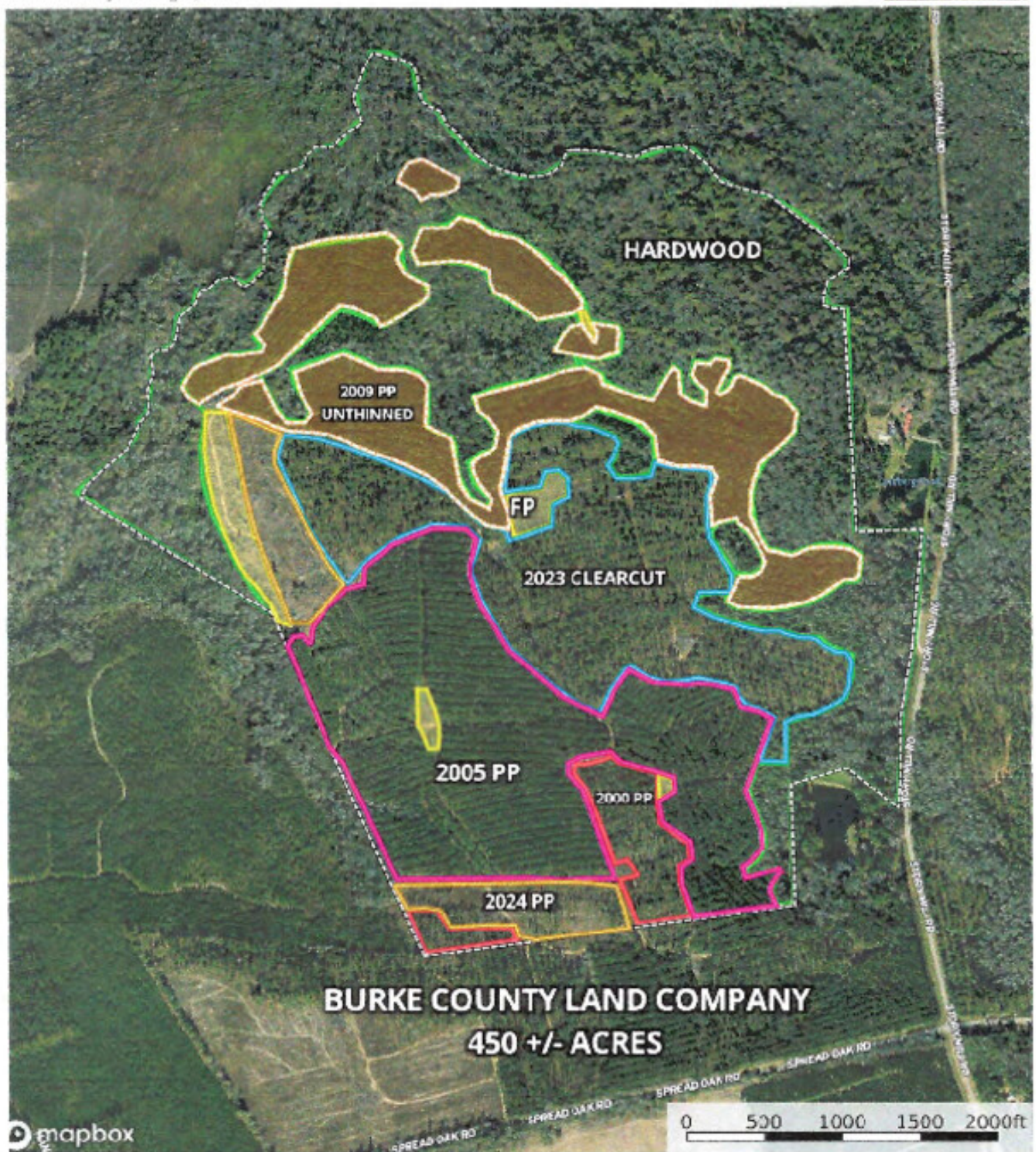


## Twin Creeks

Published on Plantation Properties & Land Investments, LLC (<https://landandrivers.com>)

Burke County Land Company  
Burke County, Georgia, 450 AC +/-

PLANTATION PROPERTIES  
&  
LAND INVESTMENTS, LLC



2009 Planted Pine 2005 Planted Pine 2023 Clearcut Road Right Boundary 1 Roadview 2024 Planted Pine 2000 Planted Pine

Jeremy Coulter

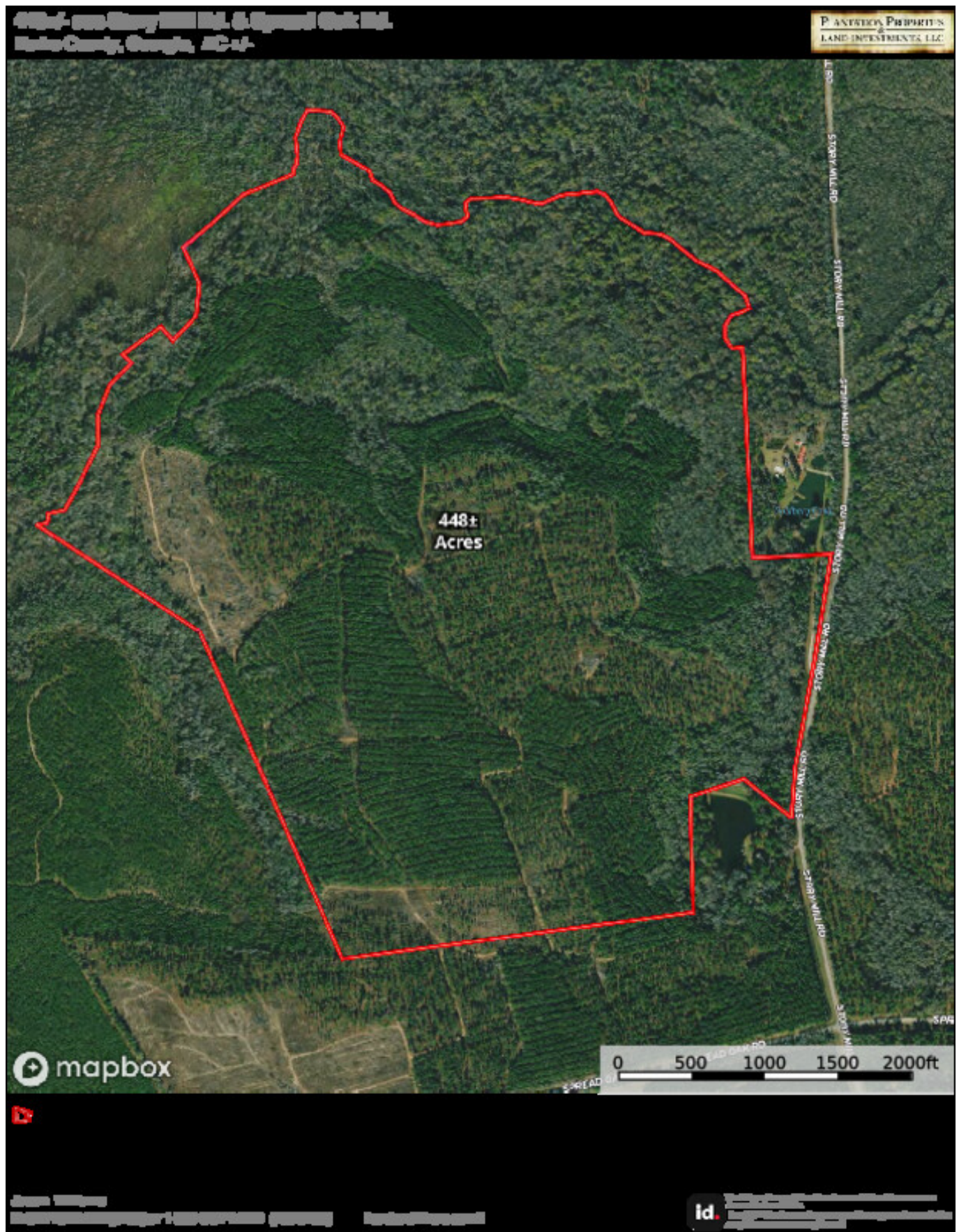
**id.** This information is provided for informational purposes only and does not constitute an offer of securities. Please consult your broker or attorney for more information.

## Aerial Map



## Twin Creeks

Published on Plantation Properties & Land Investments, LLC (<https://landandrivers.com>)

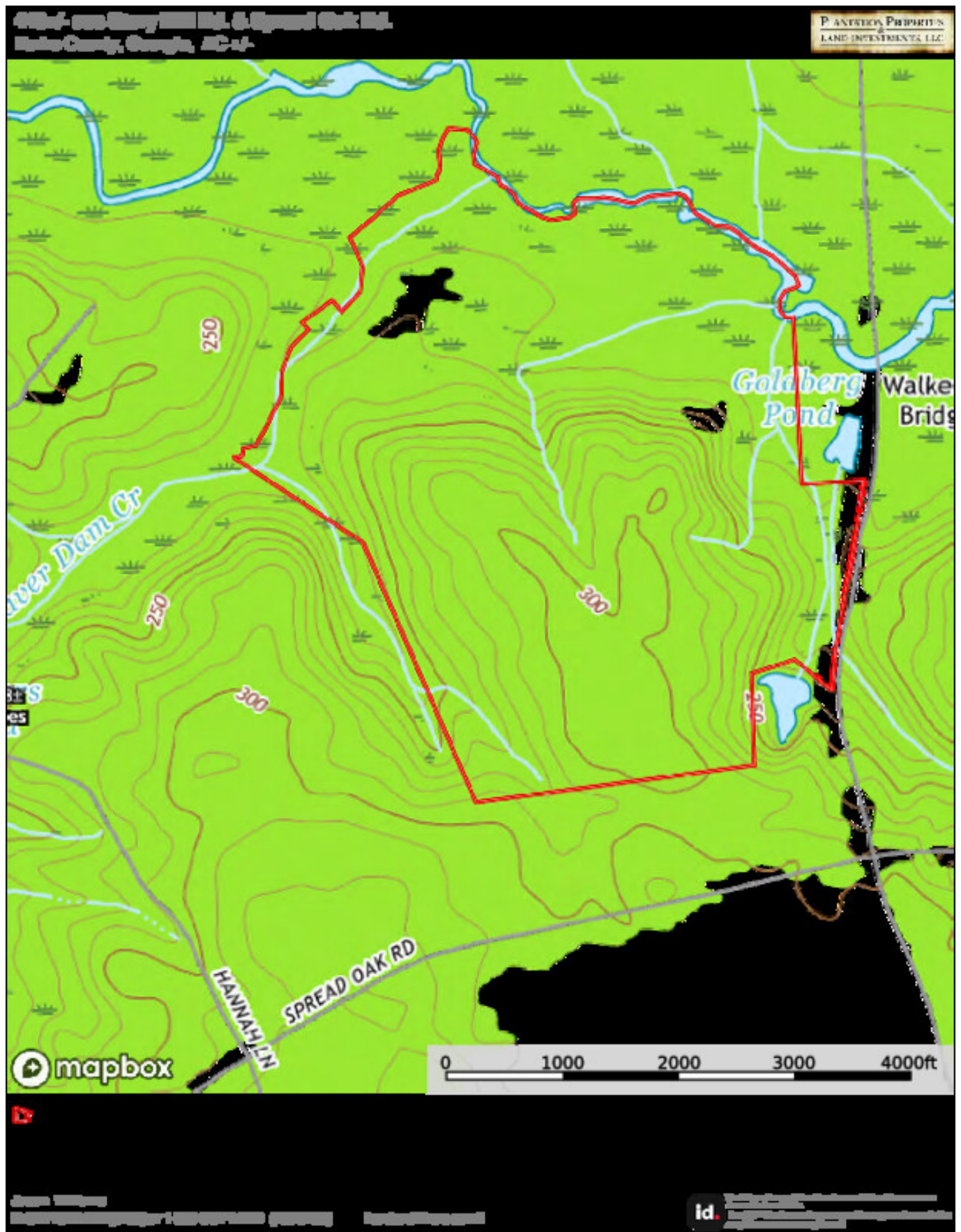


## Topo Map



## Twin Creeks

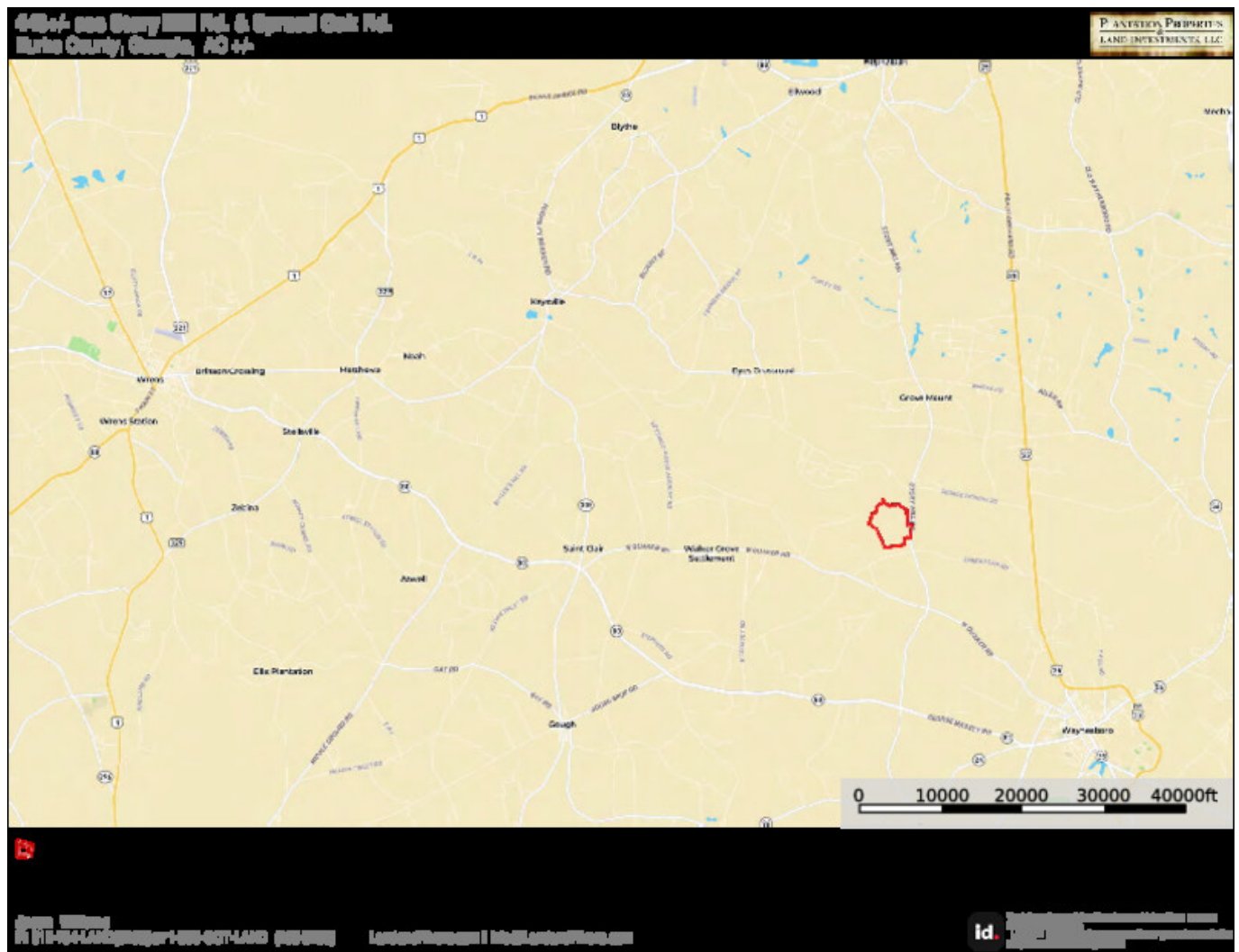
Published on Plantation Properties & Land Investments, LLC (<https://landandrivers.com>)



## Location Map

## Twin Creeks

Published on Plantation Properties & Land Investments, LLC (<https://landanddrivers.com>)



Source URL: <https://landanddrivers.com/property/twin-creeks>