

Five Chop Farm

Published on Plantation Properties & Land Investments, LLC (<https://landandrivers.com>)



Five Chop Farm

Five Chop Farm is 82± acres northeast of Statesboro, GA on Five Chop Rd. & Hwy 24. This farm features 57± acres of cultivated land with the remainder being natural pine and hardwoods, along the entire eastern property line. Ideal property if you are looking for a new place to farm, build a home, or potential development. Located just 5 miles from Statesboro, 1 hour from Savannah, and 1.5 hours from Augusta. Call us today to schedule a showing. 912.764.LAND(5263)



Price: \$1,640,000

Property Type: Land

Status: For Sale

Street/Address: Hwy 24 & Five Chop Rd.

City: Statesboro

State: Georgia

Zip code: 30461

County: bulloch

Acreage: 82

Per Acre Price: \$20,000.00

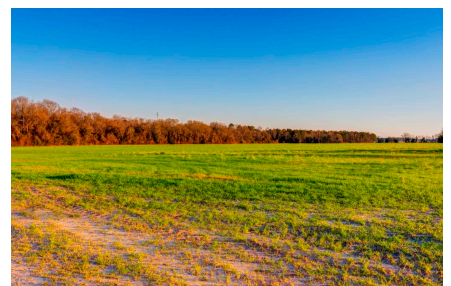
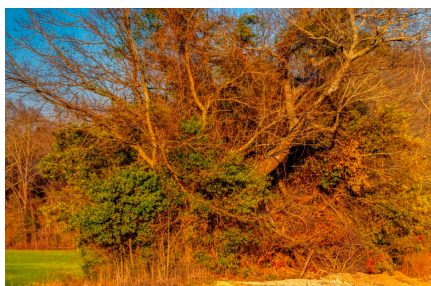
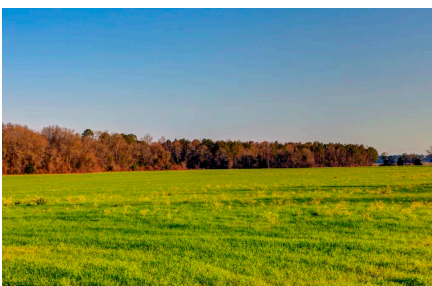
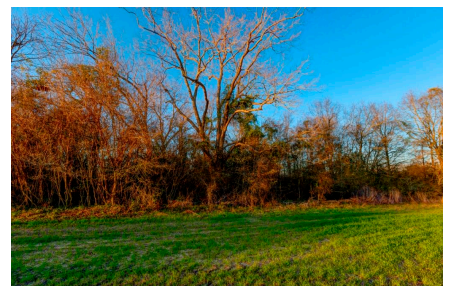
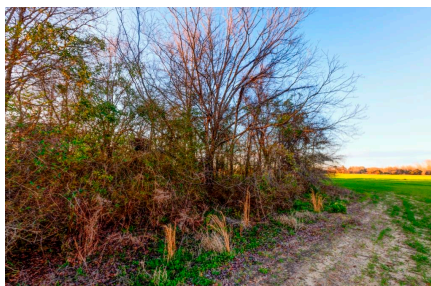
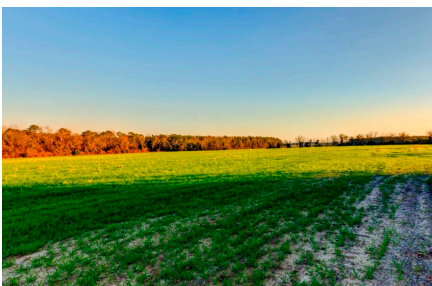
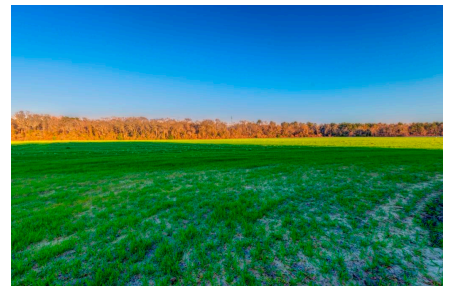
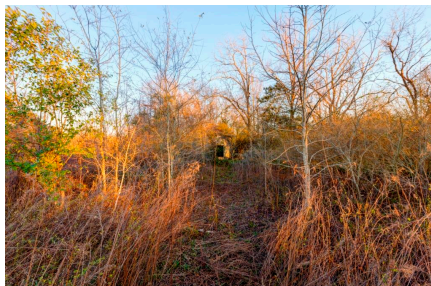
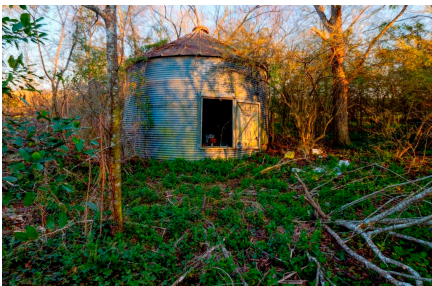
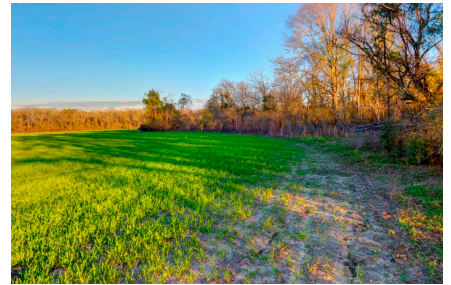
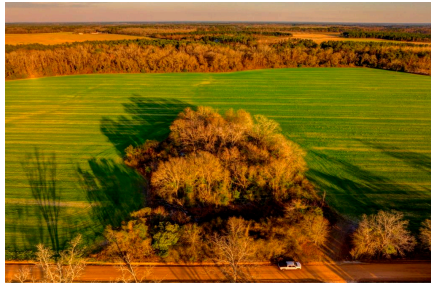
Phone Number: 912.764.LAND(5263)

Email: info@LandandRivers.com

Google Maps link: [View Larger Map](#)

Five Chop Farm

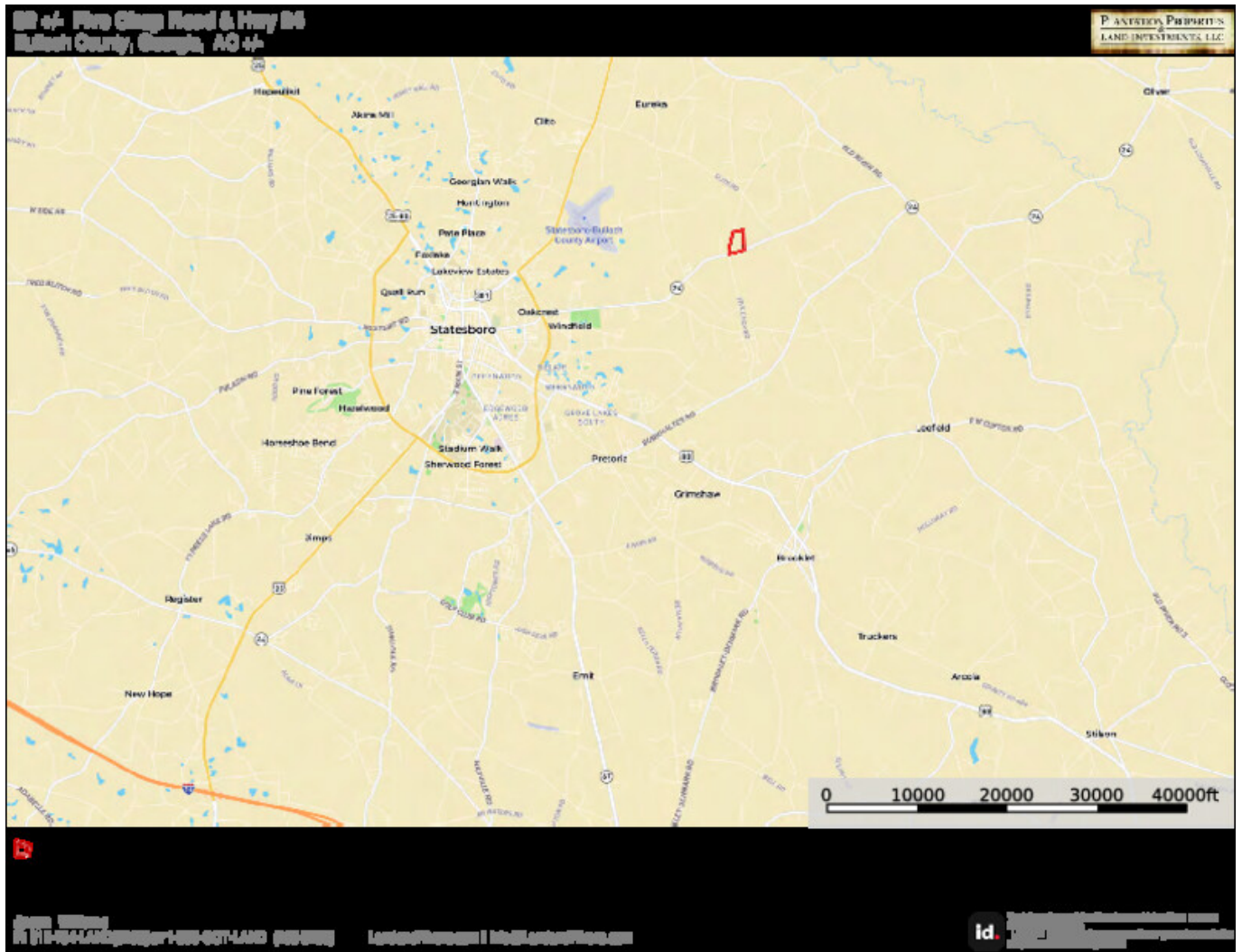
Published on Plantation Properties & Land Investments, LLC (<https://landanddrivers.com>)



Aerial Map



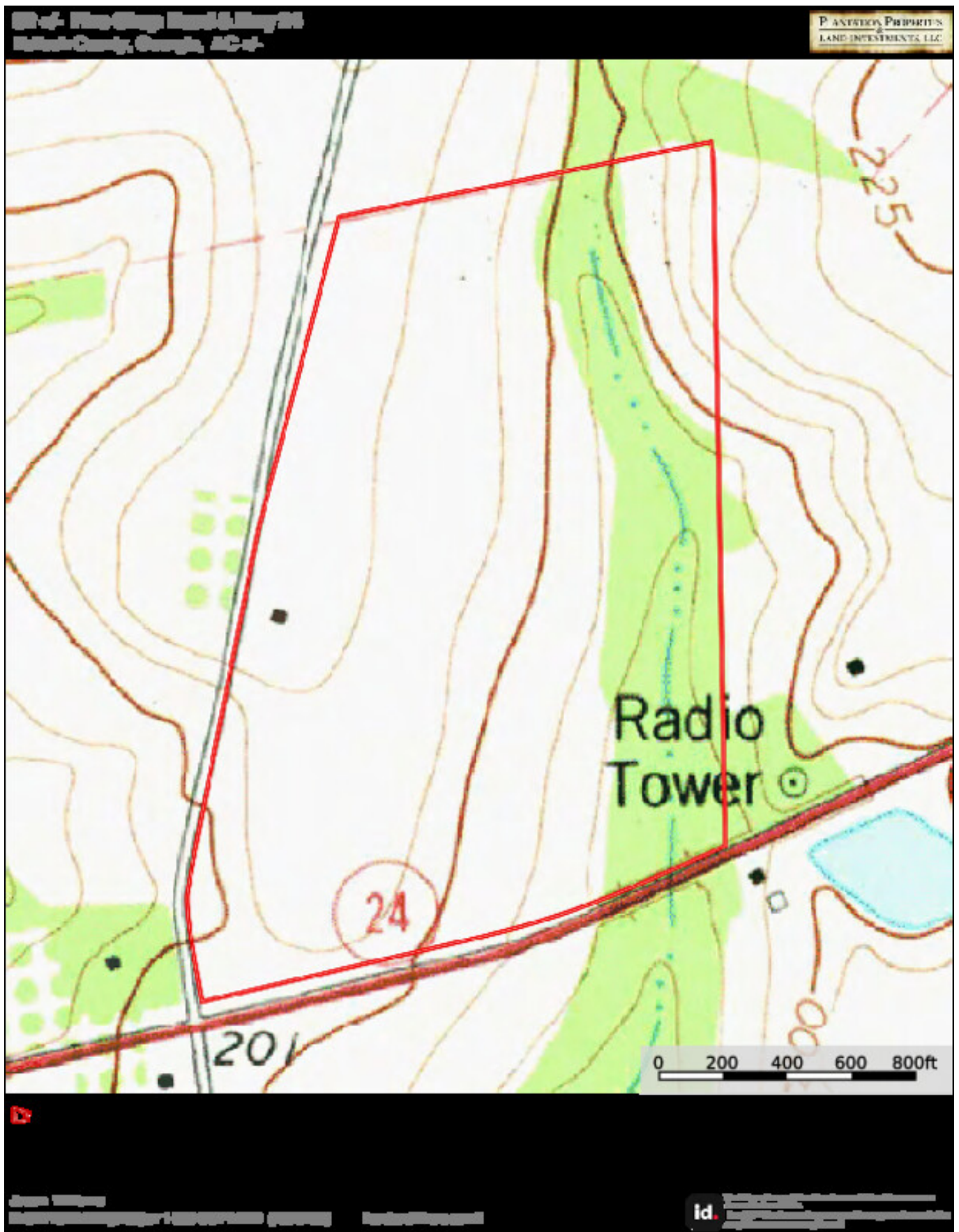
Location Map



Topo Map

Five Chop Farm

Published on Plantation Properties & Land Investments, LLC (<https://landandrivers.com>)



Soil Map

Five Chop Farm

Published on Plantation Properties & Land Investments, LLC (<https://landanddrivers.com>)



Source URL: <https://landanddrivers.com/property/five-chop-farm-0>