



Ohoopee Chicken Farm

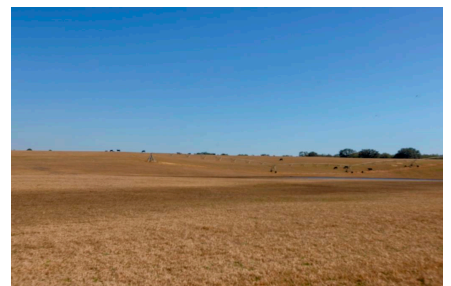
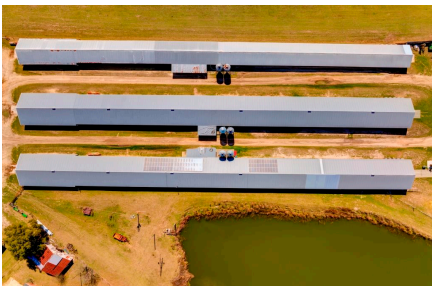
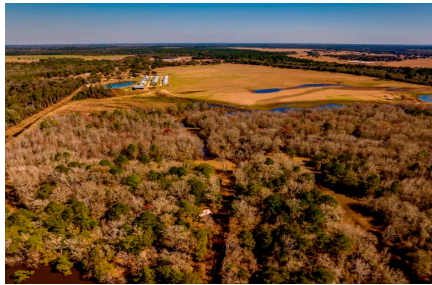
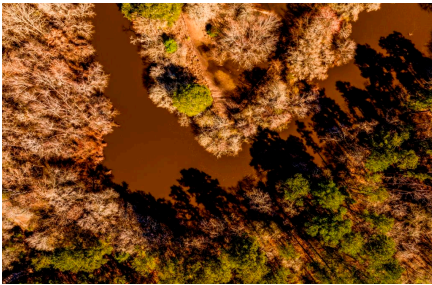
- 196 acres in Tattnall Co. with Ohoopee River Frontage, Irrigated AcreageHomes, Chicken Houses, Hay Barn, and Utility Shed. Irrigation & Farm Equipment Included.
- MORE DETAILS COMING SOON!



Price: \$4,500,000
Property Type: Land
Status: For Sale
Street/Address: 1110 Hwy 280 W.
City: Reidsville
State: Georgia
Zip code: 30453
County: tattnall
Acreage: 196
Per Acre Price: \$0.00
Phone Number: 912.764.LAND(5263)
Email: info@LandandRivers.com
Google Maps link: [View Larger Map](#)

Ohoopee Chicken Farm

Published on Plantation Properties & Land Investments, LLC (<https://landanddrivers.com>)



Ohoopee Chicken Farm

Published on Plantation Properties & Land Investments, LLC (<https://landandrivers.com>)



Ohoopee Chicken Farm

Published on Plantation Properties & Land Investments, LLC (<https://landandrivers.com>)



Aerial Map

Ohoopee Chicken Farm

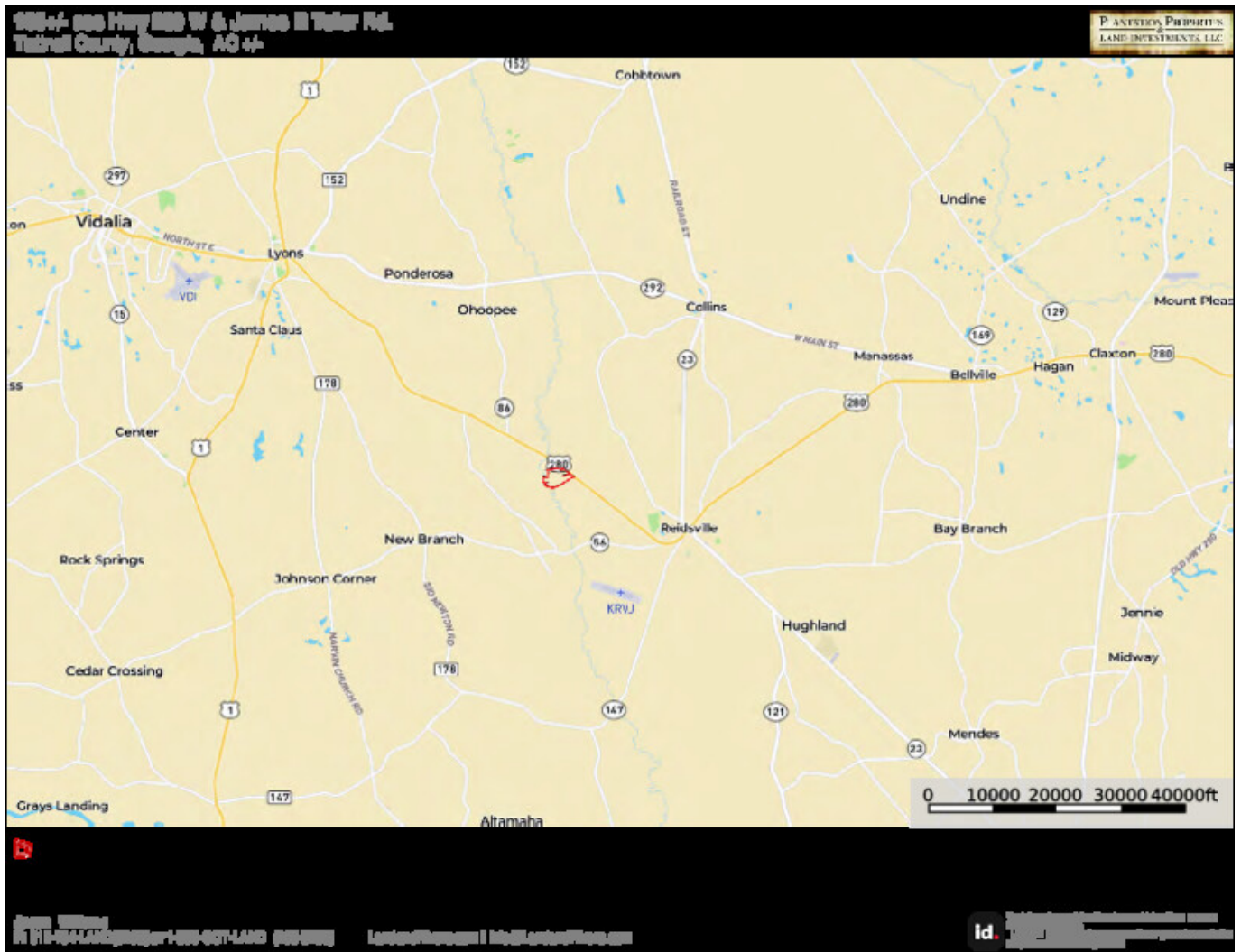
Published on Plantation Properties & Land Investments, LLC (<https://landanddrivers.com>)



Location Map

Ohoopee Chicken Farm

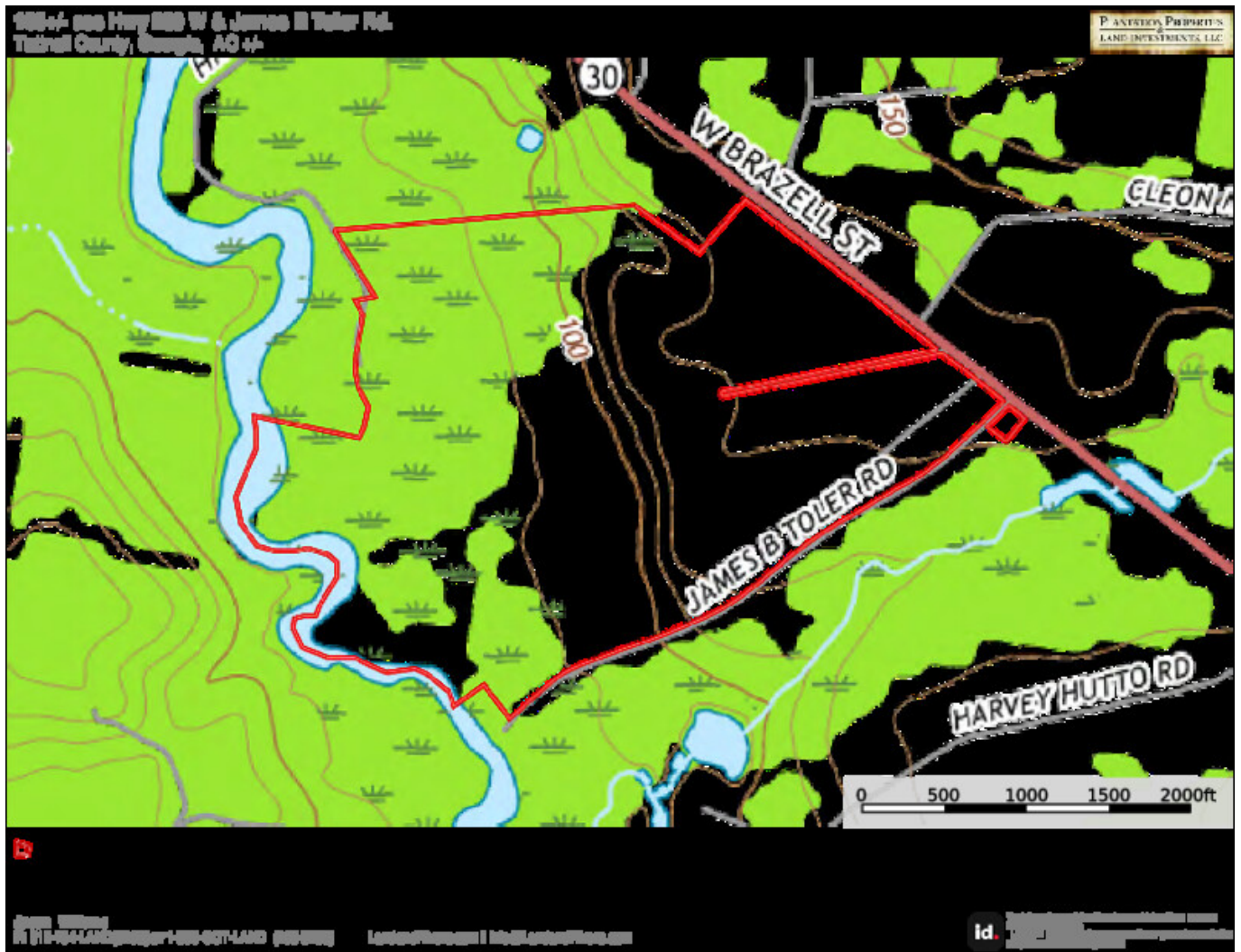
Published on Plantation Properties & Land Investments, LLC (<https://landandrivers.com>)



Topo Map

Ohoopee Chicken Farm

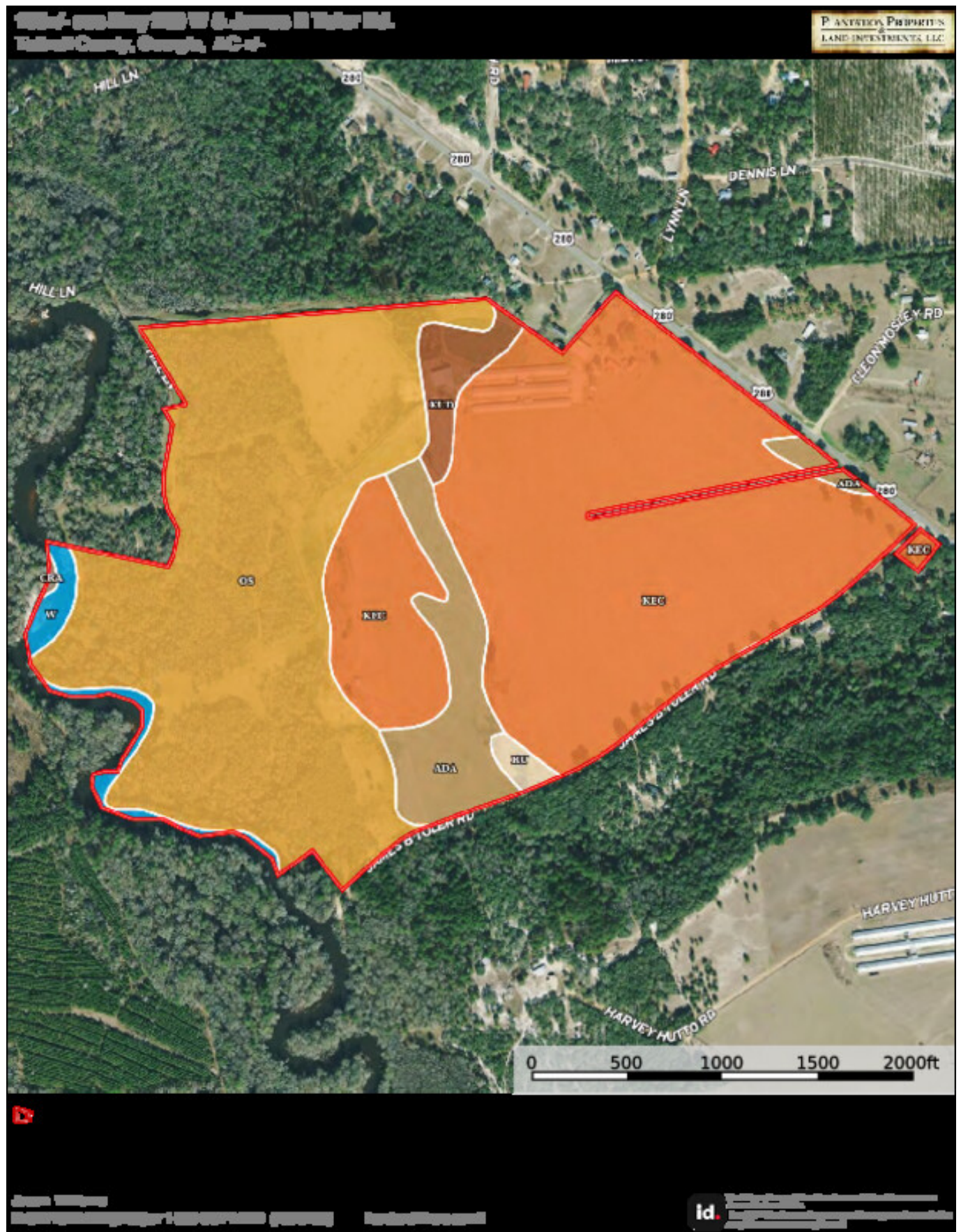
Published on Plantation Properties & Land Investments, LLC (<https://landandrivers.com>)



Soil Map

Ohoopee Chicken Farm

Published on Plantation Properties & Land Investments, LLC (<https://landanddrivers.com>)



Source URL: <https://landanddrivers.com/property/ohoopee-chicken-farm>