

Westside Acres - Tract 2

Published on Plantation Properties & Land Investments, LLC (<https://landandrivers.com>)



Westside Acres - Tract 2

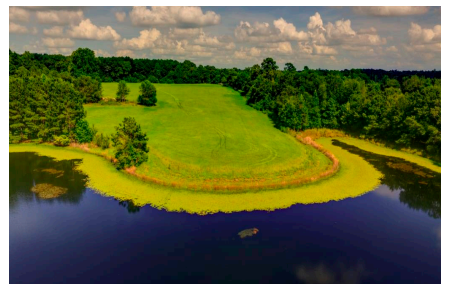
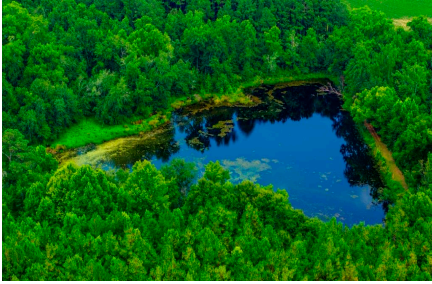
Westside Acres - Tract 2 is a rare opportunity to own 197± acres of breathtaking rural landscape in a highly sought after area in northern Bulloch County. This expansive property offers a blend of rolling pasture land, lush hardwoods, mature pine plantation, and two ponds, making it an ideal canvas for a variety of uses, from a serene private retreat to a productive agricultural enterprise. Located 9 miles from Statesboro and just 15 minutes from Metter.



Price: \$1,970,000
Property Type: Land
Status: Sold
Street/Address: Westside Rd.
City: Statesboro
State: Georgia
Zip code: 30458
County: bulloch
Acreage: 197
Per Acre Price: \$10,000.00
Phone Number: 912.764.LAND(5263)
Email: info@LandandRivers.com
Google Maps link: [View Larger Map](#)

Westside Acres - Tract 2

Published on Plantation Properties & Land Investments, LLC (<https://landandrivers.com>)



Westside Acres - Tract 2

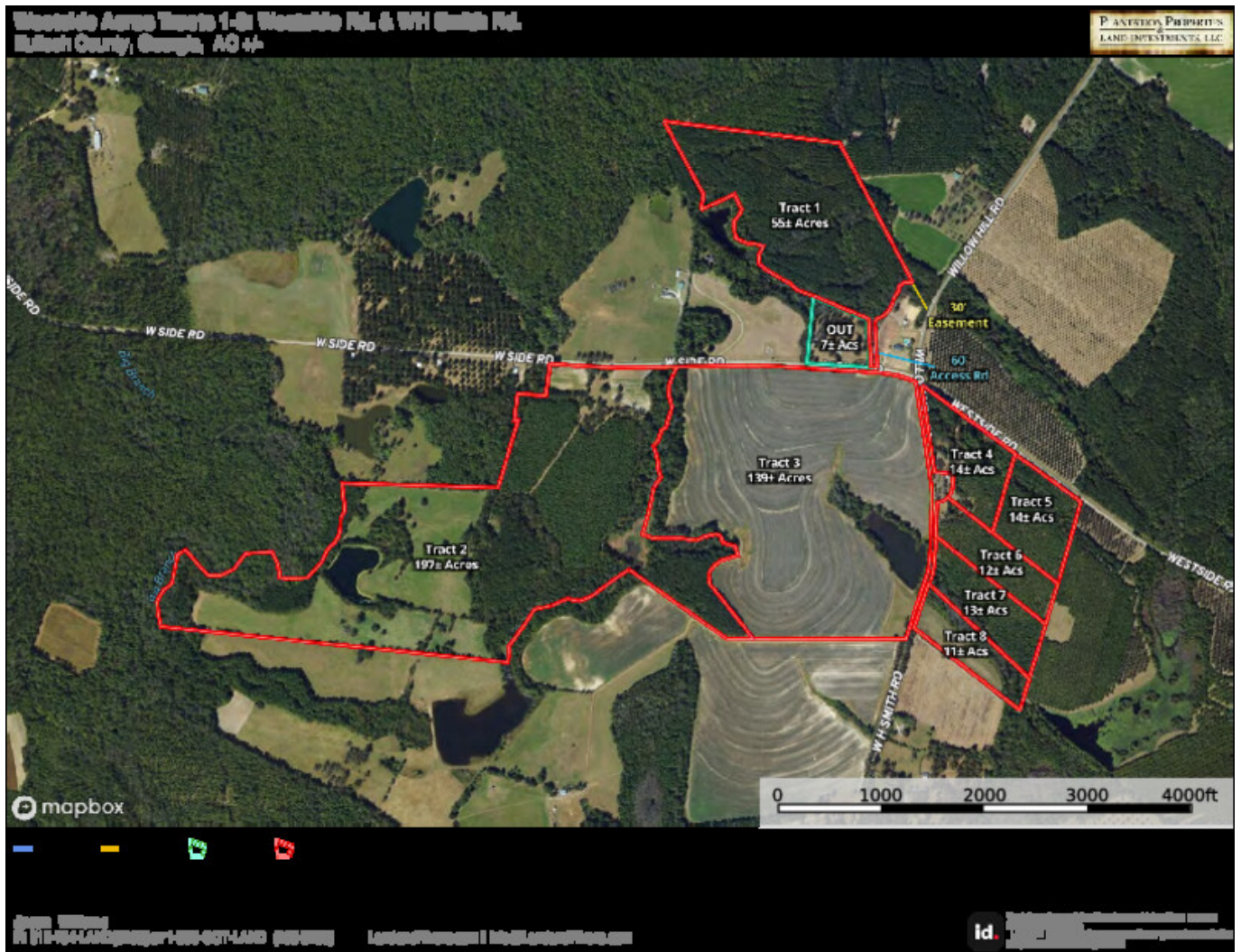
Published on Plantation Properties & Land Investments, LLC (<https://landandrivers.com>)



Aerial Map

Westside Acres - Tract 2

Published on Plantation Properties & Land Investments, LLC (<https://landanddrivers.com>)



Source URL: <https://landanddrivers.com/property/westside-acres-tract-2>