



Lanier Pond Farm

A RARE FIND! Beautiful farm with nice pond, irrigated cropland, pine plantation and more! Lanier Pond Farm is a lovely 90+/- acre tract featuring 30+/- acres of irrigated cropland. There are 2 electric pumping stations, a 3 tower pivot, a 1 tower pivot and an additional pad for pivot. Centrally placed within this parcel is a stunning 17 acre pond loaded with fish. To the east of the pond and cropland this tract 33+/- acres of merchantable pine wood. A perfect recreational tract with excellent habitat for the wildlife and plenty of food produced in the surrounding acres of cropland. Wonderful multi-use property! This tract would be a great investment opportunity of any buyer. Make this farm your new home site, weekend retreat or venture property. Enjoy farming, hunting, fishing, camping and more all on your own land. Call today for more details or to view this beautiful property



Price: \$269,100

Property Type: Land

Status: Sold

Street/Address: Canoochee Road

City: Metter

State: Georgia

Zip code: 30420

County: candler

Acreage: 90

Per Acre Price: \$2,990.00

Phone Number: 912.764.LAND(5263)

Email: jason@landandrivers.com

Google Maps link: [View Larger Map](#)

Lanier Pond Farm

Published on Plantation Properties & Land Investments, LLC (<https://landandrivers.com>)



Aerial Map

Lanier Pond Farm

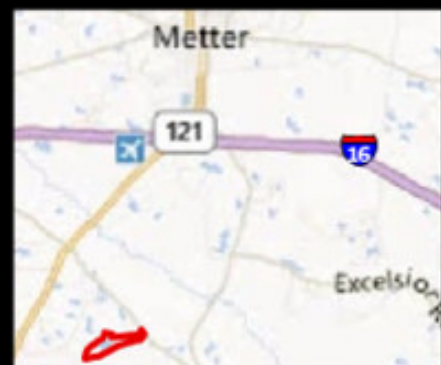
Published on Plantation Properties & Land Investments, LLC (<https://landanddrivers.com>)



PLANTATION PROPERTIES & LAND INVESTMENTS, LLC

1267 Merchants Way, Suite 101 - Suwanee, GA 30066
512.764.LAND (5263) | 770.672.6538

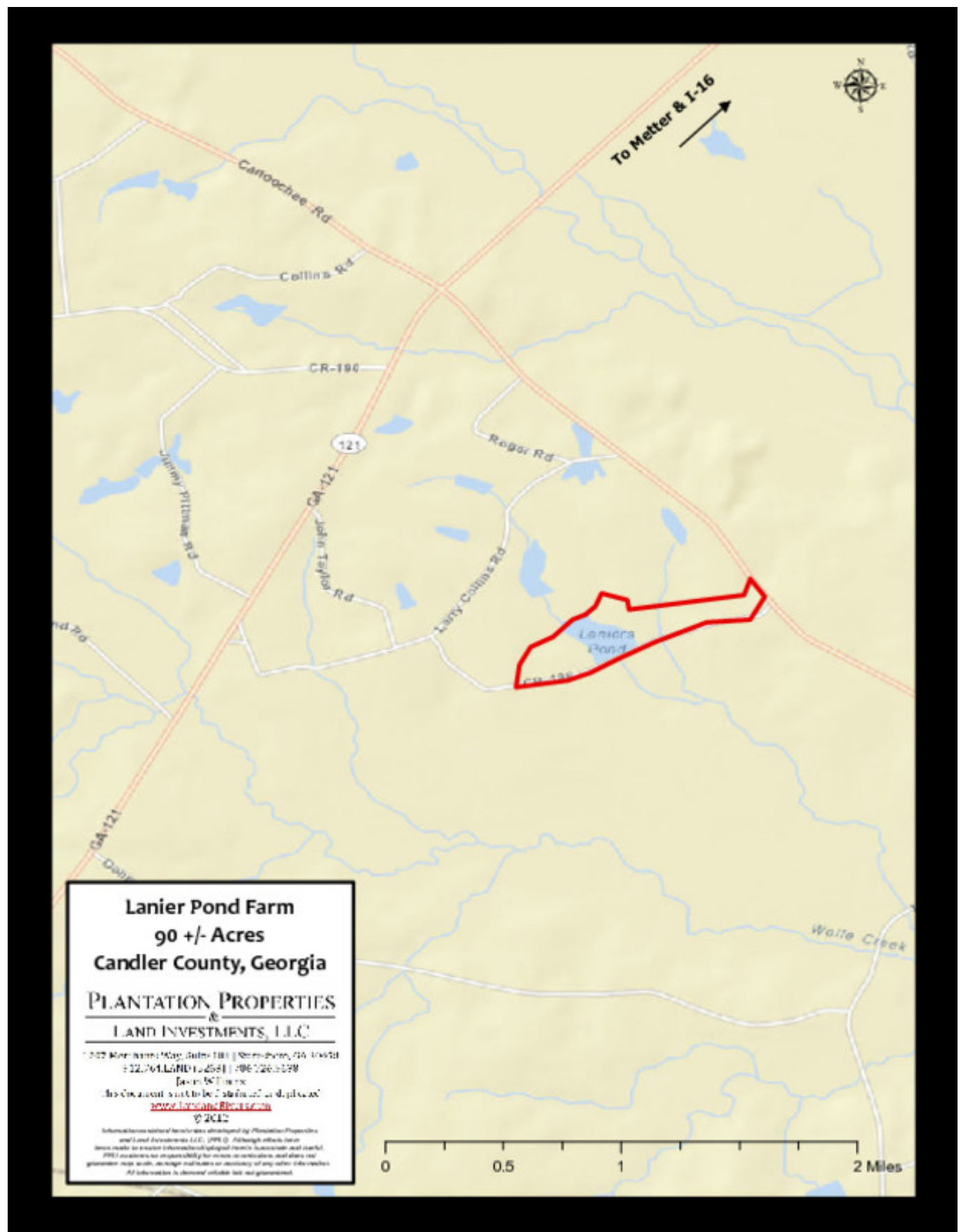
John Williams
This document is not to be distributed or posted
on www.landanddrivers.com
© 2012



Location Map

Lanier Pond Farm

Published on Plantation Properties & Land Investments, LLC (<https://landandrivers.com>)



Source URL: <https://landandrivers.com/property/lanier-pond-farm>