

## Mt. Olive Tract

Published on Plantation Properties & Land Investments, LLC (<https://landandrivers.com>)

---



## Mt. Olive Tract

This nice 40 acre tract of land is located about 3 miles south I-16 and about 5 miles south of Metter on Mt. Olive Rd. There is approximately 2,100 ft of road frontage with power along the highway. All of the property is wooded with a good stand of 20 year old pine plantation and some hardwood timber. Loaded with wildlife such as deer, turkey and more. A wonderful multi-use property! There are also several good home sites offering lots of privacy and only a short distance to I-16 for easy commuting. Whether you are looking for a good hunting tract, timber investment or a nice place to live, this property would be ideal for all.



**Price:** \$79,800

**Property Type:** Land

**Status:** Sold

**Street/Address:** Mt. Olive Road

**City:** Metter

**State:** Georgia

**Zip code:** 30420

**County:** candler

**Acreage:** 40

**Per Acre Price:** \$1,995.00

**Phone Number:** 912.764.LAND(5263)

**Email:** [jasonwilliams@landandrivers.com](mailto:jasonwilliams@landandrivers.com)

**Google Maps link:** [View Larger Map](#)



## Aerial Map



**PLANTATION PROPERTIES  
&  
LAND INVESTMENTS, LLC**

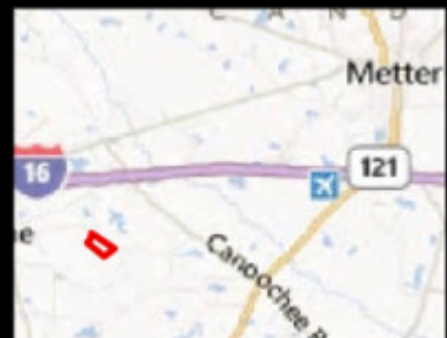
12072 Sandcastle Way, Suite 101, Suwanee, GA 30086  
770.764.LAND (5263) | 770.726.3630

Jason Williams

This document is not to be distributed or duplicated

[without landanddrivers.com](https://landanddrivers.com)

© 2022





## Topo Map



**PLANTATION PROPERTIES  
&  
LAND INVESTMENTS, LLC**

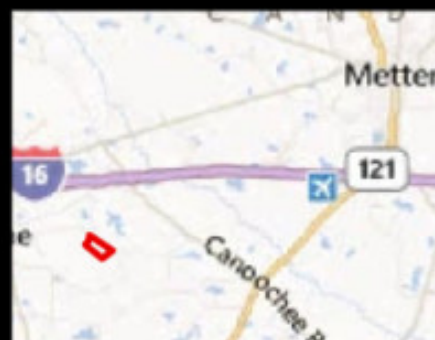
1207 Sandcastle Way, Suite 101, Suwanee, GA 30086  
770.764.LAND (5263) | 770.726.3630

Jason Williams

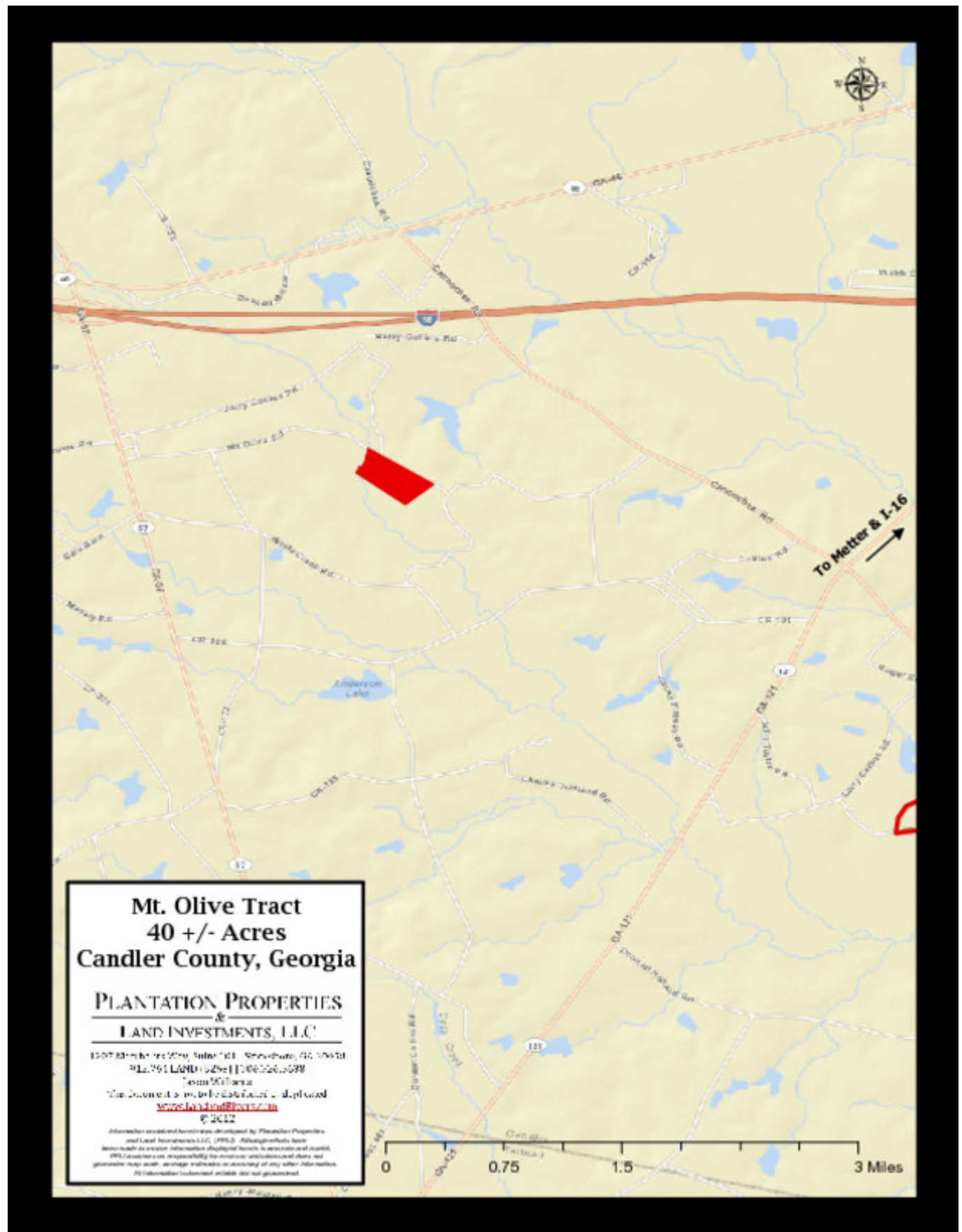
This document is not to be distributed or duplicated

[without prior written consent](https://landandrivers.com)

© 2022



## Location Map



## Flyer

# 40 acres in Candler County

Plantation Properties & Land Investments | 912-764-LAND | [jasonwilliams@landandrivers.com](mailto:jasonwilliams@landandrivers.com)



### Property Address

Mt Olive Road  
Metter, Georgia 30439

### Property Highlights

- Price: \$79,800.00
- Acres: 40.00
- County: Candler
- State: Georgia
- Closest City: Metter
- Property Type: Acreage

### Property Description

This nice 40 acre tract of land is located about 3 miles south I-16 and about 5 miles south of Metter on Mt. Olive Rd. There is approximately 2,100 ft of road frontage with power along the highway. All of the property is wooded with a good stand of pine plantation and some hardwood timber. Loaded with wildlife such as deer, turkey and more. A wonderful multi-use property! There are also several good home sites offering lots of privacy and only a short distance to I-16 for easy commuting. Whether you are looking for a good hunting tract, timber investment or a nice place to live, this property would be ideal for all.

### Driving Directions

located about 3 miles south I-16 and about 5 miles south of Metter on Mt. Olive Rd. call for maps and directions.

PLANTATION PROPERTIES  
&  
LAND INVESTMENTS, LLC

Jason Williams  
[jasonwilliams@landandrivers.com](mailto:jasonwilliams@landandrivers.com)  
912-764-LAND  
1207 Merchants Way  
Suite 101  
Statesboro, GA 30458  
[www.LandandRivers.com](http://www.LandandRivers.com)

More details at [landsofgeorgia.com/listing/1440905](https://landsofgeorgia.com/listing/1440905)