



## Timber Creek

Beautiful Bulloch County Farm 210+/- acres located just north of Statesboro off HWY 25 on Akins Pond Road. Property features a beautiful home with open floor plan. A one bedroom, two bath, with huge covered porch, deck and lots of extras. A large insulated shop, 2 ponds, open and wooded timberland, a creek and much more! This tract is a prime hunting, recreational and timber investment property, and has been well managed. Conveniently located in Statesboro, GA. Only minutes to Georgia Southern University and East Georgia Medical Center. The property consists mostly of natural hardwoods and some pine plantation. The southern boundary of the property is the run of Mill Creek making it perfect for fishing, camping or trails... a true safe haven for wildlife such as deer, duck, turkeys and more! A MUST SEE!!!! Call today to setup a showing (912) 764.LAND(5263)

### Features:

Home

Shop

2 Ponds

Wooded Land

Creek



**Price:** \$685,000

**Property Type:** Land

**Status:** Sold

**Street/Address:** 1700 Akins Pond Road

**City:**

**State:** Georgia

**Zip code:** 30458



# Timber Creek

Published on Plantation Properties & Land Investments, LLC (<https://landandrivers.com>)

---

**County:** bulloch

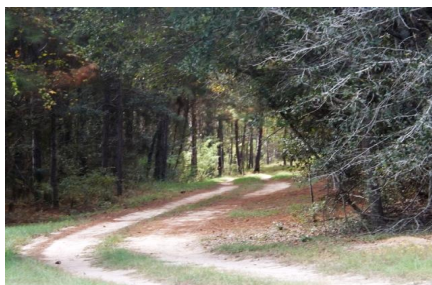
**Acreage:** 211

**Per Acre Price:** \$0.00

**Phone Number:**

**Email:**

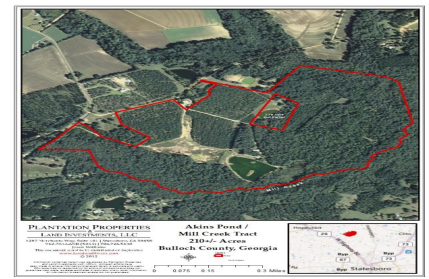
**Google Maps link:** [View Larger Map](#)





# Timber Creek

Published on Plantation Properties & Land Investments, LLC (<https://landandrivers.com>)



Source URL: <https://landandrivers.com/property/timber-creek>