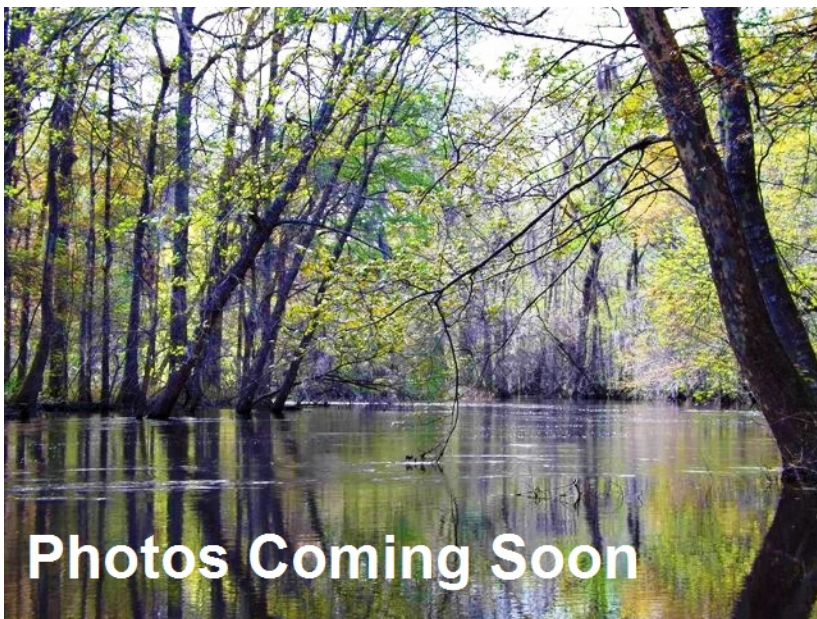




Smith Healy Farm Banks Dairy Road Tract

Pictures coming soon! Beautiful Bulloch County Farm! Nice 110 +/- acre tract in Statesboro, GA with a 7.5 acre pond. Perfect hunting/recreational tract or beautiful wooded home site. This farm is truly one of a kind with its gentle roll of wooded land and all situated only minutes from town. Located in the very desirable area of Westside Statesboro off Banks Dairy Road. More land available Several tracts feature gorgeous pecan orchards or pasture land and would make for a stunning place to build that dream home you always wanted. Make this farm your new home site, family retreat, or investment property. A MUST SEE!!! Call today for more detail or to see this farm
912.764.5263(LAND)



Price: \$550,000

Property Type: Land

Status: Sold

Street/Address: Banks Dairy Road

City:

State: Georgia

Zip code: 30458

County: bulloch

Acreage: 110

Per Acre Price: \$0.00

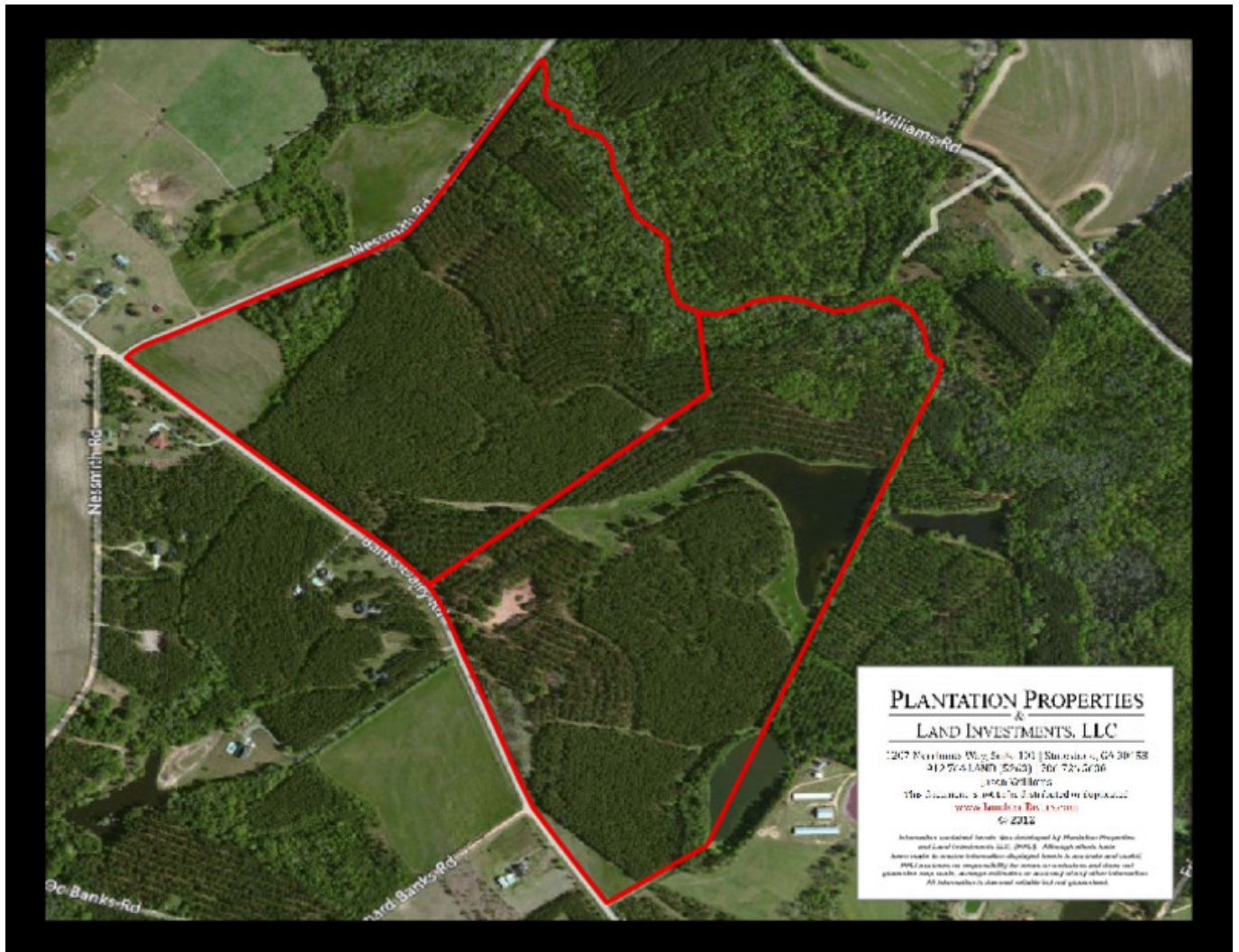
Phone Number: 912-764-LAND(5263)

Email: info@landandrivers.com

Google Maps link: [View Larger Map](#)

Smith Healy Farm Banks Dairy Road Tract

Published on Plantation Properties & Land Investments, LLC (<https://landanddrivers.com>)



Source URL: <https://landanddrivers.com/property/smith-healy-farm-banks-dairy-road-tract>