

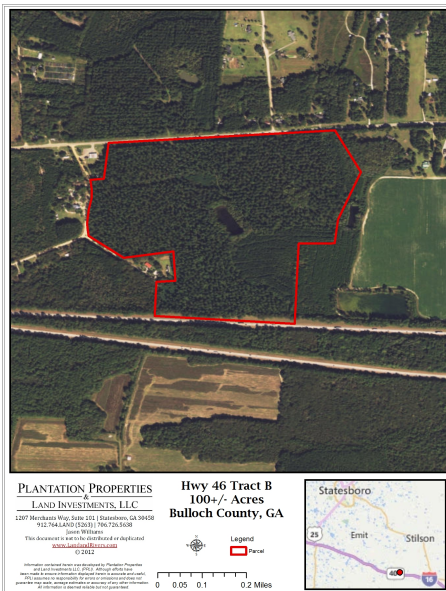
Hwy 46- 100+/-acs

Published on Plantation Properties & Land Investments, LLC (<https://landanddrivers.com>)



Hwy 46- 100+/-acs

100+/-acs in Bulloch County! This property features a POND with mostly wooded pine land and some natural hardwood. Located in the Brooklet School district, perfect tract for a home in the country or investment opportunity. Conveniently located only about 25-30 min from Savannah. Just off I-16 with road frontage on Hwy 46, Lanier Rd and along I-16. This place is loaded with deer signs and would make an excellent hunting tract, homesite, weekend retreat or venture property. Seller may divide. A MUST SEE!!! Call Jason Today! 912.764.LAND(5263)



Price: \$345,000

Property Type: Land

Status: Sold

Street/Address: HWY 46 & Lanier Road & I-16

City:

State: Georgia

Zip code: 30458

County: bulloch

Acreage: 100

Per Acre Price: \$3,450.00

Phone Number: 912-764-LAND(5263)

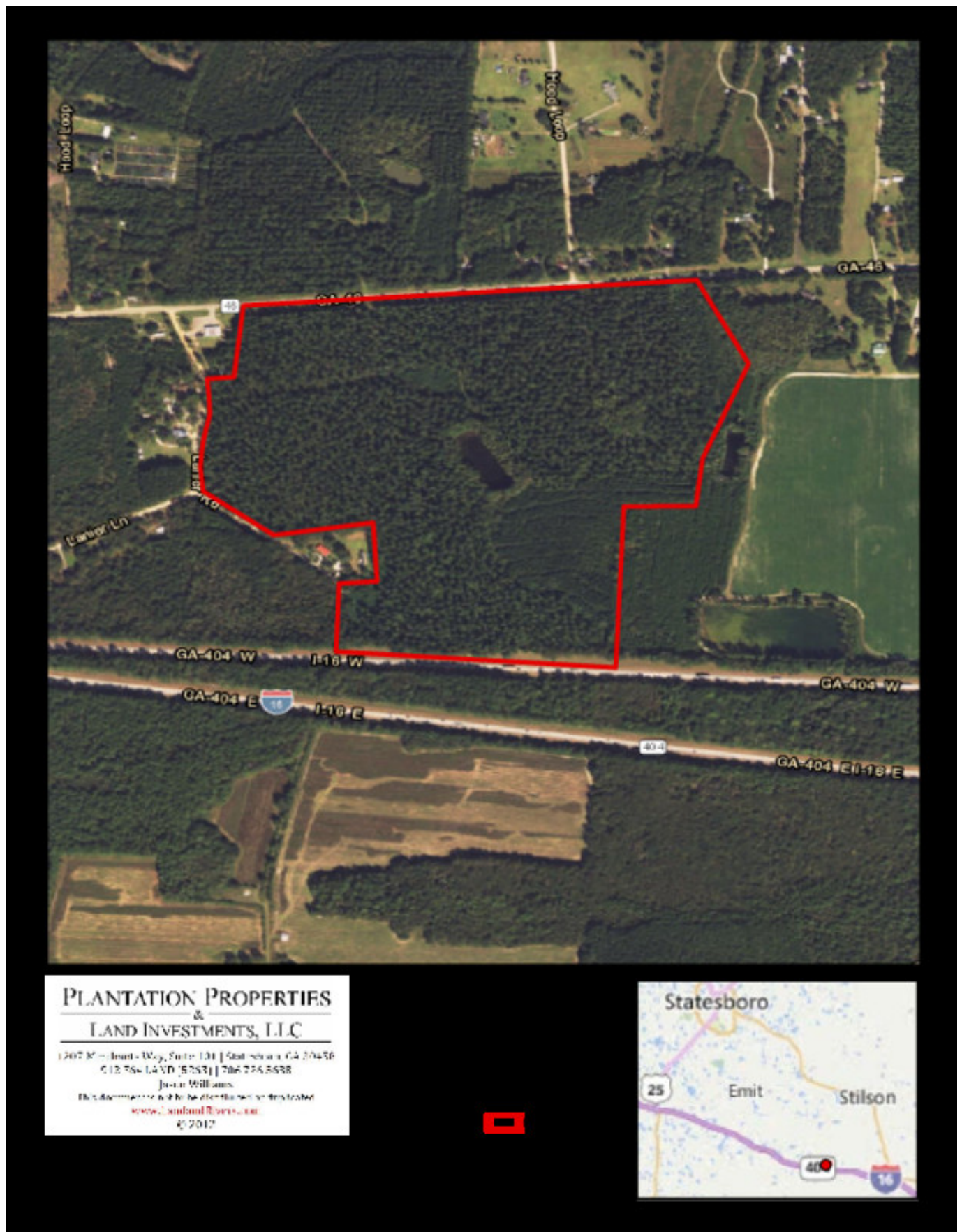
Email: info@landanddrivers.com

Google Maps link: [View Larger Map](#)

Aerial Map 100 acres

Hwy 46- 100+/-acs

Published on Plantation Properties & Land Investments, LLC (<https://landanddrivers.com>)



Source URL: <https://landanddrivers.com/property/hwy-46-100-acs>