



Brooklet Hideaway

Just Reduced! This 90+/- acres of land is located in the Brooklet school district on Akins Circle Ext. All of the property is wooded with a nice stand of planted pines and some natural hardwood throughout. There is easy access throughout the property and offers excellent potential for timber investments or a great place to build your home. This is a great opportunity for a buyer looking for recreation, hunting or a home site and wanting a return on their investment. Property is located near Interstate 16 just southwest of Statesboro, GA and only 40 miles from Savannah, 27 miles from Pooler and 15 miles to Statesboro. Call Jason today to view this tract. 912.764.LAND(5263)



Price: \$265,500

Property Type: Land

Status: Sold

Street/Address: Akins Circle Ext.

City: Brooklet

State: Georgia

Zip code: 30415

County: bulloch

Acreage: 90

Per Acre Price: \$2,950.00

Phone Number: 912-764-LAND(5263)

Email: info@landanddrivers.com

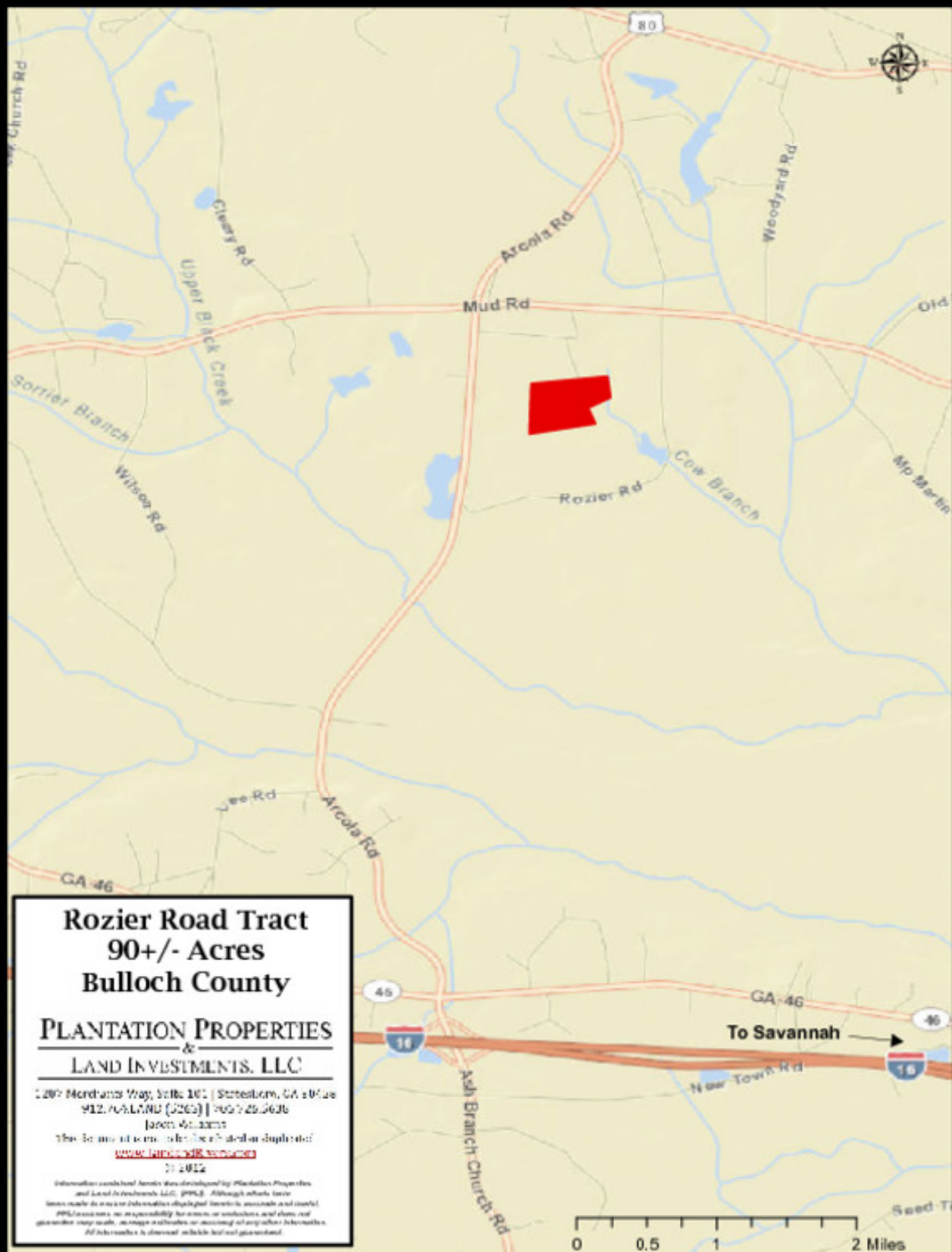
Google Maps link: [View Larger Map](#)

Brooklet Hideaway

Published on Plantation Properties & Land Investments, LLC (<https://landandrivers.com>)



Location Map



Published on Plantation Properties & Land Investments, LLC (<https://landanddrivers.com>)

90+/- Akins Circle Ext, Brooklet Hideaway
Bulloch County, Georgia, 90.45 AC +/-

PASTORAL PROPERTIES
LAND ESTIMATES LLC

90.45 +/- ACRES

0 500 1000 1500 2000ft

Map data ©2018 Google Imagery ©2018 DigitalGlobe, GeoEye, IGN, Aerogrid, AeroGRID, IGN, SDA, CNES-Airbus DS, USDA, CNES

Google

Boundary

Jason Williams
P: 912-764-5263 or 1-833-GOT-LAND (468-5263)
info@landandrivers.com | LandandRivers.com

The information contained herein was obtained from sources deemed to be reliable. MapRight does not make any warranty or guarantee as to the completeness or accuracy thereof.

Page 4 of 4