



Painters Pond

Painters Pond

Painters Pond is a beautiful 56± acre farm featuring a pond, open and wooded land, fruit trees, grapevines and a charming 3 bedroom, 2 bath newly remodeled home. Located between Sylvania and Newington off HWY 24 on Painters Road. This property has so much to offer with irrigated fruit trees, delicious muscadine grape vines, irrigated sawtooth oaks and much more. A turnkey mini farm with all the farm equipment needed to maintain and improve the property included! This tract would be a great investment opportunity of any buyer. Make this farm your new home site, weekend retreat or venture property. Enjoy farming, hunting, fishing, camping and more all on your own land. Call today for more details or to view this farm today 912.764.LAND(5263)

Home Features:

- 3 bedrooms 2 baths
- Washer/Dryer
- Sun Porch
- New Appliances
- Remodeled Kitchen
- Solid Surface Countertops

Equipment Included

- John Deere 1120 Tractor
- Bottom Plow
- Bush Hog Mower
- Harrow
- Drag
- Seeder
- Sprayer
- Chisel Plows

Painters Pond

Published on Plantation Properties & Land Investments, LLC (<https://landandrivers.com>)



Price: \$258,000

Property Type: Land

Status: Sold

Street/Address: 531 Painters Road

City: Sylvania

State: Georgia

Zip code: 30467

County: screven

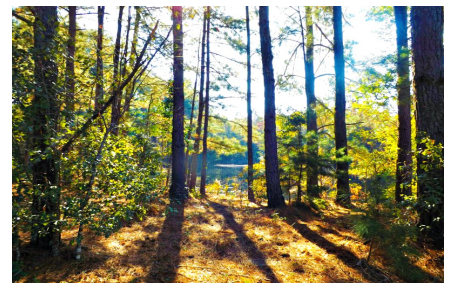
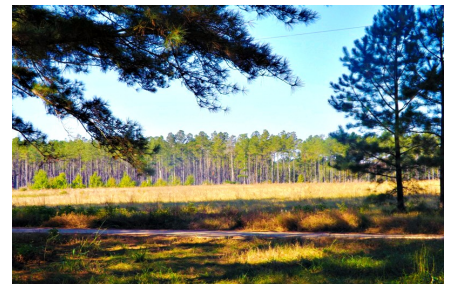
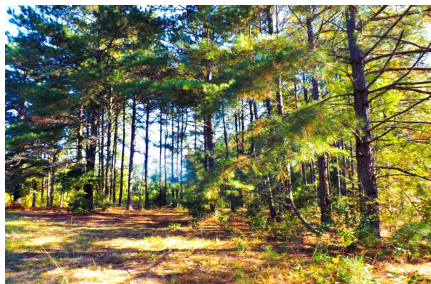
Acreage: 56

Per Acre Price: \$0.00

Phone Number: 912.764.LAND(5263)

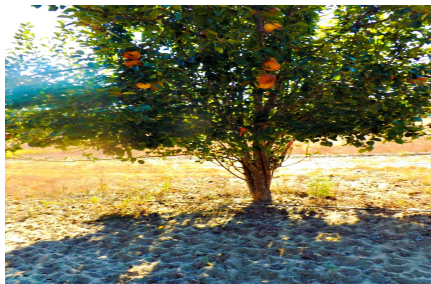
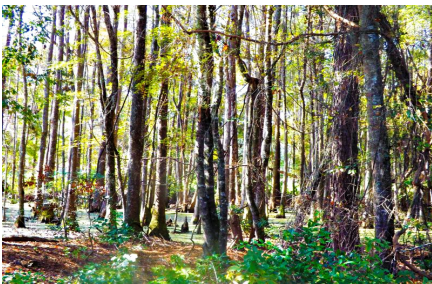
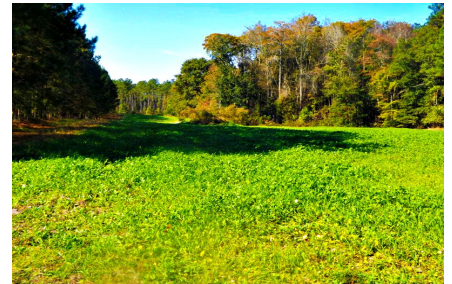
Email: jasonwilliams@landandrivers.com

Google Maps link: [View Larger Map](#)



Painters Pond

Published on Plantation Properties & Land Investments, LLC (<https://landandrivers.com>)



Painters Pond

Published on Plantation Properties & Land Investments, LLC (<https://landanddrivers.com>)

Aerial



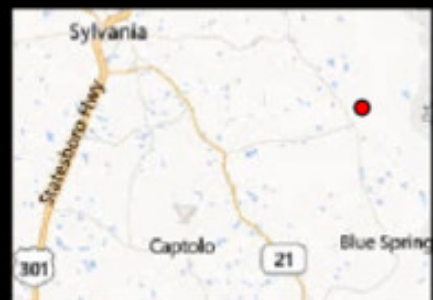
PLANTATION PROPERTIES & LAND INVESTMENTS, LLC

12077 Westlawn Way, Suite 101 | Statesboro, GA 30460
912.764.2660 | 766.726.5000

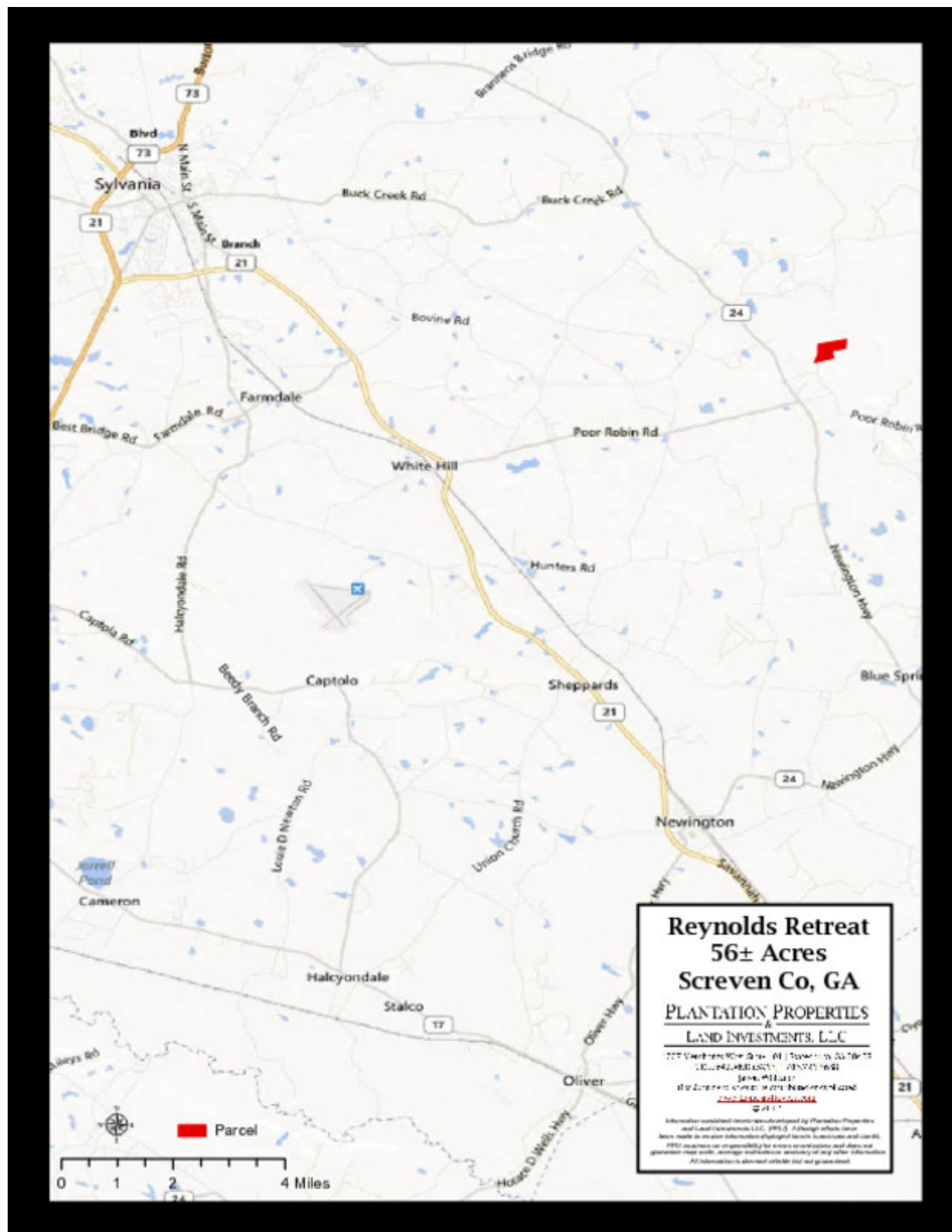
Jason Williams
This document is not to be distributed or duplicated.

www.LandandDrivers.com

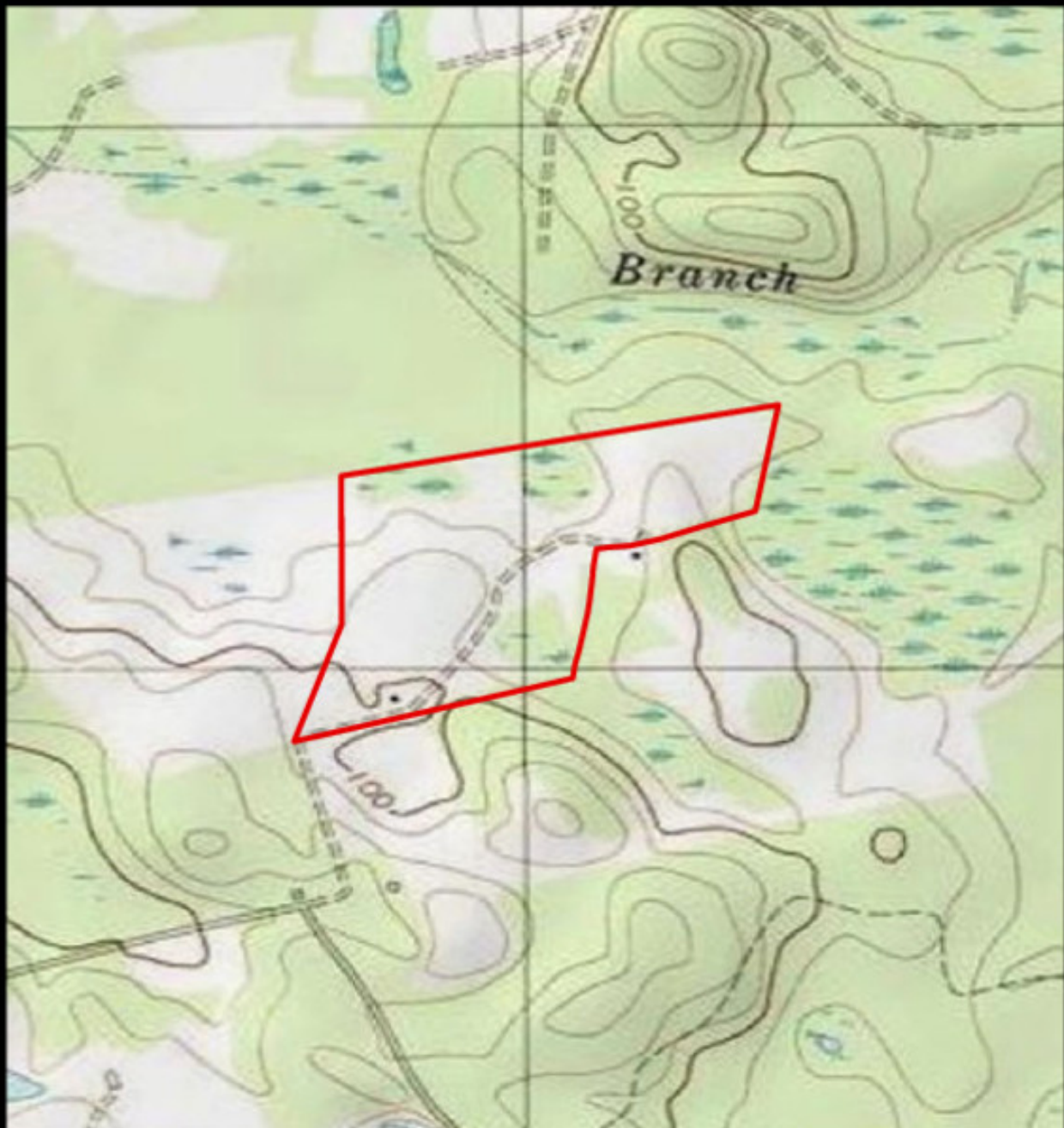
03/2012



Location



Topo Map



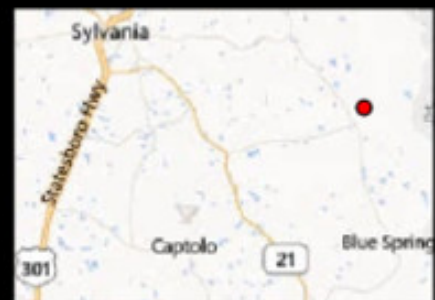
**PLANTATION PROPERTIES
&
LAND INVESTMENTS, LLC**

12077 Westlawn Way, Suite 101 | Statesboro, GA 30460
912.764.2660 (2025) | 766.726.5000

Jason Williams
This document is not to be distributed or duplicated.

www.LandandDrivers.com

03/2012



Painters Pond

Published on Plantation Properties & Land Investments, LLC (<https://landandrivers.com>)

Source URL: <https://landandrivers.com/property/painters-pond>